

Historic Preservation Commission Meeting November 7, 2011



- Good Afternoon!
Please sign in at the door
- If you wish to speak on an issue or have your opinion noted by the commission, please fill out a form at the door and hand it to us



— *M*ILWAUKEE —

**HISTORIC
PRESERVATION
COMMISSION**

LIVING WITH HISTORY

1339 E. Knapp St.

Addition

**First Ward Triangle
Historic District**



Bloodgood House







Looking southeast



3-story tower
incorporated
into new
addition

Remove frame
addition



NEW ACCESSIBLE CONCRETE WALK

4' HIGH WITH DECORATIVE METAL GATE

EXISTING ENTRANCE TO MAIN LEVEL

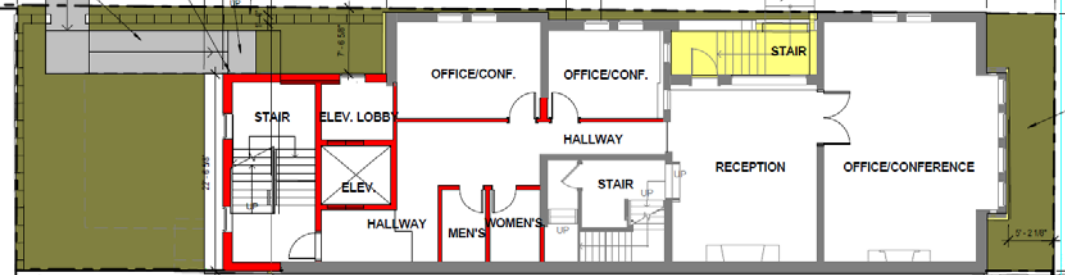
LOADING ZONE

EXISTING WOOD FENCE AND BRICK PIERS



EXISTING METAL FENCE

EXISTING HAWLEY HOUSE AND LION HOUSE PARKING LOT



HAWLEY HOUSE

LION HOUSE





Glazed curtain wall
at addition of accessible entry

Restored brick retaining wall

Proposed west elevation

Spires, crockets, ridge caps and piers restored to historic condition. Typical

New clay tile roof. New gutters and downspouts.

New relocated dormer to match existing.

Hawley House, beyond

New decorative terra cotta elements. New decorative window. All brick veneer to match historic fabric.

New porch at accessible entry for new stair and elevator

Restored brick retaining wall with decorative iron gate.

42' 8"

Wood framed replacement windows with muntins to match historic profiles. Insulated glass. Typical

Restored window to correspond to historic

Restored windows, glazing, framing and stone masonry

Wood framed replacement windows to match historic profiles. Insulated glass. Typical

Glazed curtain wall transition between existing facade and renovated addition

New stone masonry, to match existing

