

MILWAUKEE  
HISTORIC  
PRESERVATION  
COMMISSION

LIVING WITH HISTORY

## Certificate of Appropriateness

Milwaukee Historic Preservation Commission/200 E. Wells Street/Milwaukee, WI 53202/phone 414-286-5712/fax 414-286-3004

**Property**

1879 N. CAMBRIDGE AV. An individually designated Historic Property

**Description of work**

Install a Solar PV electrical system on the roof. Each solar panel measures approximately 40" x 78" - the overall array will be approximately 217 square feet. The panels will be mounted flush to the south-facing pitched roof. The panels will be approximately 4 to 5 inches off the existing roof shingles. Installation of the panels will start as far west (backyard - away from street) as possible and work towards the east. The panels will have a silver aluminum frame with a black face.

**Date issued**

9/17/2015

PTS ID 105780 COA

In accordance with the provisions of Section 320-21 (11) and (12) of the Milwaukee Code of Ordinances, the Milwaukee Historic Preservation Commission has issued a certificate of appropriateness for the work listed above. The work was found to be consistent with preservation guidelines. The following conditions apply to this certificate of appropriateness:

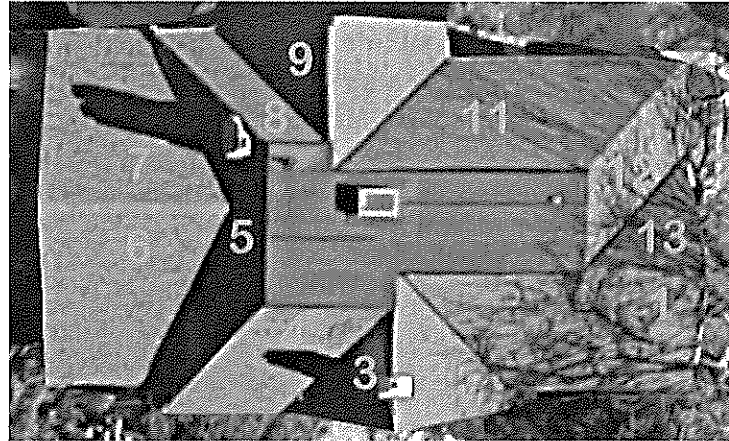
Panels will be located on roof surfaces 4 and 6. If additional roof area is needed for panel installation, contact Historic Preservation staff.

All work must be done in a craftsman-like manner, and must be completed within one year of the date this certificate was issued. Staff must approve any changes or additions to this certificate before work begins. Work that is not completed in accordance with this certificate may be subject to correction orders or citations. If you require technical assistance, please contact Dean Doerrfeld of the Historic Preservation staff as follows: Phone: (414) 286-5712 E-mail: [Dean.Doerrfeld@milwaukee.gov](mailto:Dean.Doerrfeld@milwaukee.gov).

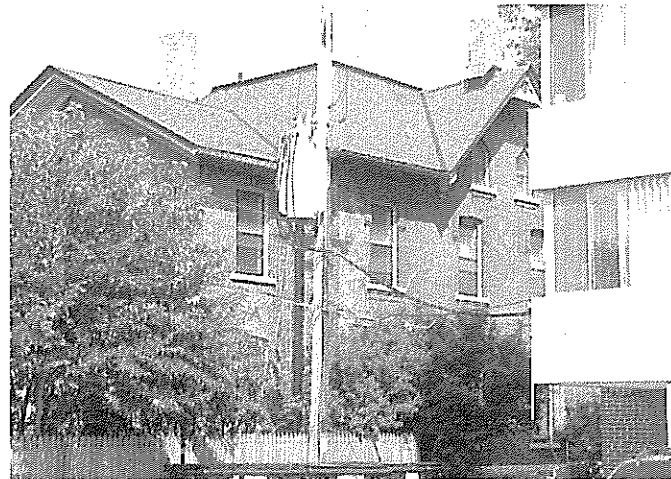
If permits are required, you are responsible for obtaining them from the Milwaukee Development Center. If you have questions about permit requirements, please consult the Development Center's web site, [www.milwaukee.gov/build](http://www.milwaukee.gov/build), or call (414) 286-8210.

City of Milwaukee Historic Preservation Staff

Copies to: Development Center, Ald. Nik Kovac, Contractor , Inspector Jason Golec (286-2553)



An aerial view of 1879 N. Cambridge, key to numbered roof faces



Rear view from the southwest showing faces 3, 4, 5, and 6