

# Certificate of Appropriateness

Milwaukee Historic Preservation Commission/200 E. Wells Street/Milwaukee, WI 53202/phone 414-286-5712/fax 414-286-3004

**MILWAUKEE  
HISTORIC  
PRESERVATION  
COMMISSION**

LIVING WITH HISTORY

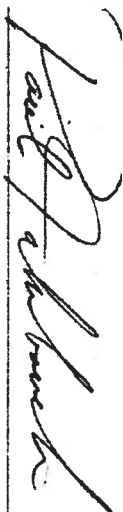
**Property** 3002 W. STATE ST. Concordia Historic District  
**Description of work** Restore windows on third floor in front gable. Install new all-wood windows on the third floor in the side and rear gables (four windows total).  
**Date issued** 9/19/2014 PTS ID 97785 COA, Windows

In accordance with the provisions of Section 320-21 (11) and (12) of the Milwaukee Code of Ordinances, the Milwaukee Historic Preservation Commission has issued a certificate of appropriateness for the work listed above. The work was found to be consistent with preservation guidelines. The following conditions apply to this certificate of appropriateness:

All work will be done according to the illustrations and specifications contained throughout this COA. The new wood windows (a total of four) must match exactly the sizes of the original glass and the original design. Windows must be all wood on the exterior. No vinyl, vinyl-clad, aluminum, aluminum-clad, steel or fiberglass windows are permitted. No removal nunnins are permitted. Windows must be painted on the exterior upon completion of installation. Front gable windows on the third floor will be restored. The use of wood epoxies intended for such restoration is a necessity. Epoxies must be applied to perfectly dry wood in order to be effective. Restored windows will be painted upon completion.

All work must be done in a crafts worker-like manner, and must be completed within one year of the date this certificate was issued. Staff must approve any changes or additions to this certificate before work begins. Work that is not completed in accordance with this certificate may be subject to correction orders or citations. If you require technical assistance, please contact Paul Jakubovich of the Historic Preservation staff as follows: Phone: (414) 286-5712 Fax: (414) 286-3004 E-mail: [pjakub@milwaukee.gov](mailto:pjakub@milwaukee.gov).

If permits are required, you are responsible for obtaining them from the Milwaukee Development Center. If you have questions about permit requirements, please consult the Development Center's web site, [www.milwaukee.gov/build](http://www.milwaukee.gov/build), or call (414) 286-8210.

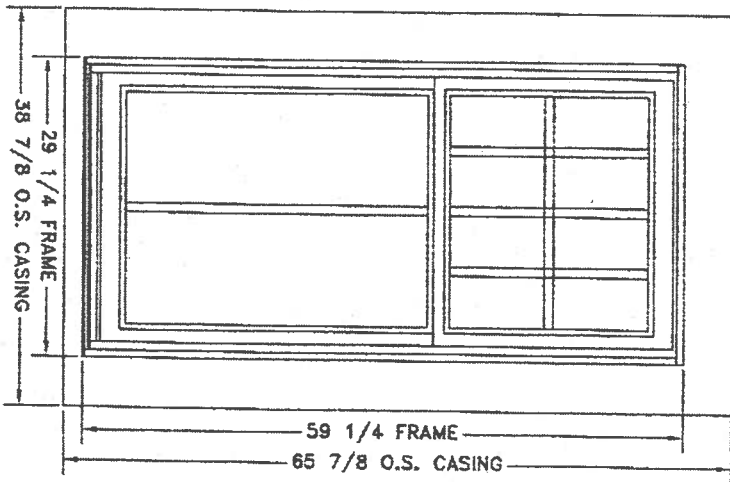
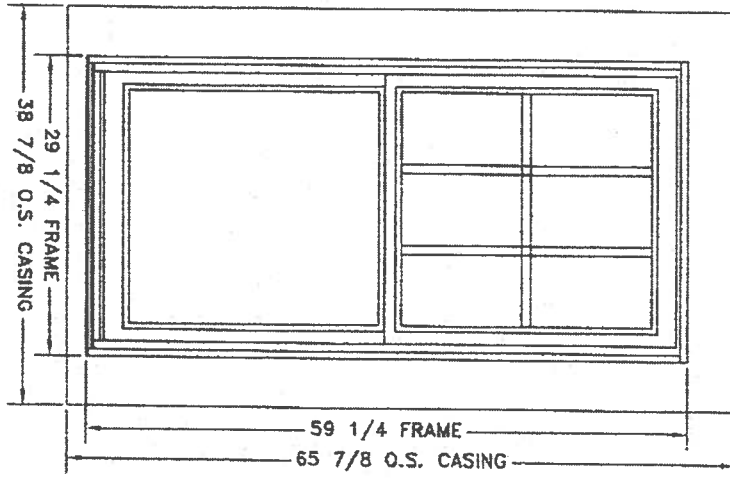


Paul Jakubovich  
City of Milwaukee Historic Preservation

Copies to: Development Center, Ald. Robert Bauman, Contractor Stephen Servais, Inspector Adam Roder (286-2538), Inspector Heidi Weed

New all wood windows for the third floor gables on the sides and rear of 3002 W. State Street. Sill will be 2 inches thick to match the historic sills on the building.

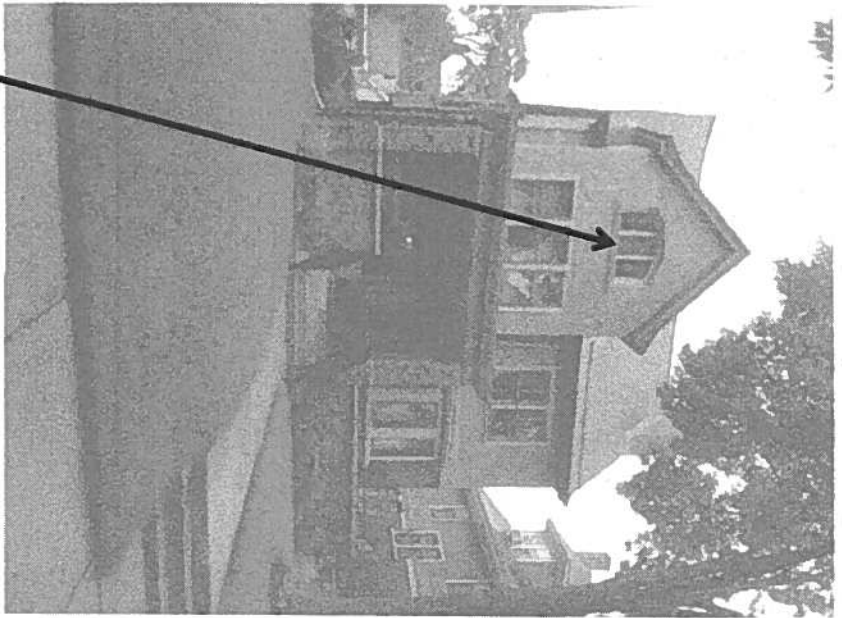
**SIGN OFF REQUIRED**  
X \_\_\_\_\_



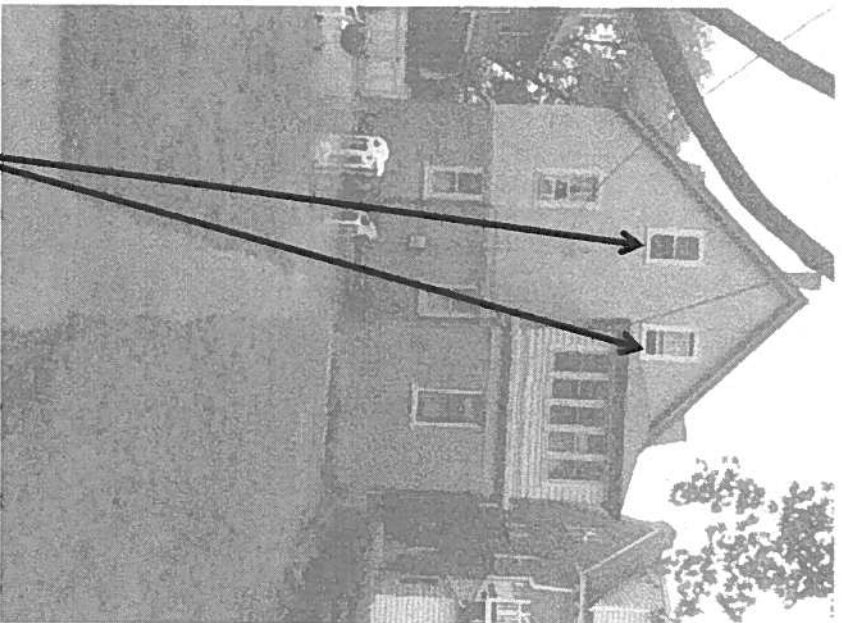
**SPECS:**  
 SITELINE EX WOOD DOUBLE HUNG  
 SITELINE EX WOOD DOUBLE HUNG - COTTAGE STYLE  
 7/8" SDL  
 6 1/2" FLAT CASING W/ 2" SILL NOSING

<b>JELD-WEN</b> WINDOWS & DOORS		DATE:	REVISION:	DWG:
PREMIUM CATALOG-HAWKINS				
ORDER NAME:	BLIFFERT LUMBER			
DRAWING NO.:	BRE14513	DATE:	8/28/14	
DRAWN FOR:	TOM M	SCALE:	3/4" = 1'	

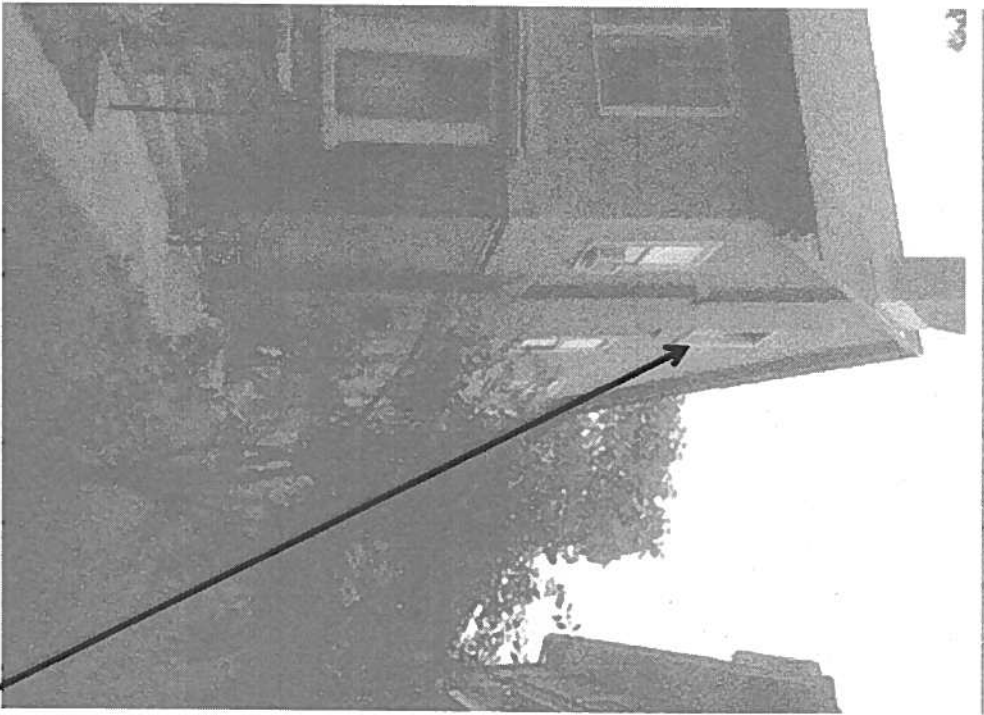
DRAWINGS AND ILLUSTRATIONS ARE PROVIDED FOR REFERENCE ONLY. PRODUCT IS UNWARRANTED AS SPECIFIED BY THE CUSTOMER PURCHASER THEREOF. APPROVED AND AUTHORIZED FOR USE BY THE MANUFACTURER. ALL DIMENSIONS ARE TO FACE UNLESS OTHERWISE SPECIFIED. THE MANUFACTURER SHALL BE RESPONSIBLE FOR THE PROPER ORDER. IT IS THE PURCHASER'S RESPONSIBILITY TO VERIFY THAT ALL DIMENSIONS ARE CORRECT.



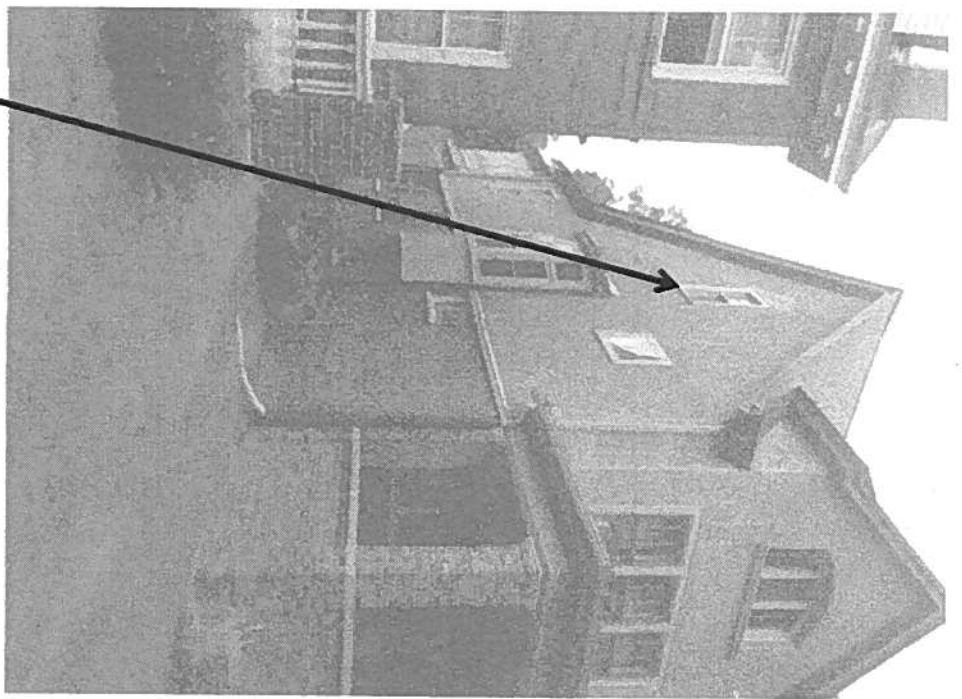
Restore third floor front gable windows using structural wood epoxies (auto body filler must NOT be used). Windows must be painted upon completion



Rear windows in gable will be replaced with new, matching, all-wood windows. See attached shop drawings. New glass sizes must match the originals and the designs of the new window must match the originals.



Install new all wood, matching window in gable on third floor of east elevation



Install new matching, all wood window in gable on third floor, West elevation