

**Table 321.25-G BRACING METHODS**

Material	Minimum Member Thickness or Size	Maximum Spacing	Minimum Vertical Panel Width or Spacing	Connection Criteria	
				Minimum Fasteners	Minimum Spacing
<b>Intersecting Bracing Methods</b>					
LSP Lath-bracing	1/4" wood lath (or approved metal lath installed per manufacturer instructions)	10"	45° angle and maximum 18" x-cord spacing	3-6d common nails on 1-6d nails on 2-1/2" x 1-1/2" x 0.117" diameter	Per stud and top and bottom plates
DWB Diagonal wood bracing	1 1/2" x 1 1/2" wood bracing for maximum 24" x-cord spacing	10"	45°	2-6d hex nails @ 24" x-cord x 0.117" diameter on 2-1/2" x 1-1/2" x 0.117" diameter	Per stud and top and bottom plates
WSP Wood structural panel	3/8" for maximum 48" x-cord spacing 3/8" for maximum 24" x-cord spacing	10"	45°	All common nails @ 6d hex nails @ 24" x-cord x 0.117" diameter, @ 7" edges, 6" end toe-nails	6" edges, 12" end toe-nails
SFB Structural fiber board sheathing	1/2" for maximum 48" x-cord spacing	10"	45°	1-1/2" long 4-0d x 2-1/2" diameter nails @ 24" x-cord, 10-gauge nails, 1-1/2" long	7" edges, 6" end toe-nails
CR Closed bead insulation on both sides of wall	1/2" for maximum 24" x-cord spacing	10"	90°	5d common nails, or #6 screws	7" edges, 7" field (including top and bottom plates)
CS-WSP Continuous sheathing WSP	3/8" for maximum 48" x-cord spacing 3/8" for maximum 24" x-cord spacing	12"	Refer to Table 321.25-H	Same as WSP	Same as WSP
CS-SFB Continuous sheathing SFB	1/2" for maximum 48" x-cord spacing	12"	Refer to Table 321.25-H	Same as SFB	Same as SFB

**CHOSEN WALL BRACING METHOD**

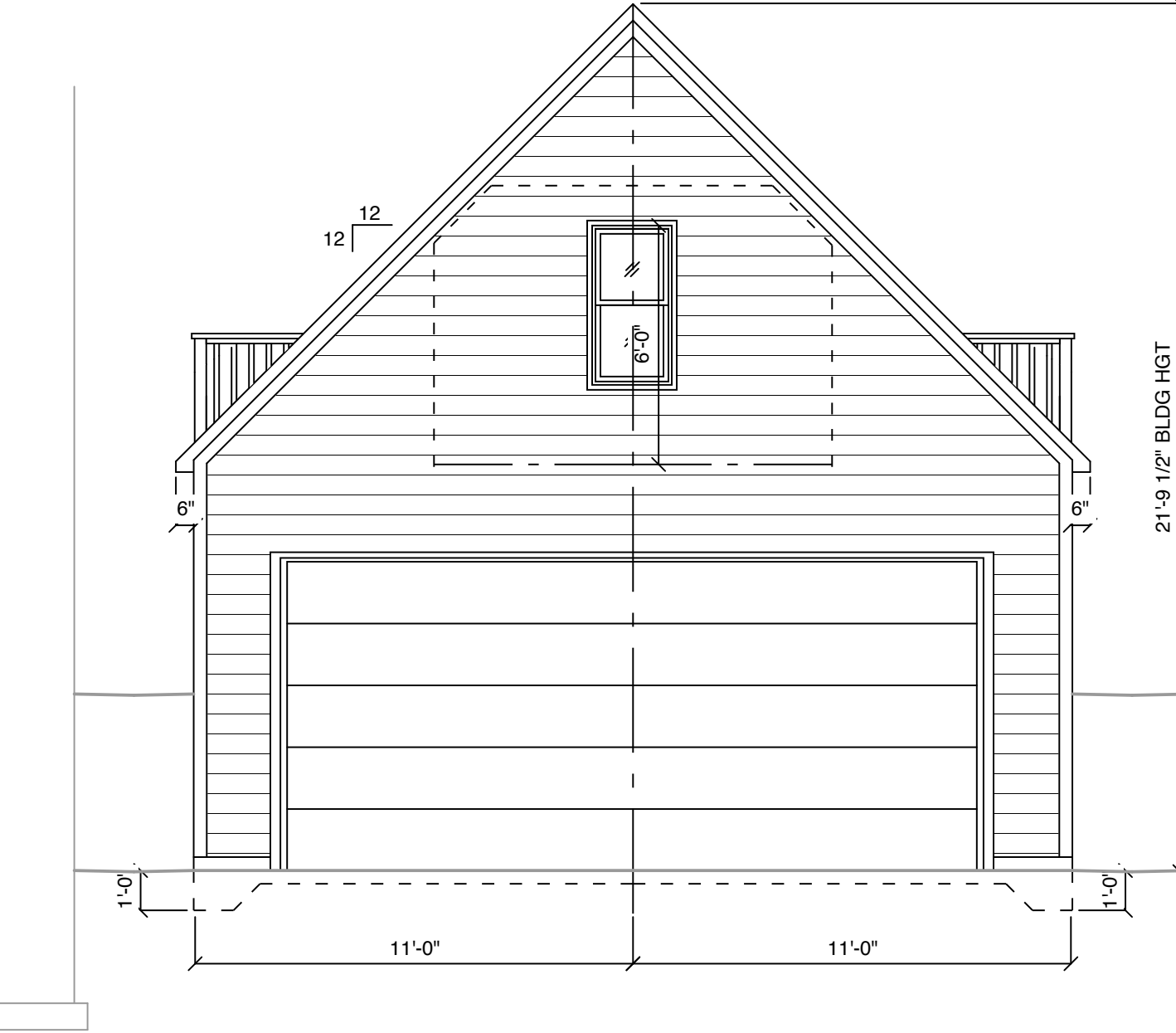
**Method PF - PORTAL FRAME BRACE CONSTRUCTION**

EXTENT OF BRACE WITH DOUBLE PORTAL FRAME (TWO BRACE WALL PANELS)  
EXTENT OF BRACE WITH SINGLE PORTAL FRAME (ONE BRACE WALL PANEL)  
FOR BRACE OF DOUBLE PORTAL FRAME

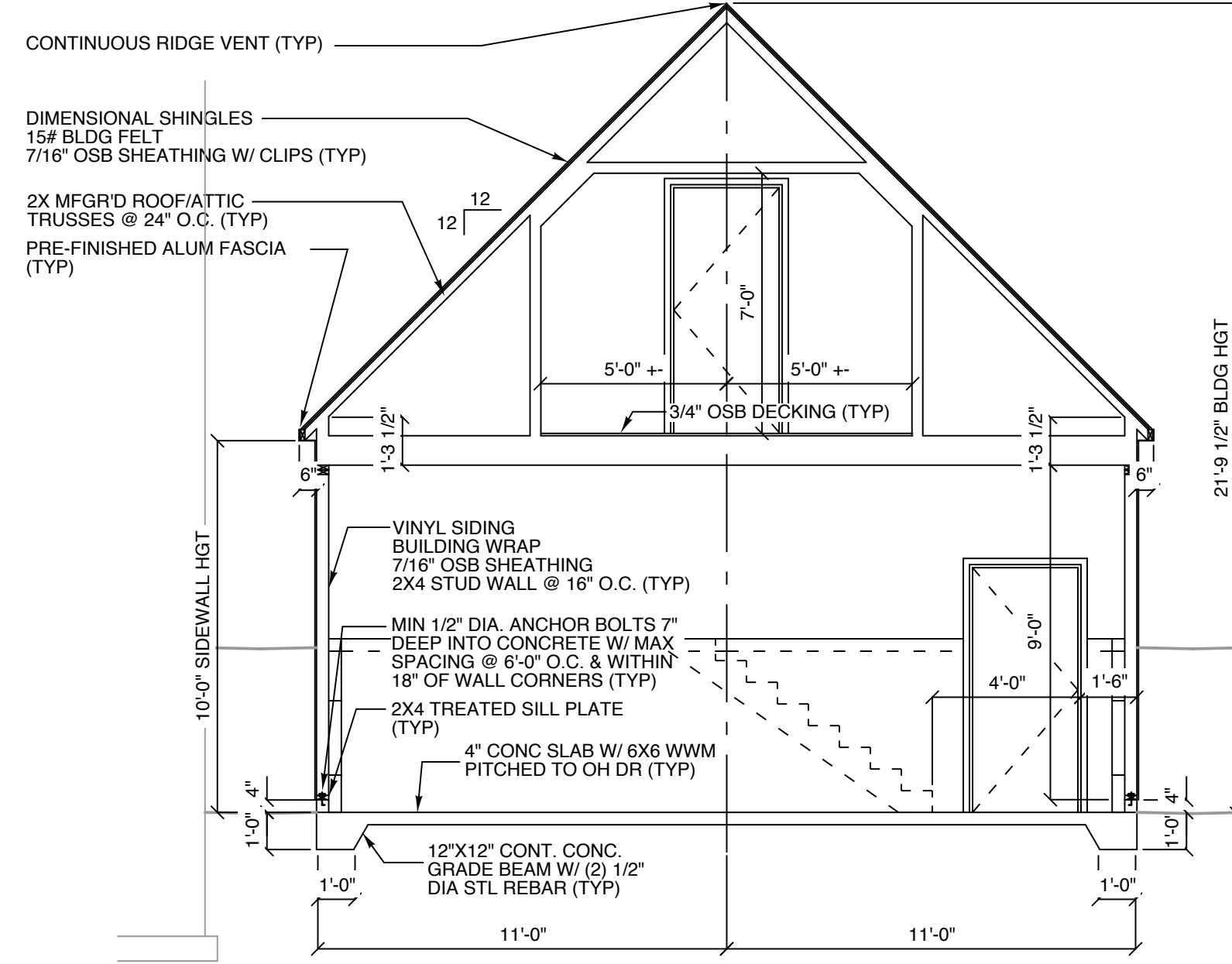
ANCHOR BOLTS PER SPS 321.25-A  
SPRINGS PER SPS 321.25-A  
WALL BRACING PER SPS 321.25-G

OVER CONCRETE OR MASONRY FLOOR PENETRATION  
MAX. 1/2" FLUTE TO  
MIN. 1/2" FLUTE TO

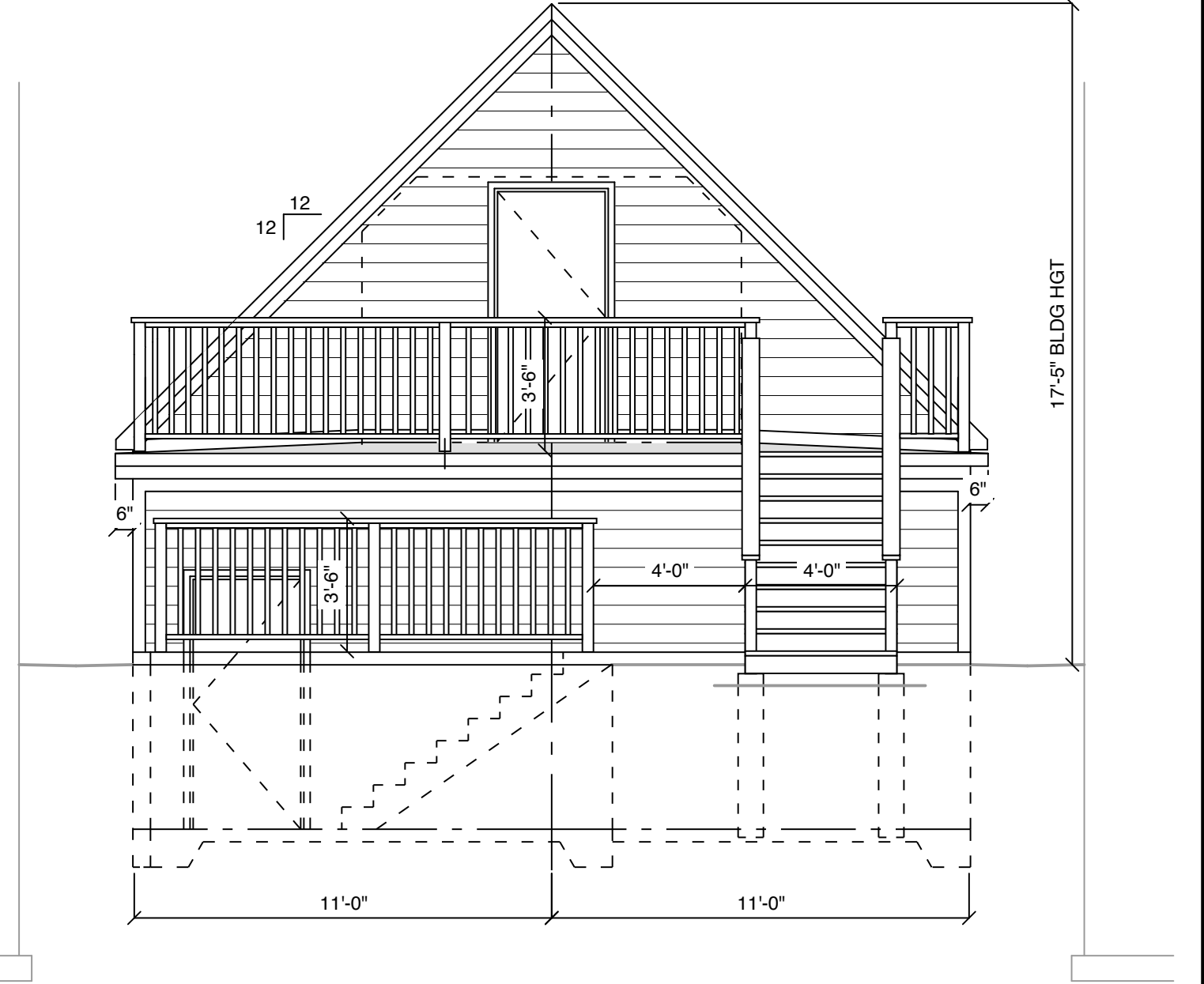
CHOSEN WALL BRACING @ GARAGE DOOR WALLS



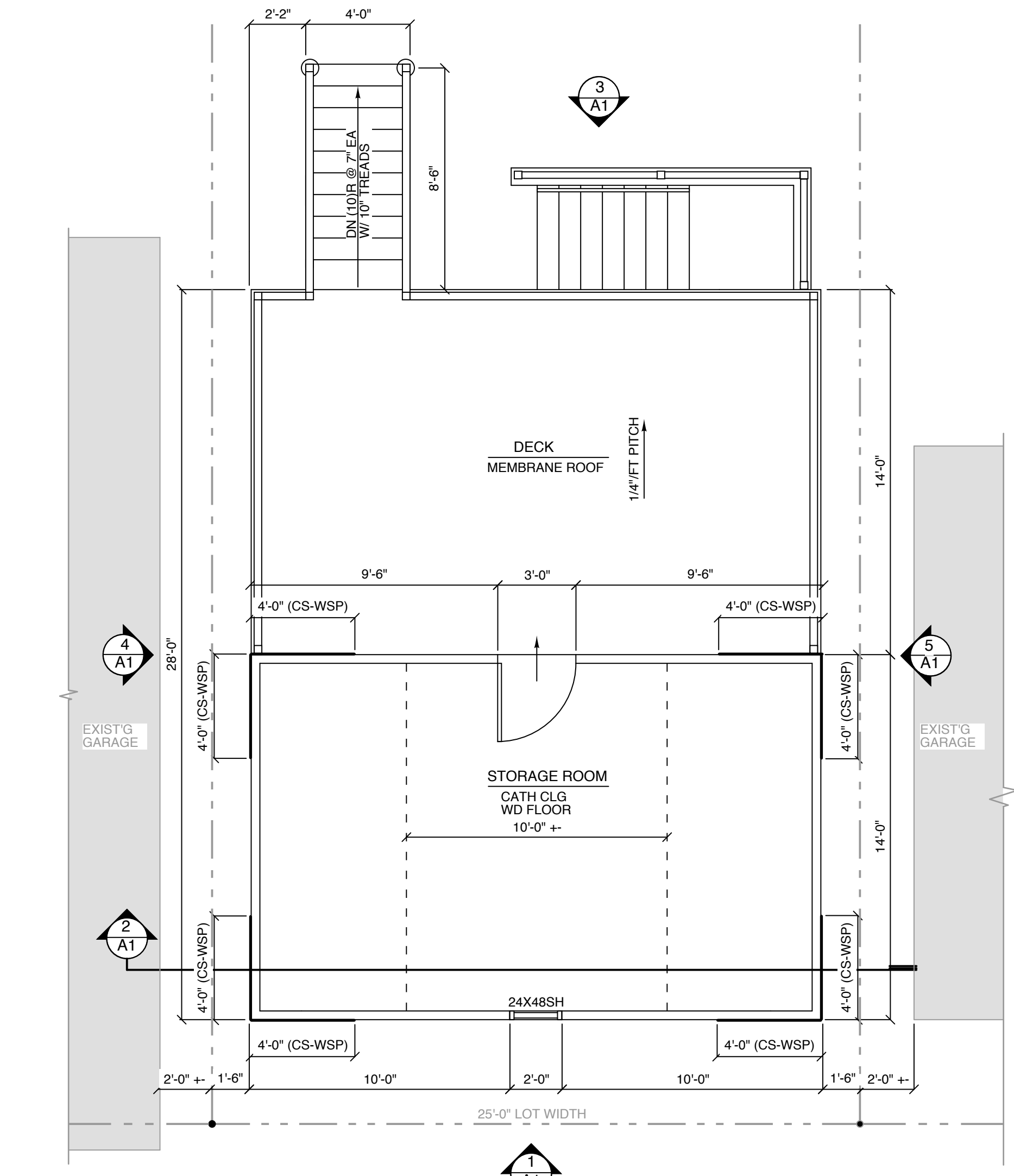
**1 FRONT EXTERIOR ELEVATION**  
SCALE: 1/4" = 1'-0"



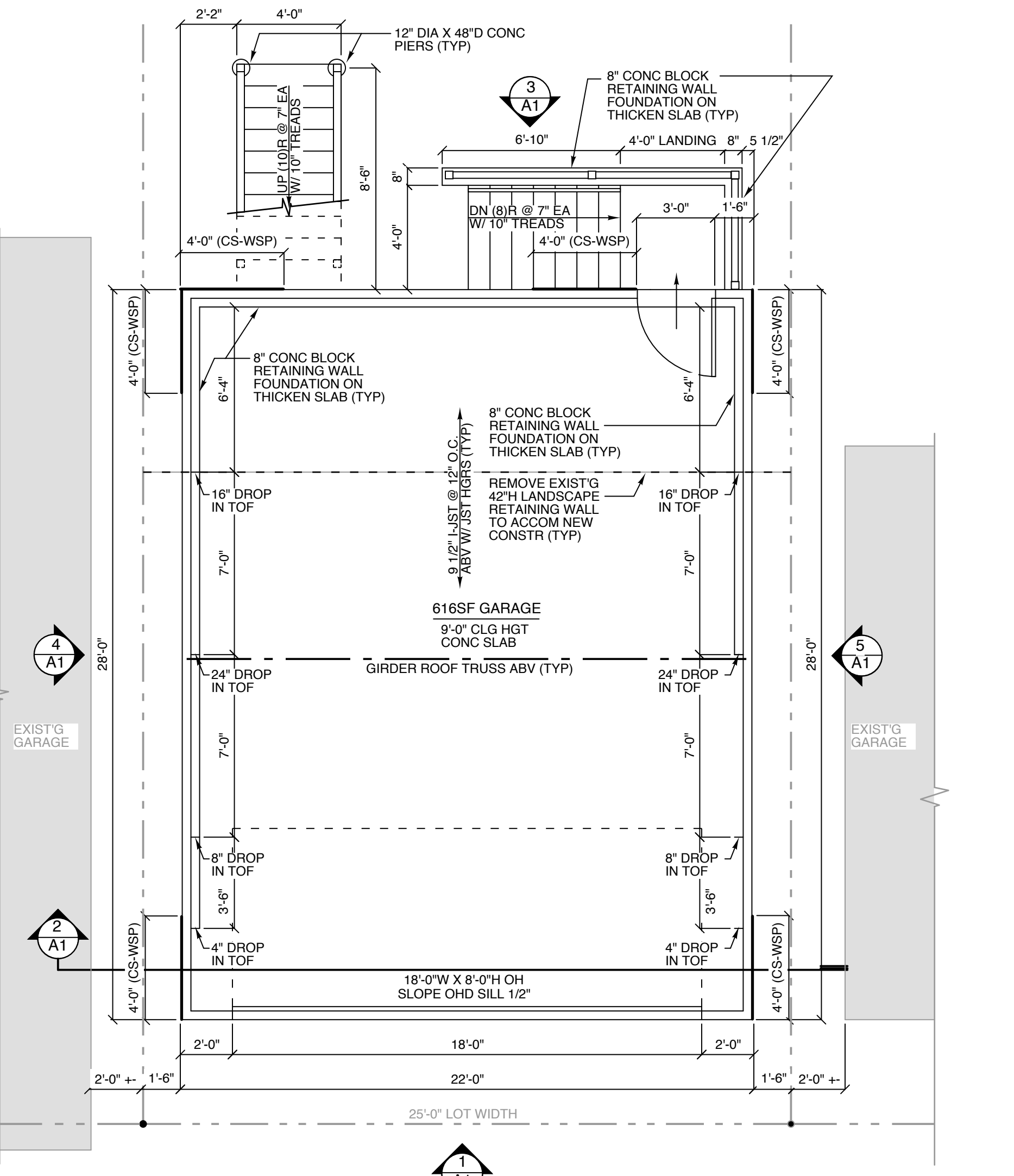
**2 TYPICAL WALL SECTION**  
SCALE: 1/4" = 1'-0"



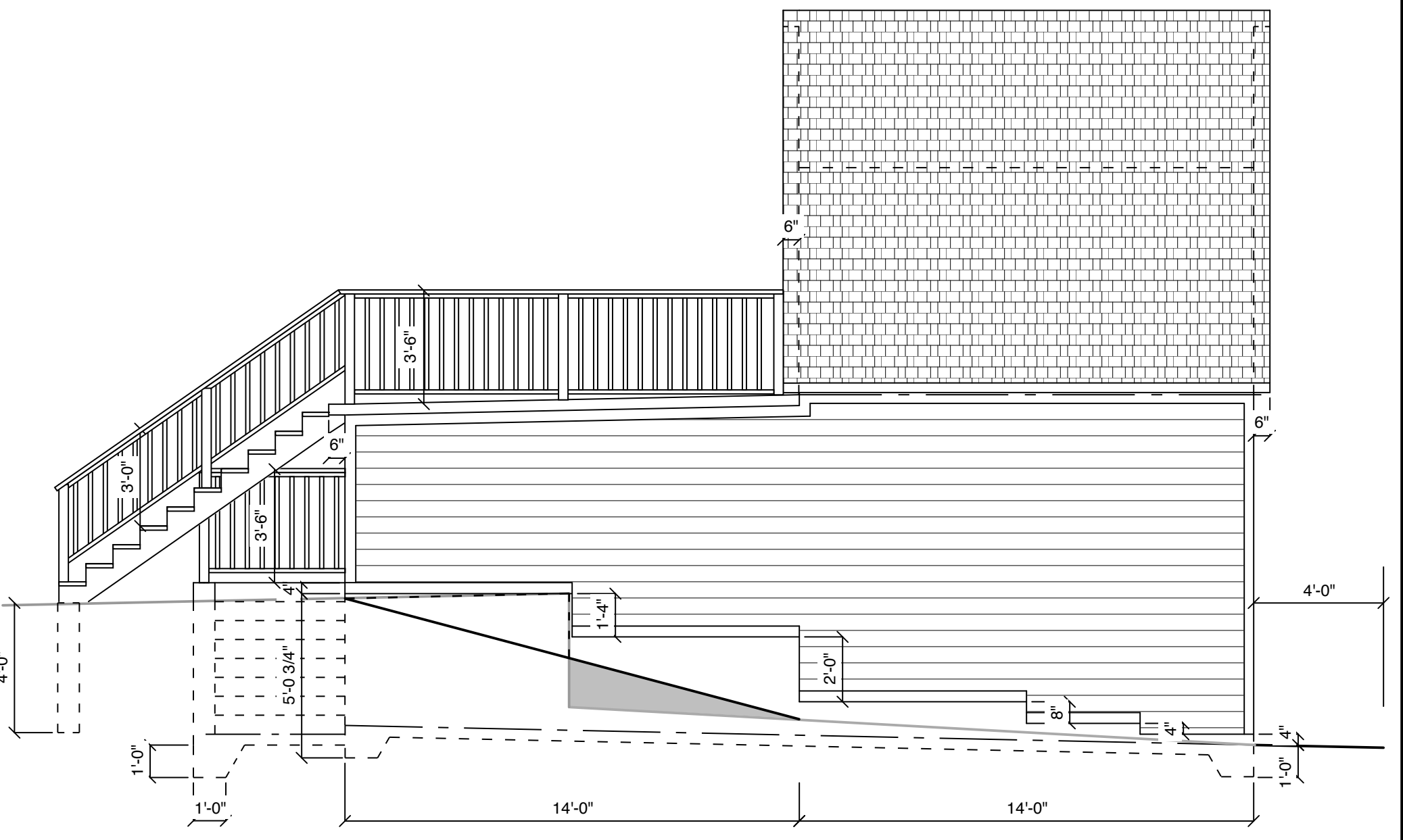
**3 REAR EXTERIOR ELEVATION**  
SCALE: 1/4" = 1'-0"



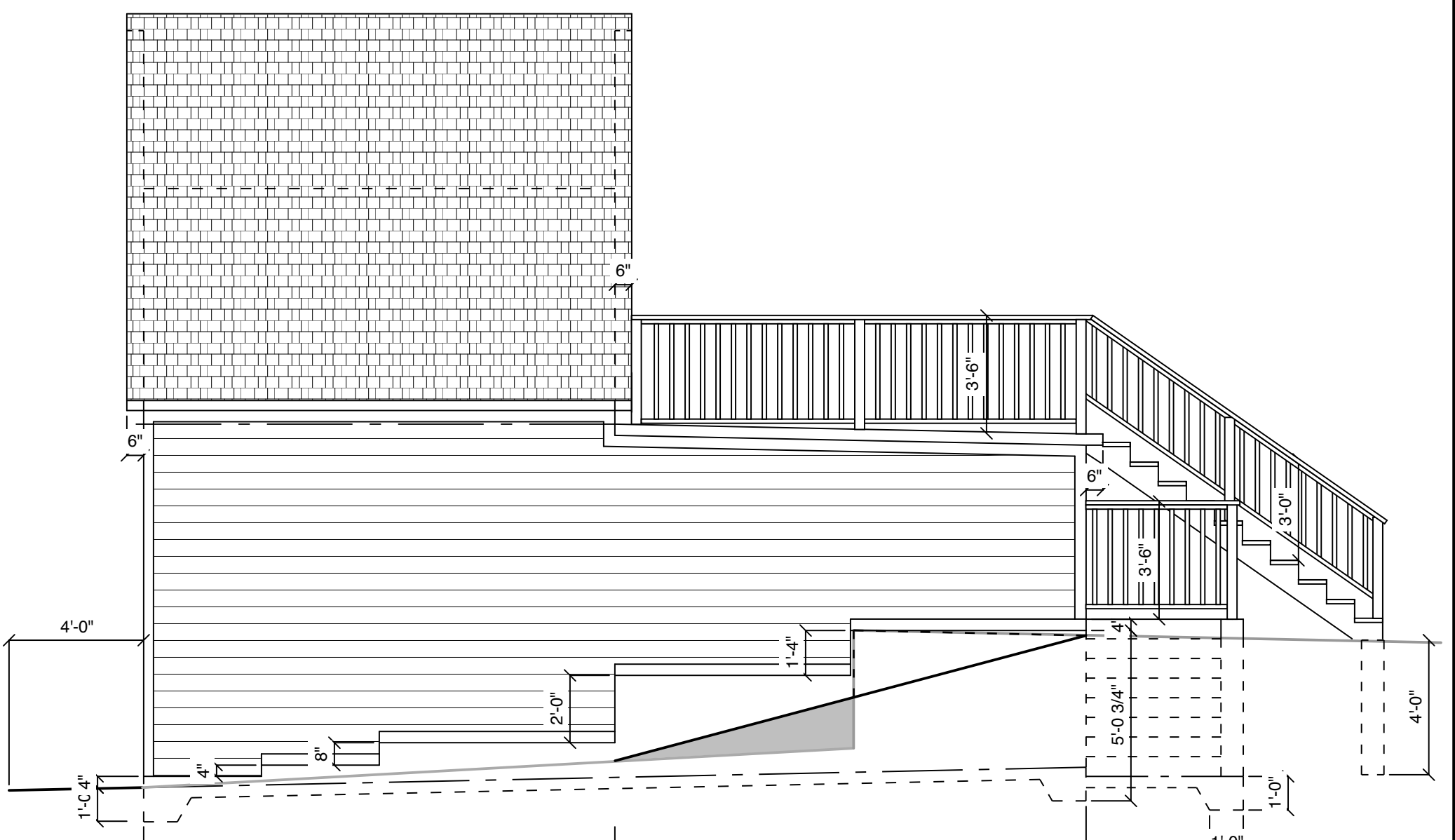
**PROPOSED STORAGE ROOM/ DECK PLAN**  
SCALE: 1/4" = 1'-0"



**PROPOSED GARAGE PLAN**  
SCALE: 1/4" = 1'-0"



**4 LEFT EXTERIOR ELEVATION**  
SCALE: 1/4" = 1'-0"



**5 RIGHT EXTERIOR ELEVATION**  
SCALE: 1/4" = 1'-0"

REVISIONS:  
10 SEPTEMBER 2017  
5 OCTOBER 2017

AMERICAN GARAGE BUILDERS-SEDITA  
NEW CONSTRUCTION  
2019 N. PALMER ST.  
MILWAUKEE, WI 53212

SHEET TITLE  
PROPOSED FLOOR  
PLAN, BUILDING  
SECTION &  
EXTERIOR  
ELEVATIONS  
DRAWN  
GE  
CHECKED  
GE  
DATE  
30 AUGUST 2017  
JOB NO.  
2017.11.24  
SHEET  
**A1**  
OF