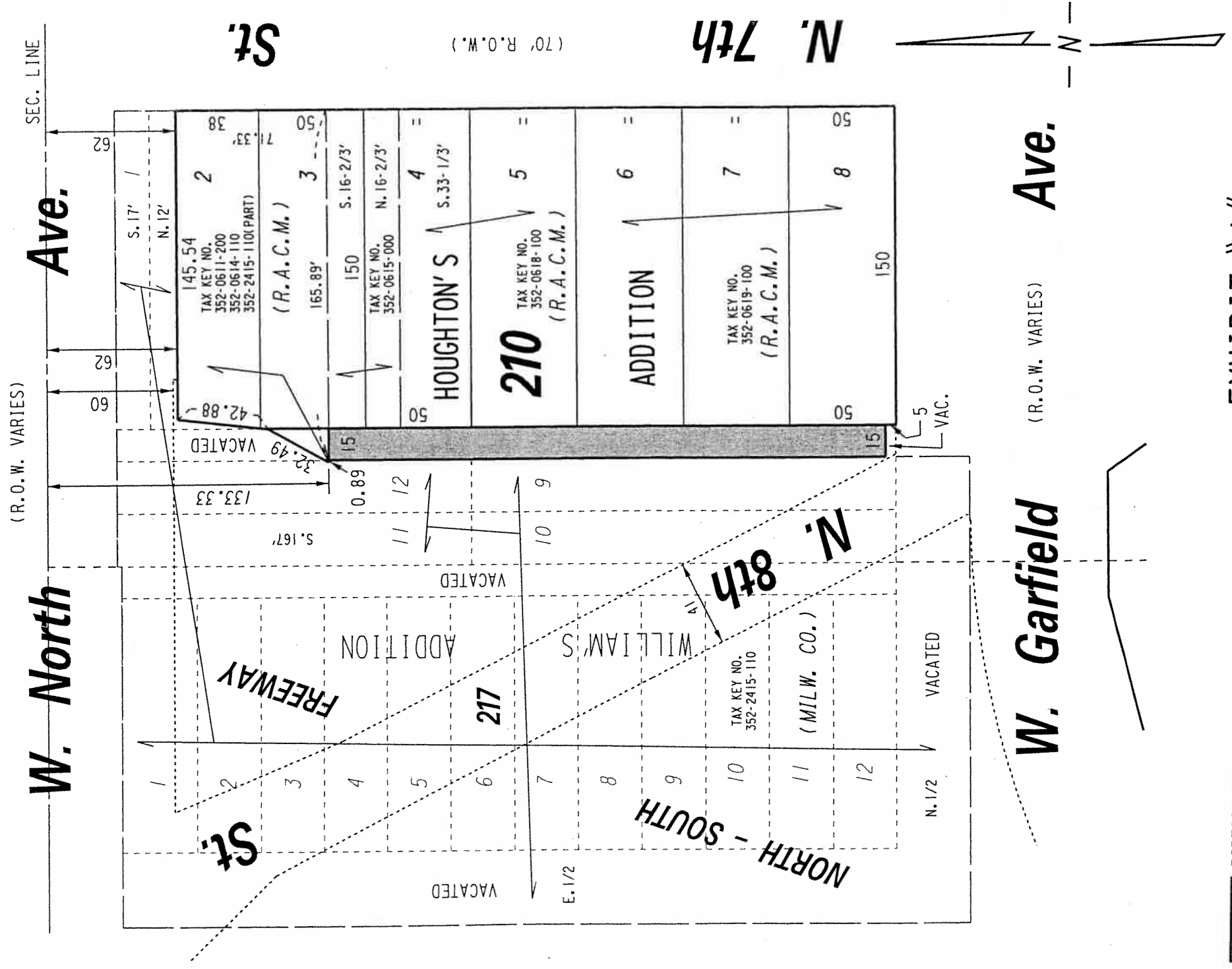


352

N.W. 1/4 SEC. 20, T.7N., R.22E.



 PORTION OF PUBLIC ALLEY PROPOSED TO BE VACATED

EXHIBIT "A"
FILE NO. 071680

INFRASTRUCTURE SERVICES DIVISION
MILWAUKEE, WISCONSIN

ASSIGNED TO: W.E. FUCHS
DRAWN BY: W.E.F.
PROJECT/GRANT NO.: WK52337262
APPROVED BY:
CH'K'D. BY: W.E. FUCHS
DATE: MAY 12, 2008
SCALE: 1" = 60'

Maicia Lindholm
CENTRAL DRAFTING & RECORDS MANAGER

[Signature]
CITY ENGINEER