

FN 031747

HELLMUTH, OBATA + KASSABAUM, INC.



Planning Group

April 27, 2005

City Hall
200 E. Wells Street
Milwaukee, WI 53202
Attn: City of Milwaukee Common Council

Re: Columbia St. Mary's – Prospect Medical Commons Detailed Plan Development

Dear City of Milwaukee Common Council:

On behalf of our clients, Columbia St. Mary's Hospital, HOK is pleased to resubmit project documentation related to the above-referenced project which has resulted from discussions and meetings held with City staff, the Plan Commission, the Development, Neighborhoods and Zoning Committee and, the public:

1. The project has been renamed Prospect Medical Commons.
2. Our original Project Description and Owners Statement of Intent misstated the number of medical office floors in the first sentence under Detailed Context. Four levels of medical office suites are proposed, not five.
3. The service dock screen wall has been modified. A masonry and metal panel system has been replaced with a woven-wire metal fence.
4. The landscape plan on the south side of the service dock screen has been revised, in part, to provide the vines that are an integral component of a "green screen" woven-wire metal fence system.
5. Ornamental wrought iron benches in a size and shape that match the Business Improvement District design standard will be used in place of previously-proposed benches.
6. The North Ave. storefront elevation has changed and five brick columns are more vertically articulated.
7. The garage elevation along Farwell Ave. has changed and a center column is more vertically articulated.
8. A specific proposal will be developed and reviewed with staff related to additional signage and graphics requested by the City on the north-facing parking structure wall along Farwell Ave.
9. Another proposal to provide public art, at a cost not exceeding \$25,000, will be provided by the project. This also needs to be developed and reviewed with staff over the next few months.

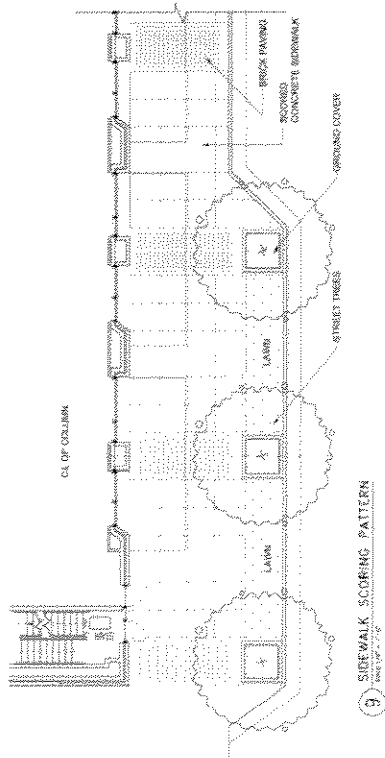
Should there be any questions about these revisions, feel free to call at any time.

Sincerely,
Hellmuth, Obata + Kassabaum

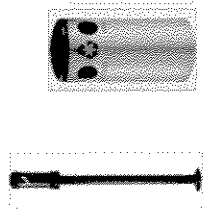
A handwritten signature in black ink that reads "W. W. Palmer".

William W. Palmer, ASLA
Group Vice President
Project Planning Representative

cc: P. Westrick, C. Smocke, B. Block, File

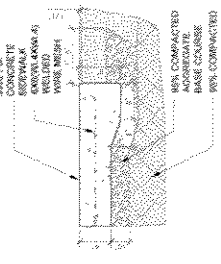


9 SIDEWALK SCORING PATTERN
 PART 1 OF 2

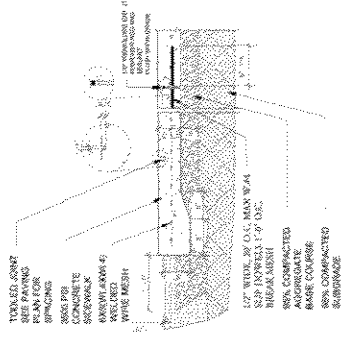


6 CLASSIC BUTTLER
 Form - Surfaces

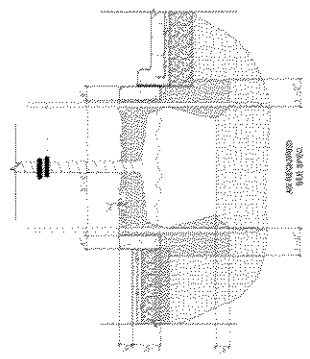
6 TRASH/ASH RECEPTACLE
 FORM - SURF.



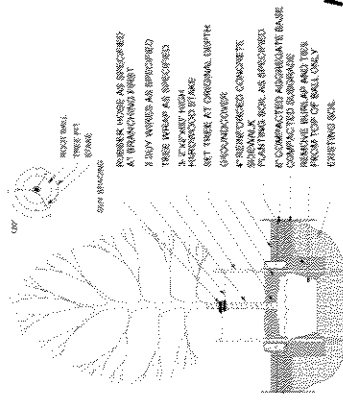
3 CONCRETE SIDEWALK
 (HEAVY DUTY)
 PART 1 OF 2



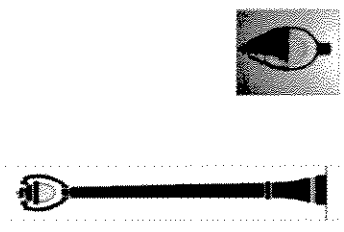
2 CONCRETE SIDEWALK JOINTS
 PART 1 OF 2



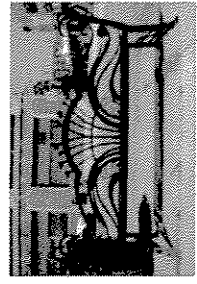
5 TREE PLANTING DETAIL
 PART 1 OF 2



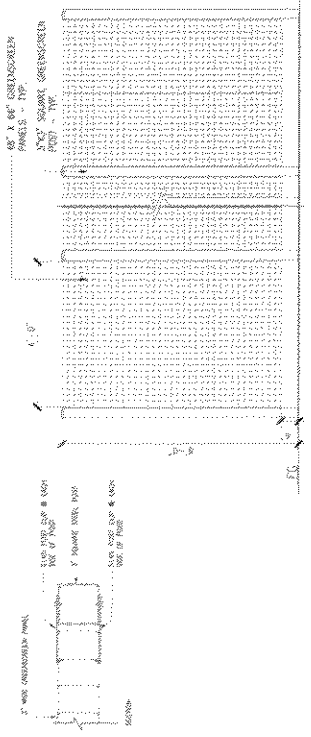
4 DECIDUOUS TREE
 PART 1 OF 2



7 STREET LIGHT (USE CITY STANDARD)
 PART 1 OF 2



8 BENCH
 PART 1 OF 2



10 MODULAR TRELLIS
 PART 1 OF 2

PROSPECT MEDICAL COMMONS
 DETAILED PLAN DEVELOPMENT



