

472

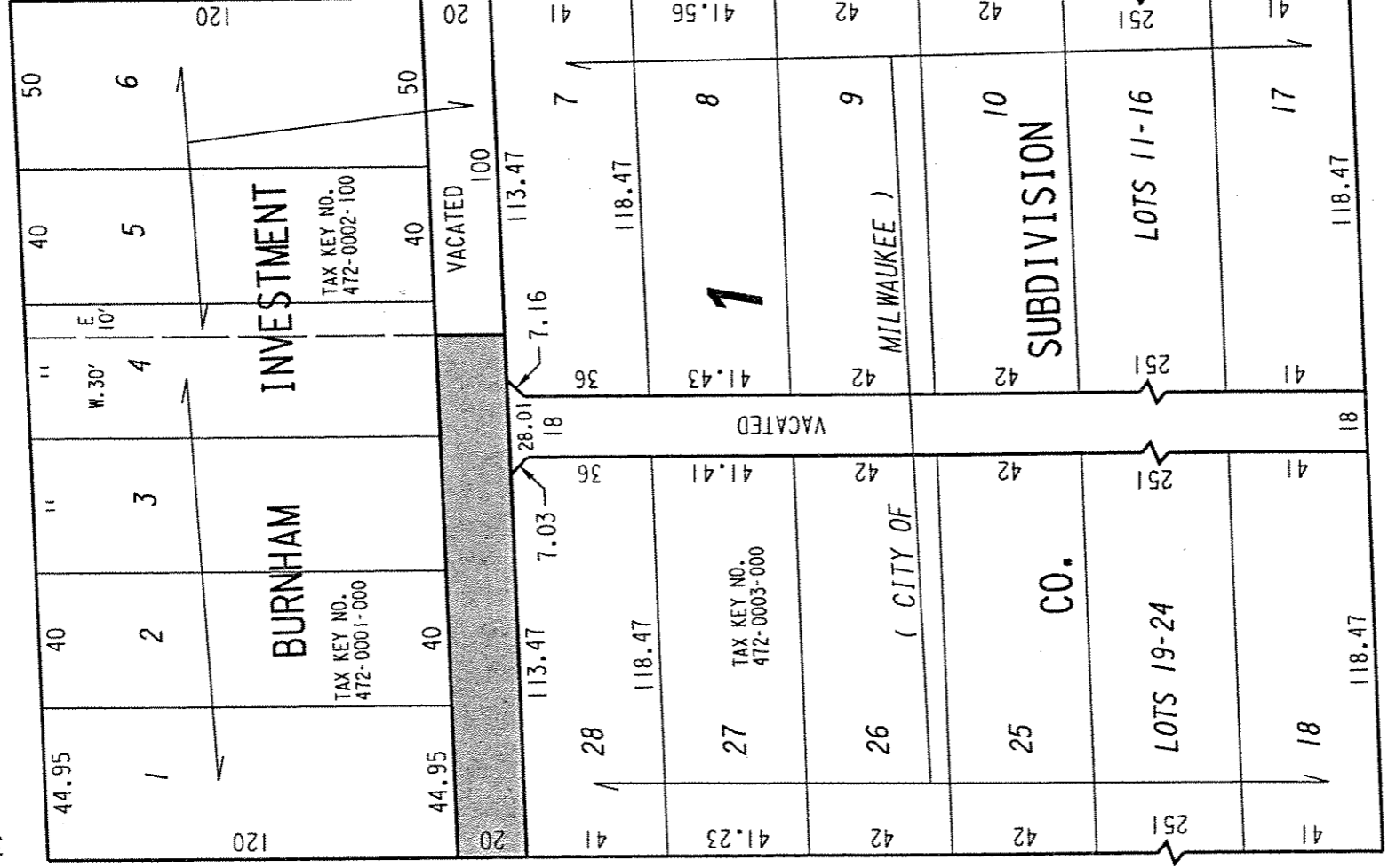
S.W. 1/4 SEC. 1, T.6N., R.2E.

(66' R.O.W.)

W. Burnham St.

1/4 SEC. LINE

33 33 45 45



(90' R.O.W.)

1/4 SEC. LINE

S. 35th

(60' R.O.W.)

S. 36th

W. Rogers St.

(60' R.O.W.)

PORTION OF PUBLIC ALLEY PROPOSED TO BE VACATED

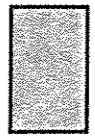


EXHIBIT "A"

FILE NO. 050591

INFRASTRUCTURE SERVICES DIVISION

MILWAUKEE, WISCONSIN

ASSIGNED TO: W.E. FUCHS

CH'K'D. BY: M.C. WILLIAMS

DRAWN BY: W.E.F.

DATE: SEPT. 13, 2002

PROJECT/GRANT NO.: WK52337167

SCALE: 1"=50'

APPROVED BY:

Marisa Lindholm
 CENTRAL DRAFTING & RECORDS MANAGER

Jeffrey Lumbke
 CITY ENGINEER