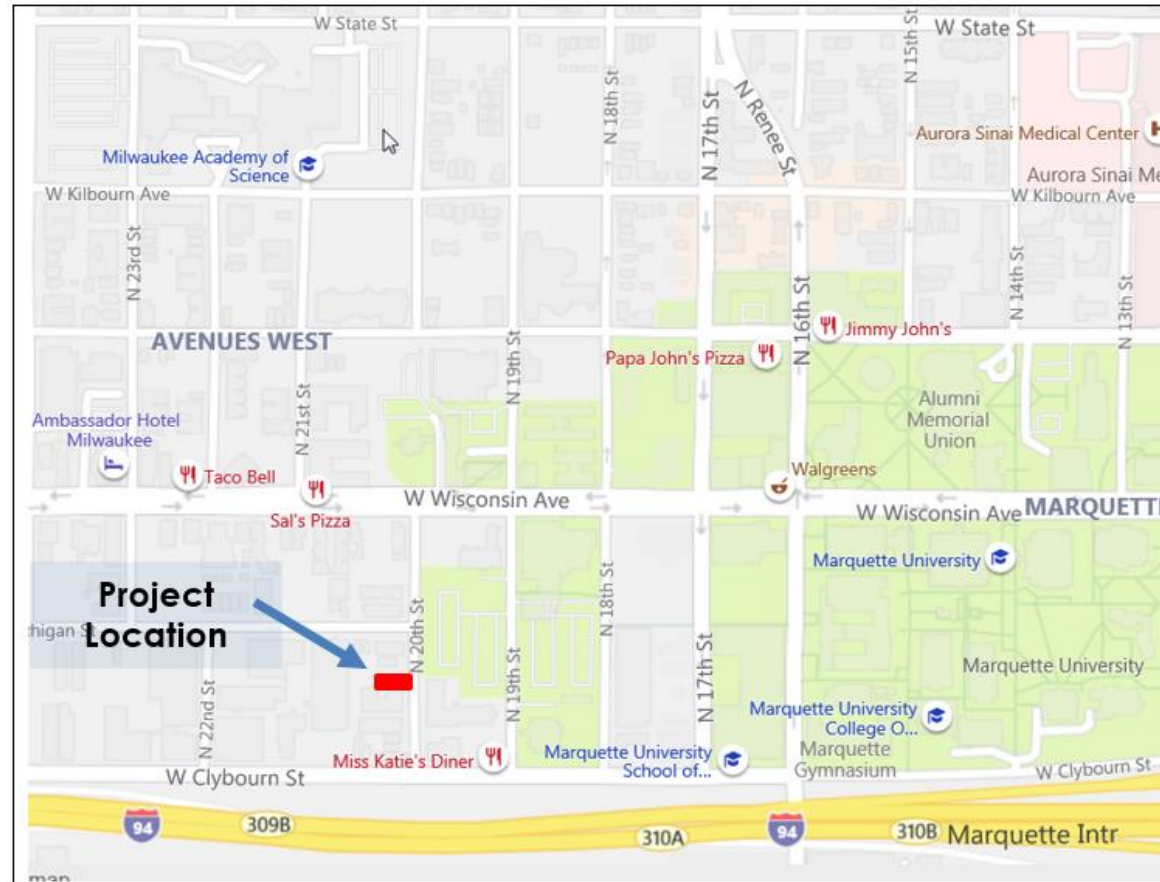
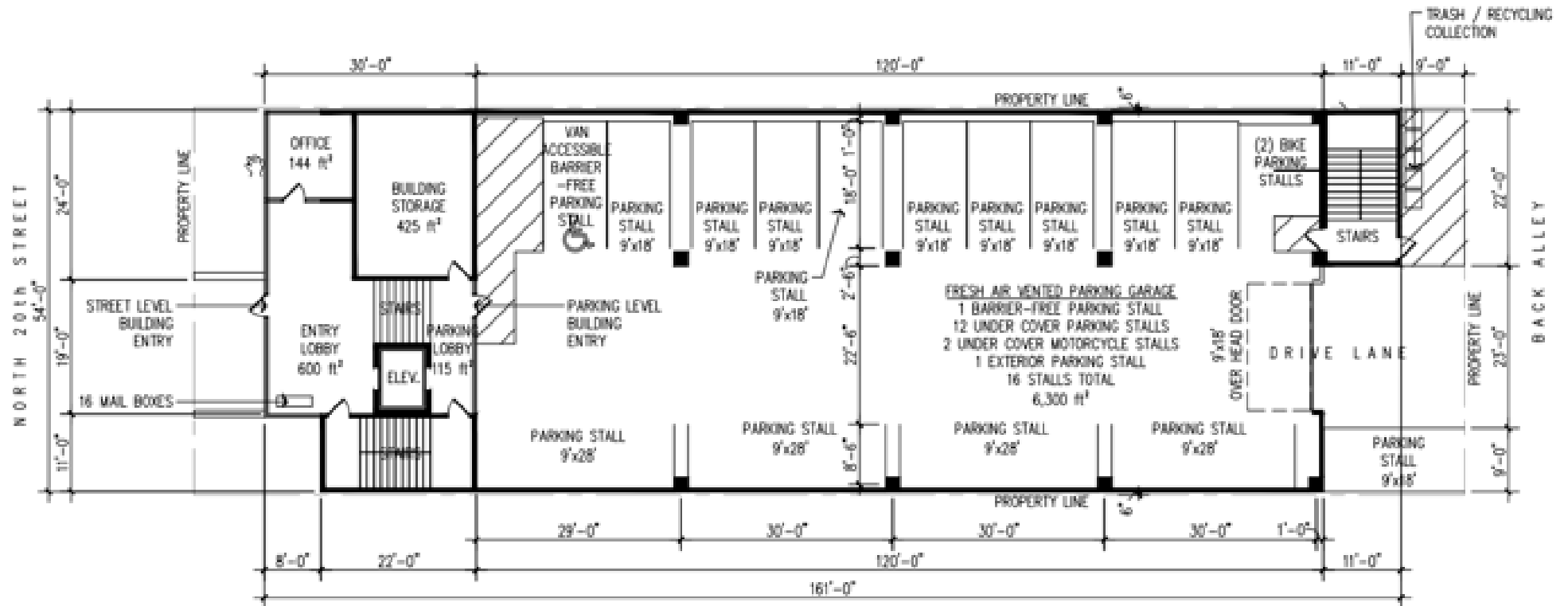


541 North 20th Street





Front Elevation – 541 North 20th Street



PRELIMINARY GROUND LEVEL FLOOR PLAN

1/8" = 1'-0"

INDOOR SPACE = 2,005 ft²
 PARKING AREA = 6,304 ft²
 TOTAL AREA THIS FLOOR = 8,309 ft²

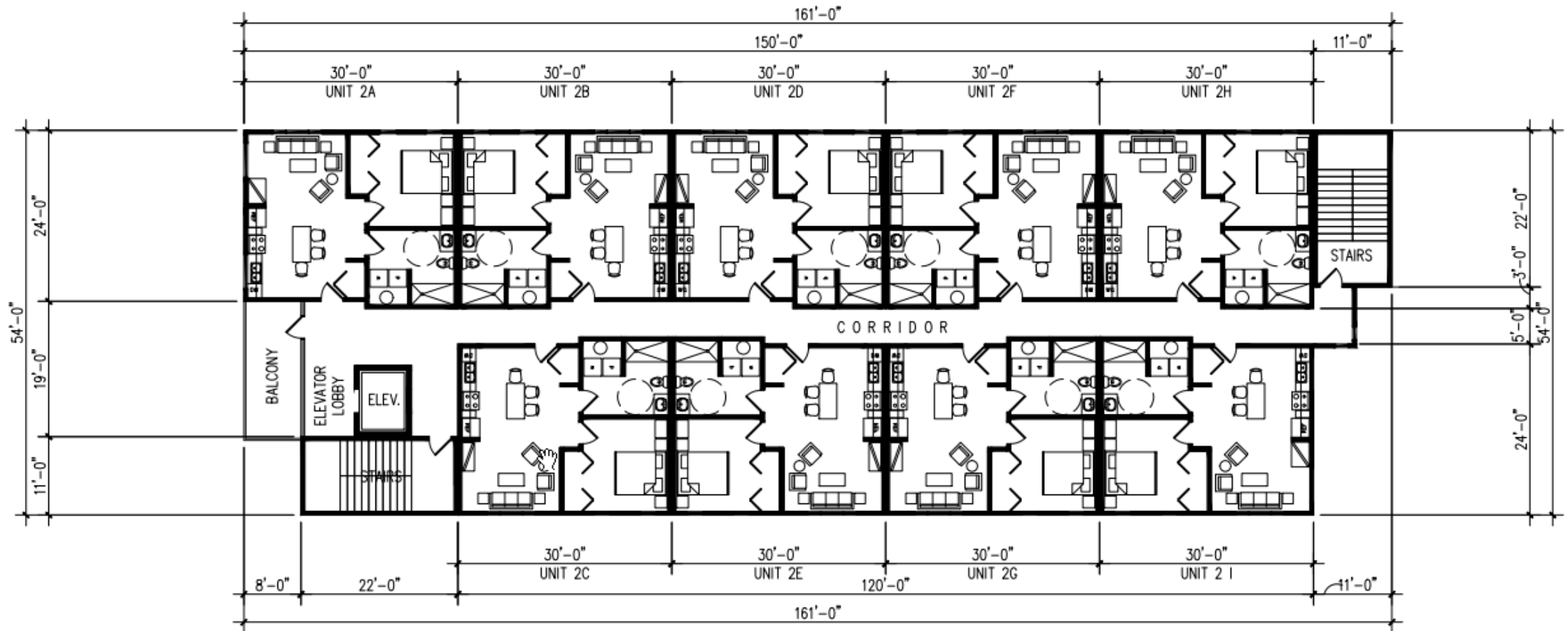


November 14, 2019

APARTMENT BUILDING AT 541 NORTH 20th STREET

REVISION 08

© 2019 MICHAEL A. CORRIGAN, P.E., ALA



PRELIMINARY SECOND FLOOR PLAN

$\frac{1}{16}'' = 1'-0''$

9 LIVING UNITS @ 725 ft² EACH = 6,525 ft²

PUBLIC AREAS/CIRCULATION = 1,784 ft²

TOTAL AREA THIS FLOOR = 8,309 ft²

