

1840 N Farwell Mixed Use Development March 14, 2016

Wiechmann  Enterprises

2769 N. Summit Ave., Milwaukee, WI 53211

p 414.961.2002 f 414.961.7787



KINDNESS
architecture+

CONTEXT



Courtesy of Northeast Side Comprehensive Plan

CONTEXT



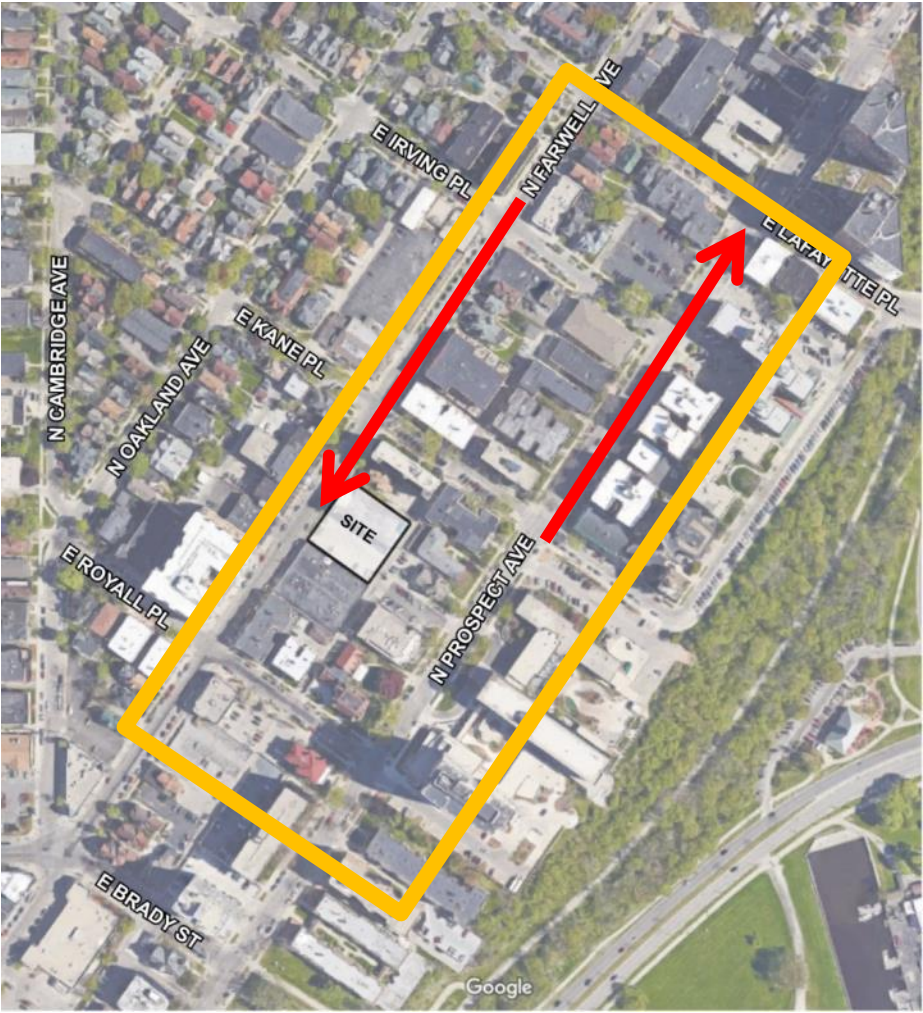
Courtesy of Northeast Side Comprehensive Plan

TRANSIT CORRIDOR



MILWAUKEE
comprehensive **Plan**
DEPARTMENT OF CITY DEVELOPMENT - July 21, 2009
Northeast Side
A Plan for the Area

CONTEXT



CONTEXT



VIEW LOOKING NORTH

CONTEXT



VIEW LOOKING WEST

CONTEXT



VIEW LOOKING SOUTH

CONTEXT

PROJECT SITE



CONTEXT



CONTEXT



CONTEXT



CONTEXT



NORTHEAST SIDE COMPREHENSIVE PLAN

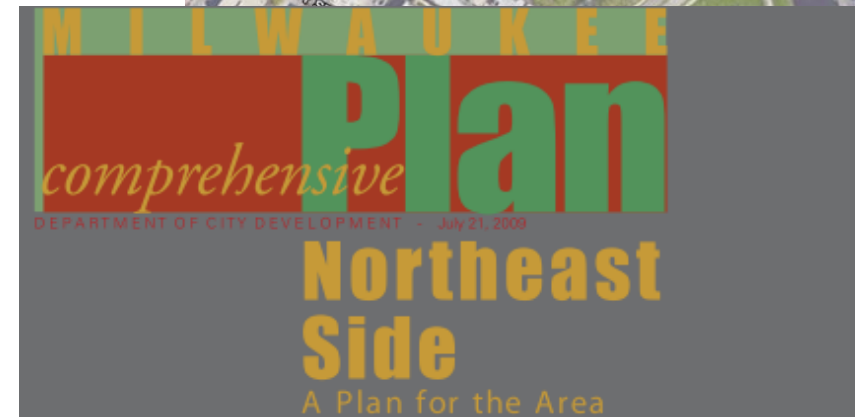
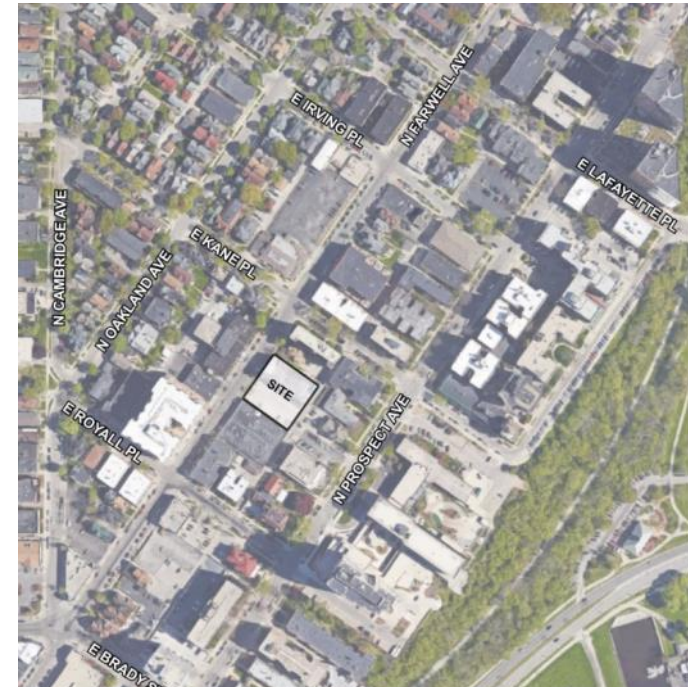


MILWAUKEE
Plan
comprehensive
DEPARTMENT OF CITY DEVELOPMENT - July 21, 2008
Northeast Side
A Plan for the Area

DESIGN PRINCIPLES:

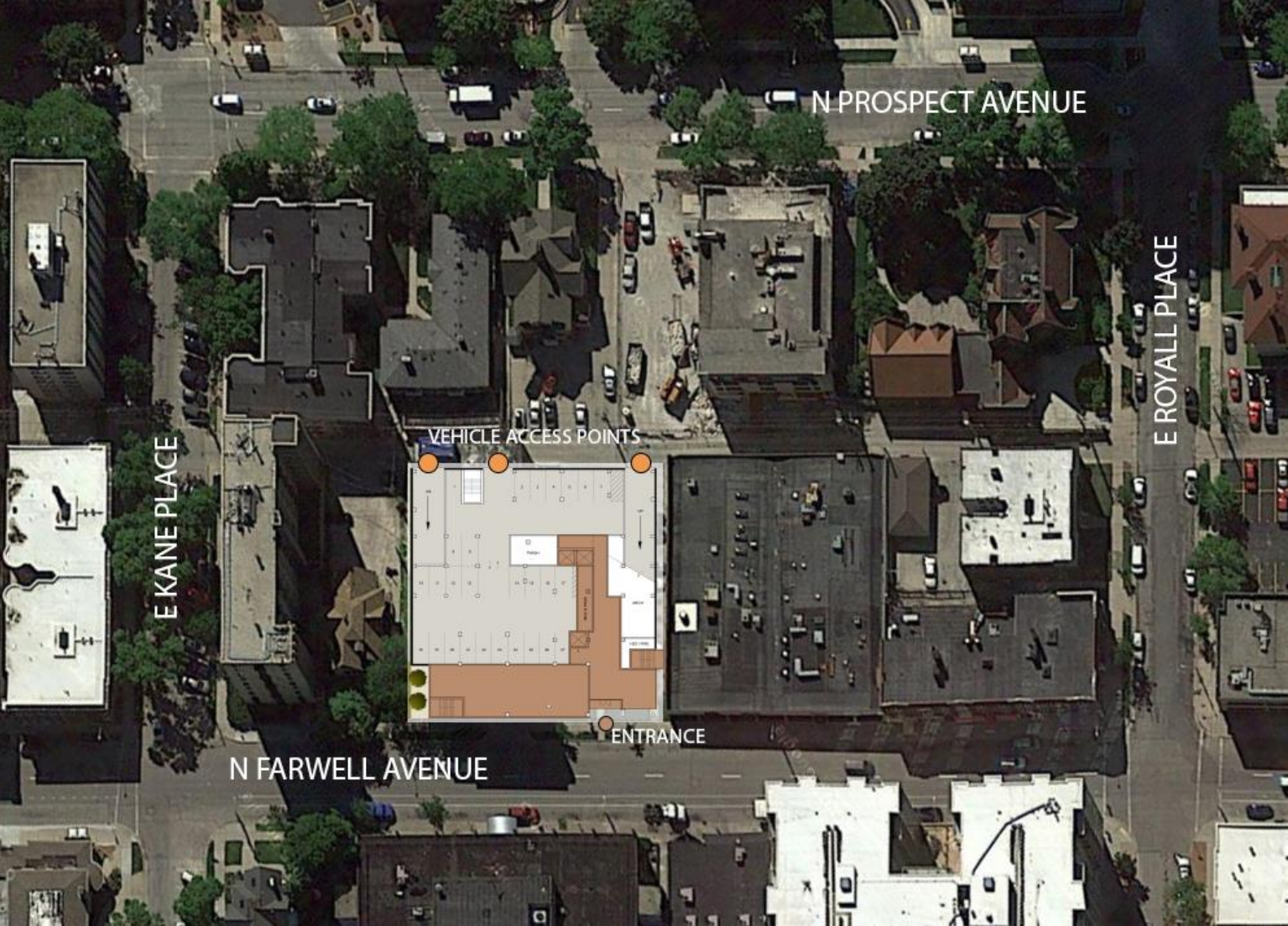
Consistency with the Plan, particularly with respect to:

- High Density Development in transit corridors (Streetcar & Bus line)
- Replacement of surface parking with structured parking
- Adding to the re-establishment of the traditional street edge onto a high traffic commercial street
- Acting as a catalyst for further commercial development of Farwell by adding commercial space

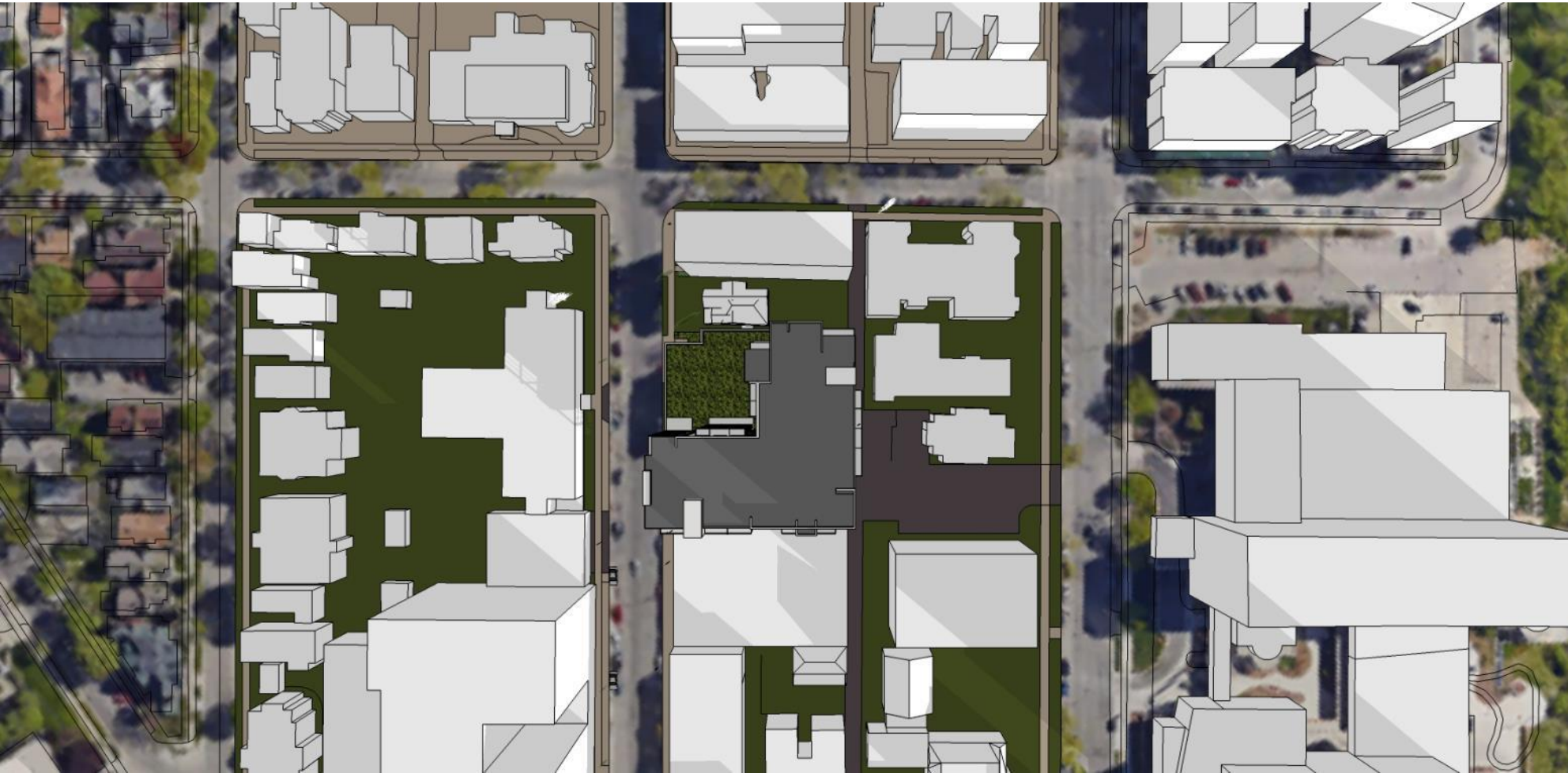


Proposed Project Includes:

- **Units: 153 (Mix of Studios, 1-B, 2-B & 3-B)**
- **Uses: 100% Animation on Farwell with Retail, Offices, Guest Suite, Fitness Center, Community Room, Lobby/Entrance**
- **Parking: 215 Spaces (1 per Bedroom + additional for retail and offices)**



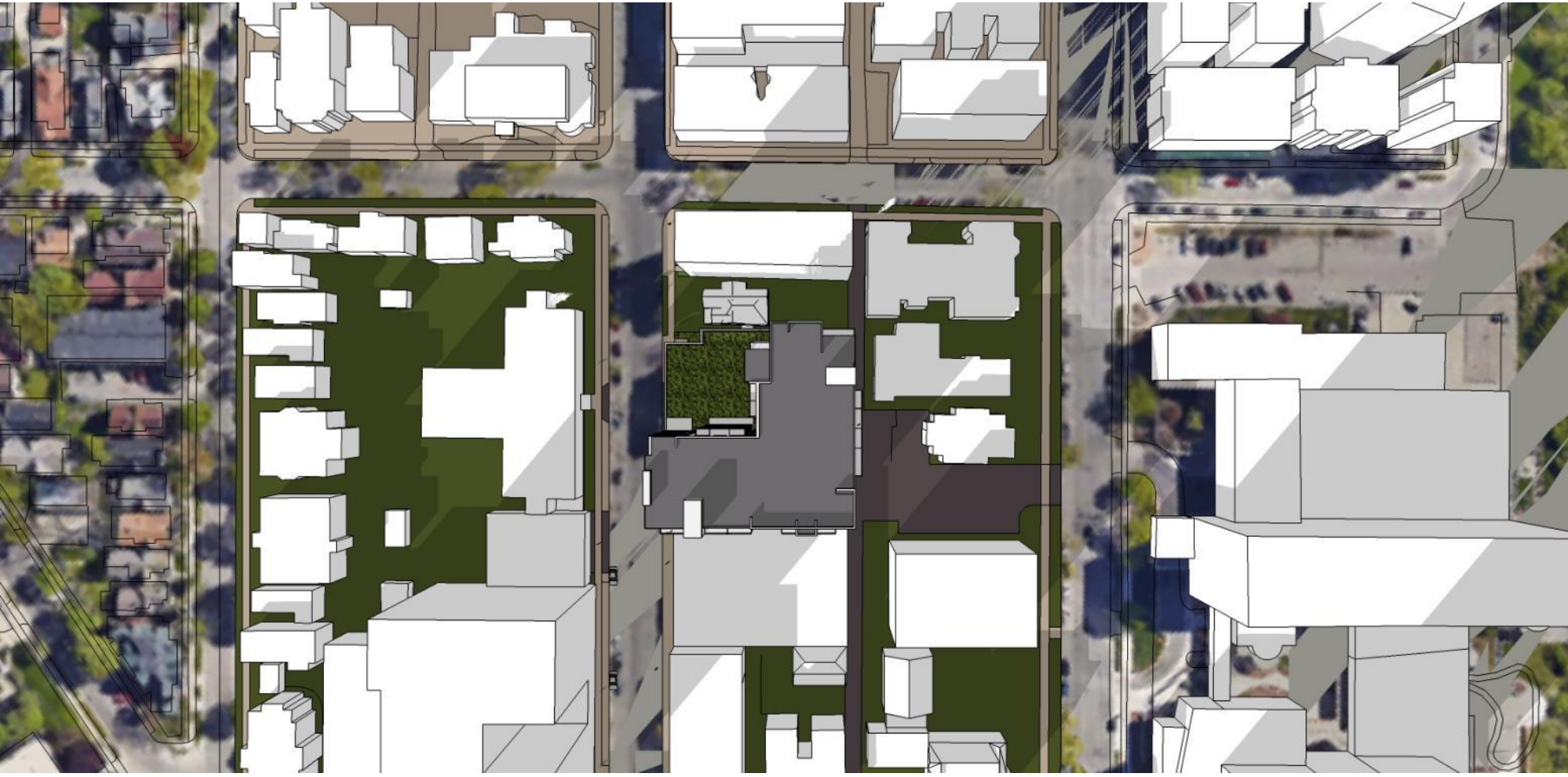
SUN STUDY: WINTER 8 AM



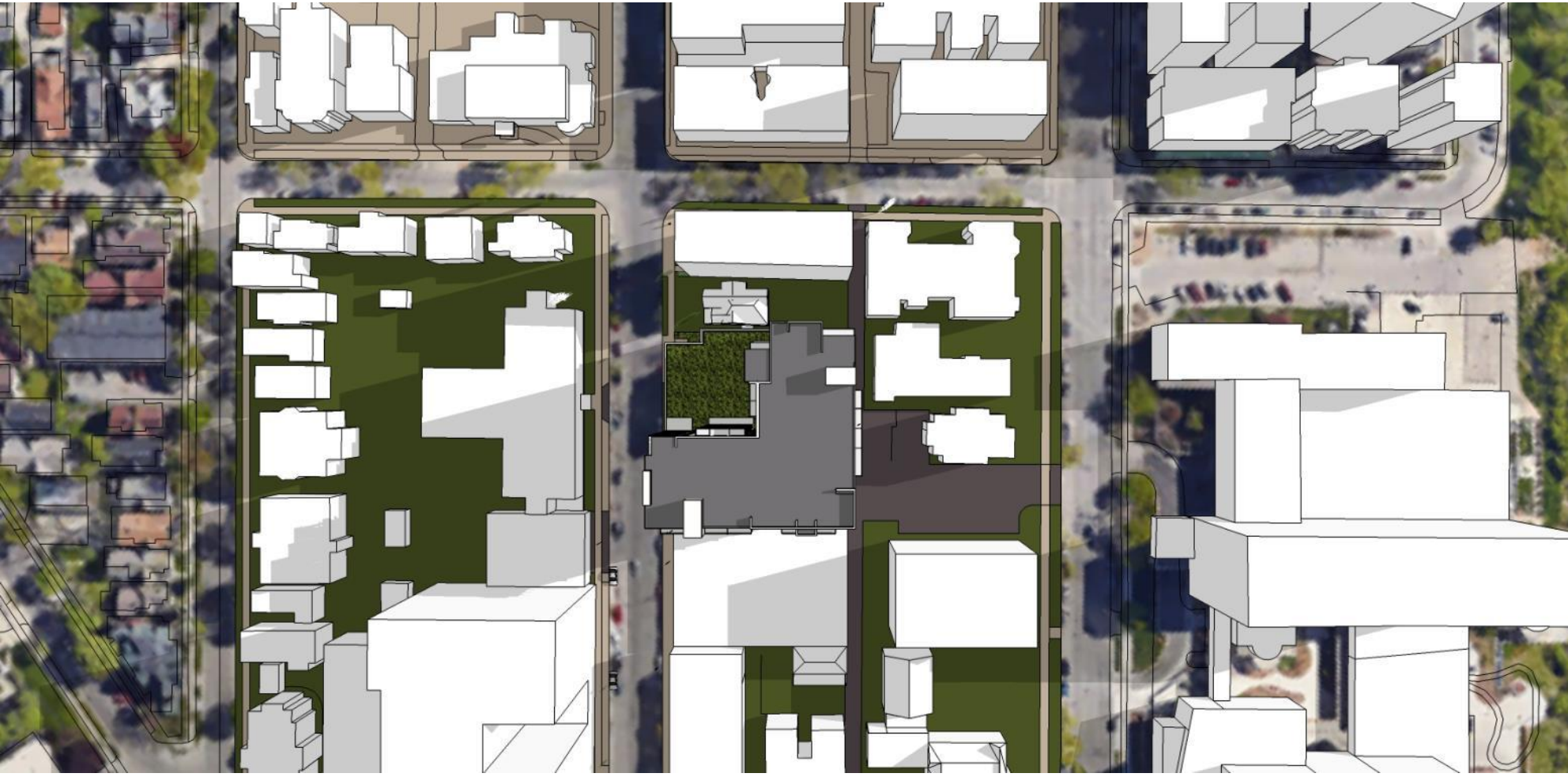
SUN STUDY: WINTER 12 PM



SUN STUDY: WINTER 5 PM



SUN STUDY: SUMMER 7 AM



SUN STUDY: SUMMER NOON



SUN STUDY: SUMMER 5 PM









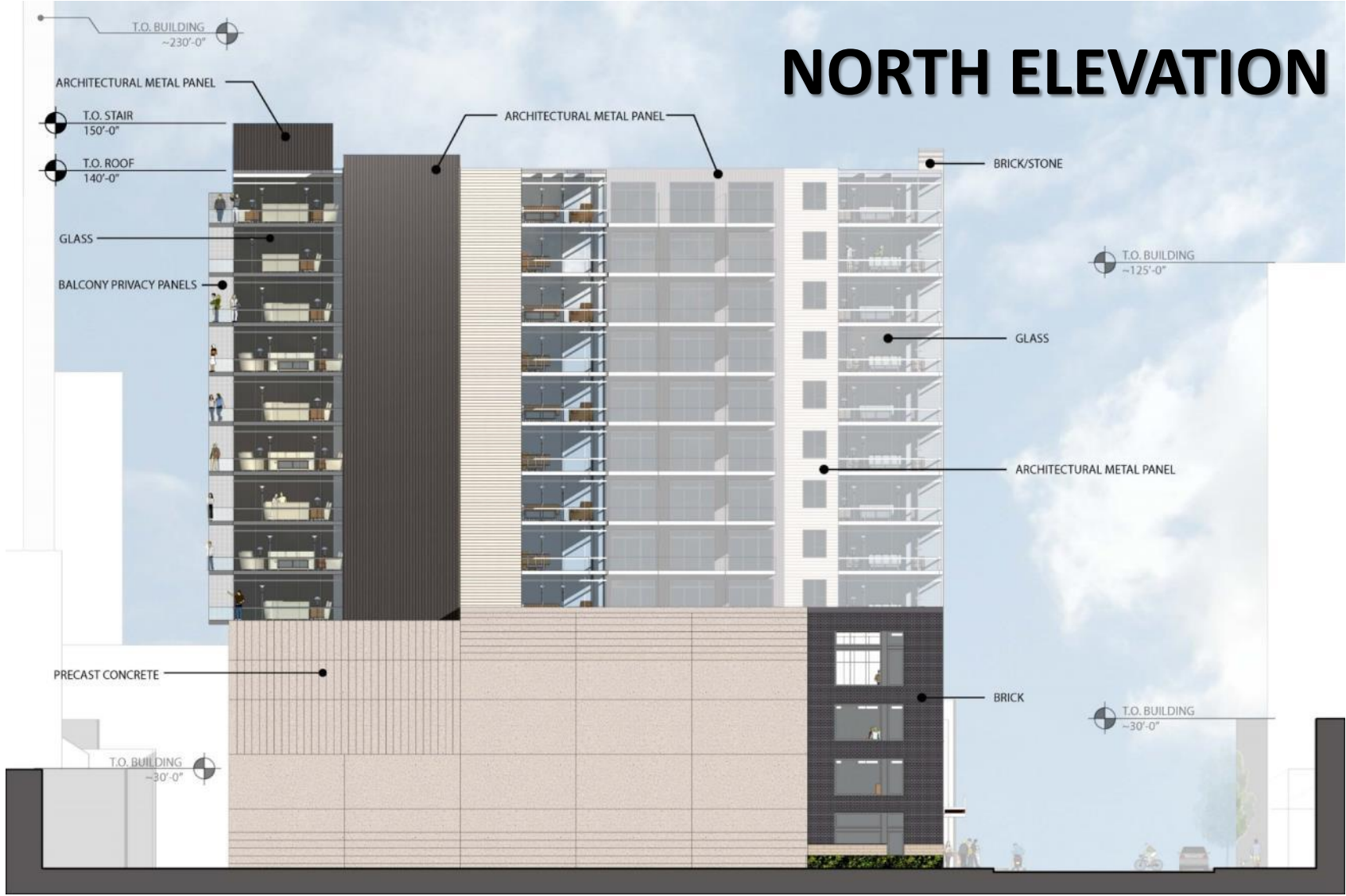




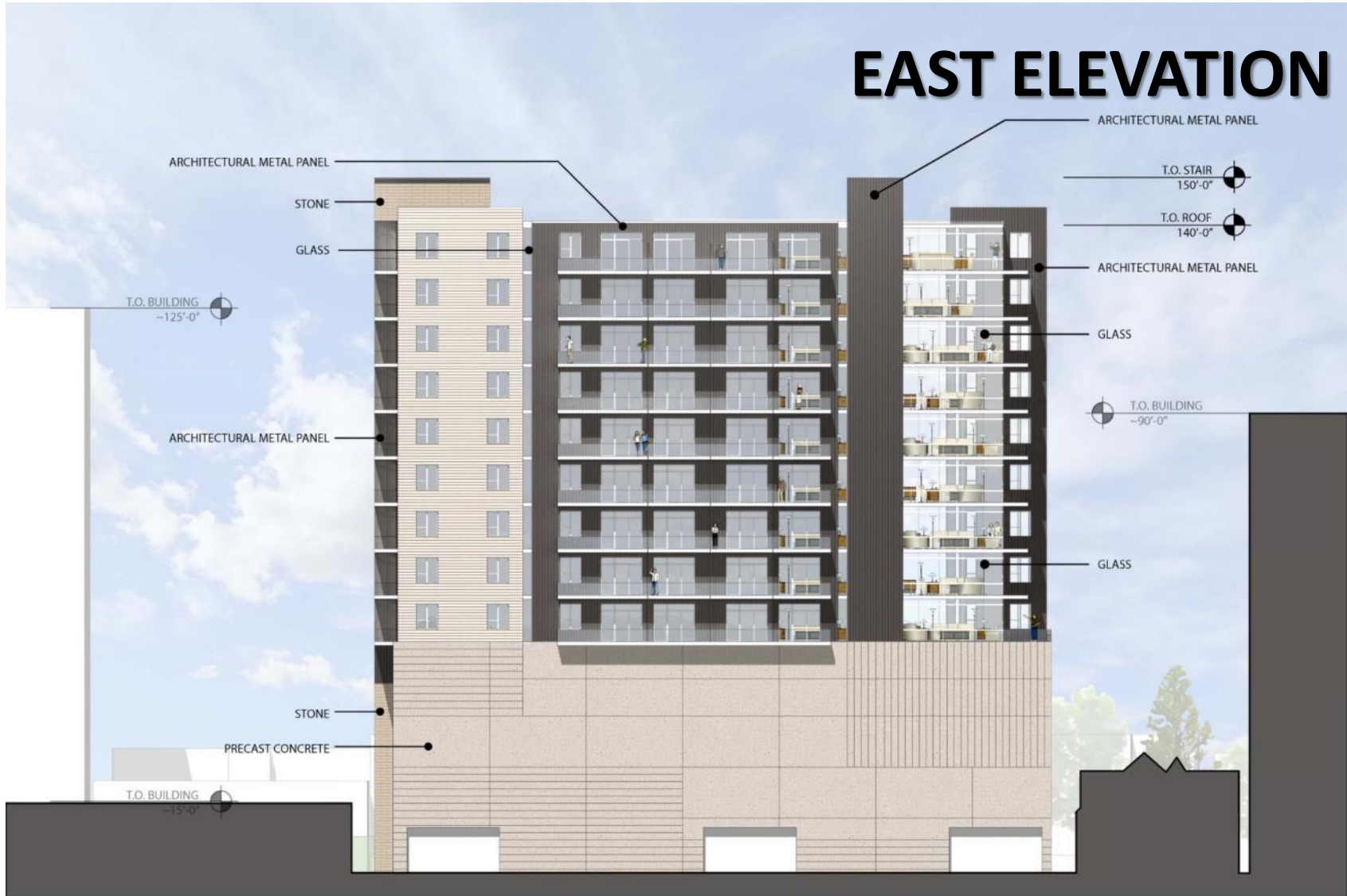
WEST ELEVATION



NORTH ELEVATION



EAST ELEVATION



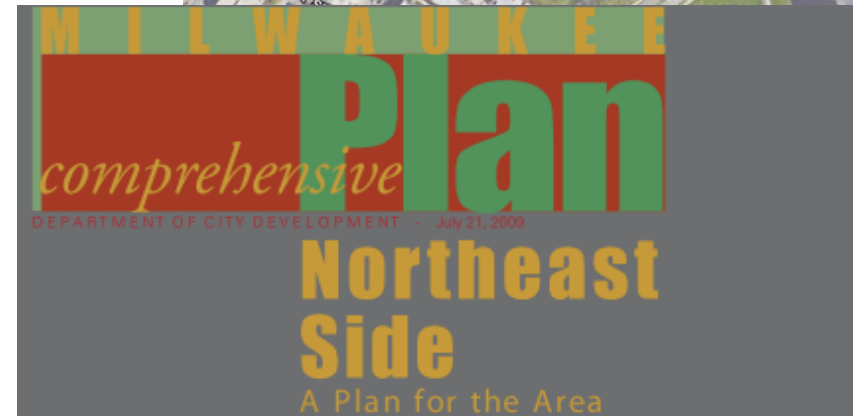
SOUTH ELEVATION



DESIGN PRINCIPLES:

Consistency with the Plan, particularly with respect to:

- High Density Development in transit corridors (Streetcar & Busline)
- Replacement of surface parking with structured parking
- Adding to the re-establishment of the traditional street edge onto a high traffic commercial street
- Acting as a catalyst for further commercial development of Farwell by adding commercial space





RETAIL

1840