

where flowers bloom so does hope

healing  
spodoes  
initiative

Finance and Personnel Committee

Presented by NIDC

April 13, 2022

# What is HSI

---

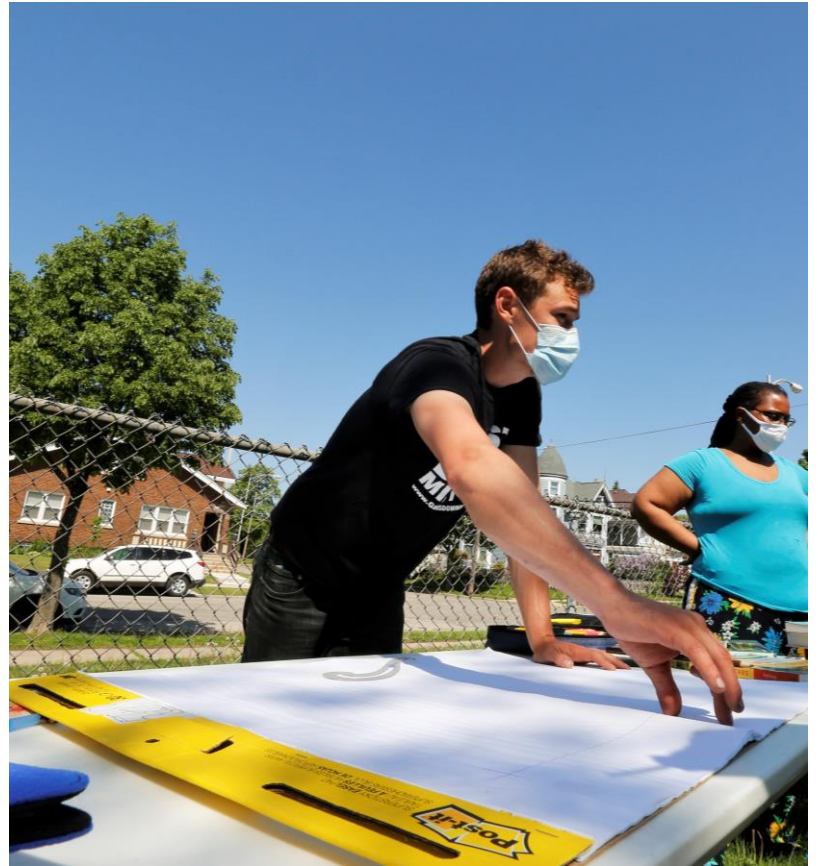
- Evolution of the Project
- Build relaxing natural environments on available city-owned lots or existing gardens
- Eliminate blighted spaces and engage neighbors
- Build pathways, benches, perennial flower gardens, Little Free Libraries, and more





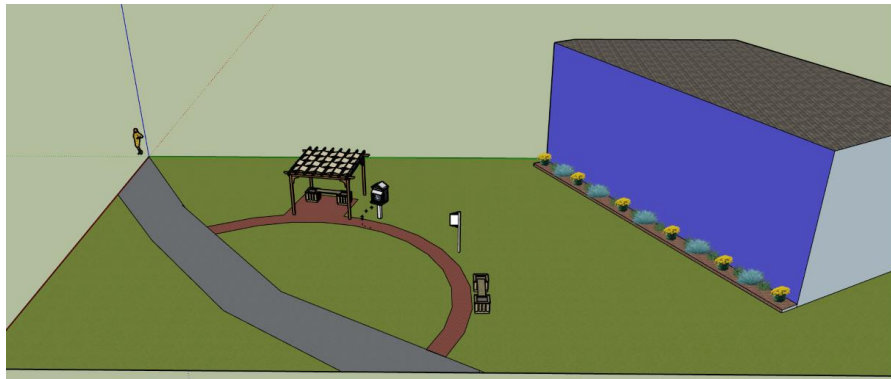
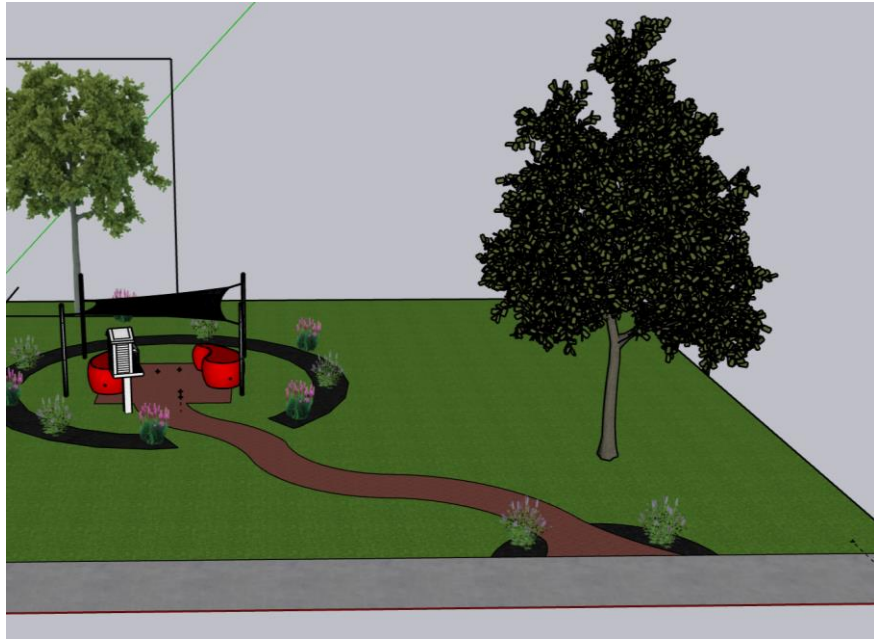
# Groundwork Milwaukee

- The mission of Groundwork Milwaukee is to bring about the sustained regeneration, improvement and management of the physical environment by developing community-based partnerships that empower people, businesses and organizations to promote environmental, economic and social well-being.



# Community Engagement Expertise

---



Design & Planning  
Expertise

---



# HSI By the Numbers

---

1033 doors knocked

---

21 Applicants

---

61 unique volunteers

---

35 visioning session attendees

---

~10 volunteers at each event

---

~7 residents at each visioning sessions

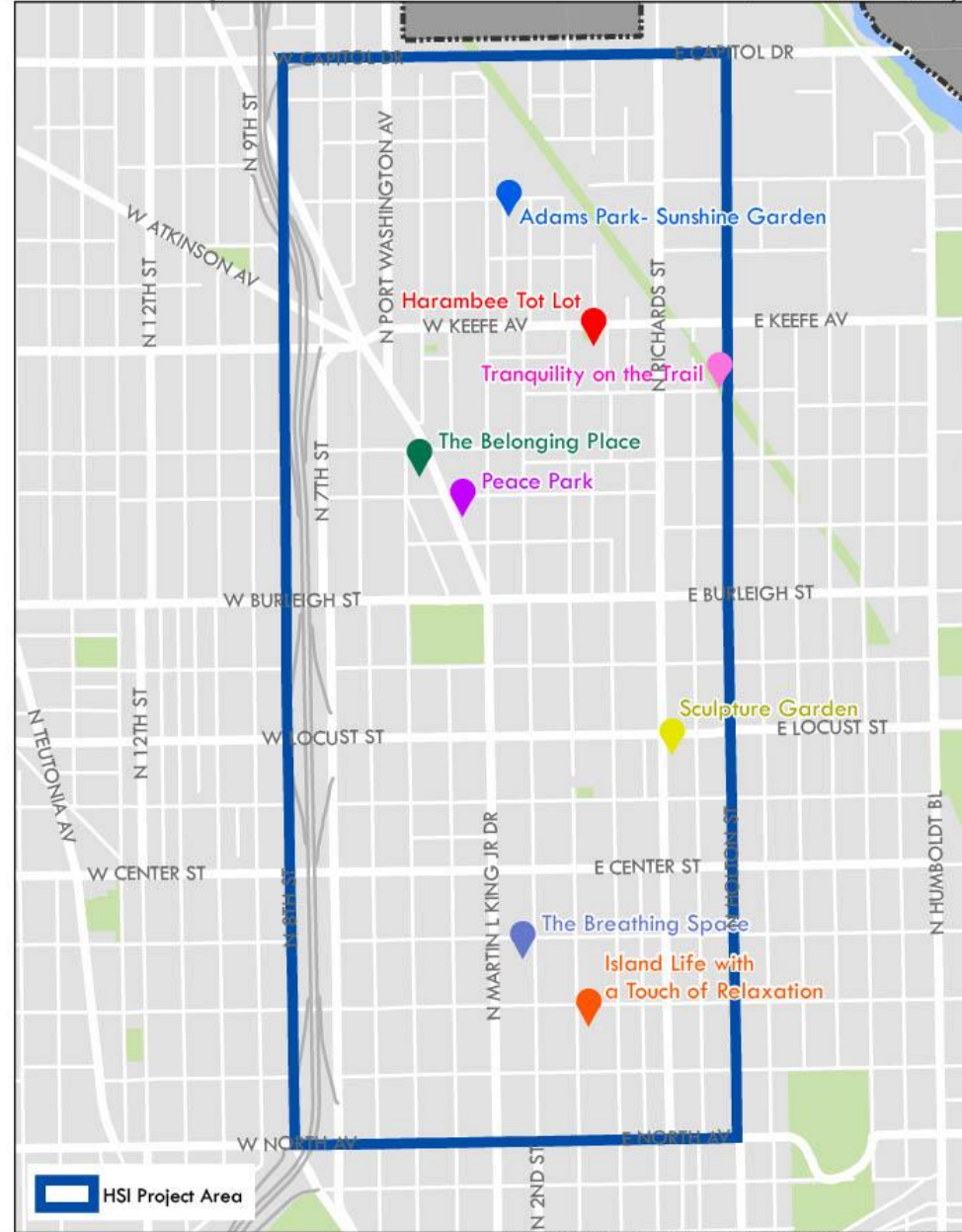
---

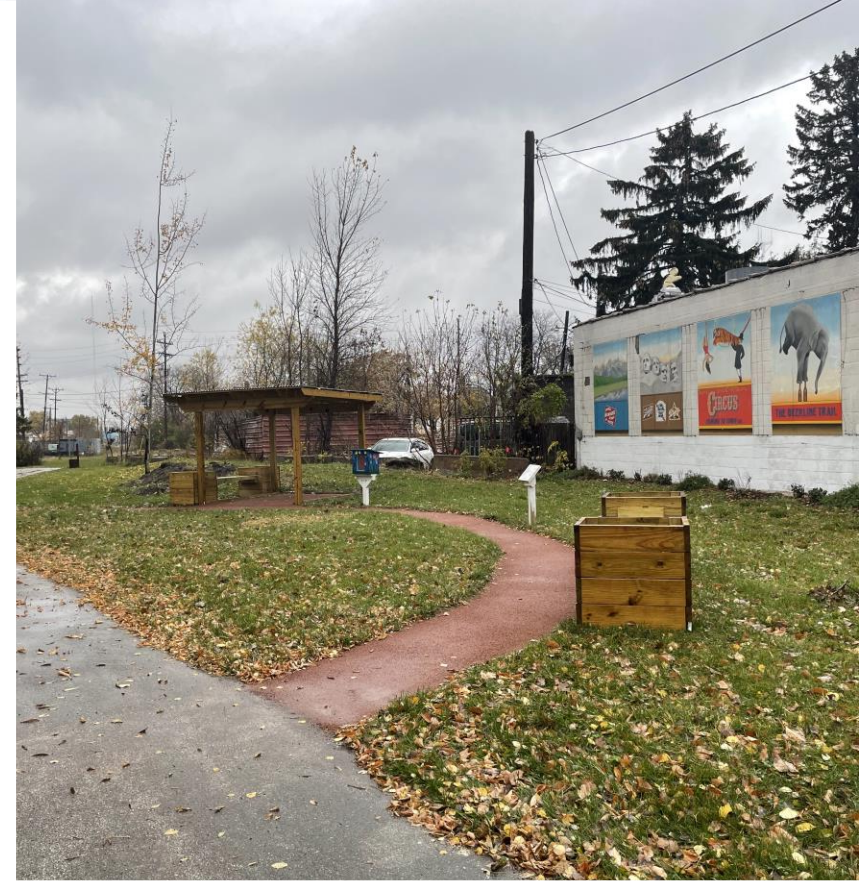
8 Healing Spaces

# HEALING SPACES INITIATIVE | 2021

## Harambee Neighborhood

Prepared by the Department of City Development Planning Division, 2/1/2022  
Source: DCD Planning Division, City of Milwaukee Information Technology Management Division





# Completed Projects



# 2022 Key Metrics

Measure	Goal
New HSI Projects	5 – 7
Continued maintenance on new and existing projects	+8
Attendees at events	~15
Environmental quality	Positive change in amenities, greenspace and maintenance of existing amenities
Space Activation Events	5