

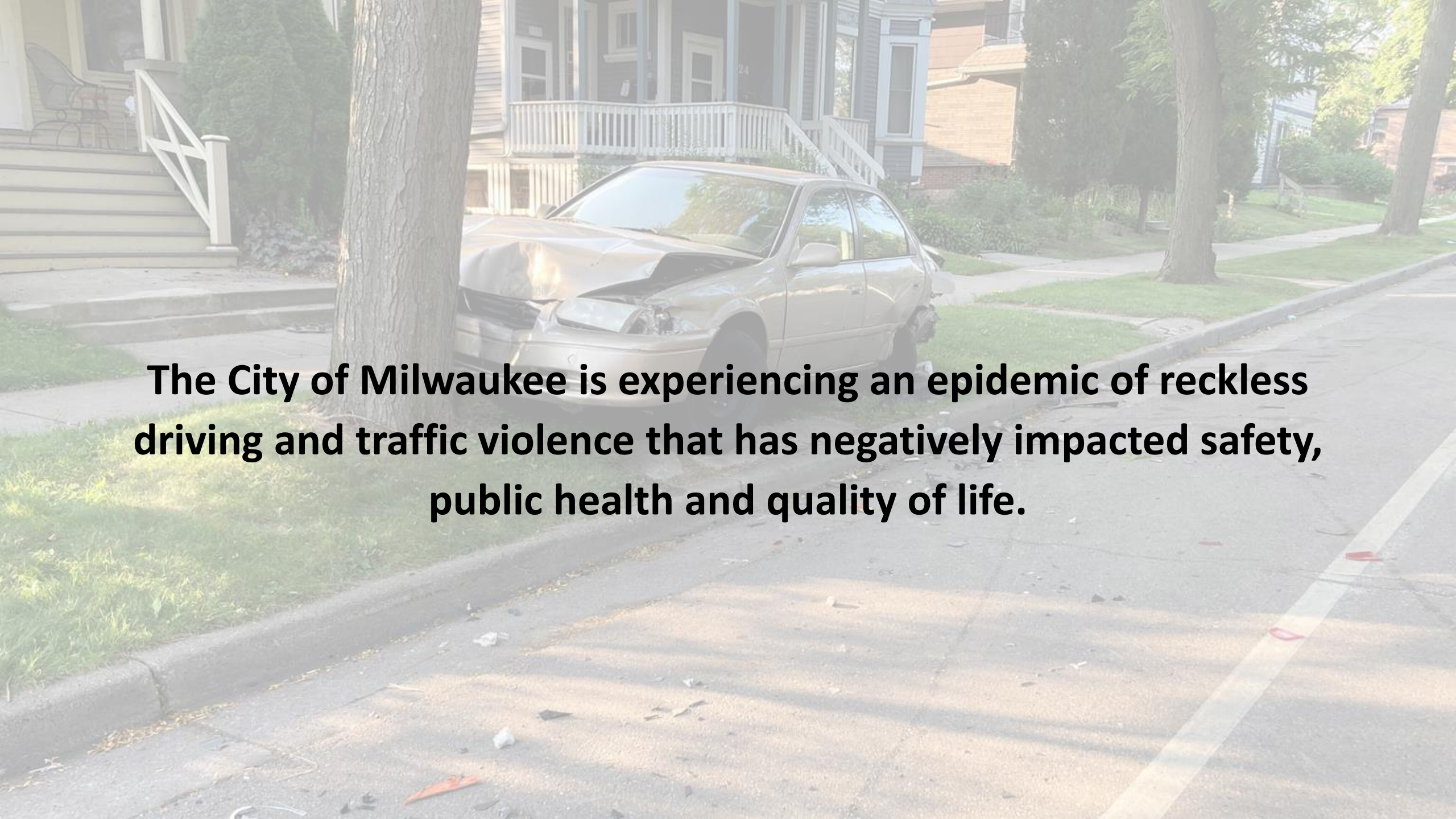
City of Milwaukee Crash Analysis Report



TOOLE
DESIGN



*Full report available at:
Milwaukee.gov/Crash_Report*



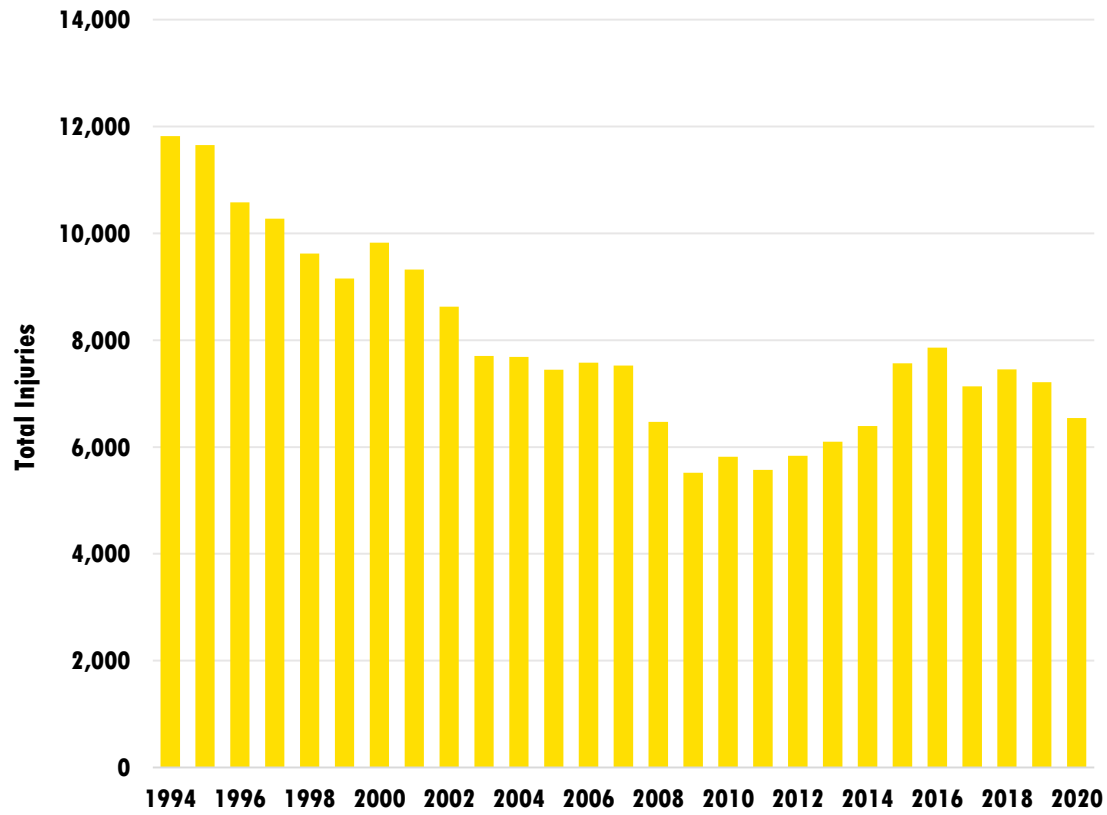
The City of Milwaukee is experiencing an epidemic of reckless driving and traffic violence that has negatively impacted safety, public health and quality of life.



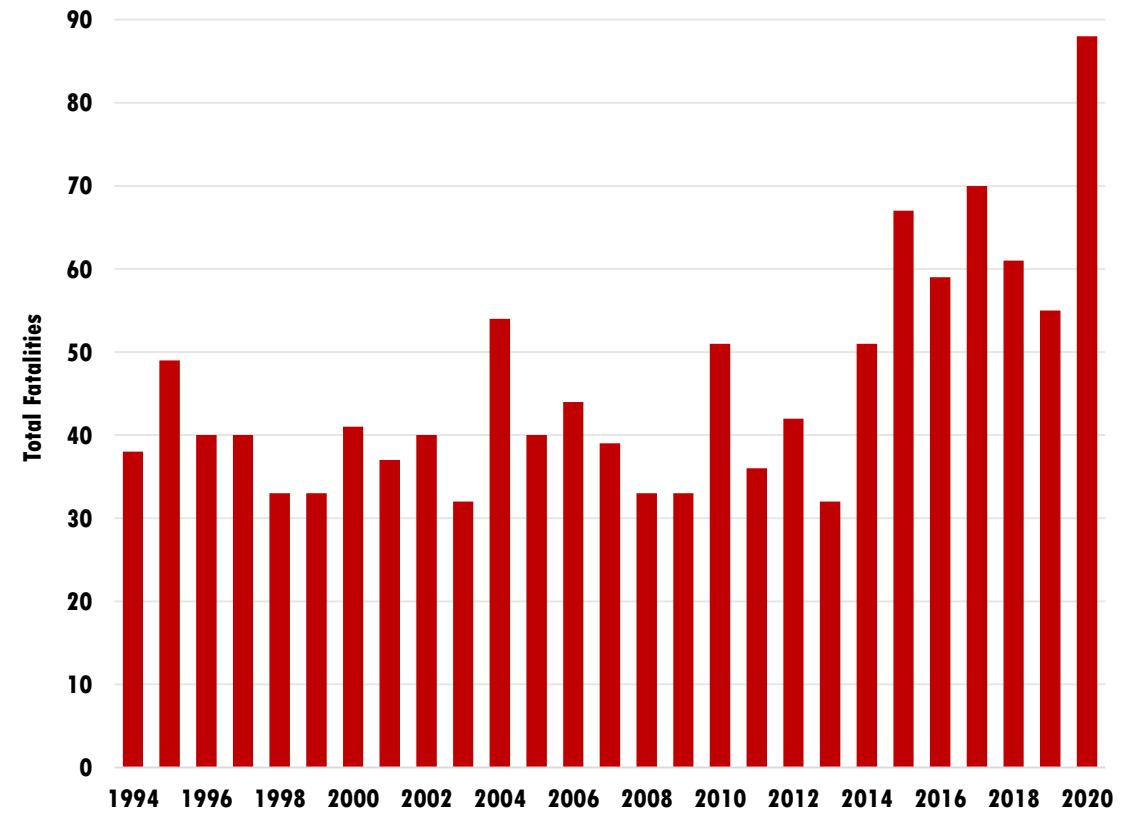
Key Takeaways

Injuries are going down. Fatalities are going up.

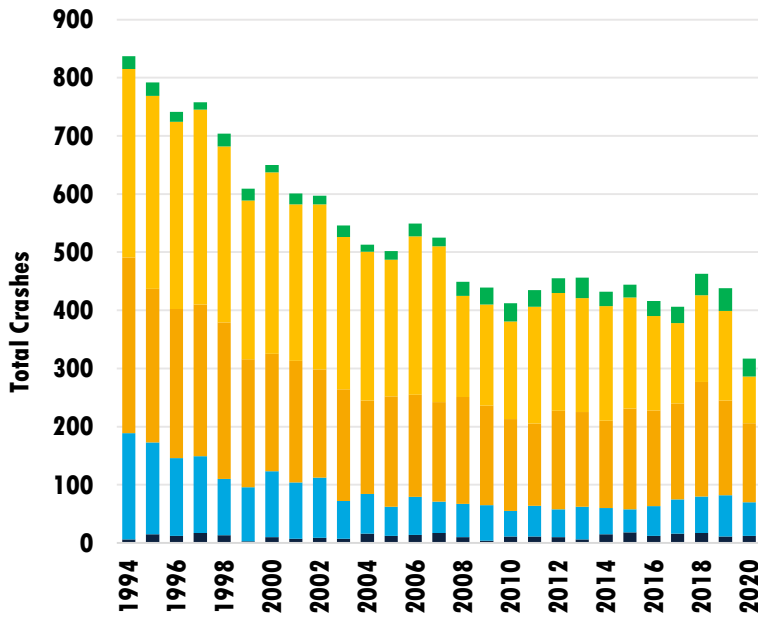
Injuries from All Reported Crashes



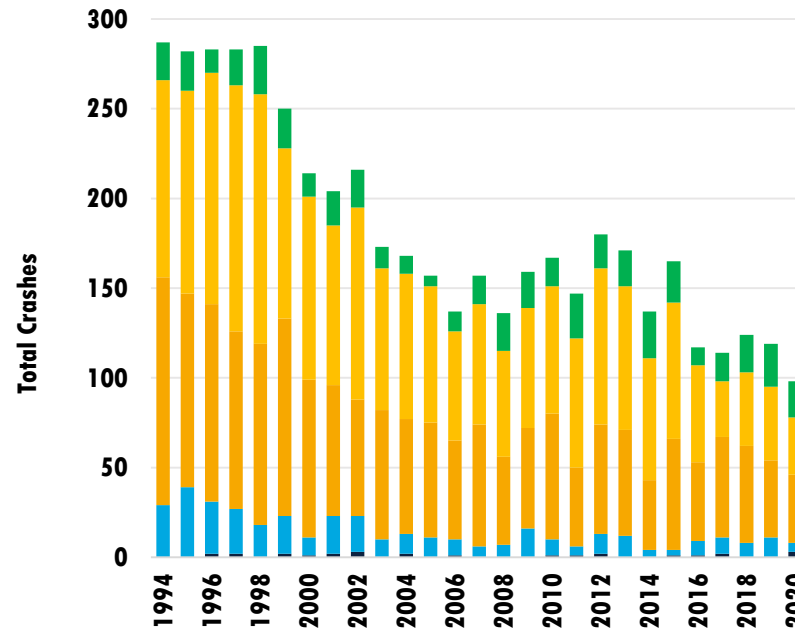
Fatalities from All Reported Crashes



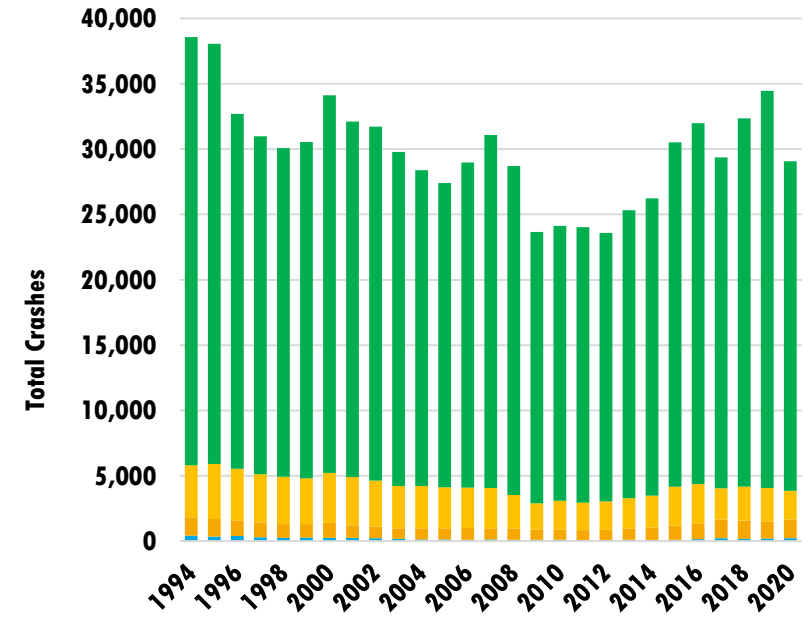
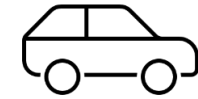
Vulnerable street users are disproportionately likely to be killed or seriously injured



- Fatal
- Severe Injury
- Minor Injury
- Possible Injury
- Property Damage Only

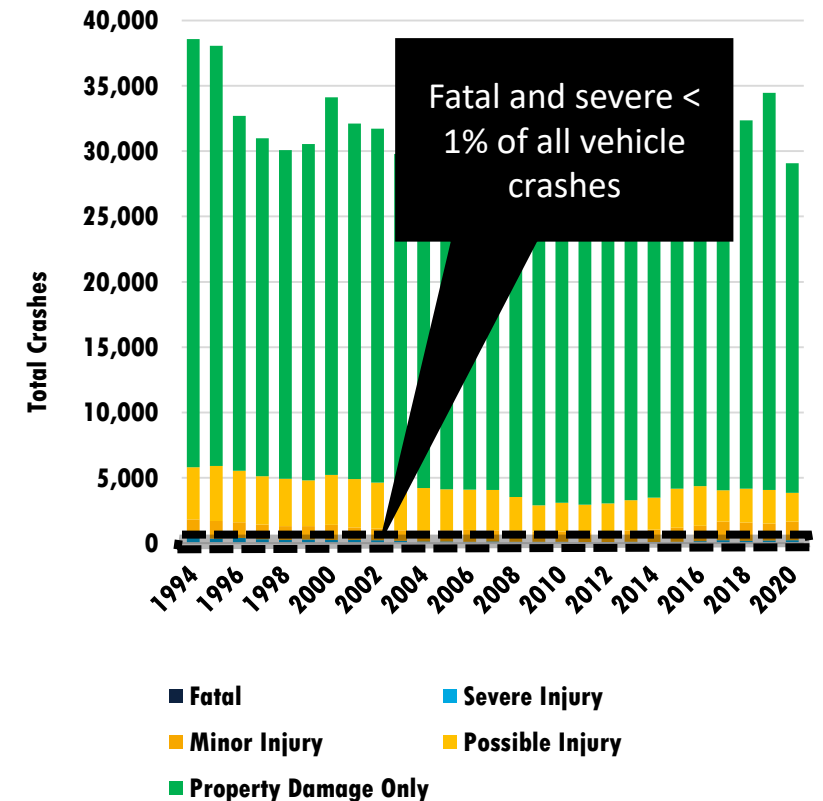
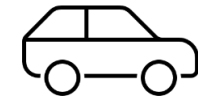
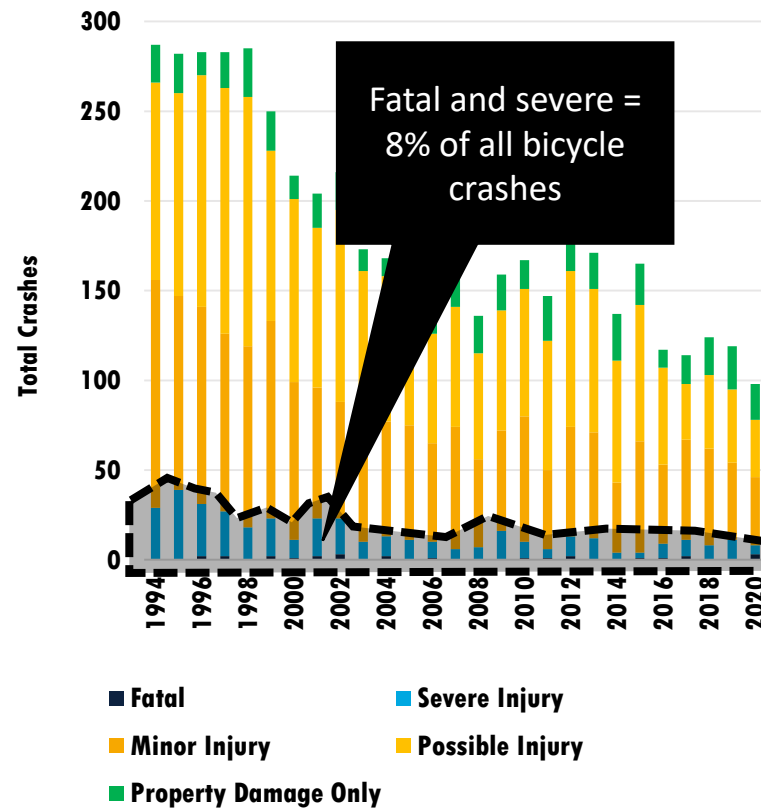
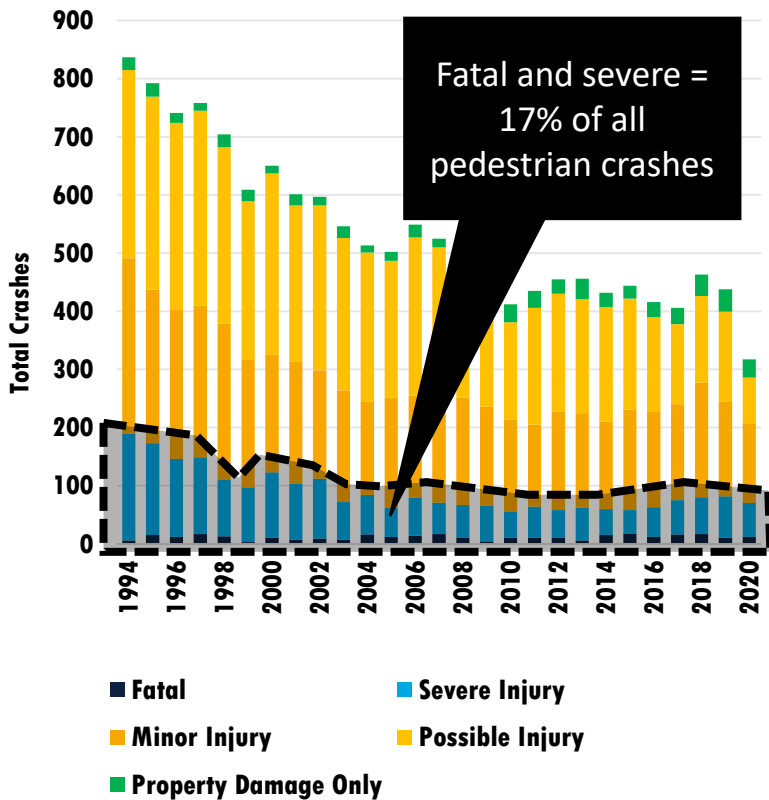


- Fatal
- Severe Injury
- Minor Injury
- Possible Injury
- Property Damage Only

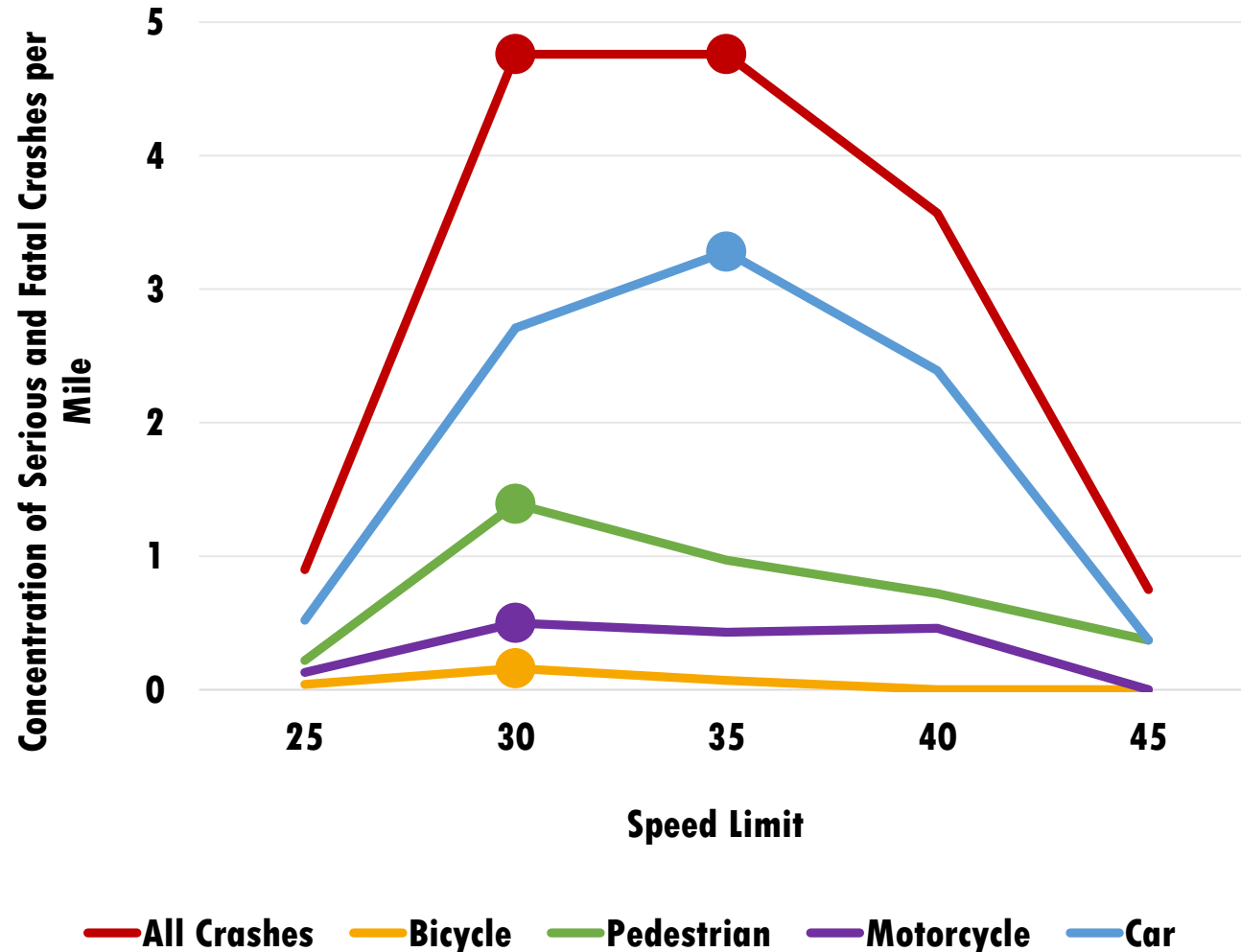


- Fatal
- Severe Injury
- Minor Injury
- Possible Injury
- Property Damage Only

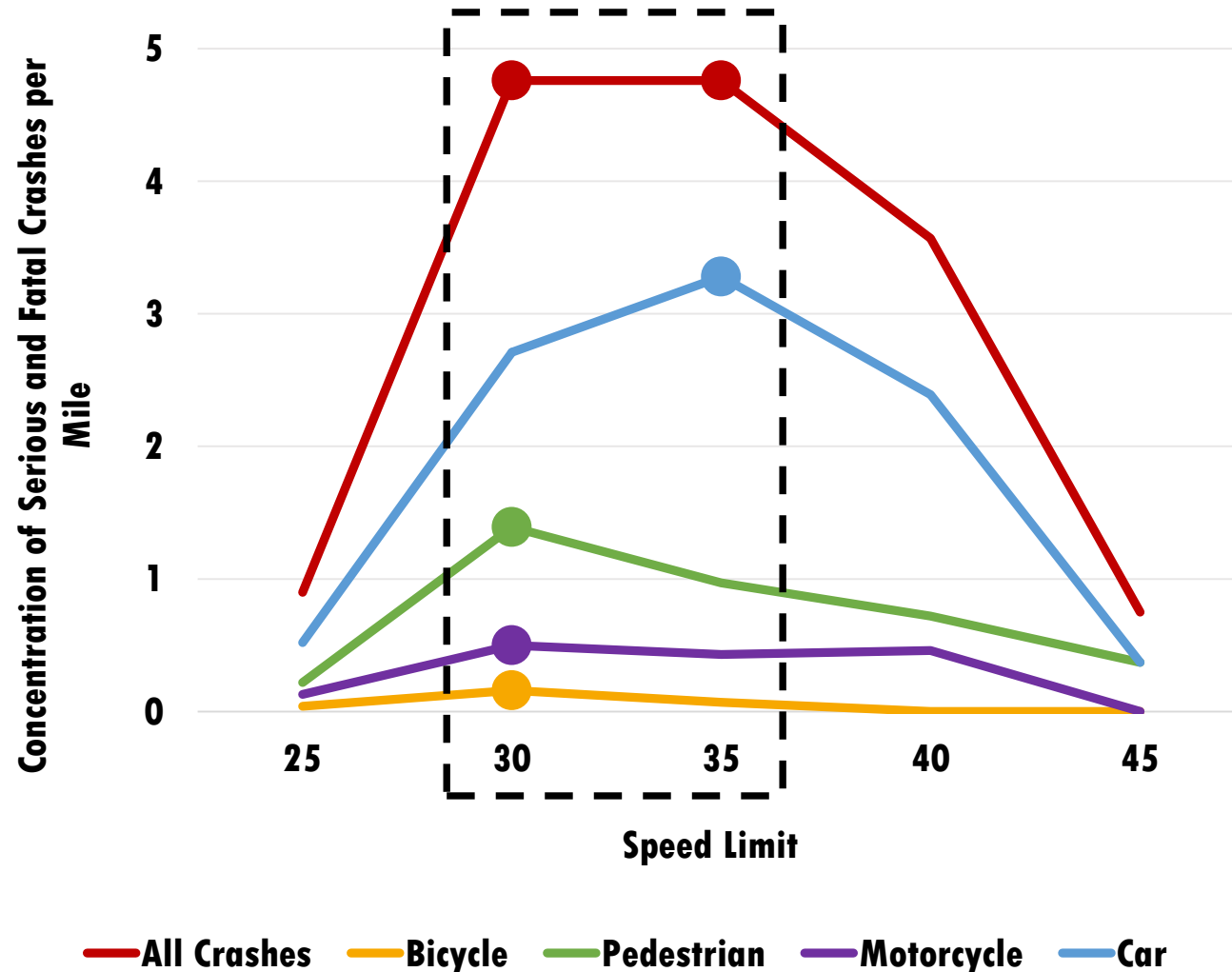
Vulnerable street users are disproportionately likely to be killed or seriously injured



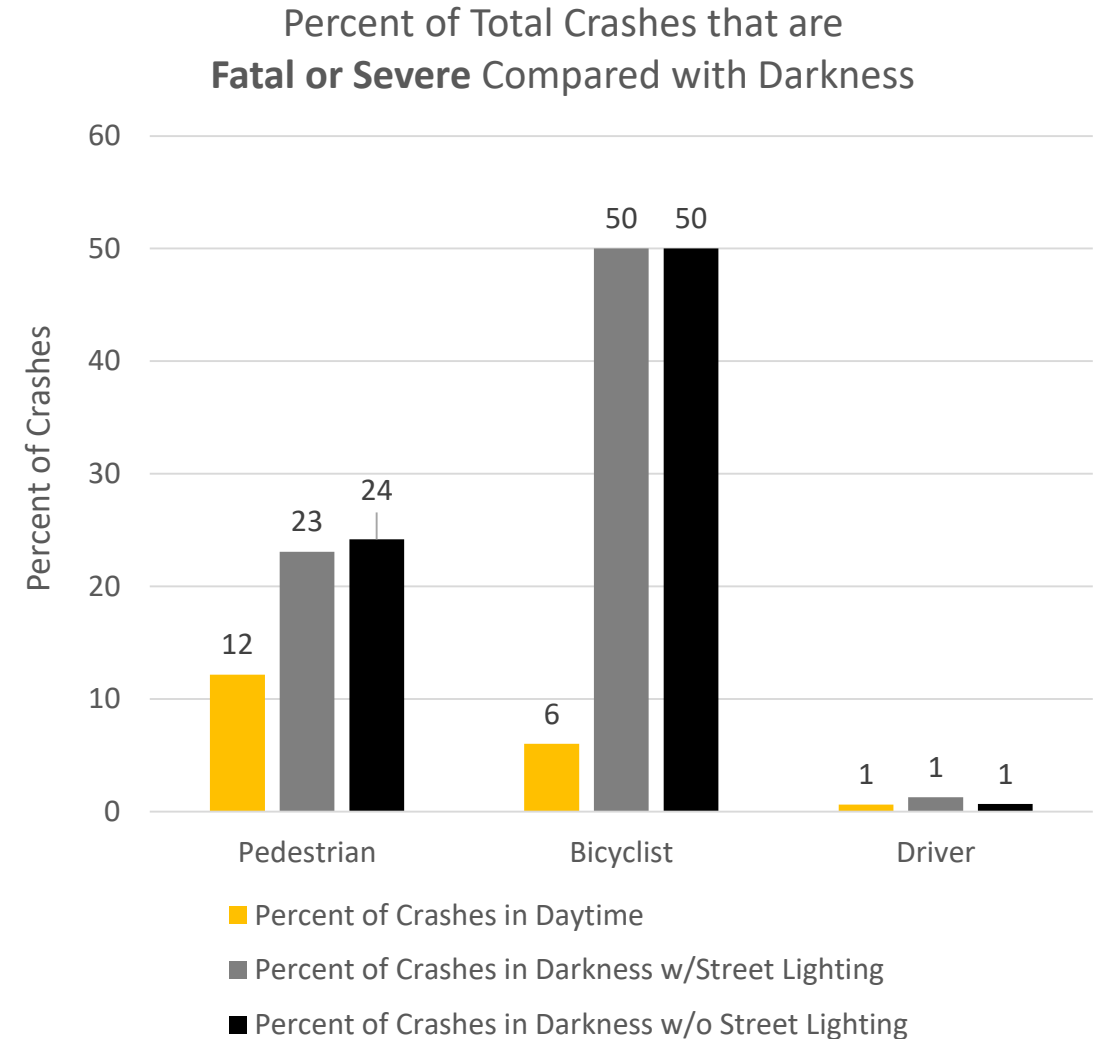
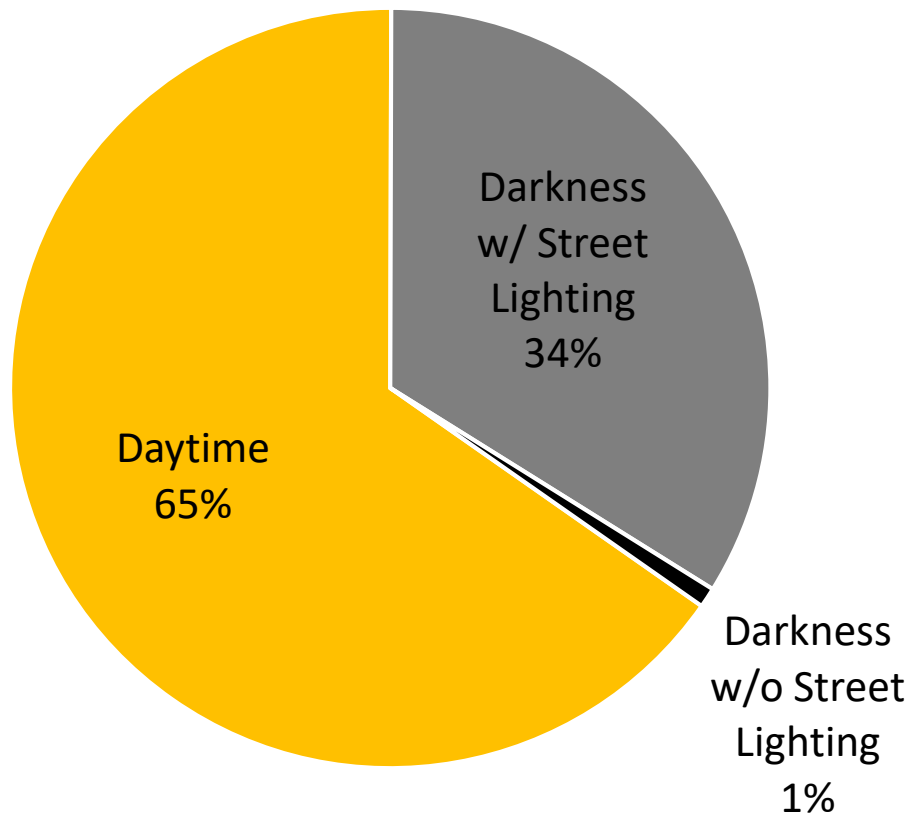
Streets with speed limits of 30 to 35 mph are dangerous for all street users



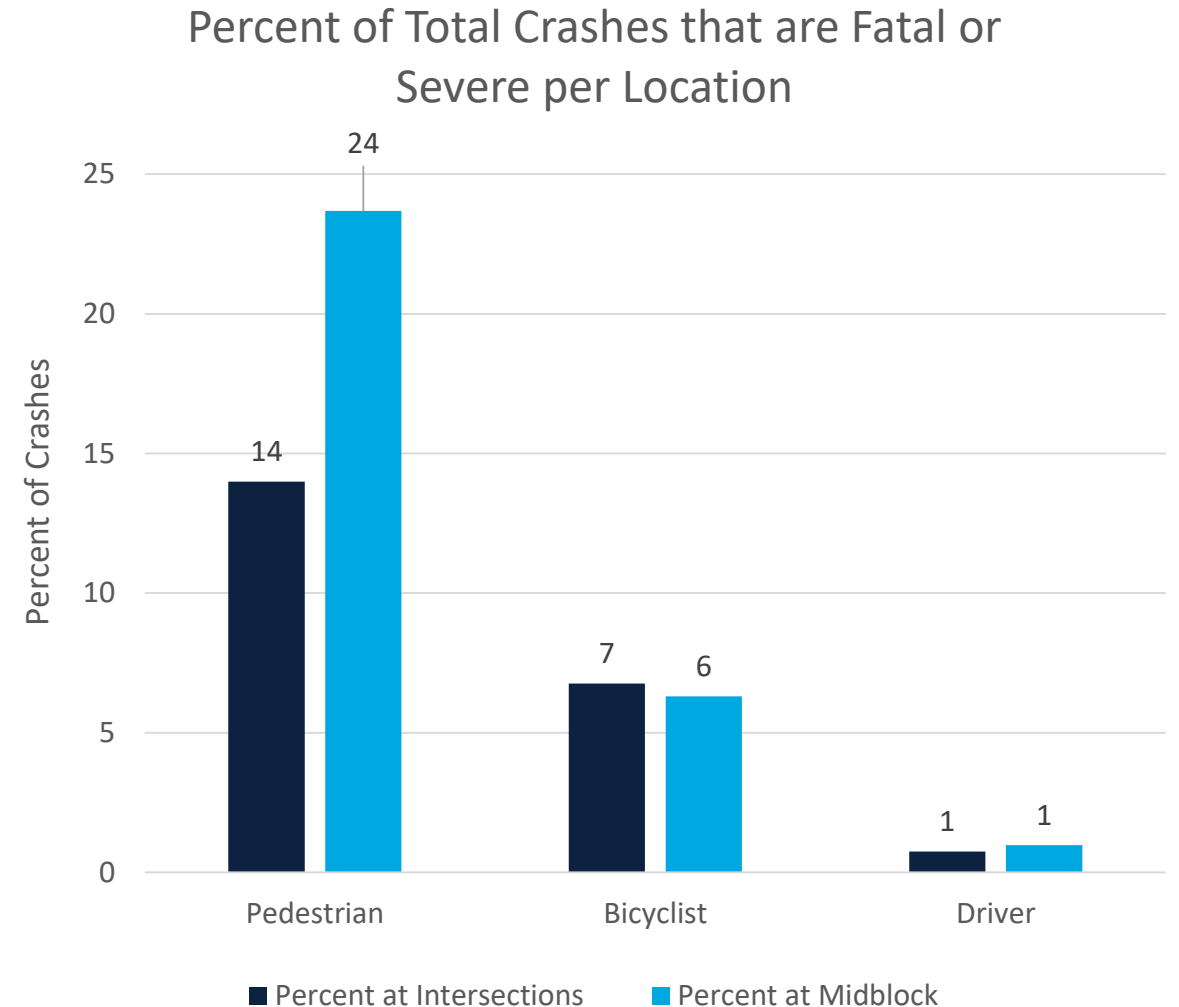
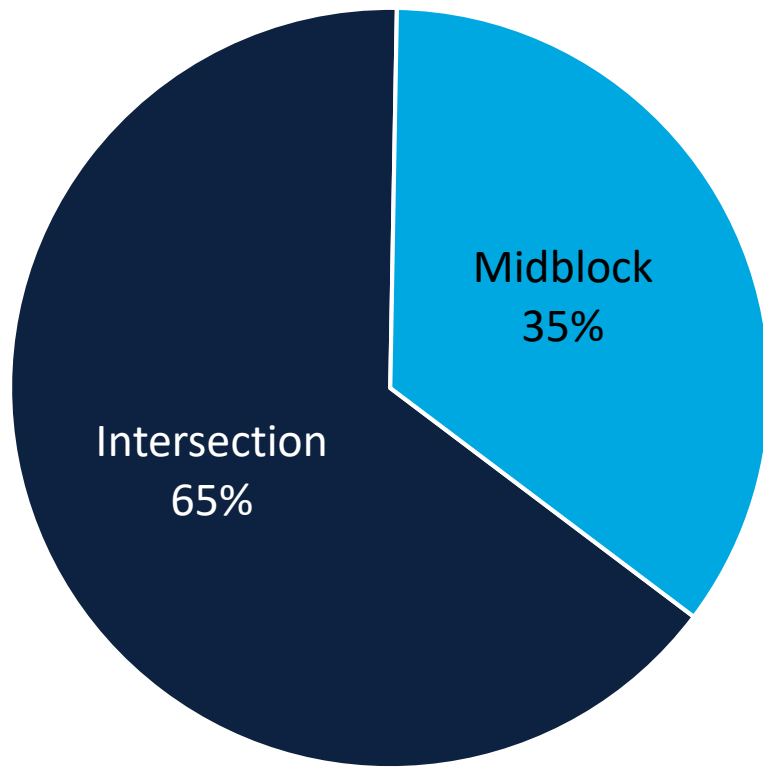
Streets with speed limits of 30 to 35 mph are dangerous for all street users



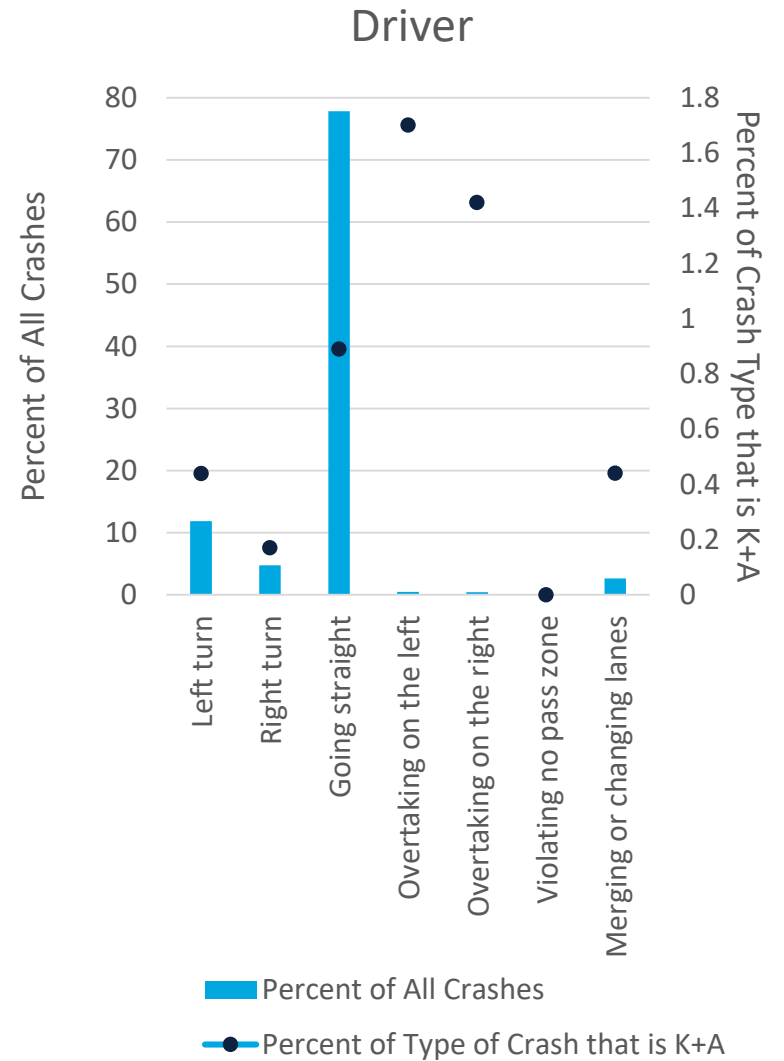
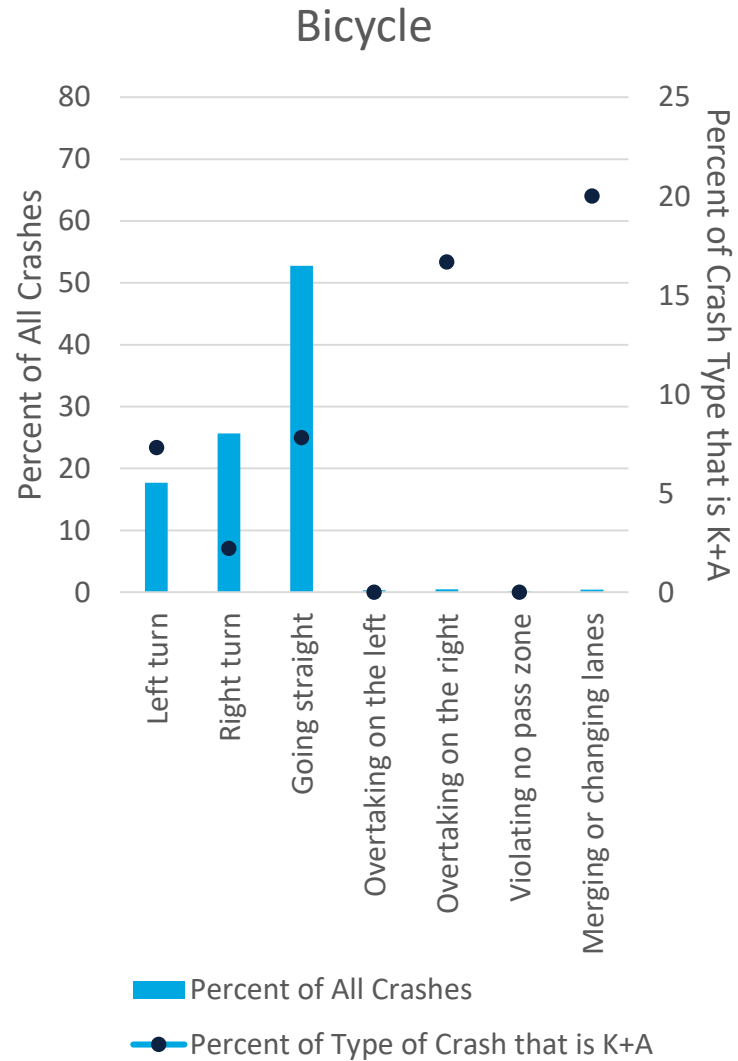
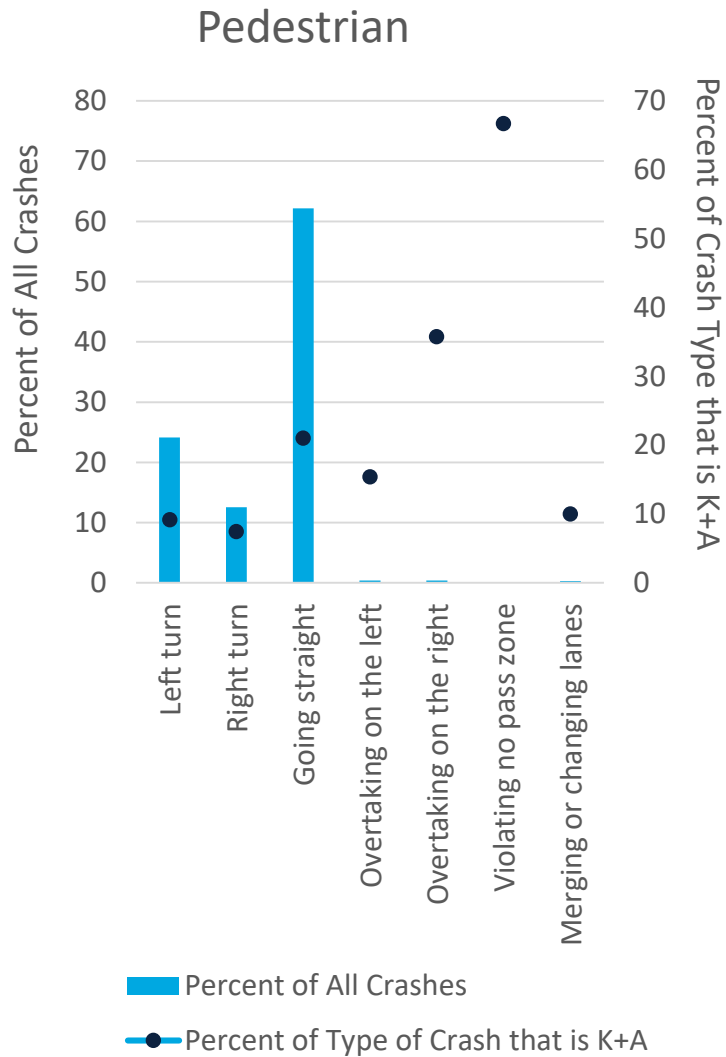
Pedestrian and bicyclist crashes in dark and low light conditions are especially severe



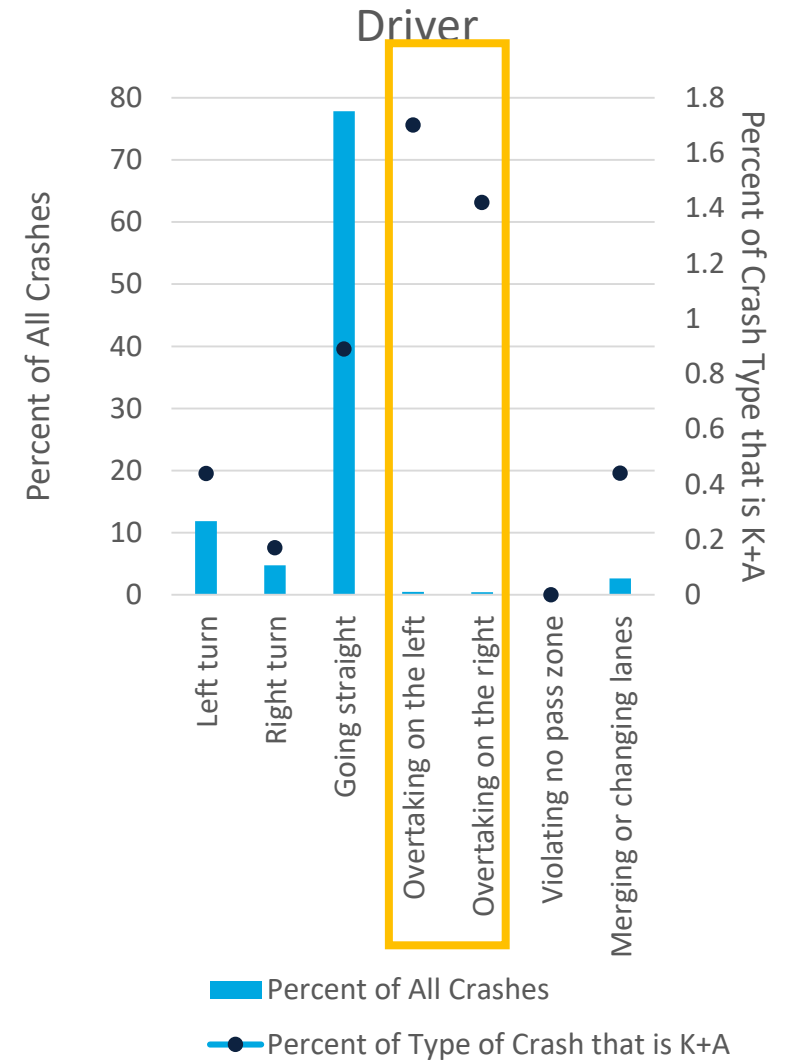
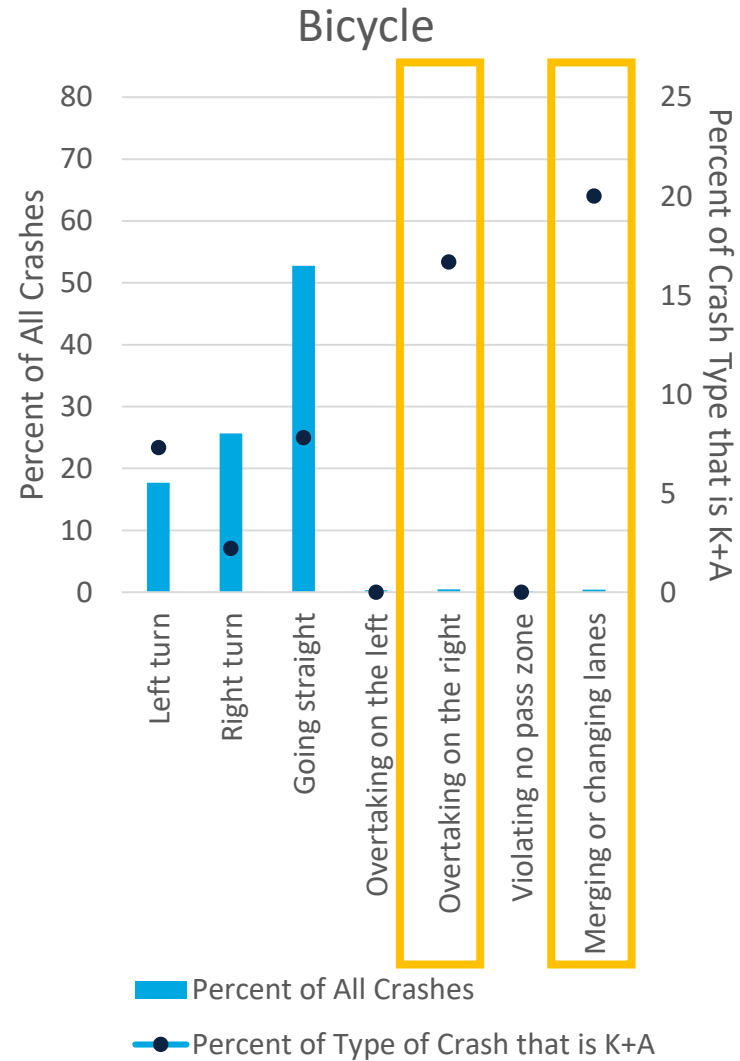
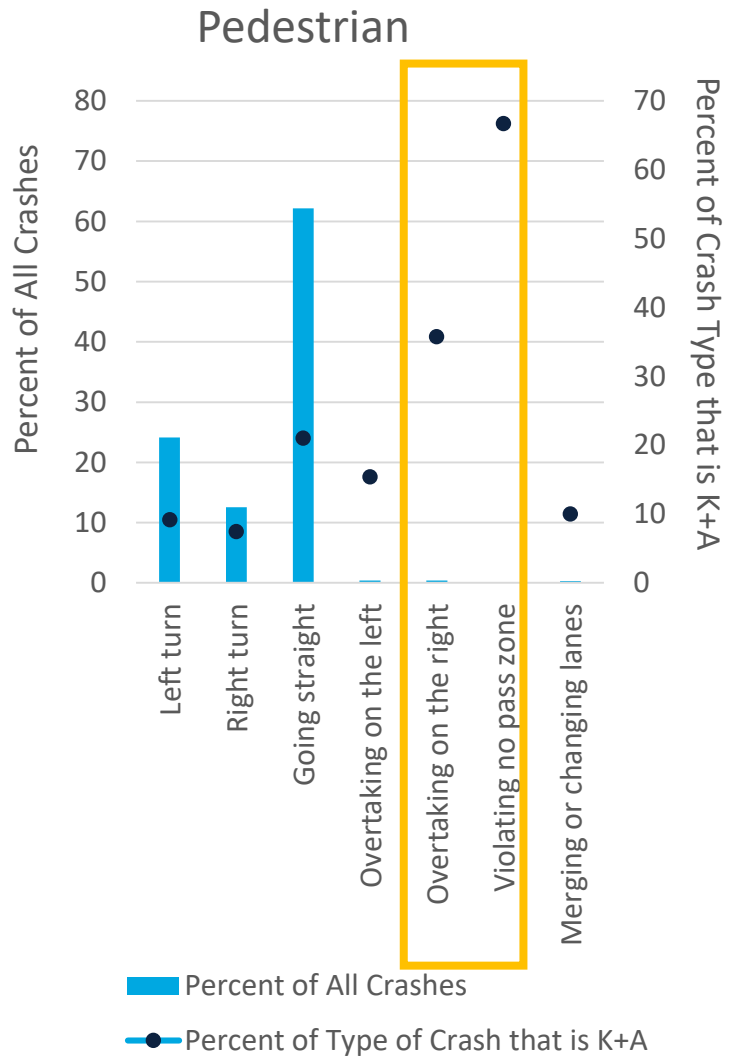
More crashes happen at intersections, but they are more likely to be severe midblock



Crashes by Driver Action

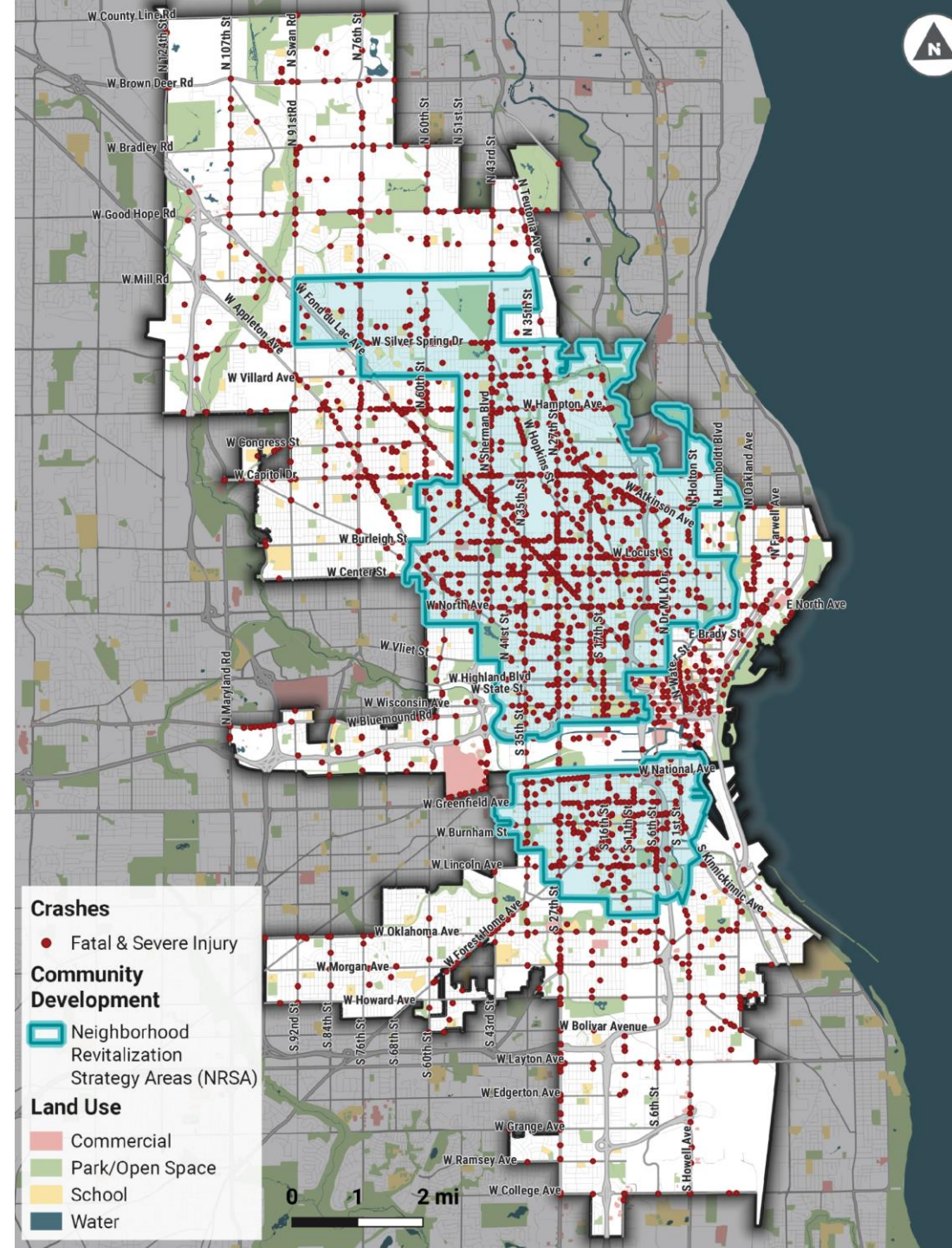


Crashes by Driver Action



Crashes in NRSAs

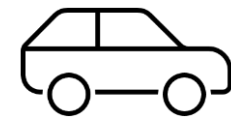
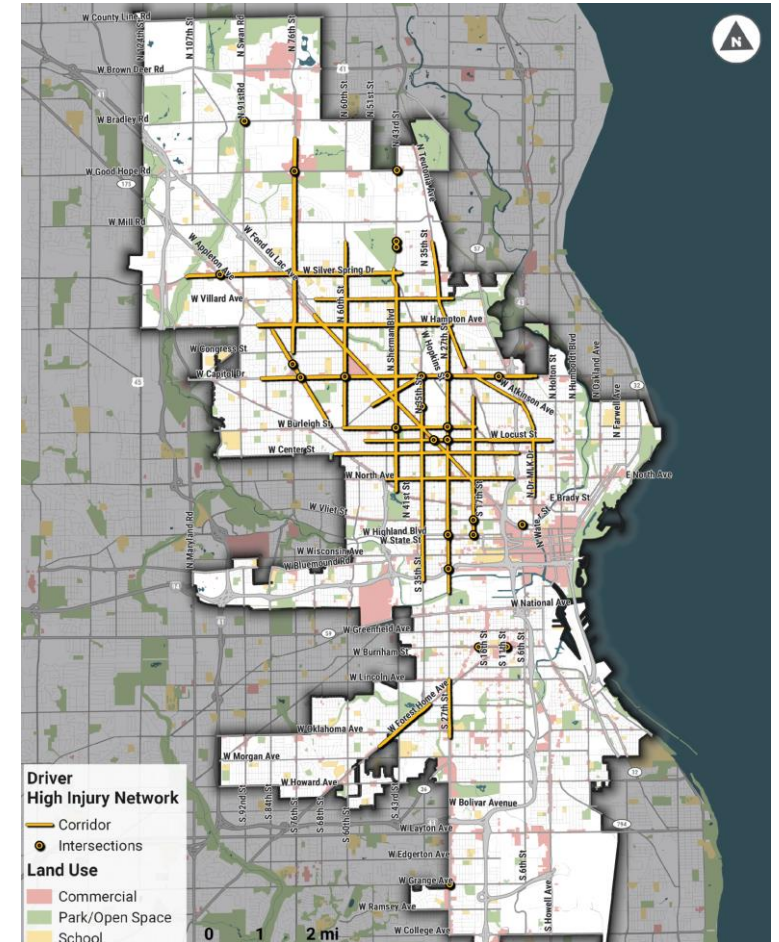
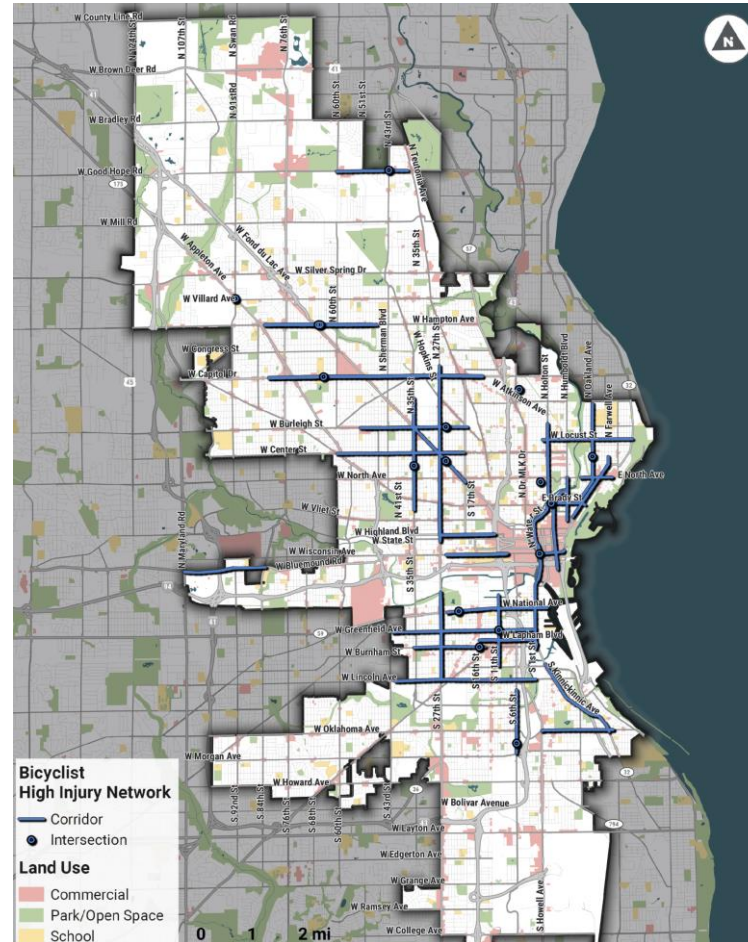
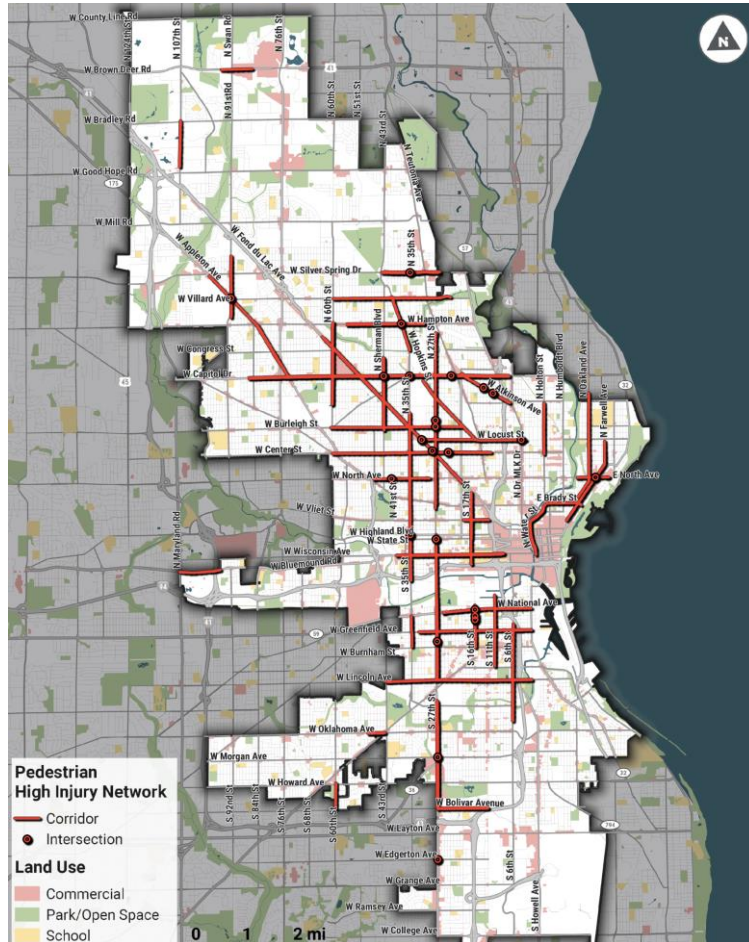
- Streets are more likely to be:
 - 30-35 mph streets
 - Higher traffic volumes
- More likely to involve:
 - Drivers overtaking on the left or right
 - Hit-and-run drivers
 - Drugs





High Injury Network

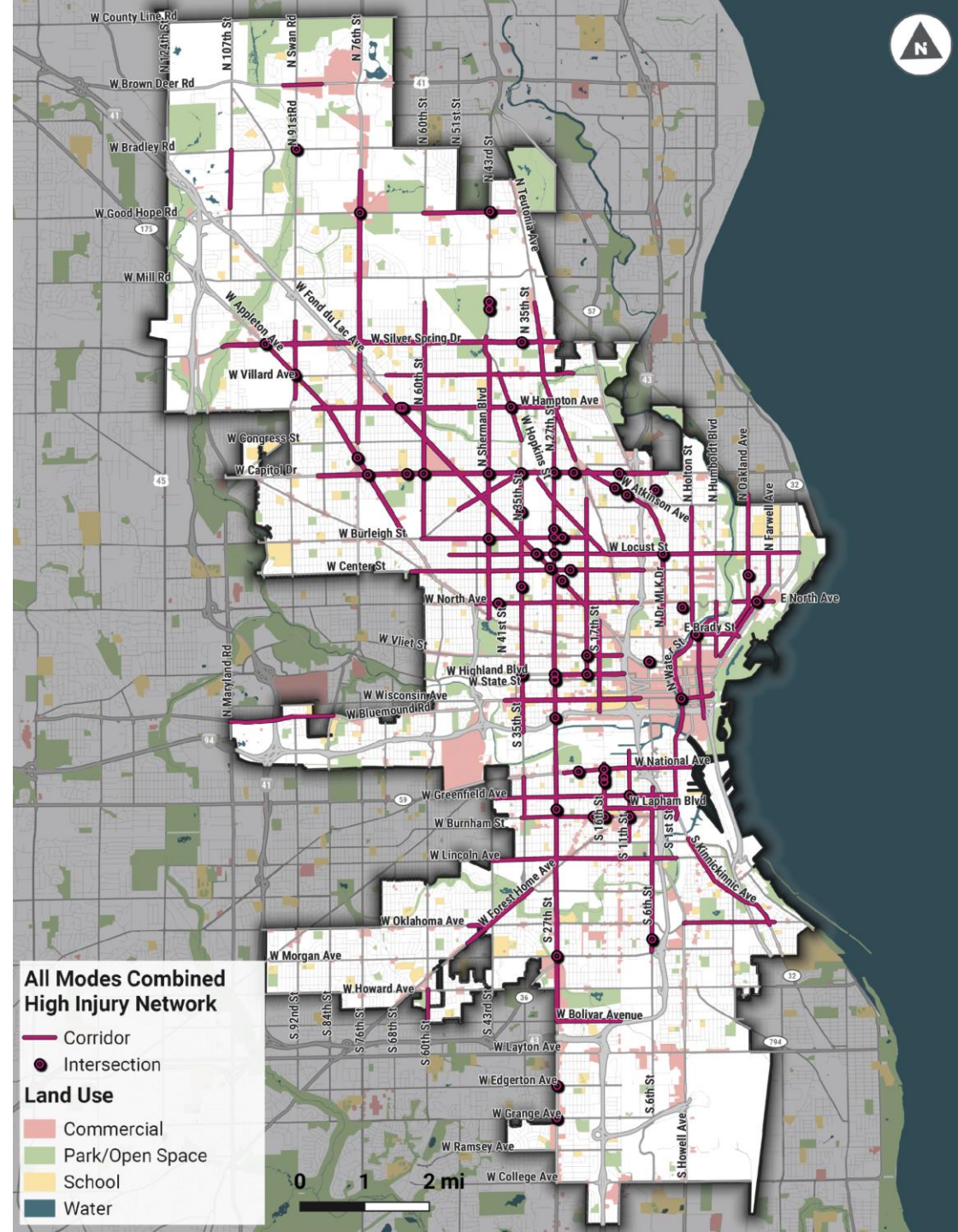
Modal HINs



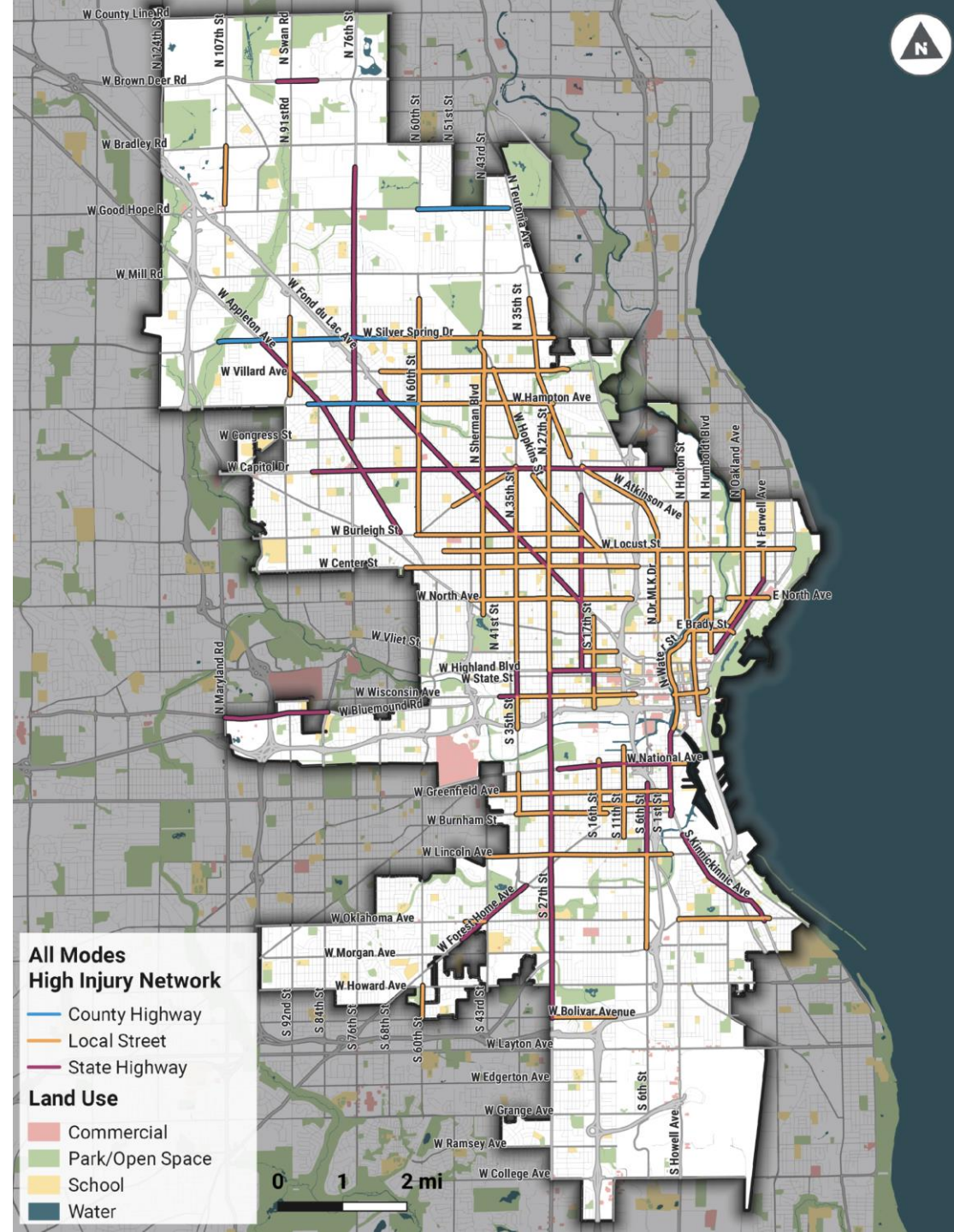
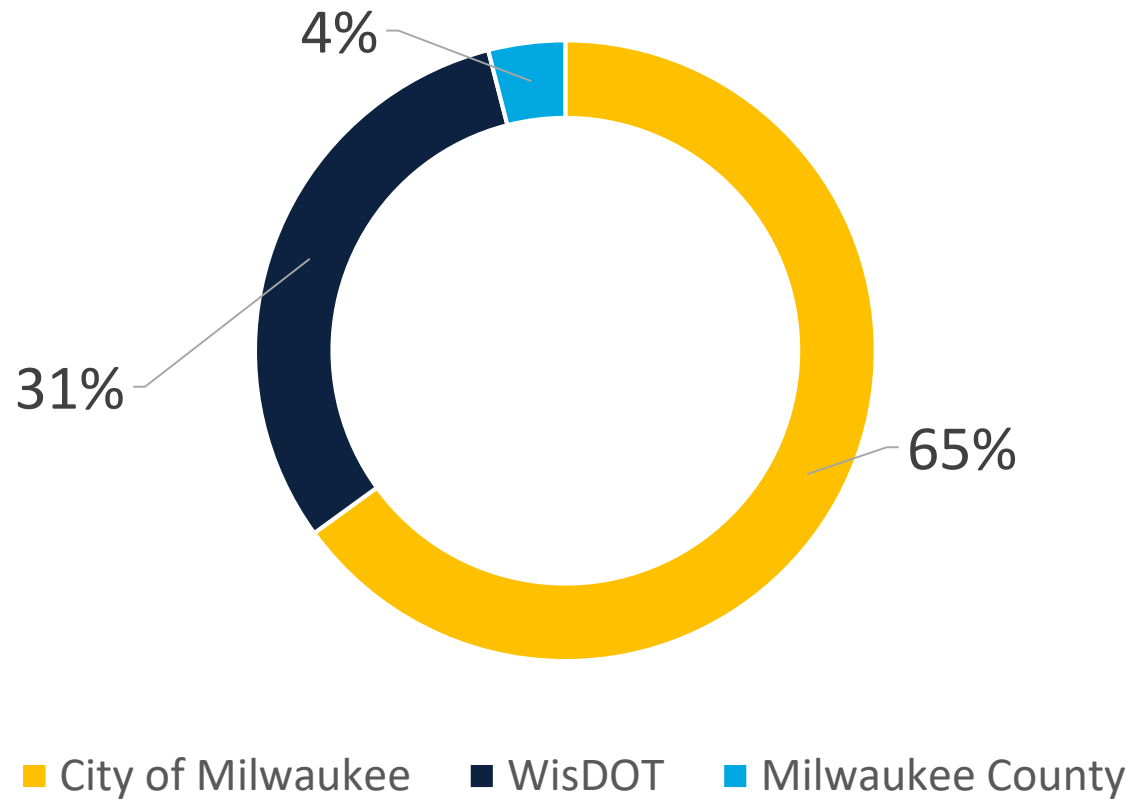
All Modes HIN

Project Prioritization Model – Top Priority Streets & Intersections

- **Fond Du Lac Avenue** from Armitage Ave to 20th St
- **Capitol Drive** from 85th St to 6th St
- **Hampton Avenue** from Appleton Ave to 31st St
- **35th Street** from Canal St to Nash St
- **Wisconsin Avenue** from 25th St to 9th St
- **Center Street** from Lisbon Ave to 11th Ln
- **National Avenue** from 25th St to 1st St
- **Dr Martin Luther King Jr Dr & Locust St**
- **27th Street** from Euclid Ave to Cornell St
- **Burleigh Street** from 60th St to Hopkins St



HIN Jurisdiction



How can we use the HIN?

- Project prioritization
- Grant funding
- Project types

Project Prioritization Model

Indicator	Criteria	Weight
Use	Volumes; Population Density	10
Equity	NRSAs; Race; vehicle availability; persons with a disability; environmental justice	20
Safety	High Injury Network; crash risk; injury crashes; fatal crashes	20
Condition (when applicable)	PQI; 286-CITY	50

How can we use the research?

- Design for most dangerous behaviors
- Prioritize areas of the City most affected by crashes
- Marketing and communications





Questions?

**Full report available at:
[Milwaukee.gov/Crash_Report](https://milwaukee.gov/Crash_Report)**