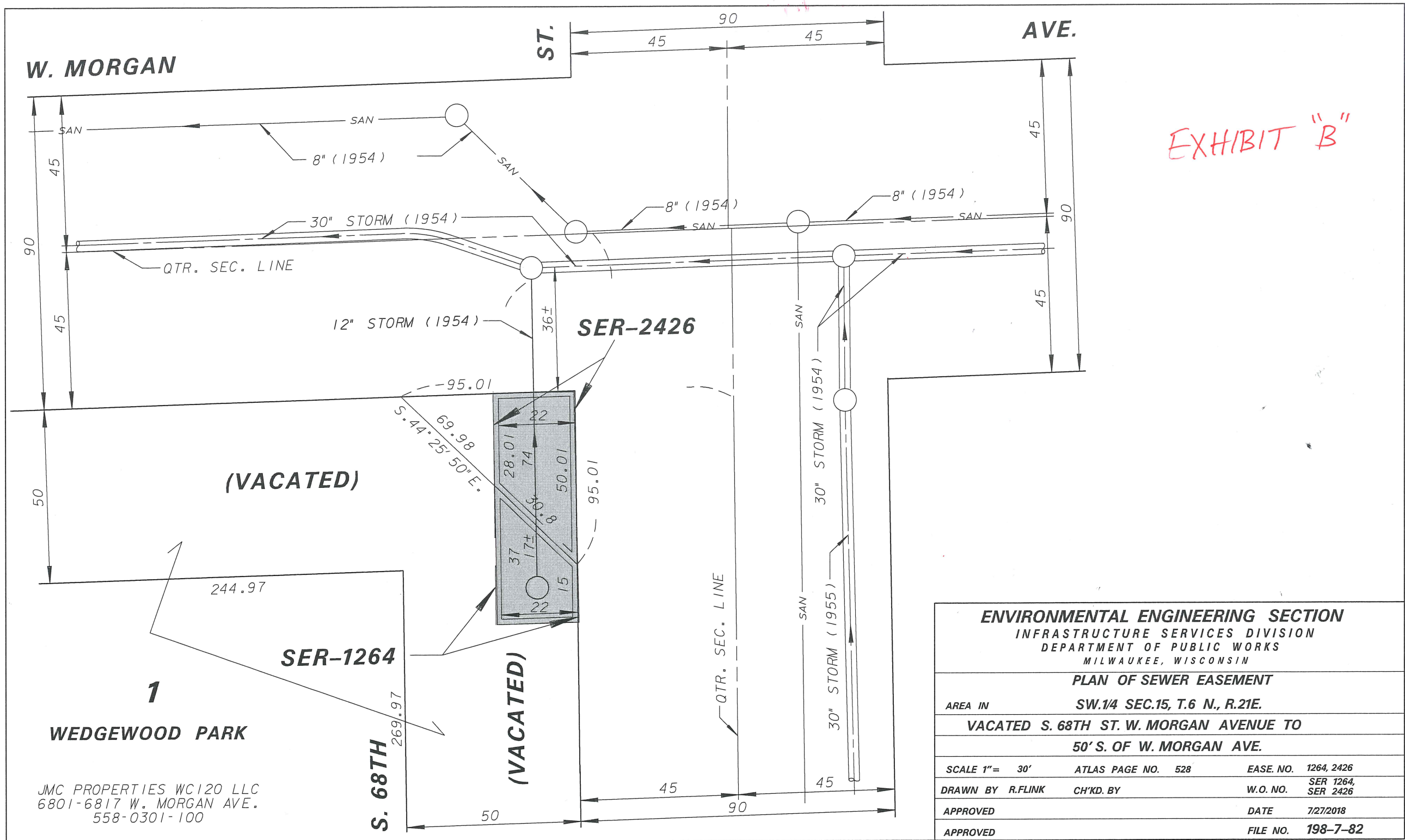


EXHIBIT "B"



<b>ENVIRONMENTAL ENGINEERING SECTION</b>		
INFRASTRUCTURE SERVICES DIVISION		
DEPARTMENT OF PUBLIC WORKS		
MILWAUKEE, WISCONSIN		
<b>PLAN OF SEWER EASEMENT</b>		
AREA IN	SW.1/4 SEC.15, T.6 N., R.21E.	
<b>VACATED S. 68TH ST. W. MORGAN AVENUE TO</b>		
<b>50' S. OF W. MORGAN AVE.</b>		
SCALE 1" = 30'	ATLAS PAGE NO. 528	EASE. NO. 1264, 2426
DRAWN BY R.FLINK	CH'KD. BY	W.O. NO. SER 1264, SER 2426
APPROVED		DATE 7/27/2018
APPROVED		FILE NO. 198-7-82

JMC PROPERTIES WC120 LLC  
6801-6817 W. MORGAN AVE.  
558-0301-100

S. 68TH

1

WEDGEWOOD PARK

SER-1264

SER-2426

W. MORGAN

ST.

AVE.

(VACATED)

(VACATED)

QTR. SEC. LINE

QTR. SEC. LINE

30" STORM (1954)

30" STORM (1955)

12" STORM (1954)

8" (1954)

8" (1954)

8" (1954)

45

90

45

50

244.97

269.97

50

45

90

45

45

90

45

90

45

45

95.01  
69.98  
5.44  
25' 50" E.

28.01  
7.4  
50.01

37  
17±  
22

95.01

36±

SAN

SAN

SAN

SAN

SAN

SAN

SAN

SAN

SAN

SAN

SAN

SAN

SAN

SAN

SAN

SAN

SAN

SAN