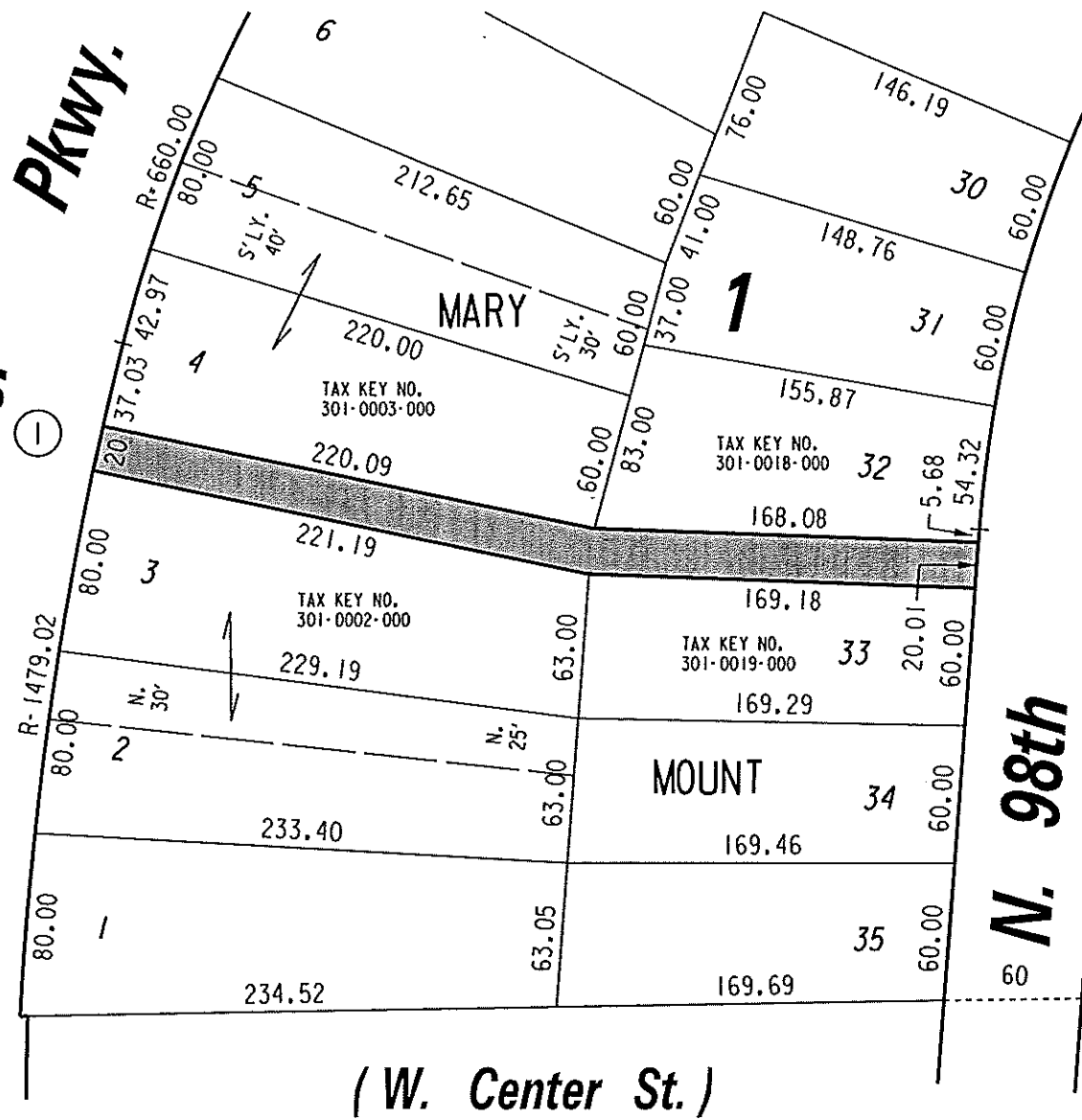


N. Menomonee River
(80' R.O.W.)



N.E. 1/4 SEC. 17, T.7N., R.21E.

301

①
 R= 1479.02'
 A= 20.00'
 C= 20.00'
 I < = 00° 46' 29"
 D < = 00° 23' 14.5"
 C.B. = N. 12° 08' 32" E

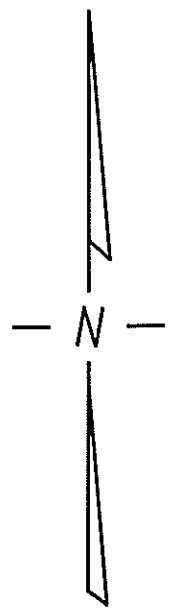


EXHIBIT "A"
 FILE NO. 110871

INFRASTRUCTURE SERVICES DIVISION
 MILWAUKEE, WISCONSIN

ASSIGNED TO: W.E. FUCHS
 DRAWN BY: W.E.F.
 PROJECT/GRANT NO.: WK52337306
 APPROVED BY:

CH'K'D. BY: W.E. FUCHS
 DATE: JUNE 21, 2012
 SCALE: 1" = 80'

UNIMPROVED PUBLIC PEDESTRIAN WAY PROPOSED TO BE VACATED

5TH ALDERMANIC DISTRICT
 ALD. JAMES A. BOHL, JR.

Marcia Cornell
 CENTRAL DRAFTING & RECORDS MANAGER

Clark R. Warkent
 CITY ENGINEER 6/21/12