

BEARING BASIS:
 COORDINATES AND BEARINGS ON THIS PLAN ARE OBTAINED
 FROM THE MILWAUKEE LOCAL COORDINATE SYSTEM
 US PLUMB LINE (NAD 83) IS USED
 THE HIGH ACCURACY REFERENCE NETWORK
 IS MAINTAINED BY THE MILWAUKEE
 SURVEYING DEPARTMENT

REFERENCE LINE IS THE CENTER
 OF MEDIAN AREA
 CITY STREET BOAT DEWAY
 FIELD ESTABLISHED USING EXISTING
 FIELD MEASUREMENTS OF RECORD
 AND/OR YOUR LOCATION

NO.	DATE	BY	REVISION
1	10/21/03
2	10/21/03
3	10/21/03
4	10/21/03
5	10/21/03

CITY OF MILWAUKEE

REVISION DATE: OCT. 16, 2003
 PER. 6, 2004
 SHEET 28, 2004
 SHEET 28, 2004

DATE: JAN. 21, 2003
 GRID FACTOR: 100

SCALE: FEET
 0 50 100

HWY: I-94
 COUNTY: MILWAUKEE

FEDERAL PROJECT NUMBER 2003(387)
 STATE R/W PROJECT NUMBER 1060-05-20
 CONSTRUCTION PROJECT NUMBER 1060-05-73

PLAT SHEET NO: 4.14
 PS&E SHEET NO: E

WISCONSIN CADDS SHEET 79

DATE: JAN. 21, 2003
 REVISION DATE: OCT. 16, 2003
 PER. 6, 2004
 SHEET 28, 2004
 SHEET 28, 2004

SCALE: FEET
 0 50 100

HWY: I-94
 COUNTY: MILWAUKEE

FEDERAL PROJECT NUMBER 2003(387)
 STATE R/W PROJECT NUMBER 1060-05-20
 CONSTRUCTION PROJECT NUMBER 1060-05-73

PLAT SHEET NO: 4.14
 PS&E SHEET NO: E

WISCONSIN CADDS SHEET 79

DATE: JAN. 21, 2003
 REVISION DATE: OCT. 16, 2003
 PER. 6, 2004
 SHEET 28, 2004
 SHEET 28, 2004

SCALE: FEET
 0 50 100

HWY: I-94
 COUNTY: MILWAUKEE

FEDERAL PROJECT NUMBER 2003(387)
 STATE R/W PROJECT NUMBER 1060-05-20
 CONSTRUCTION PROJECT NUMBER 1060-05-73

PLAT SHEET NO: 4.14
 PS&E SHEET NO: E

WISCONSIN CADDS SHEET 79

DATE: JAN. 21, 2003
 REVISION DATE: OCT. 16, 2003
 PER. 6, 2004
 SHEET 28, 2004
 SHEET 28, 2004

SCALE: FEET
 0 50 100

HWY: I-94
 COUNTY: MILWAUKEE

FEDERAL PROJECT NUMBER 2003(387)
 STATE R/W PROJECT NUMBER 1060-05-20
 CONSTRUCTION PROJECT NUMBER 1060-05-73

PLAT SHEET NO: 4.14
 PS&E SHEET NO: E

WISCONSIN CADDS SHEET 79

DATE: JAN. 21, 2003
 REVISION DATE: OCT. 16, 2003
 PER. 6, 2004
 SHEET 28, 2004
 SHEET 28, 2004

SCALE: FEET
 0 50 100

HWY: I-94
 COUNTY: MILWAUKEE

FEDERAL PROJECT NUMBER 2003(387)
 STATE R/W PROJECT NUMBER 1060-05-20
 CONSTRUCTION PROJECT NUMBER 1060-05-73

PLAT SHEET NO: 4.14
 PS&E SHEET NO: E

WISCONSIN CADDS SHEET 79

DATE: JAN. 21, 2003
 REVISION DATE: OCT. 16, 2003
 PER. 6, 2004
 SHEET 28, 2004
 SHEET 28, 2004

SCALE: FEET
 0 50 100

HWY: I-94
 COUNTY: MILWAUKEE

FEDERAL PROJECT NUMBER 2003(387)
 STATE R/W PROJECT NUMBER 1060-05-20
 CONSTRUCTION PROJECT NUMBER 1060-05-73

PLAT SHEET NO: 4.14
 PS&E SHEET NO: E

WISCONSIN CADDS SHEET 79

DATE: JAN. 21, 2003
 REVISION DATE: OCT. 16, 2003
 PER. 6, 2004
 SHEET 28, 2004
 SHEET 28, 2004

SCALE: FEET
 0 50 100

HWY: I-94
 COUNTY: MILWAUKEE

FEDERAL PROJECT NUMBER 2003(387)
 STATE R/W PROJECT NUMBER 1060-05-20
 CONSTRUCTION PROJECT NUMBER 1060-05-73

PLAT SHEET NO: 4.14
 PS&E SHEET NO: E

WISCONSIN CADDS SHEET 79

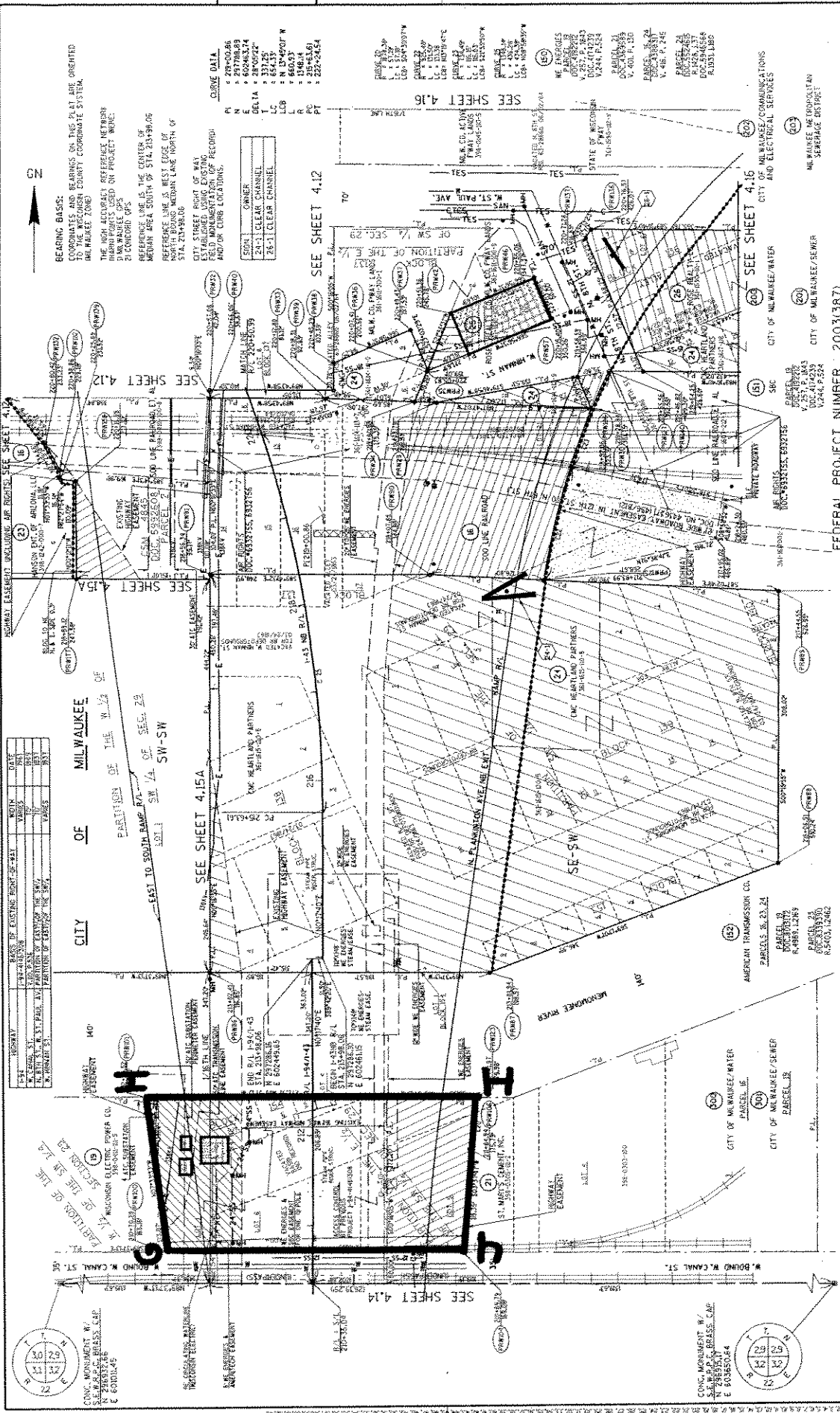
NS

BEARING BASIS:
 TO THE WISCONSIN COUNTY COORDINATE SYSTEM.
 THE HIGH ACCURACY REFERENCE NETWORK
 MARKING POINTS USED ON PROJECT WERE:
 21 CONCORD OPS
 REFERENCE LINE IS THE CENTER OF
 MEDIAN AREA SOUTH OF S14, 213-39-06
 NORTH EDWARDS MEDIAN LANE NORTH OF
 S14, 213-39-06

CORNER DATA
 N
 E
 S
 W
 DELTA
 L
 LCB
 L
 R
 R
 PT

OWNER	24-31 CLEAR CHANNEL
OWNER	76-31 CLEAR CHANNEL

SEE SHEET 4.16
 SEE SHEET 4.16
 SEE SHEET 4.16



NO.	DESCRIPTION	DATE	BY
1	PREPARED BY EXISTING POINTS	10/14/03	JK
2	ADJUSTED	10/14/03	JK
3	ADJUSTED	10/14/03	JK
4	ADJUSTED	10/14/03	JK

CITY OF MILWAUKEE
 PARTITION OF THE W. 1/4 OF
 EAST TO 200TH RAMP R/W, 1/4 OF SEC. 28
 SW-SW

SEE SHEET 4.15A

AMERICAN TRANSMISSION CO.
 PARCELS 15, 23, 24
 PARCEL 15
 N. 888 S. 120 S.
 R. 5403, 12462

CITY OF MILWAUKEE/WATER
 PARCEL 16
 CITY OF MILWAUKEE/SEWER
 PARCEL 18

REVISION DATE	OCT. 10, 2003	DATE JAN. 21, 2003	SCALE, FEET	0 50 100
DESIGNED BY	S.E.W.A.P. BRASS, C.A.P.	HWY: I-94	COUNTY: MILWAUKEE	
DRAWN BY	J. BRASS	FEDERAL PROJECT NUMBER: 2003(387)	STATE R/W PROJECT NUMBER 1060-05-20	PLAT SHEET NO: 4.15
CHECKED BY	J. BRASS	CONSTRUCTION PROJECT NUMBER 1060-05-73,75		PS&E SHEET NO: E
DATE	SEPT. 20, 2004			

FILE NAME: F:\MILWAUKEE\PROJECTS\1060-05-73,75\1060-05-73,75.DWG
 PLOT DATE: 10/14/2004
 WISDOT/CADD SHEET 75

EXHIBIT F

(2 of 2)