A photograph of a construction site. In the foreground, a worker in a blue hard hat, orange safety vest, and dark jacket is looking towards the camera. To his right, another worker in a white hard hat and blue safety vest with reflective stripes is seen from the back. In the background, a yellow Caterpillar excavator with 'VET' branding is visible. A large wooden pallet loaded with materials is suspended in the air by ropes and hooks. A tall, modern building with many windows is in the background under a clear blue sky.

THE NORTHWESTERN MUTUAL TOWER AND COMMONS

SBE AND RPP PARTICIPATION THROUGH
SEPT. 30, 2014

Prepared in conjunction with Prism Technical Management &
Marketing Services, LLC

TABLE OF CONTENTS

EXECUTIVE SUMMARY	2
OUR STORY	7
SMALL BUSINESS ENTERPRISE RESULTS	10
SBE Total Participation	11
SBE Professional Services Providers	16
SBE Construction Providers	18
RESIDENTS PREFERENCE PROGRAM	21
RPP Participation by Contractor	23
RPP Participation by Trade	26
APPRENTICESHIP PROGRAM	29



On the cover: Walter Lee (left), an RPP iron worker with Construction Supply and Erection Inc., and Dave Kattar with Gilbane | C.G. Schmidt unload steel for The Commons foundation.

The Northwestern Mutual Tower and Commons construction site came alive in the third quarter of 2014. After the last sections of the east building were taken down in July and a festive groundbreaking ceremony kicked off construction in August, crews dug right in defining and excavating the footprint of The Tower and deconstructing the south building atrium. From the start of the project through Sept. 30, 2014, Milwaukee residents eligible under the Residents Preference Program (RPP) have performed 45.0 percent of the construction hours on the project, and Small Business Enterprises (SBEs) have been awarded 27.9 percent of the total value of applicable contracts.

SECTION 1

EXECUTIVE SUMMARY

Our decision to build a signature development downtown makes a huge statement about metro Milwaukee's attractiveness as a place to live and work and its ability to draw top talent and new businesses to the area. We are proud to call Milwaukee's lakefront our home.



Northwestern Mutual Tower and Commons Executive Summary

Small Business Enterprises in Milwaukee have been awarded \$92.7 million in contracts and commitments, or 27.9 percent of the total value of applicable construction and professional services contracts to date.

Milwaukee residents eligible under the Residents Preference Program (RPP) have performed 45.0 percent of the construction hours on the project to date.

Northwestern Mutual is committed to Milwaukee's success.

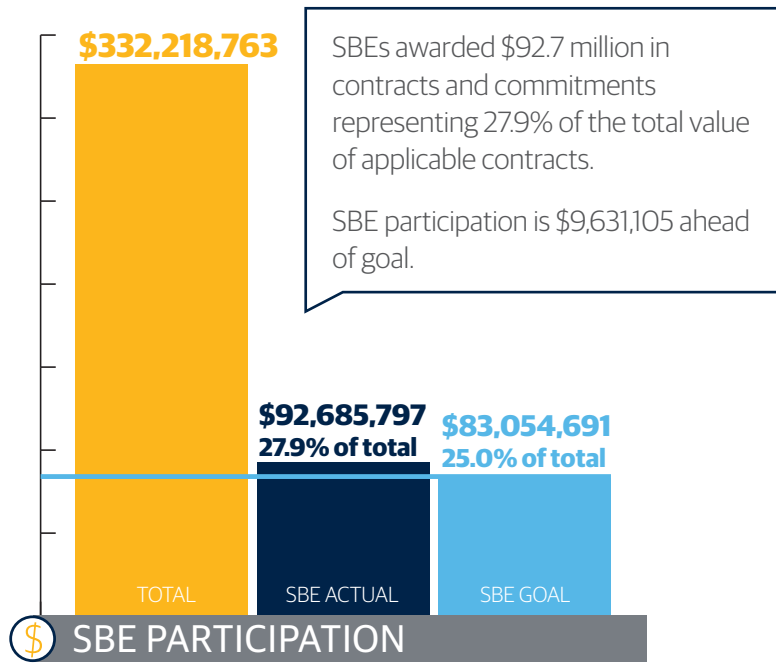
Whether it's our promise to keep or add 3,000 good-paying jobs at our downtown headquarters; the millions of dollars in philanthropic donations we make in the area; our partnerships in the Amani, Metcalfe Park and Muskego Way neighborhoods; or working hard to make sure local small businesses get the chance to help build our new Tower and Commons, it's all our way of saying, "We Believe in Milwaukee!"

We promised by the end of our building project in 2017 that 25.0 percent of the total value of applicable contracts awarded to build our Tower and Commons would go to Milwaukee Small Business Enterprises (SBEs). We promised that at least 40.0 percent of the labor hours on the project would be worked by Milwaukee residents eligible under the Residents Preference Program (RPP).

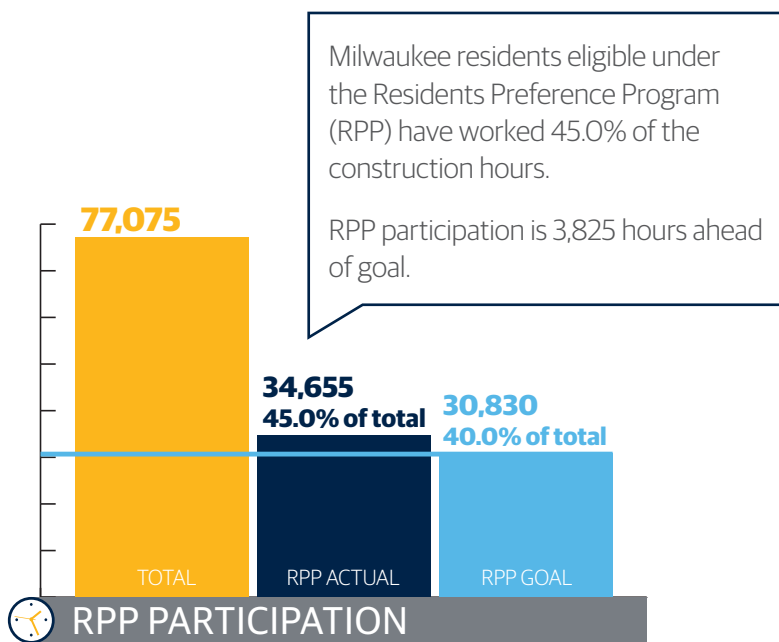
Recognizing that each quarter along the way we may be somewhat above or below the ultimate goal, we are pleased to report that we are ahead of these goals as of Sept. 30, 2014.

Northwestern Mutual Tower and Commons Construction

Start of Project through Sept. 30, 2014



Dollar Value of Applicable Contracts Awarded



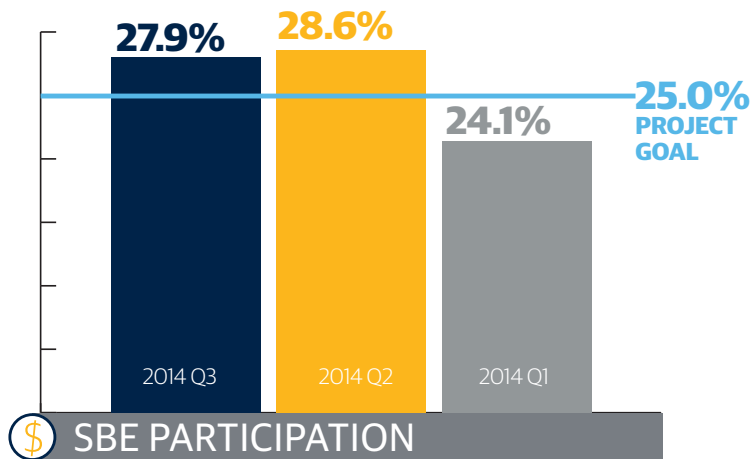
Construction Hours Worked

PROJECT HIGHLIGHTS

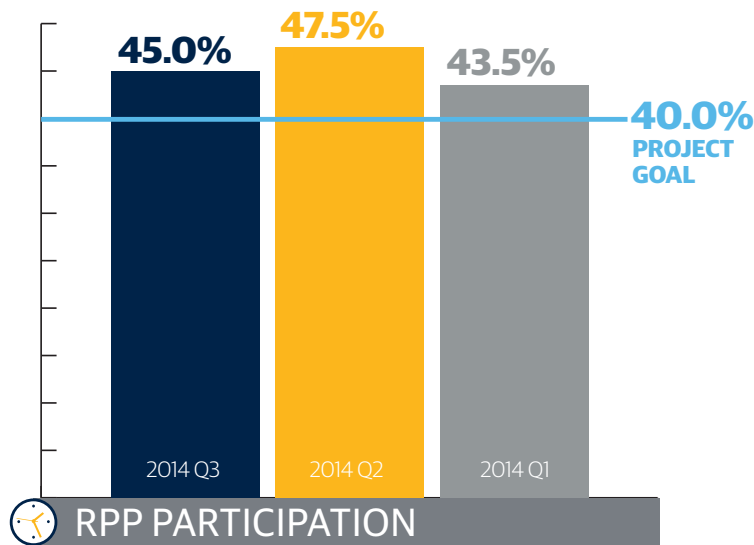
- \$332.2 million in applicable contracts awarded.
- \$92.7 million in contracts and commitments (27.9 percent of total) awarded to City of Milwaukee Small Business Enterprises (SBEs), exceeding 25.0 percent goal.
- Residents Preference Program (RPP) participation is ahead of goal. Milwaukee residents eligible under RPP have worked 45.0% of construction hours.
- 172 City of Milwaukee residents hired to work on the project.
- 28 apprentices working on project.
- Outreach to more than 100 community-based organizations to help ensure project participation from diverse segments of the Milwaukee community.
- 15 informational sessions highlighted contracting opportunities; more than 300 businesses and organizations attended.
- Support given to Wisconsin Regional Training Partnership/BIG STEP on five work force fairs for city residents and the start of two apprenticeship training cohorts.

Northwestern Mutual Tower and Commons Construction

Start of Project through Sept. 30, 2014



Percentage of Applicable Contract Dollar Value Awarded to SBEs



Percentage of Construction Hours Worked by RPP Participants

PROJECT STATUS

AS OF SEPT 30, 2014

- More than 300 community guests and elected officials attended Tower and Commons groundbreaking.
- East Office Building deconstruction completed, and more than 90 percent of materials reused or recycled.
- Skywalk between our south building and downtown parking structure removed.
- Our downtown buildings successfully disconnected from one another.
- Underground utilities running through the future construction site successfully re-routed under streets adjacent to downtown campus.
- Extensive site preparation completed and excavation begun.

LOOKING AHEAD

- Future skywalk plans completed and approved by the city.
- Site excavation completed.
- Fifth Master Class held, engaging students from six different colleges in The Tower and Commons building project
- Work begun on "peeling back the lid" of our old north building basement to prepare the site for The Commons foundation.



Northwestern Mutual Tower and Commons Construction

Participation Performance Report

This Northwestern Mutual Tower and Commons Participation Performance Report details Northwestern Mutual's progress toward meeting the goals of the Human Resources Agreement it has with the City of Milwaukee. In constructing the 1.1 million-square-foot expansion of its downtown Milwaukee office complex, Northwestern Mutual has agreed to:

- Use certified Small Business Enterprises (SBEs) and/or businesses certified under equivalent programs for 25.0 percent of applicable construction costs.
- Use underemployed City of Milwaukee residents via the Residents Preference Program (RPP) for 40.0 percent of the construction hours worked.
- Ensure payment of prevailing wages where applicable.

Northwestern Mutual has engaged a building design, construction and consulting team that understands the critical importance we have placed on meeting these SBE and RPP goals.

Development Manager
Hines

General Contractor Team
Gilbane | C. G. Schmidt Inc.

Participation Coordinator
Prism Technical

SECTION 2

OUR STORY

Northwestern Mutual has called Milwaukee home since 1859.

Today, more than 4.3 million people rely on Northwestern Mutual for insurance and investment solutions.



THE TOWER

32 stories

550 feet

Second tallest building in state

Largest building in city occupied by one company

Our investment in our downtown campus is also an investment in Milwaukee.

The entire metro area benefits when top employers make a long-term commitment to grow in downtown Milwaukee. It means more jobs, a stronger tax base, more community support from businesses, and more top talent giving back to all areas of the community.

1914 HEADQUARTERS

Iconic structure anchors downtown campus

THE COMMONS

3 stories

Public dining and visitors center

Community access

3,000 DOWNTOWN MILWAUKEE JOBS RETAINED OR ADDED THROUGH CAMPUS EXPANSION



When he received this pledge from Northwestern Mutual President Robert Dineen (right), United Fund General Chairman John Paige called the experience "one of the most pleasant of my entire nine months" of working in the campaign.



In 1951, Northwestern Mutual formed a "blood bank" for home office employees, retirees and their immediate family members. Extra pints were donated to local organizations in need. In 1971, blood banks were discontinued and blood centers took on the role.



Every year, Northwestern Mutual employees lined the street in front of the Wisconsin Avenue headquarters to watch Milwaukee's Great Circus Parade. This photo shows the intricate bandwagon in the 1985 parade.

We've grown up with Milwaukee as our hometown for nearly 160 years.



We are stewards of our communities by bringing together groups of people and organizations and leveraging the power of our employees, field and financial resources to improve the lives of children and families.



A. On March 15, the Milwaukee Public Museum opened the first new permanent exhibition in 10 years, Crossroads of Civilization: Ancient Worlds of the Near East and Mediterranean. Made possible by the Northwestern Mutual Foundation, the exhibit explores how the ancient civilizations of Africa, Europe and Asia came together to form an epicenter of complex culture, creating not just a physical crossroads, but an intellectual one as well.



B. For the fifth year in a row, the Northwestern Mutual Foundation is partnering with the Brewers Community Foundation for its Stolen Bases, Happy Faces campaign benefiting Big Brothers Big Sisters of Metro Milwaukee. Throughout the 2015 season, every Brewers stolen base at Miller Park will generate a \$1,000 donation to Big Brothers Big Sisters. To date, Northwestern Mutual has donated more than \$350,000 through this partnership.

C. Since opening on the lakefront in 2007, Discovery World has traditionally been closed to the public on Mondays. The Northwestern Mutual Foundation is helping Discovery World connect with more children and families by funding an extra day of operating hours from April 6 to Aug. 31, allowing them to accommodate more school groups and tourists..

SECTION 3

SMALL BUSINESS ENTERPRISE RESULTS

We believe in promoting a healthy business environment. Strong businesses, especially small- and medium-sized companies, are the backbone of the city's economy. They contribute to the vitality of the city.

Tower and Commons Small Business Enterprise (SBE) Participation

Northwestern Mutual and the City of Milwaukee share an interest in promoting a healthy local business environment. Strong businesses, especially small- and medium-sized companies, are the backbone of the city's economy. They create jobs, pay taxes, and contribute to the vitality of the city.

That's why we set a goal for our downtown development to not only have an impact on our business, but to help raise the tide for many businesses in the city.

Small Business Enterprises are companies with annual revenues below a stated floor and typically owned by one or more individuals who are at an educational, social, economic or other disadvantage. SBEs, including many businesses owned by minorities, women and veterans involved in building design and construction, are an integral part of creating our Tower and Commons.

TABLE 1: SBE PARTICIPATION LEVEL

Start of Project through Sept. 30, 2014

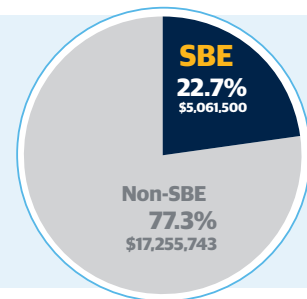
TOTAL VALUE OF APPLICABLE CONTRACTS AWARDED		\$332,218,763	
	GOAL	ACTUAL	STATUS
SBE Participation Percentage	25.0%	27.9%	+ 2.9
Value of SBE Contracts Awarded	\$ 83,054,691	\$92,685,797	+ \$9,631,106



CONTRACT PAYMENTS MADE

SBEs have received 22.7 percent or \$5,061,500 of applicable project contract payments made through Sept. 30, 2014. Payments on

contracts awarded will continue to be made throughout the project as work is completed.



SMALL BUSINESS ENTERPRISES

Constructing a high-rise office building requires a wide variety of construction-related services. We're proud to involve a large number of companies in building our Tower and Commons. Table 2 shows details of all Small Business Enterprises involved from the start of

the project to date. For ease of reference, we have also broken out the SBE professional services providers (see Table 3, page 16) from the SBE construction providers (see Table 4, page 18).

TABLE 2: TOTAL SBE PARTICIPATION (PROFESSIONAL SERVICES AND CONSTRUCTION)

SBE FIRM	SUBCONTRACTOR TO	TRADE/DESCRIPTION OF WORK	TOTAL CONTRACT AMOUNT	AMOUNT PAID THROUGH 9/30/14
American Design Inc.	Kendall Heaton Associates	EOB Demolition Project - Full Services	\$43,320	\$42,958
American Design Inc.	Kendall Heaton Associates	EOB Selective Salvage Project - Full Services	\$6,313	\$6,313
American Design Inc.	VDTA	Fitness Center	\$109,400	\$8,825
American Design Inc.	VDTA	Office Tower Interior - Production Architect	\$638,735	\$-
Arrow-Crete Construction LLC	Globe Contractors	Concrete	\$104,987	\$104,987
Arteaga Construction	Veit & Company Inc.	Crane	\$20,000	\$-
Autumn Trucking Inc.	Veit & Company Inc.	Fuel	\$250,000	\$94,239
Autumn Trucking Inc.	Veit & Company Inc.	Fuel and Oil	\$259,371	\$259,371
Autumn Trucking Inc.	Globe Contractors	Fuel	\$120,006	\$120,006
Barrientos Design & Consulting	Kendall Heaton Associates	Van Buren Bridge Project - Full Services	\$166,610	\$136,001
BestEd Business	Gilbane C.G. Schmidt Inc.	Safety Protection	\$5,280	\$-
Choice Construction Companies Inc.	LeJeune Steel Co.	Steel Erection	\$6,780,000	\$-
Con-Cor Co. Inc.	Giles Engineering Associates	Concrete Coring	\$79,043	\$79,043
Con-Cor Co. Inc.	C.G. Schmidt Inc.	Concrete Cutting	\$1,139	\$1,139
Con-Cor Co. Inc.	Veit & Company Inc.	Concrete Sawing	\$4,712	\$3,420
Con-Cor Co. Inc.	Munson Inc.	Core-drilling floor	\$5,775	\$5,775
Con-Cor Co. Inc.	Veit & Company Inc.	Saw Cutting	\$5,760	\$5,760
Con-Cor Co. Inc.	Globe Contractors	Sawing	\$14,011	\$14,011
Con-Cor Co. Inc.	Staff Electric	Labor and material coring	\$10,350	\$10,350
Continuum Architects & Planners S.C.	Kendall Heaton Associates	Code Review and Permit Expediting Services	\$31,320	\$18,792

(CONTINUED ON PAGE 13)

TABLE 2: TOTAL SBE PARTICIPATION (PROFESSIONAL SERVICES AND CONSTRUCTION) (CONTINUED)

SBE FIRM	SUBCONTRACTOR TO	TRADE/DESCRIPTION OF WORK	TOTAL CONTRACT AMOUNT	AMOUNT PAID THROUGH 9/30/14
Continuum Architects & Planners S.C.	Kendall Heaton Associates	Old NOB Basement Project - Full Services	\$113,244	\$43,995
DAAR Engineering	Gilbane C.G. Schmidt	Site Survey	\$299,561	\$-
Dairyland Electric Co. Inc.	Staff Electric	Electrical Work	\$306,320	\$306,320
Dairyland Electric Co. Inc.	Staff Electric	Electrical Work	\$16,624	\$16,624
Dairyland Electric Co. Inc.	Staff Electric	Install & Furnish Fire Alarm & Generator	\$3,250,000	\$-
Dairyland Electric Co. Inc.	Staff Electric	Switchgear	\$2,209	\$2,209
Dakota Intertek Corp.	Giles Engineering Associates	Labor and hand augering services	\$3,411	\$3,411
DUWE Metals Products Inc.	C.G. Schmidt Inc.	Acoustic Screen Wall	\$60,304	\$60,304
DUWE Metals Products Inc.	Benson Industries, Inc.	Shop and Field Labor	\$15,867,515	\$-
EKG Trucking LLC	Globe Contractors	Trucking/Permits	\$470,302	\$470,302
E.R. Abernathy Industrial Inc.	Gilbane C.G. Schmidt	Safety Protection	\$5,280	\$-
Fusion Integrated Solutions LLC	HMA Consultants	Construction Services	\$45,000	\$-
Greenfire Management Services LLC	Gilbane C.G. Schmidt	Project Engineering Services	\$166,400	\$-
Hard Rock Sawing & Drilling Specialists Co.	J.F. Ahern Co.	Concrete Cutting	\$9,240	\$9,240
Hawk Construction LLC	Veit & Company Inc.	Hydro Excavation	\$-	\$-
Hawk Construction LLC	C.G. Schmidt Inc.	Foundations & Helical Piers	\$27,929	\$27,929
Hetzel Tile and Marble Inc.	Gilbane C.G. Schmidt	Hard Tile	\$1,954,575	\$-
Hetzel Tile and Marble Inc.	Gilbane C.G. Schmidt	Interior Stone Installation	\$1,847,955	\$-
Hetzel-Sanflippo Inc.	Gilbane C.G. Schmidt	Misc. General Conditions	\$72,760	\$-
Hetzel-Sanflippo Inc.	Gilbane C.G. Schmidt	Mock Up	\$459,500	\$-
Hiram Power Electric LLC	Staff Electric Co. Inc.	Furnish Fixtures	\$2,537,299	\$-
Hiram Power Electric LLC	Staff Electric Co. Inc.	Furnish Medium Voltage	\$10,908	\$-
Hurt Electric Inc.	Staff Electric Co. Inc.	Install & Furnish Distribution & UPS	\$5,549,948	\$-
IBC Engineering Services Inc.	Sebesta Blomberg & Associates	Mechanical and Electric Commissioning	\$45,760	\$-
IBC Engineering Services Inc.	Alvine Engineering	MEP Engineering for Tower Center TI	\$495,760	\$362,166
IBC Engineering Services Inc.	Aquatic Design & Engineering	Water Feature Consultant	\$33,275	\$-
JCP Construction LLC	Gilbane C.G. Schmidt	Foundation Waterproofing	\$3,605,835	\$-
KMI Construction LLC	C.G. Schmidt Inc.	Masonry	\$4,150	\$4,150

(CONTINUED ON PAGE 14)

TABLE 2: TOTAL SBE PARTICIPATION (PROFESSIONAL SERVICES AND CONSTRUCTION) (CONTINUED)

SBE FIRM	SUBCONTRACTOR TO	TRADE/DESCRIPTION OF WORK	TOTAL CONTRACT AMOUNT	AMOUNT PAID THROUGH 9/30/14
KMI Construction LLC	Gilbane C.G. Schmidt	Masonry	\$7,222,070	\$-
Marek Landscaping LLC	Veit & Company, Inc.	Erosion Control	\$49,352	\$49,352
McDowell Construction Corp.	Globe Contractors	Asphalt	\$98,658	\$98,658
McDowell Construction Corp.	Veit & Company, Inc.	Fencing	\$77,423	\$77,423
Mckinley's Corp.	Grunau Company, Inc.	HVAC Demolition	\$12,900	
Metropolitan Services Inc.	Globe Contractors	Traffic Control	\$151,998	\$151,998
Milwaukee Metal Products	Terra Engineering	Tieback Bearing Plates	\$4,222	\$4,222
Natural Athletic Turf	Stano Landscaping	Hardscape Restoration	\$50,850	\$50,850
Nuvo Construction Co. Inc.	Terra Engineering	Supply Bulk Cement	\$42,372	\$-
PA Roeper & Associates	Graef USA	Drafting Services	\$22,500	\$22,500
PA Roeper & Associates	Graef USA	Drafting Services	\$22,500	\$22,500
P.L. Freeman Co.	Terra Engineering	Wales	\$61,280	\$53,075
Price & Sons Inc.	Staff Electric	Furnish Miscellaneous Supplies	\$2,133,120	\$-
Prism Technical	Northwestern Mutual	HR Consultant	\$546,155	\$228,691
Quorum Architects Inc.	The Office of James Burnett	Associate Landscape Architects	\$218,230	\$112,570
Quorum Architects Inc.	Kendall Heaton Associates	Graphics/Wayfinding Consultant	\$239,490	\$142,790
Rams Contracting Ltd.	Veit & Company Inc.	Trucking	\$12,513	\$12,513
Rinka Chung Architecture Inc.	VDTA	Café Project - Production Architect	\$64,500	\$6,750
Rinka Chung Architecture Inc.	VDTA	Credit Union Project - Full Services	\$66,150	\$52,550
Rinka Chung Architecture Inc.	Kendall Heaton Associates	North Parking Garage - Full Services	\$58,000	\$15,510
Rinka Chung Architecture Inc.	BuroHappold Engineering	Solar Reflectivity Site Assessment	\$6,000	\$3,001
Rockwell Mechanical LLC	J.F. Ahern Co.	Chiller Installation	\$32,130	\$32,130
Rockwell Mechanical LLC	J.F. Ahern Co.	Chiller Procurement	\$386,250	\$386,250
Security Officer Services Inc.	Gilbane C.G. Schmidt	Site Security	\$195,000	\$13,658
Sonag Ready Mix LLC	C.G. Schmidt Inc.	CIP Concrete	\$20,846	\$20,846
Spann & Associates	Gilbane C.G. Schmidt	Project Engineering Services	\$173,680	\$-
Thomas A. Mason Co. Inc.	G3 Technologies	Painting	\$1,485,933	\$-
Thomas A. Mason Co. Inc.	Gilbane C.G. Schmidt	Soft Flooring	\$1,921,906	\$-

(CONTINUED ON PAGE 15)

TABLE 2: TOTAL SBE PARTICIPATION (PROFESSIONAL SERVICES AND CONSTRUCTION) (CONTINUED)

SBE FIRM	SUBCONTRACTOR TO	TRADE/DESCRIPTION OF WORK	TOTAL CONTRACT AMOUNT	AMOUNT PAID THROUGH 9/30/14
Tremmel-Anderson Trucking LLC	New Berlin Grading	Trucking	\$6,025	\$6,025
Tremmel-Anderson Trucking LLC	Veit & Company Inc.	Trucking	\$-	\$-
Valente Transport Inc.	Veit & Company Inc.	Trucking	\$35,383	\$35,383
Valente Transport Inc.	Veit & Company Inc.	Trucking/Disposal	\$828,802	\$828,802
Vizcaino's Trucking LLC	Veit & Company Inc.	Trucking	\$20,164	\$20,164
Vizcaino's Trucking LLC	Veit & Company Inc.	Trucking	\$18,929	\$22,468
Vizcaino's Trucking LLC	Globe Contractors	Trucking	\$127,324	\$127,324
ZS LLC	Entuitive Corp.	Building Enclosure Sub-Consultant	\$42,950	\$7,140
ZS LLC	Gilbane C.G. Schmidt	Engineering Services	\$30,000	\$-
ZS LLC	Applied Technical Services Inc.	Exterior Building Maintenance	\$62,975	\$54,593
ZS LLC	Northwestern Mutual	Laser Scan	\$51,000	\$-
ZS LLC	Kendall Heaton Associates	Structural Engineering	\$23,124	\$23,124
ZS LLC	Magnusson Klemencic Associates	Structural Engineering	\$210,000	\$161,000
TO BE DETERMINED	TO BE DETERMINED	TO BE DETERMINED	\$29,732,587*	\$-
TOTAL SBE PARTICIPATION			\$ 92,685,797	\$ 5,061,500
% OF APPLICABLE CONTRACT VALUE AWARDED			27.9%	
% OF APPLICABLE PAYMENTS MADE				22.7%

* Prime contractors and subcontractors have been awarded contracts that include \$29.7 million for SBEs yet to be named.

HETZEL-SANFILIPPO, INC.

Hetzel-Sanfilippo, Inc. (HSI), a Milwaukee-area union drywall contractor, has been family owned since its inception in 1993. The company's core services include finish carpentry, cold-form metal framing, and exterior wall finishing. President Karen Hetzel has more than 18 years' experience in the construction industry. Other key contributors include part-owner Peter Sanfilippo and Field Supervisor Jeffrey Hetzel, who has more than 35 years of carpentry experience.

Being selected to work on the Northwestern Mutual Tower and Commons project and obtaining certification as an SBE, a women-owned (WBE) and disadvantaged business enterprise (DBE) have helped HSI secure additional work. Northwestern Mutual opened doors for the company in a tough industry and allowed HSI to market its participation on the project. The company recently attended a job fair to hire more employees.

Working closely with the general contractor team of Gilbane | C. G. Schmidt has provided significant mentoring opportunities. "They showed us how to conduct our business from start to finish," said Karen Hetzel.



TABLE 3: SBE PROFESSIONAL SERVICES PROVIDERS

Much of the focus and excitement of a major building project is on the many construction and trade groups who lift skyscrapers out of the ground. Before a shovelful of dirt is moved, however, architects, engineers and

other professional service providers design and plan the structure. For ease of reference, we have separated just the SBE professional services providers listed in Table 2 and shown them here.

SBE FIRM	SUBCONTRACTOR TO	TRADE/DESCRIPTION OF WORK	TOTAL CONTRACT AMOUNT	AMOUNT PAID THROUGH 9/30/14
American Design Inc.	Kendall Heaton Associates	EOB Selective Salvage Project - Full Services	\$ 6,313	\$ 6,313
American Design Inc.	Kendall Heaton Associates	EOB Demolition Project - Full Services	\$43,320	\$42,958
American Design Inc.	VDTA	Office Tower Interior - Production Architect	\$638,735	\$-
American Design Inc.	VDTA	Fitness Center	\$109,400	\$8,825
Barrientos Design & Consulting	Kendall Heaton Associates	Van Buren Bridge Project - Full Services	\$166,610	\$136,001
Con-Cor Co. Inc.	Giles Engineering Associates	Concrete Coring	\$79,043	\$79,043
Continuum Architects + Planners S.C.	Kendall Heaton Associates	Code Review and Permit Expediting Services	\$31,320	\$18,792
Continuum Architects + Planners S.C.	Kendall Heaton Associates	Old NOB Basement Project - Full Services	\$113,244	\$43,995
Dakota Intertek Corp.	Giles Engineering Associates	Labor and hand augering services	\$3,411	\$3,411
Fusion Integrated Solutions LLC	HMA Consultants	Construction Services	\$45,000	\$-
IBC Engineering Services Inc.	Sebesta Blomberg & Associates	Mechanical and Electric Commissioning	\$45,760	\$-
IBC Engineering Services Inc.	Alvine Engineering	MEP Engineering for Tower Center TI	\$495,760	\$362,166
IBC Engineering Services Inc.	Aquatic Design & Engineering	Water Feature Consultant	\$33,275	\$-
PA Roeper & Associates	Graef USA	Drafting Services	\$22,500	\$22,500
Prism Technical	Northwestern Mutual	HR Consultant	\$546,155	\$228,691
Quorum Architects Inc.	Kendall Heaton Associates	Graphics/Wayfinding Consultant	\$239,490	\$142,790
Quorum Architects Inc.	The Office of James Burnett	Associate Landscape Architects	\$218,230	\$112,570
Rinka Chung Architecture Inc.	VDTA	Café Project - Production Architect	\$64,500	\$6,750
Rinka Chung Architecture Inc.	VDTA	Credit Union Project - Full Services	\$66,150	\$52,550
Rinka Chung Architecture Inc.	Kendall Heaton Associates	North Parking Garage - Full Services	\$58,000	\$15,510
Rinka Chung Architecture Inc.	Buro Happold Engineering	Solar Reflectivity Site Assessment	\$6,000	\$3,001
ZS, LLC	Magnusson Klemencic Associates	Structural Engineering	\$210,000	\$161,000
ZS, LLC	Entuitive Corporation	Building Enclosure Sub-Consultant	\$42,950	\$7,140

(CONTINUED ON PAGE 17)

TABLE 3: SBE PROFESSIONAL SERVICES PROVIDERS (CONTINUED)

SBE FIRM	SUBCONTRACTOR TO	TRADE/DESCRIPTION OF WORK	TOTAL CONTRACT AMOUNT	AMOUNT PAID THROUGH 9/30/14
ZS, LLC	Northwestern Mutual	Laser Scan	\$51,000	\$-
ZS, LLC	Kendall Heaton Associates	Structural Engineer	\$23,124	\$23,124
ZS, LLC	Applied Technical Services Inc.	Exterior Building Maintenance	\$62,975	\$54,593
TOTAL SBE PROFESSIONAL SERVICES PROVIDER PARTICIPATION			\$ 3,422,265	\$ 1,531,723
% OF APPLICABLE PROFESSIONAL SERVICES CONTRACT VALUE AWARDED			35.2%	
% OF APPLICABLE PROFESSIONAL SERVICES PAYMENTS MADE				24.8%
Total SBE Professional Services Provider Participation Including Contracts Awarded and Paid to Specialty Discipline Providers Kendall/Heaton Associates, Ring & DuChateau, Valerio Dewalt Train Associates (VDTA) and Pickard Chilton			\$ 9,722,827	\$ 6,184,245

IBC ENGINEERING SERVICES

IBC Engineering Services was founded in 1991 by Fienna and Lev Zvenyach with the goal of bringing together building form, function, performance and cost in the design and commissioning of energy-efficient and sustainable HVAC, electrical, plumbing and fire protection systems. The company currently has 26 employees and plans to expand services and locations over the next few years.

At IBC, multiple disciplines work together from the onset of a project to identify design solutions that may not otherwise be considered. IBC's engineers calculate energy use and cost early in the design to inform designers of the implications of plan configurations, mechanical systems, and lighting options. Alvine Engineering contracted IBC as a subconsultant to design the mechanical, electrical and plumbing for The Commons.

IBC will work on commissioning another section of The Tower and Commons as a subconsultant to Sebesta Blomberg & Associates, Inc. "This project has provided us with a great experience," said President and CEO Fienna Zvenyach. "As a smaller firm, it is difficult to get experience on large projects of this sort, so I am really glad to be working on the Northwestern Mutual project."

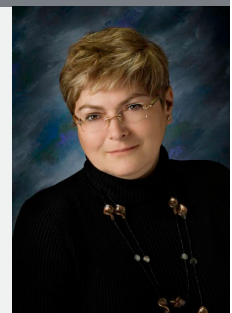


TABLE 4: SBE CONSTRUCTION PROVIDERS

The visible creation of our Tower and Commons is in the capable hands of the construction contractors and subcontractors. They are responsible for preparing the construction site and erecting the building that will

change the shape of our Milwaukee skyline. For ease of reference, we have separated just the SBE construction providers listed in Table 2 and shown them here.

SBE FIRM	SUBCONTRACTOR TO	TRADE/DESCRIPTION OF WORK	TOTAL CONTRACT AMOUNT	AMOUNT PAID THROUGH 9/30/14
Arrow-Crete Construction	Globe Contractors Inc.	Concrete	\$104,987	\$104,987
Arteaga Construction	Veit & Company Inc.	Crane	\$20,000	\$-
Autumn Trucking Inc.	Veit & Company Inc.	Fuel and Oil	\$259,371	\$259,371
Autumn Trucking Inc.	Globe Contractors Inc.	Fuel	\$120,006	\$120,006
Autumn Trucking Inc.	Veit & Company Inc.	Fuel	\$250,000	\$94,239
BestEd Business	Gilbane C.G. Schmidt Inc.	Safety Protection	\$5,280	\$-
Choice Construction Companies Inc.	LeJeune Steel Co.	Steel Erection	\$6,780,000	\$-
Con-Cor Co. Inc.	C.G. Schmidt Inc.	Concrete Cutting	\$1,139	\$1,139
Con-Cor Co. Inc.	Veit & Company Inc.	Saw Cutting	\$5,760	\$5,760
Con-Cor Co. Inc.	Globe Contractors Inc.	Sawing	\$14,011	\$14,011
Con-Cor Co. Inc.	Munson Inc.	Core-drilling floor	\$5,775	\$5,775
Con-Cor Co. Inc.	Veit & Company Inc.	Concrete Sawing	\$4,712	\$3,420
Con-Cor Co. Inc.	Staff Electric	Labor and material coring	\$10,350	\$10,350
DAAR Engineering	Gilbane C.G. Schmidt	Site Survey	\$299,561	\$-
Dairyland Electric Co. Inc.	Staff Electric Co. Inc.	Install & Furnish Fire Alarm & Generator	\$3,250,000	\$-
Dairyland Electric Co. Inc.	Staff Electric Co. Inc.	Switchgear	\$2,209	\$2,209
Dairyland Electric Co. Inc.	Staff Electric Co. Inc.	Electric	\$306,320	\$306,320
Dairyland Electric Co. Inc.	Staff Electric Co. Inc.	Electrical Work	\$16,624	\$16,624
Duwe Metals Products Inc.	C.G. Schmidt Inc.	Acoustic Screen Wall	\$60,304	\$60,304
Duwe Metals Products Inc.	Benson Industries, Inc.	Shop and Field Labor	\$15,867,515	\$-
EKG Trucking LLC	Globe Contractors Inc.	Trucking/Permits	\$470,302	\$470,302
E.R. Abernathy Industrial Inc.	Gilbane C.G. Schmidt	Safety Protection	\$5,280	\$-
Greenfire Management Services LLC	Gilbane C.G. Schmidt	Project Engineering Services	\$166,400	\$-
Hard Rock Sawing & Drilling Specialists Co.	J.F. Ahern Co.	Concrete Cutting	\$9,240	\$9,240

(CONTINUED ON PAGE 19)

TABLE 4: SBE CONSTRUCTION PROVIDERS (CONTINUED)

SBE FIRM	SUBCONTRACTOR TO	TRADE/DESCRIPTION OF WORK	TOTAL CONTRACT AMOUNT	AMOUNT PAID THROUGH 9/30/14
Hawk Construction LLC	Veit & Company Inc.	Hydro Excavation	\$-	\$-
Hawk Construction LLC	C.G. Schmidt Inc.	Foundations & Helical Piers	\$27,929	\$27,929
Hetzel Tile and Marble Inc.	Gilbane C.G. Schmidt	Hard Tile	\$1,954,575	\$-
Hetzel Tile and Marble Inc.	Gilbane C.G. Schmidt	Interior Stone Installation	\$1,847,955	\$-
Hetzel-Sanflippo Inc.	Gilbane C.G. Schmidt	Mock Up	\$459,500	\$-
Hetzel-Sanflippo Inc.	Gilbane C.G. Schmidt	Misc. General Conditions	\$72,760	\$-
Hiram Power Electric LLC	Staff Electric Co. Inc.	Furnish Medium Voltage	\$10,908	\$-
Hiram Power Electric LLC	Staff Electric Co. Inc.	Furnish Fixtures	\$2,537,299	\$-
Hurt Electric Inc.	Staff Electric Co. Inc.	Install & Furnish Distribution & UPS	\$5,549,948	\$-
JCP Construction LLC	Gilbane C.G. Schmidt	Foundation Waterproofing	\$3,605,835	\$-
KMI Construction LLC	C.G. Schmidt Inc.	Masonry	\$4,150	\$4,150
KMI Construction LLC	Gilbane C.G. Schmidt	Masonry	\$7,222,070	\$-
Marek Landscaping LLC	Veit & Company Inc.	Erosion Control	\$49,352	\$49,352
McDowell Construction Corp.	Veit & Company Inc.	Fencing	\$77,423	\$77,423
McDowell Construction Corp.	Globe Contractors Inc.	Asphalt	\$98,658	\$98,658
Mckinley's Corp.	Grunau Co. Inc.	HVAC Demolition	\$12,900	
Metropolitan Services Inc.	Globe Contractors Inc.	Traffic Control	\$151,998	\$151,998
Milwaukee Metal Products	Terra Engineering	Tieback Bearing Plates	\$4,222	\$4,222
Natural Athletic Turf	Stano Landscaping	Hardscape Restoration	\$50,850	\$50,850
Nuvo Construction Co. Inc.	Terra Engineering	Supply Bulk Cement	\$42,372	\$-
PA Roeper & Associates	Graef USA	Drafting Service	\$22,500	\$22,500
P.L. Freeman Co.	Terra Engineering	Wales	\$61,280	\$53,075
Price & Sons Inc.	Staff Electric Co. Inc.	Furnish Miscellaneous Supplies	\$2,133,120	\$-
Rams Contracting Ltd.	Veit & Company Inc.	Trucking	\$12,513	\$12,513
Rockwell Mechanical LLC	J.F. Ahern Co.	Chiller Procurement	\$386,250	\$386,250
Rockwell Mechanical LLC	J.F. Ahern Co.	Chiller Installation	\$32,130	\$32,130
Security Officer Services Inc.	Gilbane C.G. Schmidt	Site Security	\$195,000	\$13,658

(CONTINUED ON PAGE 20)

TABLE 4: SBE CONSTRUCTION PROVIDERS (CONTINUED)

SBE FIRM	SUBCONTRACTOR TO	TRADE/DESCRIPTION OF WORK	TOTAL CONTRACT AMOUNT	AMOUNT PAID THROUGH 9/30/14
Sonag Ready Mix LLC	CG Schmidt Inc.	CIP Concrete	\$20,846	\$20,846
Spann & Associates	Gilbane C.G. Schmidt	Project Engineering Services	\$173,680	\$-
Thomas A. Mason Co. Inc.	Gilbane C.G. Schmidt	Soft Flooring	\$1,921,906	\$-
Thomas A. Mason Co. Inc.	G3 Technologies	Painting	\$1,485,933	\$-
Tremmel-Anderson Trucking LLC	New Berlin Grading Inc.	Trucking	\$6,025	\$6,025
Tremmel-Anderson Trucking LLC	Veit & Company Inc.	Trucking	\$-	\$-
Valente Transport Inc.	Veit & Company Inc.	Trucking/Disposal	\$828,802	\$828,802
Valente Transport Inc.	Veit & Company Inc.	Trucking	\$35,383	\$35,383
Vizcaino's Trucking LLC	Veit & Company Inc.	Trucking	\$20,164	\$20,164
Vizcaino's Trucking LLC	Veit & Company Inc.	Trucking	\$18,929	\$22,468
Vizcaino's Trucking LLC	Globe Contractors Inc.	Trucking	\$127,324	\$127,324
ZS LLC	Gilbane C.G. Schmidt	Engineering Services	\$30,000	\$-
TO BE DETERMINED	TO BE DETERMINED	TO BE DETERMINED	\$ 29,732,587*	
TOTAL SBE CONSTRUCTION PROVIDER PARTICIPATION			\$ 89,263,531	\$ 3,529,776
% OF APPLICABLE CONSTRUCTION CONTRACT VALUE AWARDED			27.7%	
% OF APPLICABLE CONSTRUCTION PAYMENTS MADE			21.9%	

* Prime contractors and subcontractors have been awarded contracts that include \$29.7 million for SBEs yet to be named.

SECTION 4

RESIDENTS PREFERENCE PROGRAM

We are committed to improving the lives of families in Southeastern Wisconsin.

Residents Preference Program Participation

The City of Milwaukee Residents Preference Program connects unemployed or underemployed residents with good-paying jobs. Northwestern Mutual has committed to improving the lives of families in

southeastern Wisconsin through its employee volunteer efforts and Northwestern Mutual Foundation giving. Our participation in RPP is just another example of our leadership in strengthening our hometown community.

TABLE 5: RPP PARTICIPATION LEVEL

Start of Project through Sept. 30, 2014

TOTAL CONSTRUCTION HOURS		77,075	
	GOAL	ACTUAL	STATUS
RPP Participation Percentage	40.0%	45.0%	+ 5.0
RPP Construction Hours	30,830	34,655	+ 3,825



CONTRACT HOURS WORKED

RPP construction hours worked represent 45.0% of all construction hours through September 30, 2014.

RPP participation is 3,825 hours, or 5 percentage points, ahead of goal.

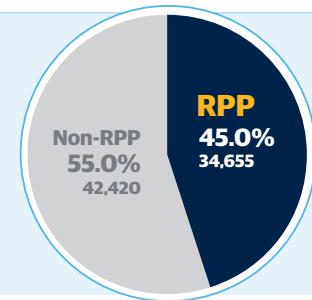


TABLE 6: RPP PARTICIPATION – EXCLUDING NON-WISCONSIN RESIDENTS

Start of Project through Sept. 30, 2014

TOTAL CONSTRUCTION HOURS WORKED		77,075	
Less Hours Worked by Non-Wisconsin Residents			(5,466)
Construction Hours Worked by Wisconsin Residents Only			71,609
RPP Construction Hours			34,655
RPP Participation Percentage (excluding non-Wisconsin residents)			48.4%

If the number of non-Wisconsin resident hours is subtracted from the total number of hours worked, RPP participation increases to 48.4 percent. While we are reporting 45.0 percent participation for the third quarter of 2014, 48.4 percent aligns with the City's requirement.

Milwaukee Code of Ordinances (MCO) Section 355-7(1)(a) notes that for the purpose of calculating RPP participation "... 'worker hours'... excludes the number of hours of work performed by all non-Wisconsin residents."

TABLE 7: RPP PARTICIPATION BY CONTRACTOR

CONTRACTOR	TRADE	ONSITE CONSTRUCTION HOURS THROUGH 9/30/14			
		Projected RPP%	Total Hours	RPP Hours	RPP%
APW	Acoustic Screen Wall	40.0%	387.8	167.8	43.3%
Arrow-Crete Construction LLC	Concrete	66.7%	513.8	249.5	48.6%
Bohmann & Vick Inc.	Plumbing	39.3%	333.0	0.0	0.0%
Brand Energy Services	Specialty Services	0.0%	4,304.0	1,489.0	34.6%
C. Lashell Trucking	Trucking	0.0%	23.8	0.0	0.0%
C. Lashell Trucking	Trucking	0.0%	19.0	0.0	0.0%
C. G. Schmidt Inc.	General Contractor / Demo	20.0%	1,048.0	457.5	43.7%
Chilstrom Erecting Corp.	CIP Concrete	0.0%	61.0	54.5	89.3%
Chilstrom Erecting Corp.	Erecting	0.0%	44.0	16.0	36.4%
Clean Cut Tree Service, Inc.	Landscaping	0.0%	64.0	0.0	0.0%
Con-Cor Co. Inc.	Electrical	0.0%	71.5	0.0	0.0%
Con-Cor Co. Inc.	Sawing	50.0%	43.8	27.3	62.3%
Con-Cor Co. Inc.	Electrical	100.0%	23.3	0.0	0.0%
Con-Cor Co. Inc.	Concrete Cutting	0.0%	23.3	0.0	0.0%
Dairyland Electric Co. Inc.	Electrical	0.0%	464.0	464.0	100.0%
Dairyland Electric Co. Inc.	Electrical	100.0%	233.0	233.0	100.0%
Dnesco Electric Inc.	Electrical	0.0%	78.0	0.0	0.0%
Duwe Metals Products Inc.	Acoustic Screen Wall	0.0%	16.0	0.0	0.0%
EKG Trucking LLC	Permits/Trucking	70.0%	1,807.5	1,807.5	100.0%
Elite Environmental Service	Tank Cleaning	0.0%	12.3	0.0	0.0%
Faust Co. Inc.	Utility Disconnects	0.0%	118.0	36.0	30.5%
Flores Contracting	Erosion Control	0.0%	10.0	0.0	0.0%
Gilbane C.G. Schmidt Inc.	General Contractor	40.2%	902.0	598.0	66.3%
Globe Contractors Inc.	General Contractor	15.0%	4,997.5	1,672.0	33.5%
Greg Rouse Trucking	Trucking	0.0%	33.8	31.0	91.7%
Greg Rouse Trucking	Trucking	0.0%	443.8	379.3	85.5%
GRO Horticultural Enterprises	Landscaping	0.0%	182.3	0.0	0.0%
Grunau Co.	Plumbing	40.0%	341.5	128.0	37.5%
Hawk Construction LLC	Foundations / Helical Piers	0.0%	161.8	0.0	0.0%
Hetzel Tile & Marble	Tile/Terrazzo	33.3%	369.0	131.0	35.5%
Hetzel-Sanfillippo Inc.	Mock-Up	42.6%	220.0	85.0	38.6%
High Voltage Maintenance	Electrical	0.0%	73.5	0.0	0.0%
Integrity Environmental	Asbestos Abatement	80.9%	2,544.5	2,175.5	85.5%
J & J Contracting LLC	Waste Removal	40.0%	683.0	451.0	66.0%

(CONTINUED ON PAGE 24)

TABLE 7: RPP PARTICIPATION BY CONTRACTOR (CONTINUED)

CONTRACTOR	TRADE	ONSITE CONSTRUCTION HOURS THROUGH 9/30/14			
		Projected RPP%	Total Hours	RPP Hours	RPP%
J.F. Ahern Co.	Mechanical / Plumbing	40.8%	2,614.7	722.5	27.6%
J.T. Farina Enterprises LLC	Trucking	0.0%	733.3	395.5	53.9%
J.T. Farina Enterprises LLC	Trucking	0.0%	58.8	47.0	79.9%
KMI Construction LLC	Masonry	0.0%	52.0	0.0	0.0%
Marek Landscaping LLC	Erosion Control	44.6%	22.5	0.0	0.0%
Marshall Erecting	Electrical	0.0%	71.0	19.5	27.5%
McDowell Construction Corp.	Fencing	0.0%	196.0	177.0	90.3%
McDowell Construction Corp.	Asphalt	66.7%	370.0	260.0	70.3%
Midwest Drill Foundation	Helical Piers	50.0%	242.0	118.5	49.0%
Munson Inc.	Fencing	0.0%	377.5	58.0	15.4%
Munson Inc.	Fencing	0.0%	69.0	0.0	0.0%
Natural Athletic Turf LLC	Hardscape Restoration	45.6%	438.3	94.3	21.5%
New Berlin Grading	Excavating	50.0%	181.5	89.5	49.3%
Northway Fencing Inc.	Fencing	0.0%	24.0	16.0	66.7%
Precise Excavating LLC	Operating Engineer	0.0%	110.0	0.0	0.0%
Rams Contracting Ltd.	Trucking	0.0%	172.8	126.3	73.1%
Renegade Trucking LLC	Trucking	0.0%	489.8	489.8	100.0%
Renegade Trucking LLC	Trucking	0.0%	77.0	77.0	100.0%
Reynolds Rigging & Crane Service Inc.	Crane Rental	0.0%	1,808.9	0.0	0.0%
Rockwell Mechanical LLC	Mechanical / Plumbing	0.0%	119.0	119.0	100.0%
Schlarb Contractors	Trucking	0.0%	2,021.3	530.3	26.2%
Schlarb Contractors	Trucking	0.0%	178.3	53.0	29.7%
Security Officer Services	Security	0.0%	1,346.0	480.0	35.7%
Smithsonian Materials	Trucking	0.0%	80.8	80.8	100.0%
Smithsonian Materials	Trucking	0.0%	14.0	14.0	100.0%
Staff Electric Co. Inc.	Electrical	50.0%	437.5	287.0	65.6%
Staff Electric Co. Inc.	Electrical	40.8%	5,038.5	2,072.0	41.1%
Staff Electric Co. Inc.	Electrical	70.5%	722.5	331.5	45.9%
Stano Landscaping Inc.	Hardscape Restoration	0.0%	20.3	0.0	0.0%
State Painting Co.	Painting	0.0%	160.0	0.0	0.0%
Terra Engineering Ltd.	Sheeting	0.0%	3,459.5	491.5	14.2%
Titan Building Company	Carpenter	0.0%	551.0	130.5	23.7%
Tom's Truck Service	Trucking	0.0%	45.5	45.5	100.0%

(CONTINUED ON PAGE 25)

TABLE 7: RPP PARTICIPATION BY CONTRACTOR (CONTINUED)

CONTRACTOR	TRADE	ONSITE CONSTRUCTION HOURS THROUGH 9/30/14			
		Projected RPP%	Total Hours	RPP Hours	RPP%
Tom's Truck Service	Trucking	0.0%	306.3	306.3	100.0%
Treescares Inc.	Landscaping	0.0%	8.8	0.0	0.0%
USA Fire Protection	Fire Protection	39.8%	64.0	0.0	0.0%
Valente Transport Inc.	Trucking	0.0%	39.8	27.0	67.8%
Valente Transport Inc.	Trucking Disposal	0.0%	838.8	630.8	75.2%
Vandalae Services Inc.	Trucking	0.0%	43.0	0.0	0.0%
Veit & Company Inc.	General Contractor	40.0%	29,679.5	13,812.5	46.5%
Veit & Company Inc.	Earthwork	39.3%	1,753.5	898.5	51.2%
Veteran's Truck Line Inc.	Trucking	0.0%	63.0	0.0	0.0%
Vizcaino's Trucking LLC	Trucking	90.0%	1,063.5	1,000.8	94.1%
Zien Service Inc.	Mechanical	0.0%	260.0	0.0	0.0%
PROJECT TOTALS		40.0%	77,075	34,655	45.0%

Brandon Bell, a C. G. Schmidt carpenter apprentice, has been on the Northwestern Mutual Tower and Commons project since summer 2014. He has worked on demolition, preparations for the new building and carpentry. Brandon looks forward to becoming a master carpenter and foreman, noting that his work on major construction projects will ensure that he has the knowledge and skill to complete tasks independently.

Previously employed in the sales industry, Brandon has always wanted to work in the construction trades. "Construction is a noble vocation and is in high demand," he said. "Using my mind and my hands are also beneficial life skills."

While the work is challenging, Brandon believes that more people would go into construction if they knew the entry requirements were less demanding than they might think. "If the opportunities were marketed and promoted more, more people like myself would be in the field," he said.

Brandon's motivation, attitude and RPP certification have helped him land work on a variety of projects, but he's extremely proud to be working on the landmark Northwestern Mutual Tower and Commons. "It gives me bragging rights!" he said.



TABLE 8: RPP PARTICIPATION BY TRADE

TRADE	NUMBER OF RPP WORKERS	ZIP CODE	TOTAL RPP HOURS THROUGH 9/30/14
Asbestos Abatement Worker (13)	6	53204	723.0
	6	53215	1,145.5
	1	53234	307.0
Carpenter/Soft Floor Layer (8)	1	53207	93.5
	2	53208	155.5
	2	53215	282.3
	1	53218	48.0
	1	53219	65.0
	1	53222	197.0
Cement Mason/Concrete Finisher (3)	1	53207	47.0
	1	53222	102.5
	1	53224	31.5
Drywall Taper or Finisher (1)	1	53202	19.5
Electrician (12)	1	53202	40.0
	1	53204	123.0
	2	53206	624.0
	1	53207	73.0
	1	53212	57.0
	2	53219	1,434.0
	2	53220	247.0
	2	53221	789.5
Fence Erector (6)	4	53204	102.5
	1	53218	58.0
	1	53220	90.5
General Laborer (61)	1	53202	9.0
	8	53204	711.0
	1	53206	40.0
	10	53207	2,124.5
	1	53208	691.5
	3	53209	758.5
	2	53211	92.0
	3	53212	656.5
	1	53213	10.0
	6	53215	1,919.0
	3	53216	348.0
	6	53218	1,191.5

(CONTINUED ON PAGE 27)

TABLE 8: RPP PARTICIPATION BY TRADE (CONTINUED)

TRADE	NUMBER OF RPP WORKERS	ZIP CODE	TOTAL RPP HOURS THROUGH 9/30/14
General Laborer (continued)	3	53219	1,906.0
	1	53220	766.0
	3	53221	1,337.5
	1	53222	2.0
	1	53224	16.0
	5	53225	776.3
	2	53228	944.5
Heavy Equipment Operator (15)	1	53211	41.0
	2	53212	449.0
	1	53215	980.5
	1	53218	850.0
	2	53219	915.5
	2	53222	652.0
	2	53225	1,899.5
	2	53205	66.5
	2	53215	23.5
Landscaper (1)	1	53204	94.3
Pipefitter (3)	1	53207	54.5
	1	53216	586.0
	1	53225	16.0
Plumber (3)	1	53215	66.0
	1	53225	64.0
	1	53220	36.0
Security (3)	1	53206	14.7
	1	53208	63.5
	1	53216	401.8
Steamfitter (2)	1	53213	64.0
	1	53224	119.0
Truck Driver (41)	1	53204	18.8
	1	53207	356.5
	1	53209	124.0
	3	53210	236.0
	2	53214	57.3
	12	53215	1,877.3
	2	53218	236.0
	3	53219	695.6

(CONTINUED ON PAGE 28)

TABLE 8: RPP PARTICIPATION BY TRADE (CONTINUED)

TRADE	NUMBER OF RPP WORKERS	ZIP CODE	TOTAL RPP HOURS THROUGH 9/30/14
Truck Driver (continued)	5	53221	309.5
	3	53222	229.5
	6	53223	1,408.5
	2	53224	493.0
TOTALS	172		34,655

SECTION 5

APPRENTICESHIP PROGRAM

We are committed to helping Milwaukee residents get a jump-start in their careers.

Apprenticeship Participation

Northwestern Mutual includes apprenticeship requirements in its construction contracts. Apprenticeships combine classroom instruction with on-the-job learning while working on construction projects under the supervision of experienced journey workers. The availability of construction apprenticeships

varies by trade, employer and market fluctuations. Contractors on The Tower and Commons project are asked to maximize the number of apprentices utilized in accordance with guidelines issued by the Wisconsin Department of Workforce Development.

TABLE 9: APPRENTICESHIP STATUS

TRADE	JOURNEYMEN	APPRENTICES	UNION LOCAL NO.
Asbestos Abatement Worker	16.0	0.0	113
Bricklayer	3.0	0.0	8
Carpenter	18.0	1.0	161
Carpenter & Soft Floor Layer	25.0	2.0	161
Cement Finisher	4.0	1.0	599
Cement Mason/Concrete Finisher	13.0	2.0	599
Drywall Taper or Finisher	6.0	0.0	7
Electrician	43.0	0.0	494
Fence Erector	14.0	0.0	8
General Laborer	150.0	2.0	113
Heavy Equipment Operator	79.0	6.0	139
Ironworker	16.0	2.0	8
Landscaper	20.0	0.0	113
Millwright	4.0	1.0	1056
Painter	3.0	0.0	7
Piledriver	5.0	0.0	2337
Pipefitter	18.0	5.0	183
Plumber	14.0	4.0	75
Sheet Metal Worker	6.0	1.0	18
Sprinkler Fitter	3.0	0.0	183
Steamfitter	5.0	1.0	601
Truck Driver	86.0	0.0	200
TOTALS	551.0	28.0	

