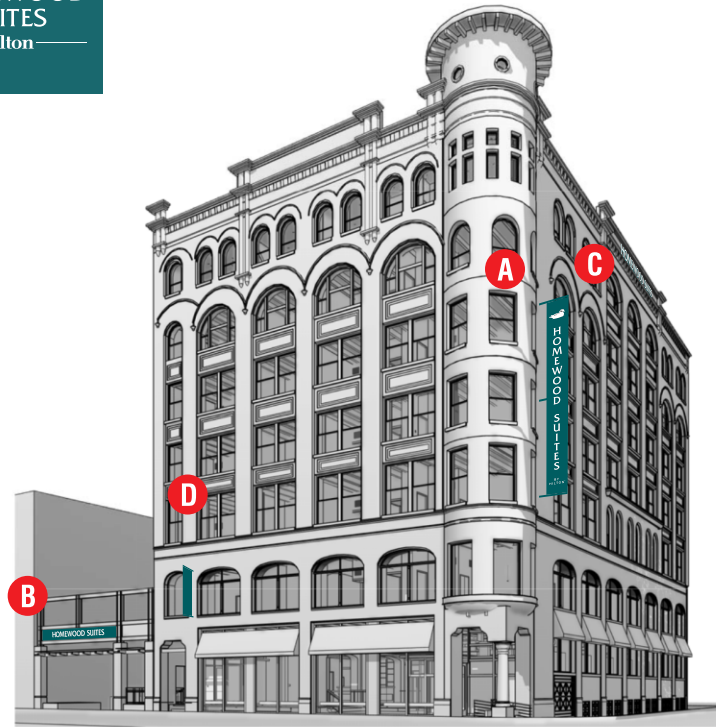
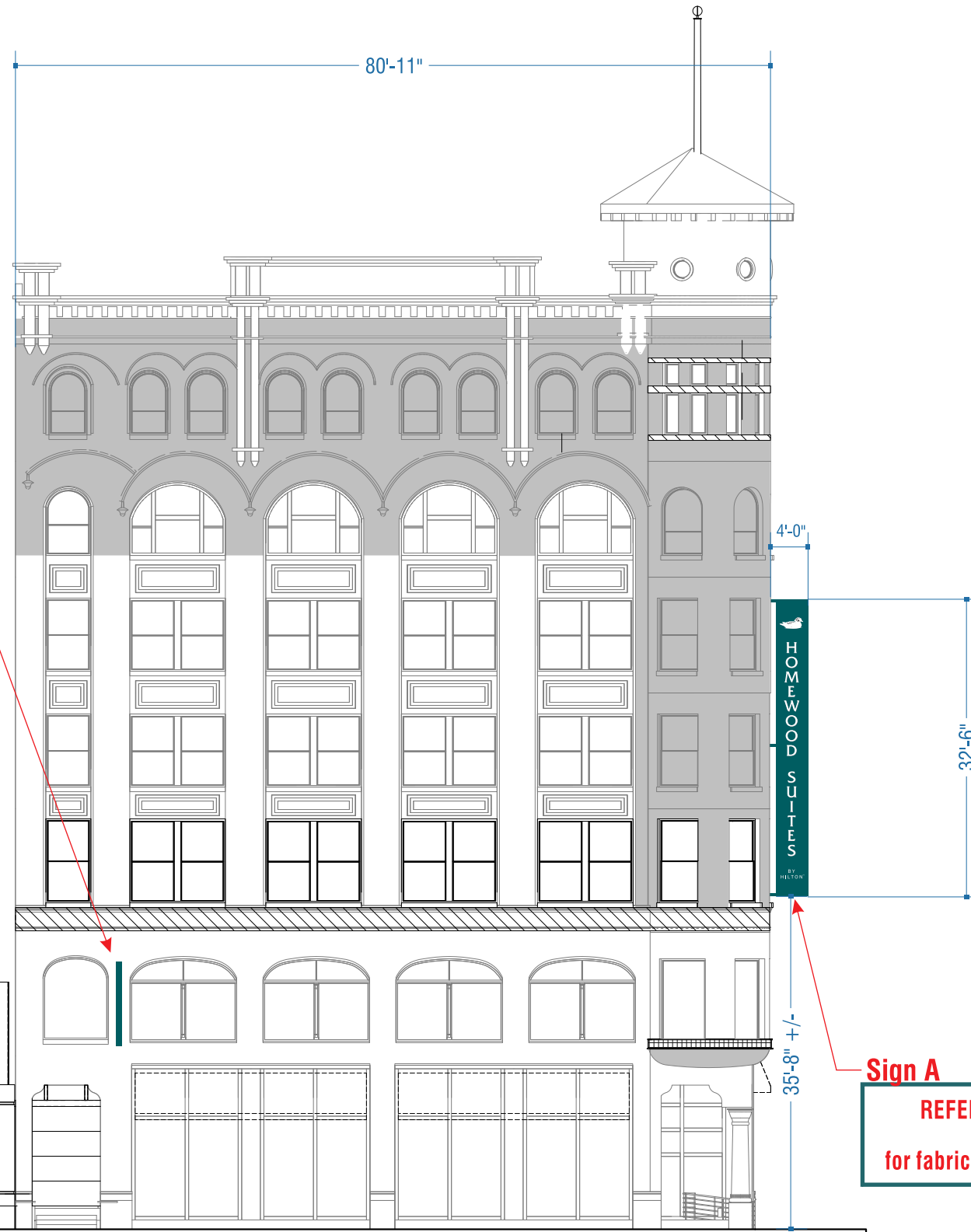




SITE IDENTIFICATION



VIEW FACING NORTHEAST



Sign D
REFERENCE DRAWING #B70977F
 for fabrication & color details.

Sign A
REFERENCE DRAWING #B70977C
 for fabrication & color details.

NOTE:
PRELIMINARY ONLY!!

ADDITIONAL DETAILS REQUIRED FOR "DRIVE THRU" STRUCTURE PRIOR TO MFG!!

Sign B
REFERENCE DRAWING #B70977D
 for fabrication & color details.

WEST ELEVATION

SCALE: 1/16" = 1'-0"

Milwaukee, WI



THIS IS AN ORIGINAL UNPUBLISHED DRAWING SUBMITTED FOR USE IN CONNECTION WITH A PROJECT BEING PLANNED FOR YOU BY KIEFFER & CO., INC. IT IS NOT TO BE REPRODUCED, COPIED OR EXHIBITED IN ANY FASHION WITHOUT THE WRITTEN PERMISSION OF KIEFFER & CO., INC.

© 2016 KIEFFER & CO., INC.

585 Bond Street - Lincolnshire, IL 60069
 PHONE: (847) 520-1255 FAX: (847) 520-1543
www.kieffersigns.com

CUSTOMER: Homewood Suites

LOCATION: Milwaukee, WI

SALESMAN: L. Jones

DESIGNER: MSO

DATE: 05/02/16

- Artwork
 - Design
 - Survey
- All boxes checked to Enter Order



COMPANION FILES

PRODUCTION PROCESSING

Kieffer Item #	Job #
-001	
-002	
-003	
-004	

REVISION:	INITIALS:	DATE:
A	MSO	6/27/16
B	MSO	9/6/16
C	MSO	3/8/17
D	MSO	3/28/17
E	MSO	4/26/17
F		
G		
H		
I		
J		

- A Rev ltrs to cab w/ push thru
- B Revisions per survey
- C Rev black bckgd to teal
- D Rev Sign Box to Halo Ltrs
- E Push Thru option out. Rev Channel (Halo) back.
- F
- G
- H
- I
- J

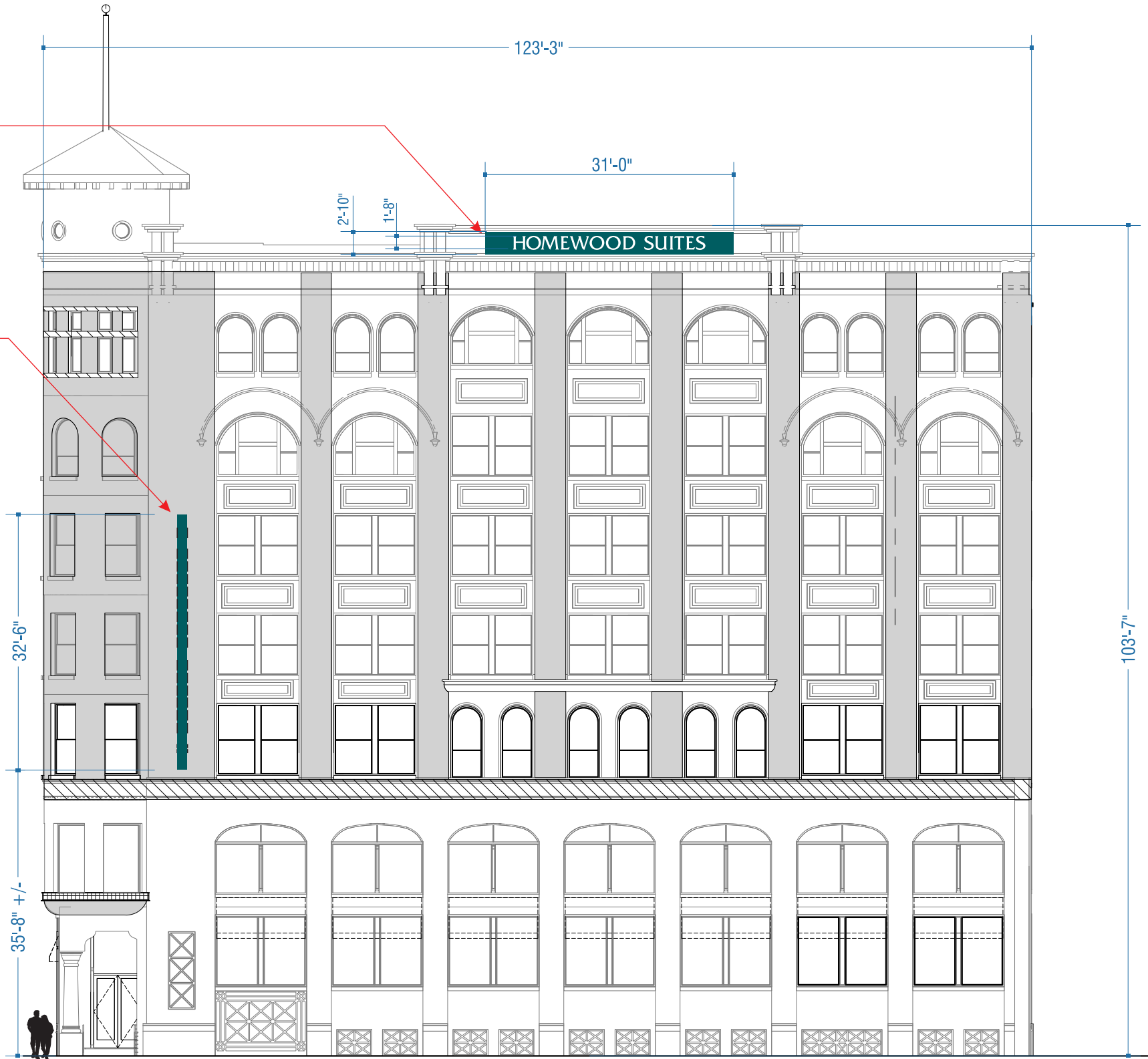
B70977



SITE IDENTIFICATION

Sign C
REFERENCE DRAWING #B70977E
 for fabrication & color details.

Sign A
REFERENCE DRAWING #B70977C
 for fabrication & color details.



SOUTH ELEVATION

SCALE: 1/16"=1'-0"

Milwaukee, WI



THIS IS AN ORIGINAL UNPUBLISHED DRAWING SUBMITTED FOR USE IN CONNECTION WITH A PROJECT BEING PLANNED FOR YOU BY KIEFFER & CO., INC. IT IS NOT TO BE REPRODUCED, COPIED OR EXHIBITED IN ANY FASHION WITHOUT THE WRITTEN PERMISSION OF KIEFFER & CO., INC.

© 2016 KIEFFER & CO., INC.

585 Bond Street - Lincolnshire, IL 60069
 PHONE: (847) 520-1255 FAX: (847) 520-1543
www.kieffersigns.com

CUSTOMER: Homewood Suites
 LOCATION: Milwaukee, WI
 SALESMAN: L. Jones
 DESIGNER: MSO
 DATE: 05/02/16

- Artwork
 - Design
 - Survey
- All boxes checked to Enter Order



COMPANION FILES

PRODUCTION PROCESSING

Kieffer Item #	Job #
-001	
-002	
-003	
-004	

REVISION:	INITIALS:	DATE:
A	MSO	6/27/16
B	MSO	7/8/16
C	MSO	9/6/16
D	MSO	3/8/17
E	MSO	3/28/17
F	MSO	4/26/17
G		
H		
I		
J		

A Rev ltrs to cab w/ push thru
 B Reduce Sign C by 25%
 C Revisions per survey
 D Rev black backgd to teal
 E Rev Sign Box to Halo Ltrs
 F Push Thru option out. Rev Channel (Halo) back.
 G
 H
 I
 J

B70977A



SITE IDENTIFICATION



Sign D
REFERENCE DRAWING
#B70977F
for fabrication & color details.



MOUNTING PLATES
 MUST ATTACH
 IN AREA BETWEEN BLOCKS

NORTH ELEVATION

SCALE: 1/16" = 1'-0"

Milwaukee, WI



THIS IS AN ORIGINAL UNPUBLISHED DRAWING SUBMITTED FOR USE IN CONNECTION WITH A PROJECT BEING PLANNED FOR YOU BY KIEFFER & CO., INC. IT IS NOT TO BE REPRODUCED, COPIED OR EXHIBITED IN ANY FASHION WITHOUT THE WRITTEN PERMISSION OF KIEFFER & CO., INC.

© 2016 KIEFFER & CO., INC.
 585 Bond Street - Lincolnshire, IL 60069
 PHONE: (847) 520-1255 FAX: (847) 520-1543
www.kieffersigns.com

CUSTOMER: Homewood Suites
 LOCATION: Milwaukee, WI
 SALESMAN: L. Jones
 DESIGNER: MSO
 DATE: 05/02/16

- Artwork
 - Design
 - Survey
- All boxes checked to Enter Order



COMPANION FILES

PRODUCTION PROCESSING

Kieffer Item #	
Job #	
-001	
-002	
-003	
-004	

REVISION:	INITIALS:	DATE:
A	MSO	6/27/16
B	MSO	9/6/16
C	MSO	3/8/17
D	MSO	3/28/17
E	MSO	4/26/17
F	MSO	5/9/17
G		
H		
I		
J		

- A Rev ltrs to cab w/ push thru
- B Revisions per survey
- C Rev black backgd to teal
- D Rev Sign Box to Halo Ltrs
- E Push Thru option out. Rev Channel (Halo) back.
- F Rev 9'-2" to 9'-0" for permit
- G
- H
- I
- J

B70977B



**CUSTOM D/F Projecting Wall Sign
w/ Halo Lit Channel Letters**
Sign A



THIS IS AN ORIGINAL UNPUBLISHED DRAWING SUBMITTED FOR USE IN CONNECTION WITH A PROJECT BEING PLANNED FOR YOU BY KIEFFER & CO., INC. IT IS NOT TO BE REPRODUCED, COPIED OR EXHIBITED IN ANY FASHION WITHOUT THE WRITTEN PERMISSION OF KIEFFER & CO., INC.

© 2016 KIEFFER & CO., INC.
585 Bond Street - Lincolnshire, IL 60069
PHONE: (847) 520-1255 FAX: (847) 520-1543
www.kieffersigns.com

CUSTOMER: Homewood Suites
LOCATION: Milwaukee, WI
SALESMAN: L. Jones
DESIGNER: MSO
DATE: 05/02/16

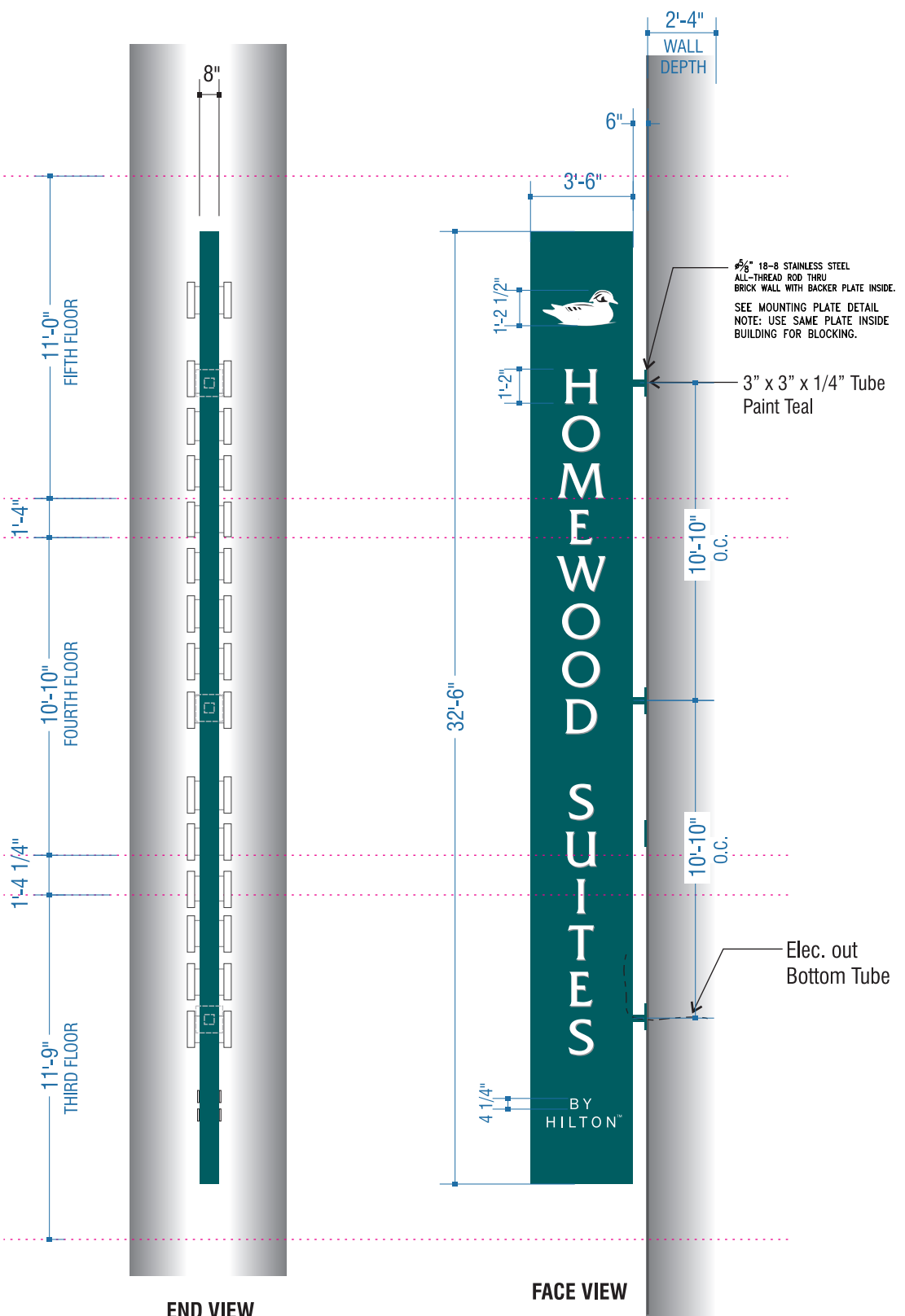
- Artwork
 - Design
 - Survey
- All boxes checked to Enter Order



COMPANION FILES

PRODUCTION PROCESSING
Kieffer Item # _____
Job # _____
-001 _____
-002 _____
-003 _____
-004 _____

REVISION:	INITIALS:	DATE:
A	MSO	6/27/16
B	MSO	9/6/16
C	MSO	3/8/17
D	MSO	3/15/17
E	MSO	3/23/17
F	MSO	3/28/17
G	MSO	4/26/17
H	MSO	5/9/17



D/F Projecting Wall Sign w/ Halo Lit Channel Letters

FABRICATED D/F SIGN CABINET. ALUMINUM FACE & FILLER.
PAINTED PMS 323C TEAL (SATIN FINISH).
NOTE: SIGN CABINET TO BE OF MINIMAL DEPTH

HOMEWOOD SUITES:
3" Deep Rev. Channel Letters.
White faces & returns
White L.E.D. Halo Illumination

DUCK LOGO:
3" Deep Rev. Channel Letters.
White faces & returns
White L.E.D. Halo Illumination
BLACK VINYL DETAIL FIRST SURFACE

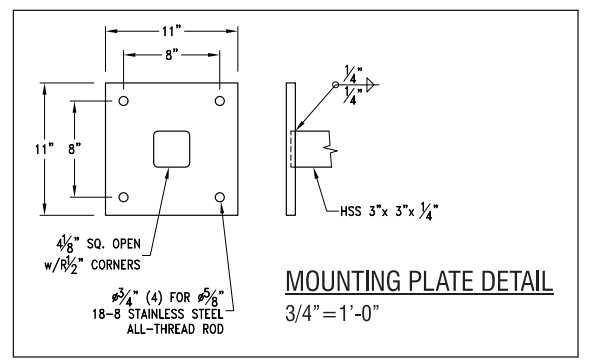
BY HILTON: 1/4" THICK FLAT CUT OUT ALUMINUM. LETTERS (NON-ILLUM)
PAINT WHITE

TM: (NON-ILLUM) WHITE VINYL APPLIED TO SIGN FACE

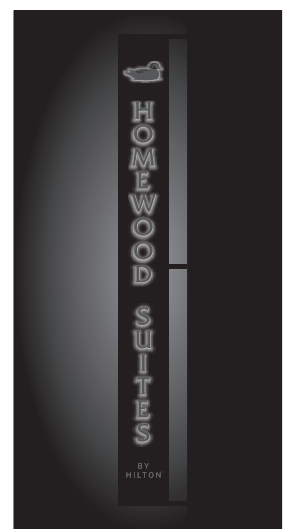
COLOR SPECIFICATIONS

PAINT SPECIFICATIONS

- (P1) PMS 323C TEAL (Satin Finish)
- (P2) WHITE (Satin Finish)



3/16" = 1'-0"



Sign A



Milwaukee, WI

B70977C



Background Panel w/ Halo Illuminated Channel Letters

Sign B



THIS IS AN ORIGINAL UNPUBLISHED DRAWING SUBMITTED FOR USE IN CONNECTION WITH A PROJECT BEING PLANNED FOR YOU BY KIEFFER & CO., INC. IT IS NOT TO BE REPRODUCED, COPIED OR EXHIBITED IN ANY FASHION WITHOUT THE WRITTEN PERMISSION OF KIEFFER & CO., INC.

© 2016 KIEFFER & CO., INC.
 585 Bond Street - Lincolnshire, IL 60069
 PHONE: (847) 520-1255 FAX: (847) 520-1543
 www.kieffersigns.com

CUSTOMER: Homewood Suites
 LOCATION: Milwaukee, WI
 SALESMAN: L. Jones
 DESIGNER: MSO
 DATE: 05/02/16

- Artwork
 - Design
 - Survey
- All boxes checked to Enter Order

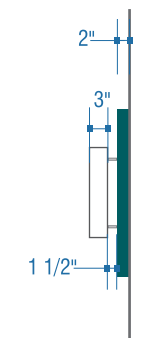
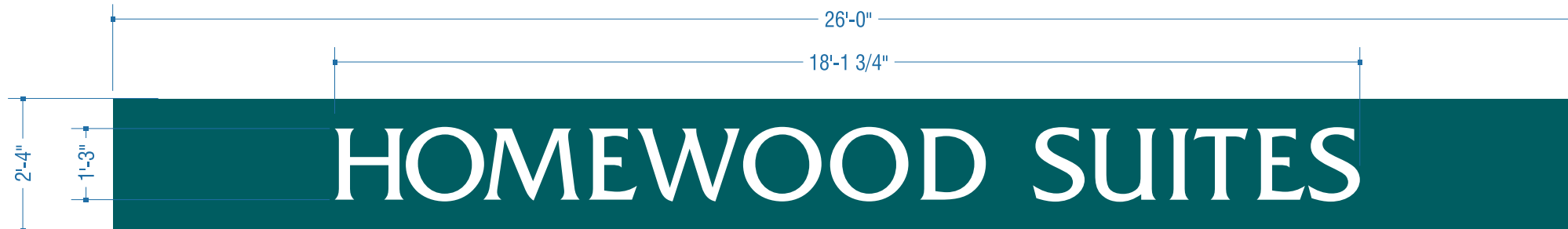


COMPANION FILES

PRODUCTION PROCESSING

Kieffer Item # _____
 Job # _____
 -001 _____
 -002 _____
 -003 _____
 -004 _____

REVISION:	INITIALS:	DATE:
A	MSO	6/27/16
B	MSO	7/8/16
C	MSO	9/6/16
D	MSO	3/8/17
E	MSO	3/28/17
F	MSO	4/26/17
G		
H		
I		
J		



PROFILE

Background Panel w/ Halo Illuminated Channel Letters

3/8" = 1'-0"

- ALUMINUM SIGN FACES & CABINET.
- PAINT PMS 323C TEAL (SATIN FINISH)
- COPY: REVERSE CHANNEL HALO LIT LETTERS
- WHITE LED ILLUMINATION
- WALL MOUNT FLUSH TO BRICK WALL W/ CONCEALED FASTENERS

COLOR SPECIFICATIONS

PAINT SPECIFICATIONS

- (P1) PMS 323C TEAL (Satin Finish)
- (P2) WHITE (Satin Finish)

NOTE:
PRELIMINARY ONLY!!

**ADDITIONAL DETAILS
 REQUIRED FOR "DRIVE THRU"
 STRUCTURE PRIOR TO MFG!!**

**General vertical letter section
 LED back lit letter mounted
 to back ground panel (Remote)**

(A) ILLUMINATION	LED / COLOR	WHITE
(B) POWER SUPPLY	TYPE	PER MANUF
(C) FACE	MATERIAL	.100 ALUMINUM
	COLOR	WHITE
(D) RETURN	MATERIAL	.063 ALUMINUM
	COLOR	WHITE
	DEPTH	3"
(E) BACK	MATERIAL	.150 POLYCARBONATE
	COLOR	2447 WHITE DIFFUSER
(F) MOUNTING	TYPE	ALUMINUM TUBE SPACER
	FASTENER	1/4-20NC THREADED ROD
(G) B/G PANEL	FACE	.100 ALUMINUM
	FRAME	2"x2"x1/8" ALUM. TUBE
	MOUNTING	RIVNUT/THREADED ROD
	COLOR	TEAL
(H) ELECTRICAL	TYPE	SEE COLOR SCHED.
	TYPE	PASS THRU
(I) SWITCH	TYPE	-
	LOCATION	DISCONNECT/TOGGLE BY ELECTRICIAN

*WEEP HOLE(S) PER MFG. STANDARDS
 *CAULK REQUIRED
 *UL LISTED PRODUCT - NO VISIBLE LABELS
 *ALL ELECTRICAL OUTS LOCATED FOR RACEWAY OR REMOTE APPLICATION



NIGHT VIEW

Milwaukee, WI

B70977D



Background Panel w/ Halo Illuminated Channel Letters

Sign C



THIS IS AN ORIGINAL UNPUBLISHED DRAWING SUBMITTED FOR USE IN CONNECTION WITH A PROJECT BEING PLANNED FOR YOU BY KIEFFER & CO., INC. IT IS NOT TO BE REPRODUCED, COPIED OR EXHIBITED IN ANY FASHION WITHOUT THE WRITTEN PERMISSION OF KIEFFER & CO., INC.

© 2016 KIEFFER & CO., INC.

585 Bond Street - Lincolnshire, IL 60069
 PHONE: (847) 520-1255 FAX: (847) 520-1543
 www.kieffersigns.com

CUSTOMER: Homewood Suites
 LOCATION: Milwaukee, WI
 SALESMAN: L. Jones
 DESIGNER: MSO
 DATE: 05/02/16

- Artwork
 - Design
 - Survey
- All boxes checked to Enter Order

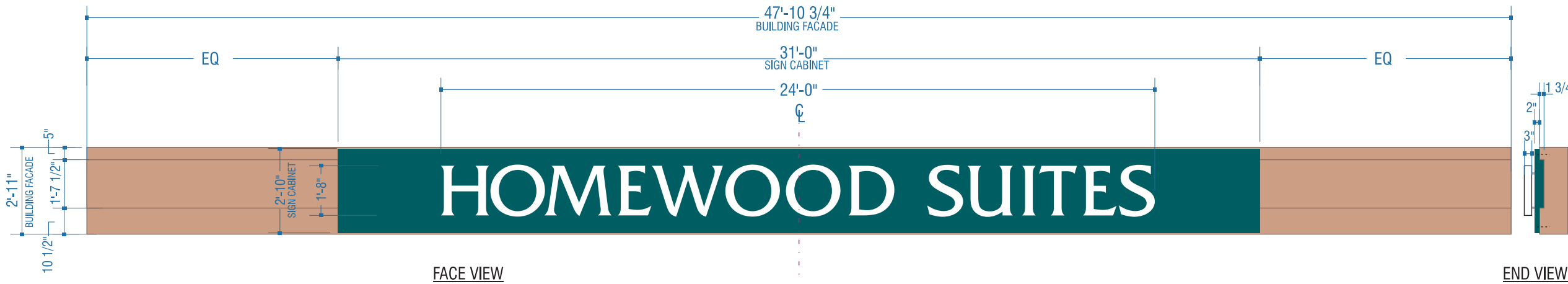


COMPANION FILES

PRODUCTION PROCESSING

Kieffer Item #	
Job #	
-001	
-002	
-003	
-004	

INITIALS:	MSO	MSO	MSO	MSO	MSO	MSO				
DATE:	6/27/16	7/8/16	9/6/16	3/8/17	3/28/17	4/26/17				
REVISION:	A Rev ltrs to cab w/ push thru	B Reduce Sign C by 25%	C Rev per Survey	D Rev black backgd to teal	E Rev Sign Box to Halo Ltrs	F Push Thru option out. Rev Channel (Halo) back.	G	H	I	J



1 3/4" ADDITIONAL FILLER FOR BUILDING INSET BOTH SIDES OF SIGN

Background Panel w/ Halo Illuminated Channel Letters

1/4" = 1'-0"

- ALUMINUM SIGN FACES & CABINET.
- PAINT PMS 323C TEAL (SATIN FINISH)
- COPY: REVERSE CHANNEL HALO LIT LETTERS
- WHITE LED ILLUMINATION
- WALL MOUNT FLUSH TO BRICK WALL W/ CONCEALED FASTENERS

COLOR SPECIFICATIONS

PAINT SPECIFICATIONS

- (P1) PMS 323C TEAL (Satin Finish)
- (P2) WHITE (Satin Finish)



NIGHT VIEW

General vertical letter section
LED back lit letter mounted to back ground panel (Remote)

(A) ILLUMINATION LED / COLOR	WHITE
(B) POWER SUPPLY TYPE	PER MANUF
(C) FACE	MATERIAL .100 ALUMINUM COLOR WHITE
(D) RETURN	MATERIAL .063 ALUMINUM COLOR WHITE DEPTH 3"
(E) BACK	MATERIAL .150 POLYCARBONATE COLOR 2447 WHITE DIFFUSER
(F) MOUNTING	TYPE ALUMINUM TUBE SPACER FASTENER 1/4-20NC THREADED ROD
(G) B/G PANEL	FACE .100 ALUMINUM FRAME 2"x2"x1/8" ALUM. TUBE MOUNTING RIVNUT/THREADED ROD COLOR TEAL
(H) ELECTRICAL	TYPE SEE COLOR SCHED. TYPE -
(I) SWITCH	TYPE DISCONNECT/TOGGLE LOCATION BY ELECTRICIAN

*WEEP HOLE(S) PER MFG. STANDARDS
 *CAULK REQUIRED
 *UL LISTED PRODUCT - NO VISIBLE LABELS
 *ALL ELECTRICAL OUTS LOCATED FOR RACEWAY OR REMOTE APPLICATION

Milwaukee, WI

B70977E



**CUSTOM D/F Projecting Wall Sign
w/ Halo Lit Channel Letters**
Sign D



THIS IS AN ORIGINAL UNPUBLISHED DRAWING SUBMITTED FOR USE IN CONNECTION WITH A PROJECT BEING PLANNED FOR YOU BY KIEFFER & CO., INC. IT IS NOT TO BE REPRODUCED, COPIED OR EXHIBITED IN ANY FASHION WITHOUT THE WRITTEN PERMISSION OF KIEFFER & CO., INC.

© 2016 KIEFFER & CO., INC.

585 Bond Street - Lincolnshire, IL 60069
PHONE: (847) 520-1255 FAX: (847) 520-1543
www.kieffersigns.com

CUSTOMER: Homewood Suites
LOCATION: Milwaukee, WI
SALESMAN: L. Jones
DESIGNER: MSO
DATE: 05/02/16

- Artwork
 - Design
 - Survey
- All boxes checked to Enter Order

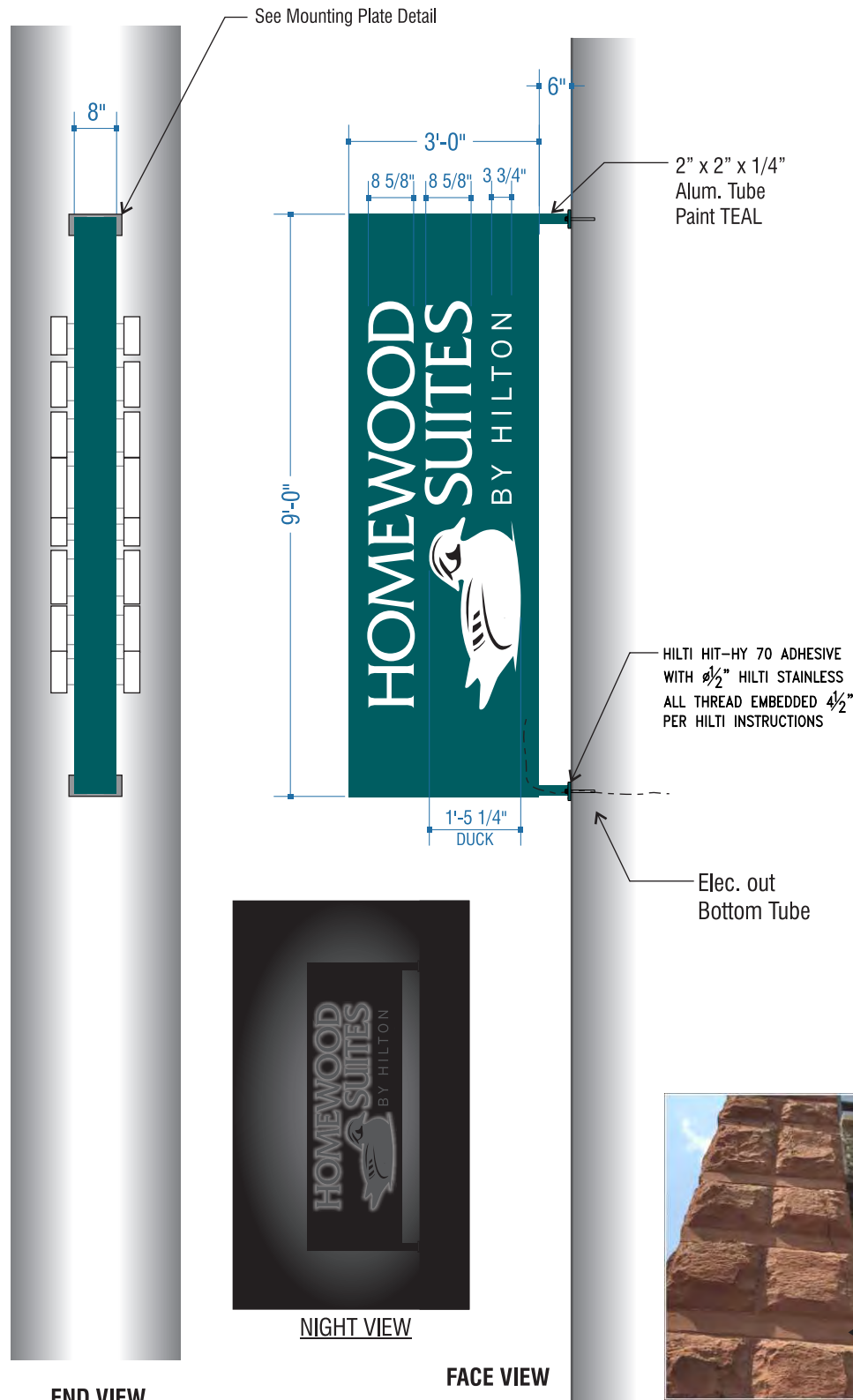


COMPANION FILES

PRODUCTION PROCESSING

Kieffer Item #	Job #
-001	
-002	
-003	
-004	

REVISION:	INITIALS:	DATE:
A	MSO	6/27/16
B	MSO	9/6/16
C	MSO	01/31/17
D	MSO	3/8/17
E	MSO	3/15/17
F	MSO	3/23/17
G	MSO	3/28/17
H	MSO	4/26/17
I	MSO	5/9/17
J		



D/F Projecting Wall Sign w/ Halo Lit Channel Letters

FABRICATED D/F SIGN CABINET. ALUMINUM FACE & FILLER. PAINTED TEAL (SATIN FINISH).
NOTE: SIGN CABINET TO BE OF MINIMAL DEPTH

HOMWOOD SUITES:
3" Deep Rev. Channel Letters.
White faces & returns
White L.E.D. Halo Illumination

DUCK LOGO:
3" Deep Rev. Channel Letters.
White faces & returns
White L.E.D. Halo Illumination
BLACK VINYL DETAIL FIRST SURFACE

BY HILTON: 1/4" THICK FLAT CUT OUT ALUMINUM. LETTERS (NON-ILLUM)
PAINT WHITE

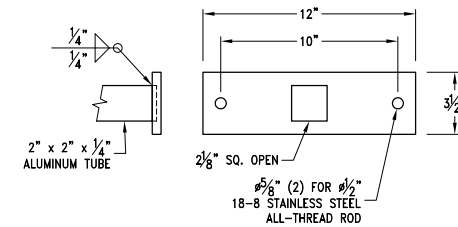
MOUNTING
S/S HILTI & EPOXY FASTENING SYSTEM

COLOR SPECIFICATIONS

PAINT SPECIFICATIONS

- (P1) PMS 323C TEAL (Satin Finish)
- (P2) WHITE (Satin Finish)

3/8" = 1'-0"



MOUNTING PLATE DETAIL



VIEW FACING NORTHEAST



Milwaukee, WI

B70977F P