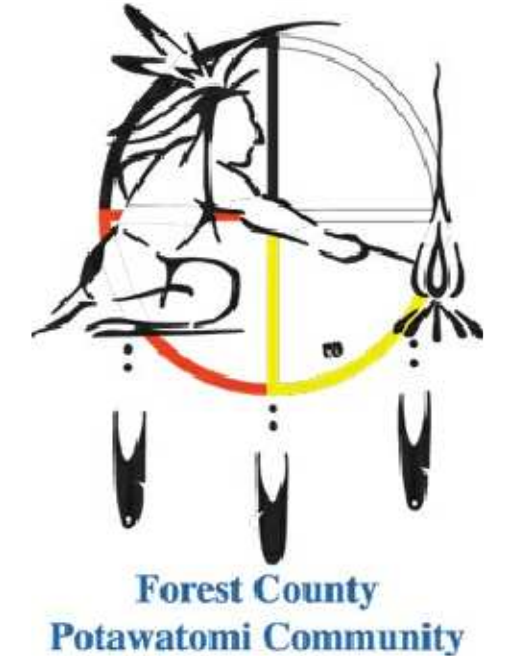


FOREST COUNTY POTAWATOMI LEGACY DISTRICT BIOGAS GENERATION FACILITY

2301 WEST CANAL STREET
MILWAUKEE, WISCONSIN

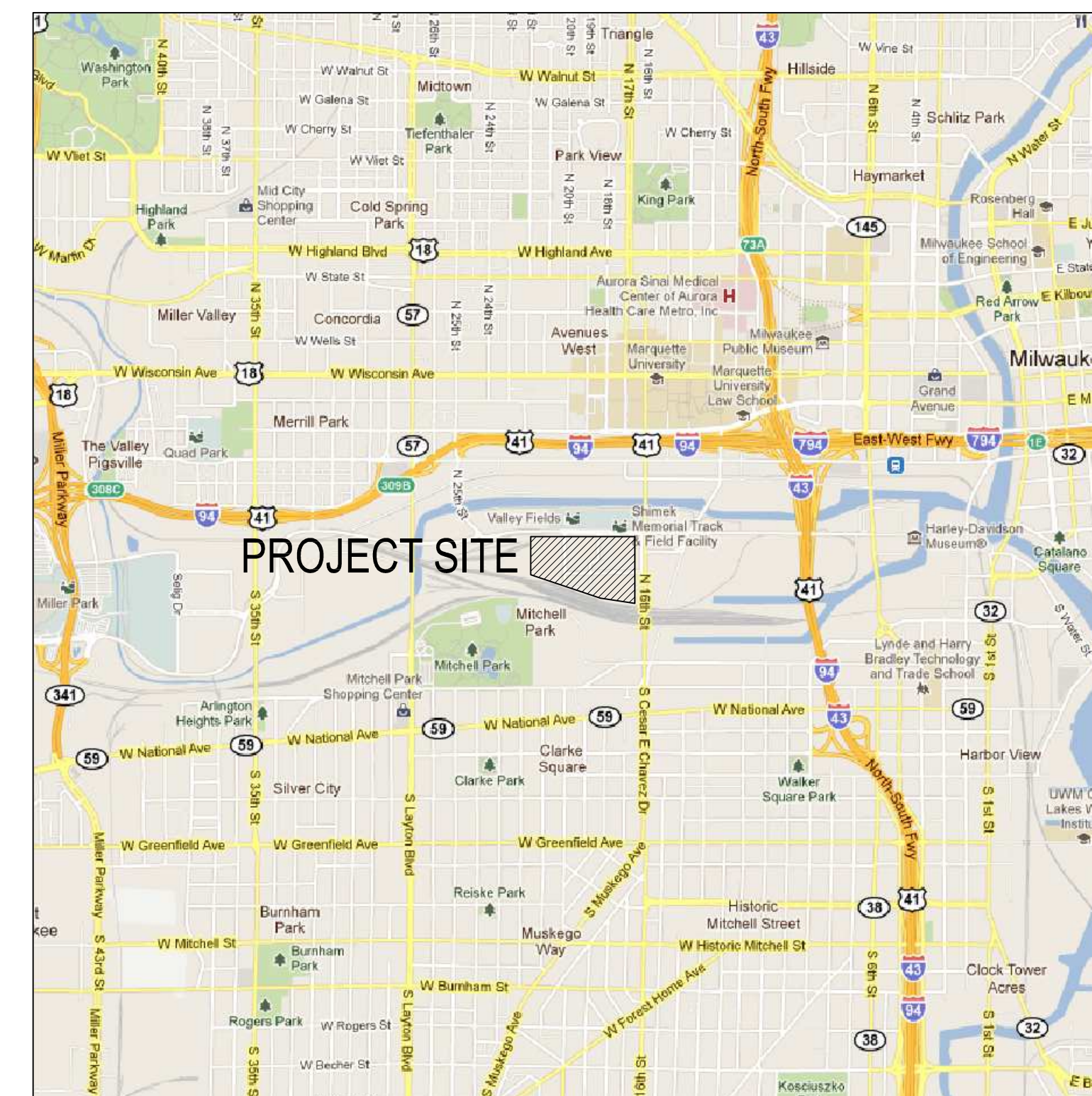
DETAILED PLAN DEVELOPMENT



PROJECT TITLE:
DETAIL PLAN DEVELOPMENT -
FOREST COUNTY POTAWATOMI
LEGACY DISTRICT BIOGAS
GENERATION FACILITY

ISSUE:
NO. DATE REVISIONS BY
1 12/1/2011 DPD-0, DPD-7 MDB

SHEET INDEX	
DPD-0	COVER SHEET / VICINITY MAP / PROJECT TEAM / SHEET INDEX
DPD-1	ALTA/ACSM LAND TITLE SURVEY
DPD-2	PROPOSED PROJECT BOUNDARY DESCRIPTION
DPD-3	EXISTING FACILITIES SITE PLAN
DPD-4	PROPOSED BUILDING AND PARKING SITE PLAN
DPD-5.1	PROPOSED UTILITY PLAN
DPD-5.2	PROPOSED UTILITY PLAN
DPD-6	PROPOSED GRADING PLAN
DPD-7	PROPOSED LANDSCAPE PLAN
DPD-8.1	PROPOSED BUILDING ELEVATIONS GENERATION FACILITY NORTH ELEVATION
DPD-8.2	PROPOSED BUILDING ELEVATIONS GENERATION FACILITY EAST AND WEST ELEVATIONS
DPD-8.3	PROPOSED BUILDING ELEVATIONS GENERATION FACILITY SOUTH ELEVATION
DPD-8.4	PROPOSED BUILDING ELEVATIONS DIGESTER TANK ALL DIRECTIONS
DPD-9	PROPOSED SIGNAGE AND DETAILS



VICINITY MAP

PROJECT INFORMATION:

DATE: 10-27-2011
PROJECT NUMBER: 2011-0078
CHECKED BY: DMM
APPROVED BY: JTM
SCALE: AS NOTED
FILE PATH:

SHEET TITLE:
COVER SHEET
VICINITY MAP

SHEET NUMBER:

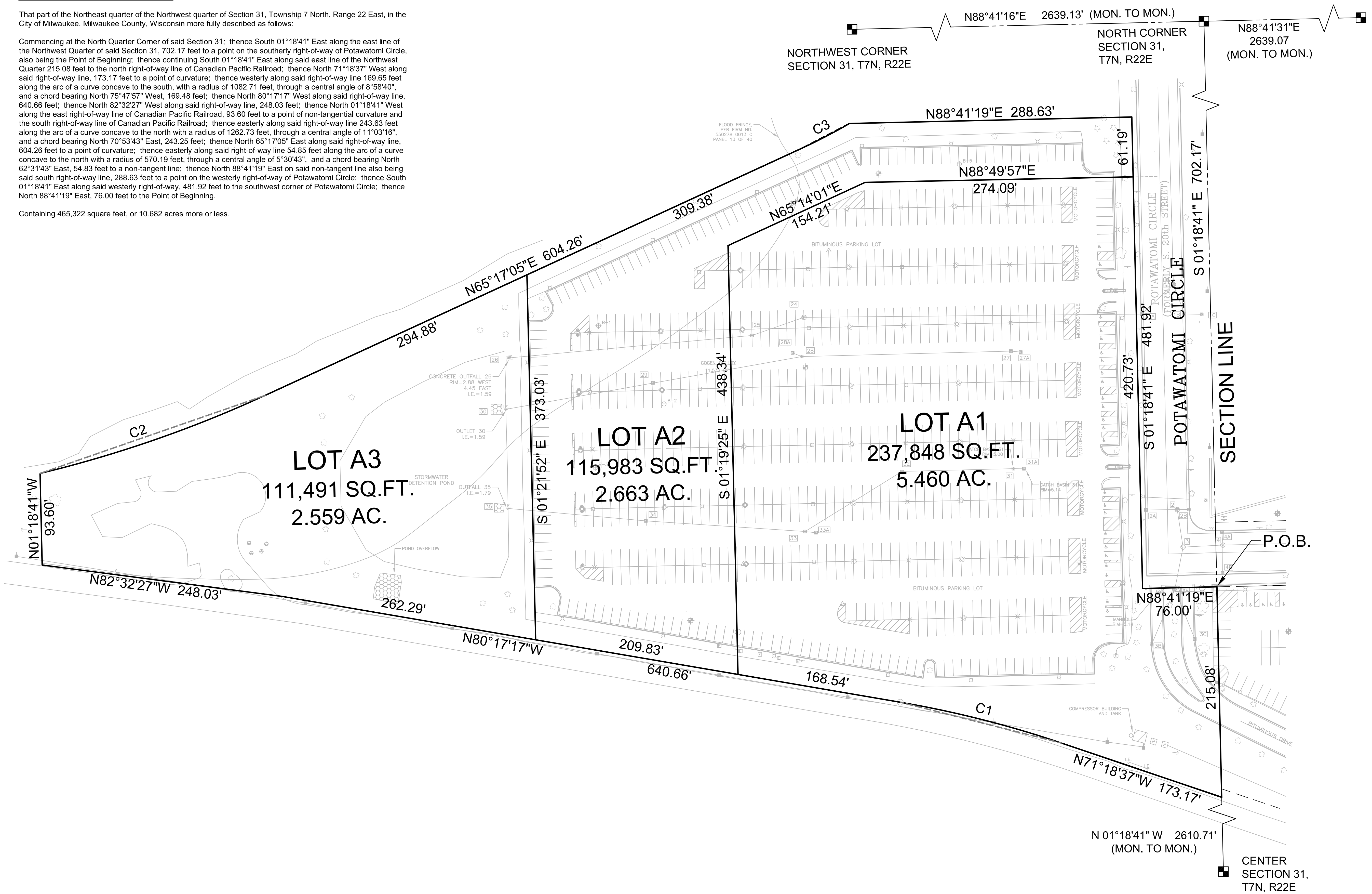
DPD-0

POTAWATOMI DPD LEGAL DESCRIPTION

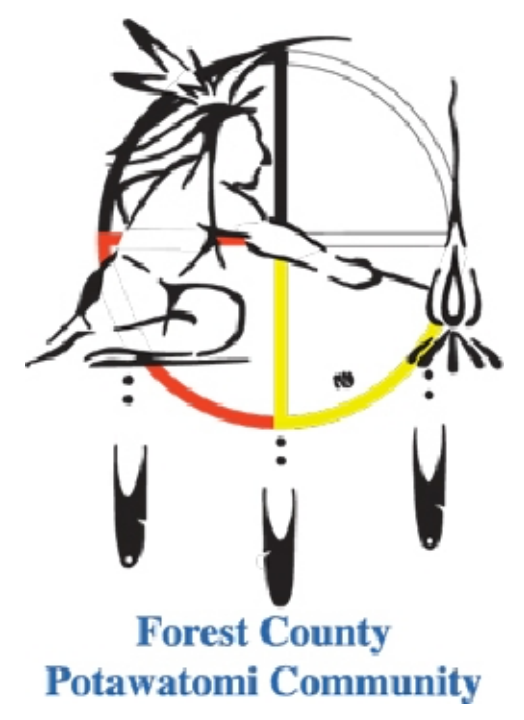
That part of the Northeast quarter of the Northwest quarter of Section 31, Township 7 North, Range 22 East, in the City of Milwaukee, Milwaukee County, Wisconsin more fully described as follows:

Commencing at the North Quarter Corner of said Section 31; thence South 01°18'41" East along the east line of the Northwest Quarter of said Section 31, 702.17 feet to a point on the southerly right-of-way of Potawatomi Circle, also being the Point of Beginning; thence continuing South 01°18'41" East along said east line of the Northwest Quarter 215.08 feet to the north right-of-way line of Canadian Pacific Railroad; thence North 71°18'37" West along said right-of-way line, 173.17 feet to a point of curvature; thence westerly along said right-of-way line 169.65 feet along the arc of a curve concave to the south, with a radius of 1082.71 feet, through a central angle of 8°58'40", and a chord bearing North 75°47'57" West, 169.48 feet; thence North 80°17'17" West along said right-of-way line, 640.66 feet; thence North 82°32'27" West along said right-of-way line, 248.03 feet; thence North 01°18'41" West along the east right-of-way line of Canadian Pacific Railroad, 93.60 feet to a point of non-tangential curvature and the south right-of-way line of Canadian Pacific Railroad; thence easterly along said right-of-way line 243.63 feet along the arc of a curve concave to the north with a radius of 1262.73 feet, through a central angle of 11°03'16", and a chord bearing North 70°53'43" East, 243.25 feet; thence North 65°17'05" East along said right-of-way line, 604.26 feet to a point of curvature; thence easterly along said right-of-way line 54.85 feet along the arc of a curve concave to the north with a radius of 570.19 feet, through a central angle of 5°30'43", and a chord bearing North 62°31'43" East, 54.83 feet to a non-tangent line; thence North 88°41'19" East on said non-tangent line also being said south right-of-way line, 288.63 feet to a point on the westerly right-of-way of Potawatomi Circle; thence South 01°18'41" East along said westerly right-of-way, 481.92 feet to the southwest corner of Potawatomi Circle; thence North 88°41'19" East, 76.00 feet to the Point of Beginning.

Containing 465,322 square feet, or 10.682 acres more or less.



CURVE TABLE					
CURVE	LENGTH	RADIUS	CENTRAL ANGLE	CHORD BEARING	CHORD
C1	169.65'	1082.71'	8°58'40"	N75°47'57"W	169.48'
C2	243.63'	1262.73'	11°03'16"	N70°53'43"E	243.25'
C3	54.85'	570.19'	5°30'43"	N62°31'43"E	54.83'



PROJECT TITLE:
 DETAIL PLAN DEVELOPMENT -
 FOREST COUNTY POTAWATOMI
 LEGACY DISTRICT BIOGAS
 GENERATION FACILITY

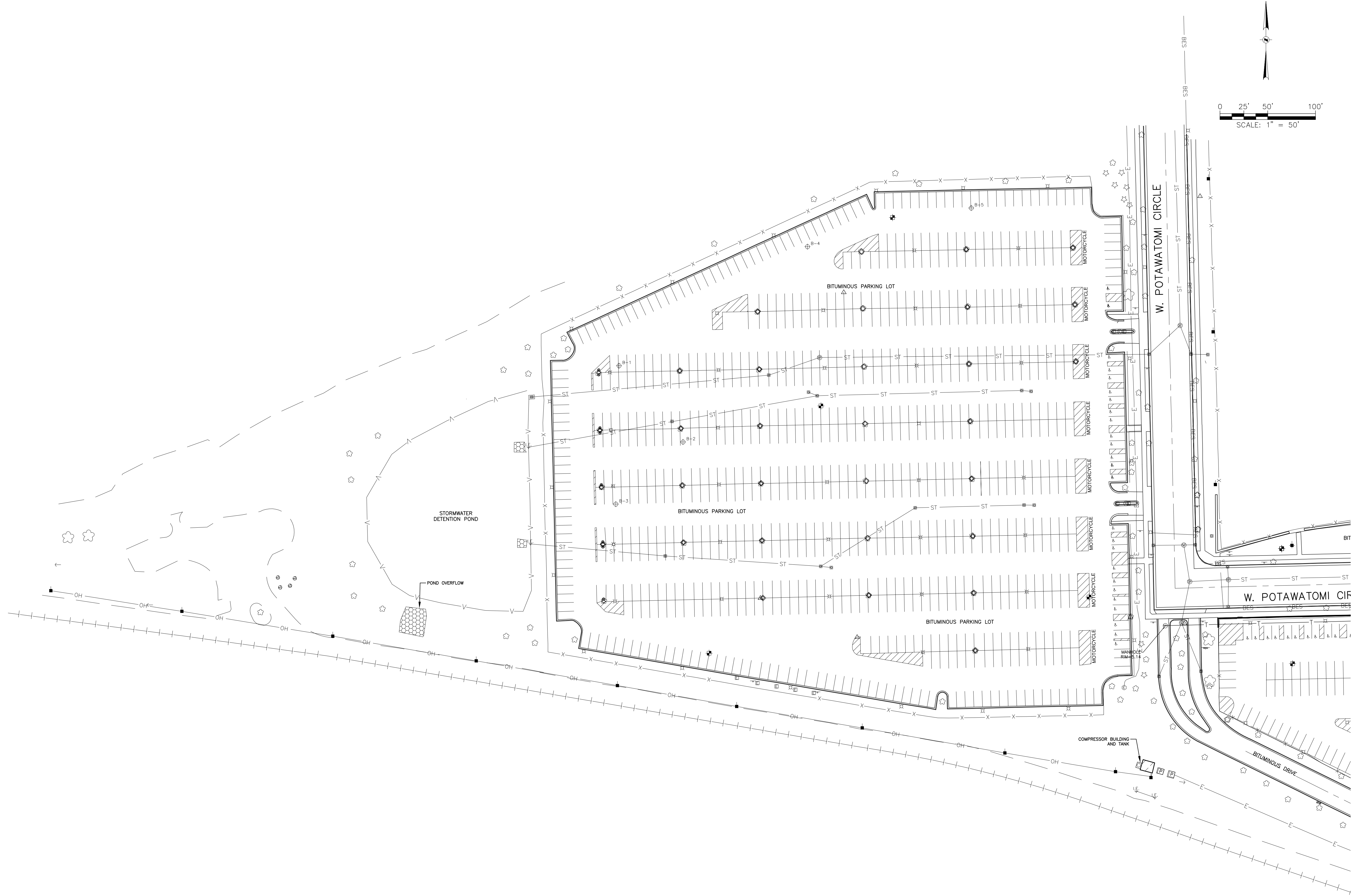
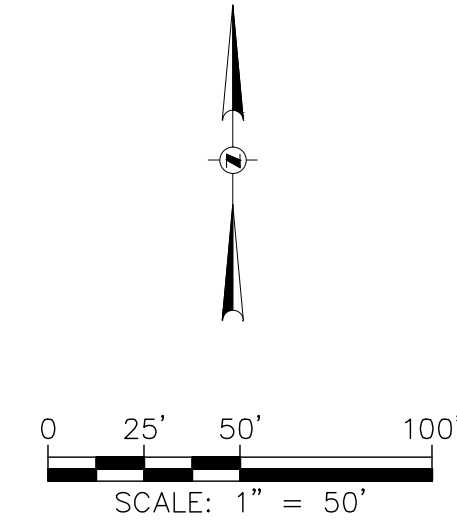
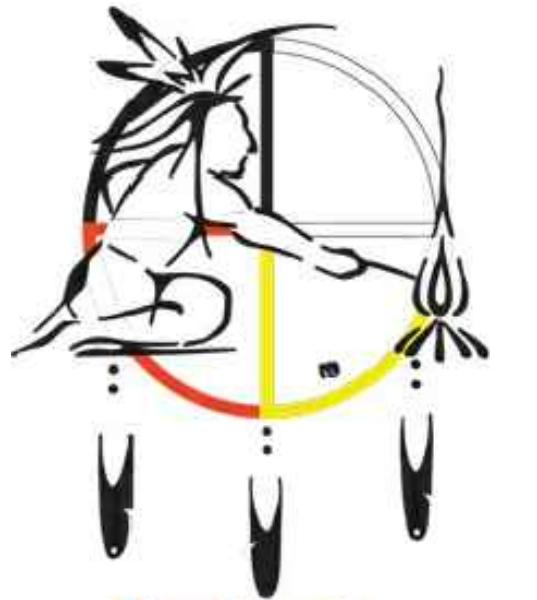
ISSUE:
 NO. DATE REVISIONS BY

PROJECT INFORMATION:
 DATE: 09-06-2011
 PROJECT NUMBER: 2011-0078
 CHECKED BY: DMM
 APPROVED BY: JTM
 SCALE: AS NOTED
 FILE PATH: G60221809-DPD.3

SHEET TITLE:
 PROPOSED PROJECT BOUNDARY
 DESCRIPTION

SHEET NUMBER:

DPD-2



PROJECT TITLE:

DETAIL PLAN DEVELOPMENT -
FOREST COUNTY POTAWATOMI
LEGACY DISTRICT BIOGAS
GENERATION FACILITY

ISSUE:

NO.	DATE	REVISIONS	BY

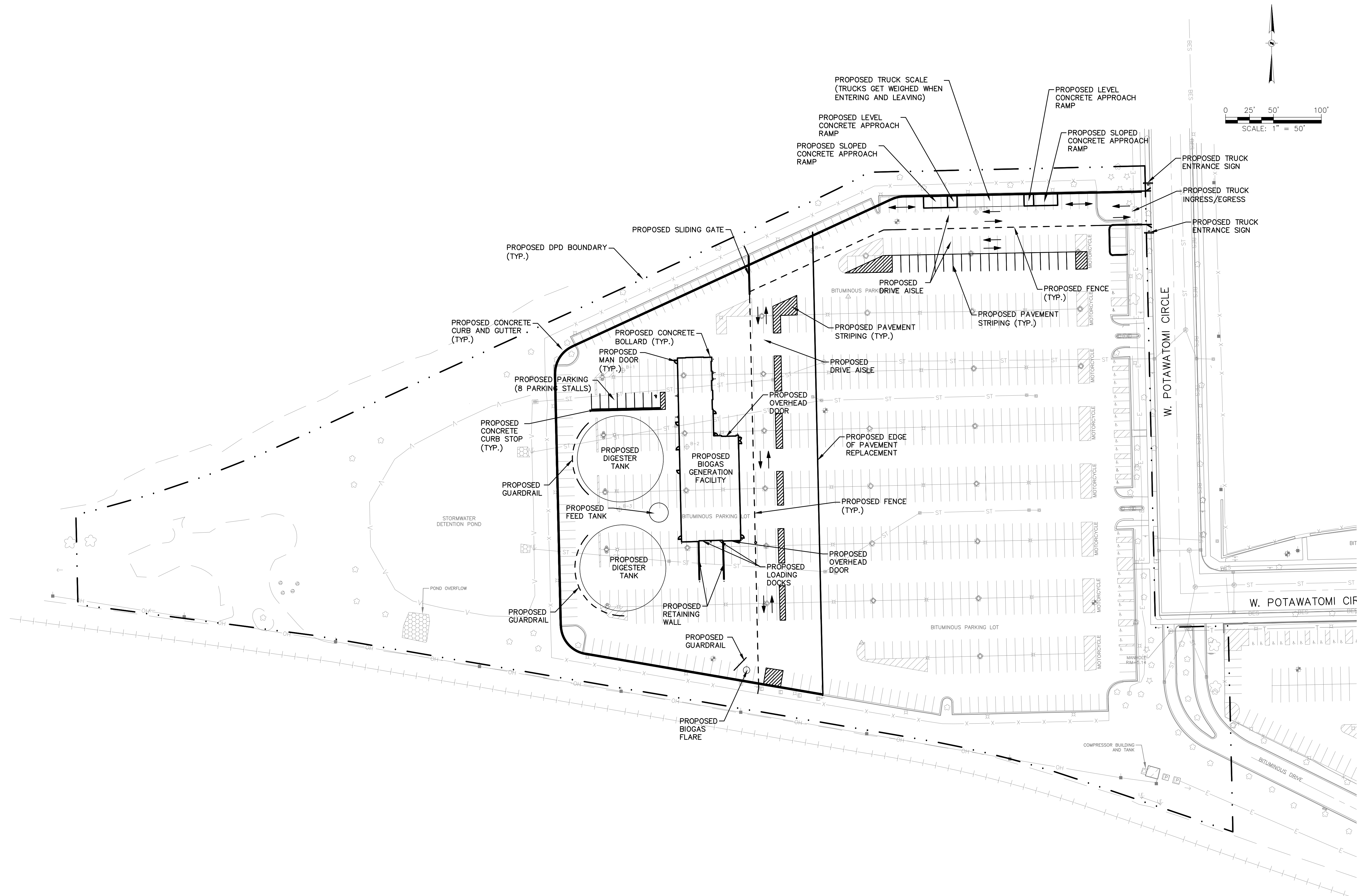
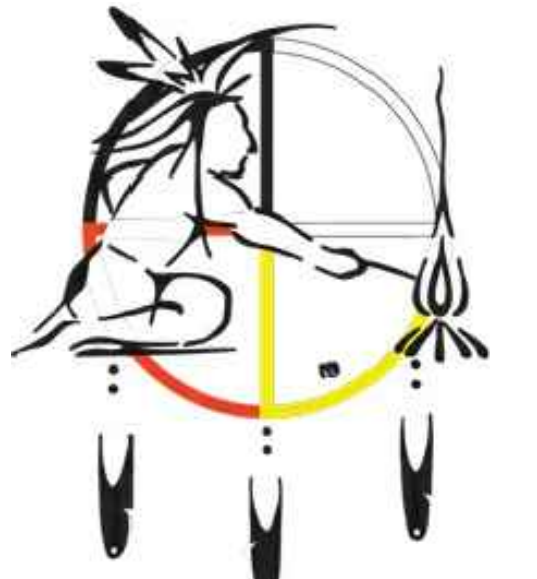
PROJECT INFORMATION:

DATE: 10-27-2011
PROJECT NUMBER: 2011-0078
CHECKED BY: DMM
APPROVED BY: JTM
SCALE: AS NOTED
FILE PATH: C:\00_DPD-4_EXISTING

SHEET TITLE:

EXISTING FACILITIES SITE PLAN

SHEET NUMBER:



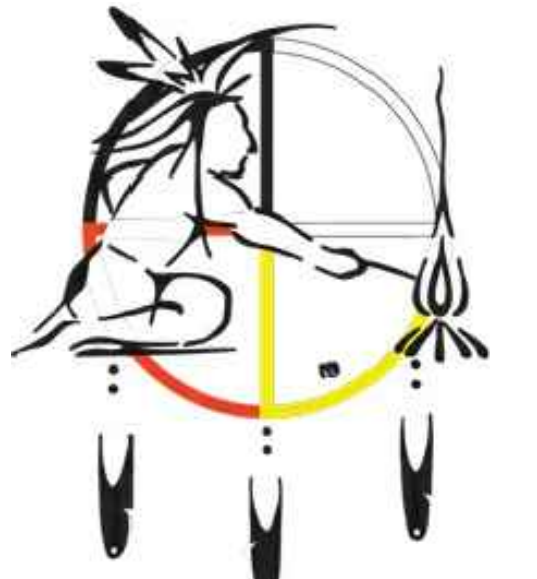
PROJECT TITLE:
DETAIL PLAN DEVELOPMENT -
FOREST COUNTY POTAWATOMI
LEGACY DISTRICT BIOGAS
GENERATION FACILITY

ISSUE:
NO. DATE REVISIONS BY

PROJECT INFORMATION:
DATE: 10-27-2011
PROJECT NUMBER: 2011-0078
CHECKED BY: DMM
APPROVED BY: JTM
SCALE: AS NOTED
FILE PATH: C:\00_DPD-5_SITE

SHEET TITLE:
PROPOSED BUILDING AND PARKING
SITE PLAN

SHEET NUMBER:



PROJECT TITLE:
DETAIL PLAN DEVELOPMENT -
FOREST COUNTY POTAWATOMI
LEGACY DISTRICT BIOGAS
GENERATION FACILITY

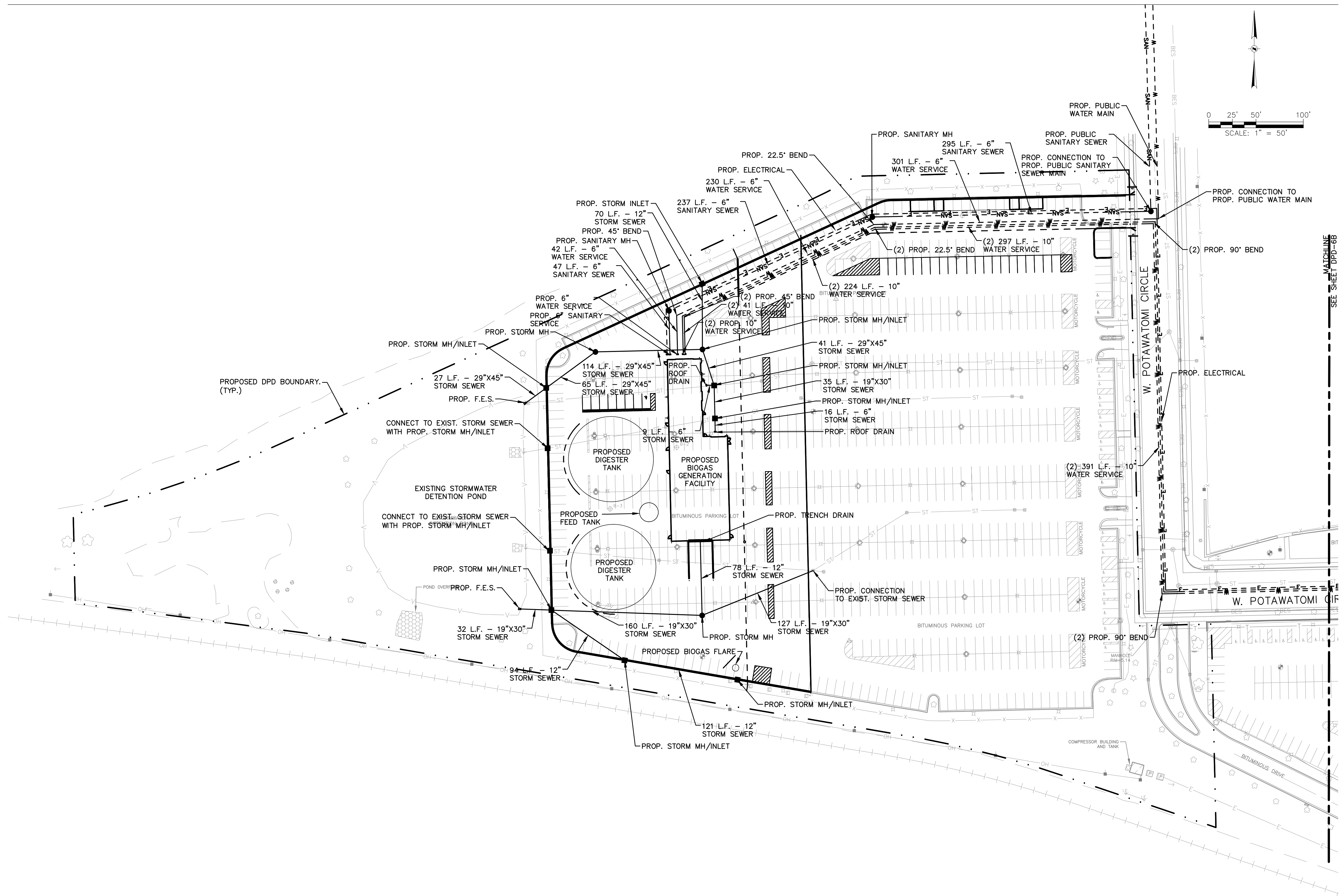
ISSUE:
NO. DATE REVISIONS BY

PROJECT INFORMATION:

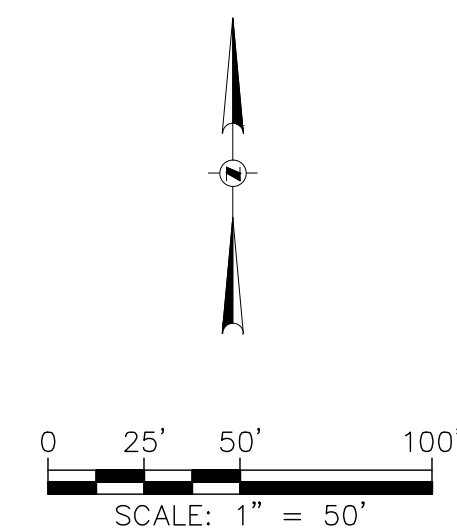
DATE: 10-27-2011
PROJECT NUMBER: 2011-0078
CHECKED BY: DMM
APPROVED BY: JTM
SCALE: AS NOTED
FILE PATH: C:\00_DPD-6_UTILITY

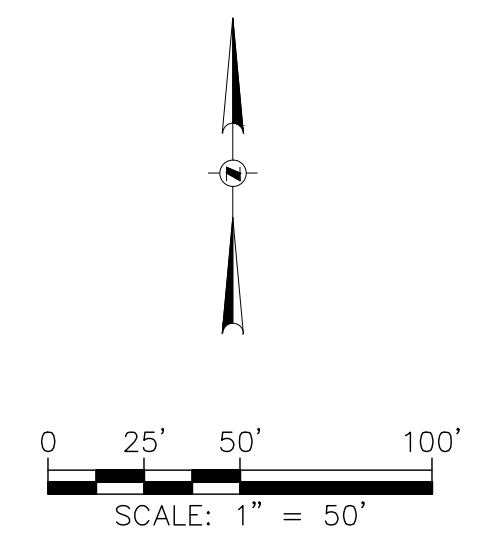
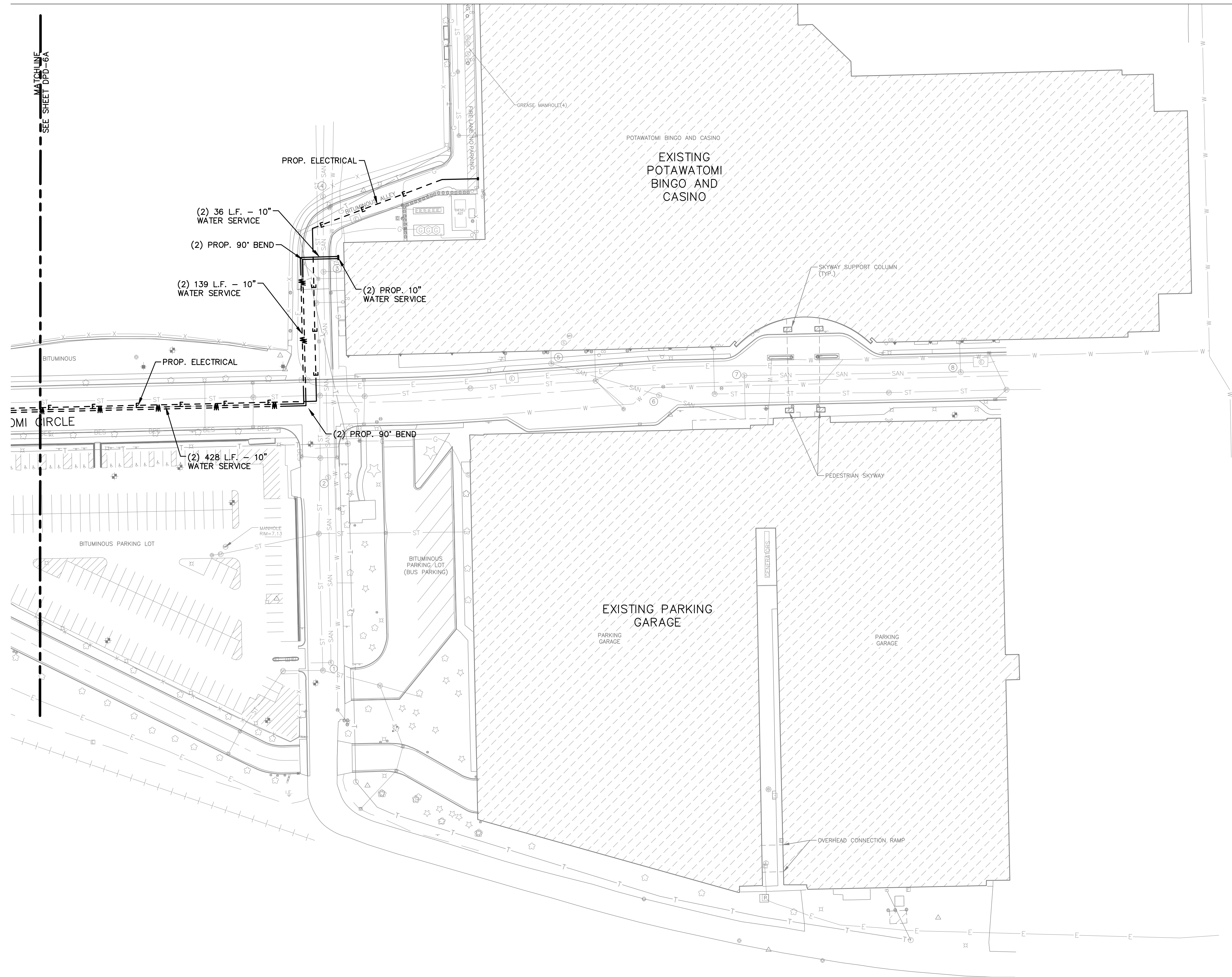
SHEET TITLE:
PROPOSED UTILITY PLAN

SHEET NUMBER:

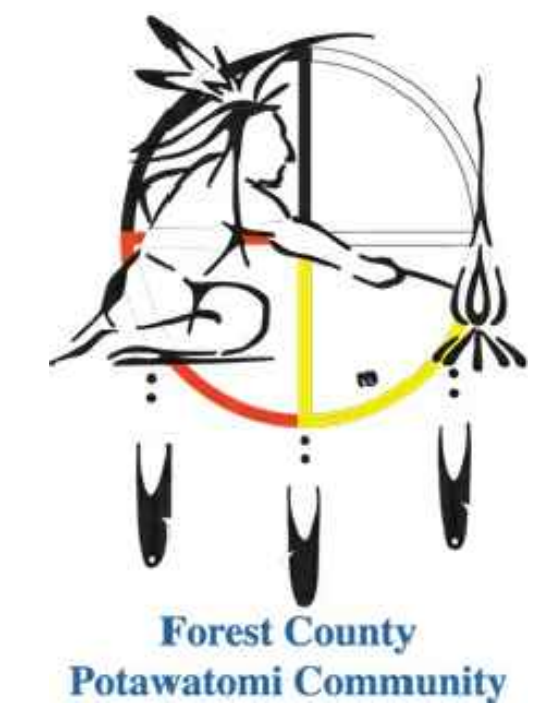


MATCHLINE
SEE SHEET DPD-6B





GRāEF
titus



PROJECT TITLE:
 DETAIL PLAN DEVELOPMENT -
 FOREST COUNTY POTAWATOMI
 LEGACY DISTRICT BIOGAS
 GENERATION FACILITY

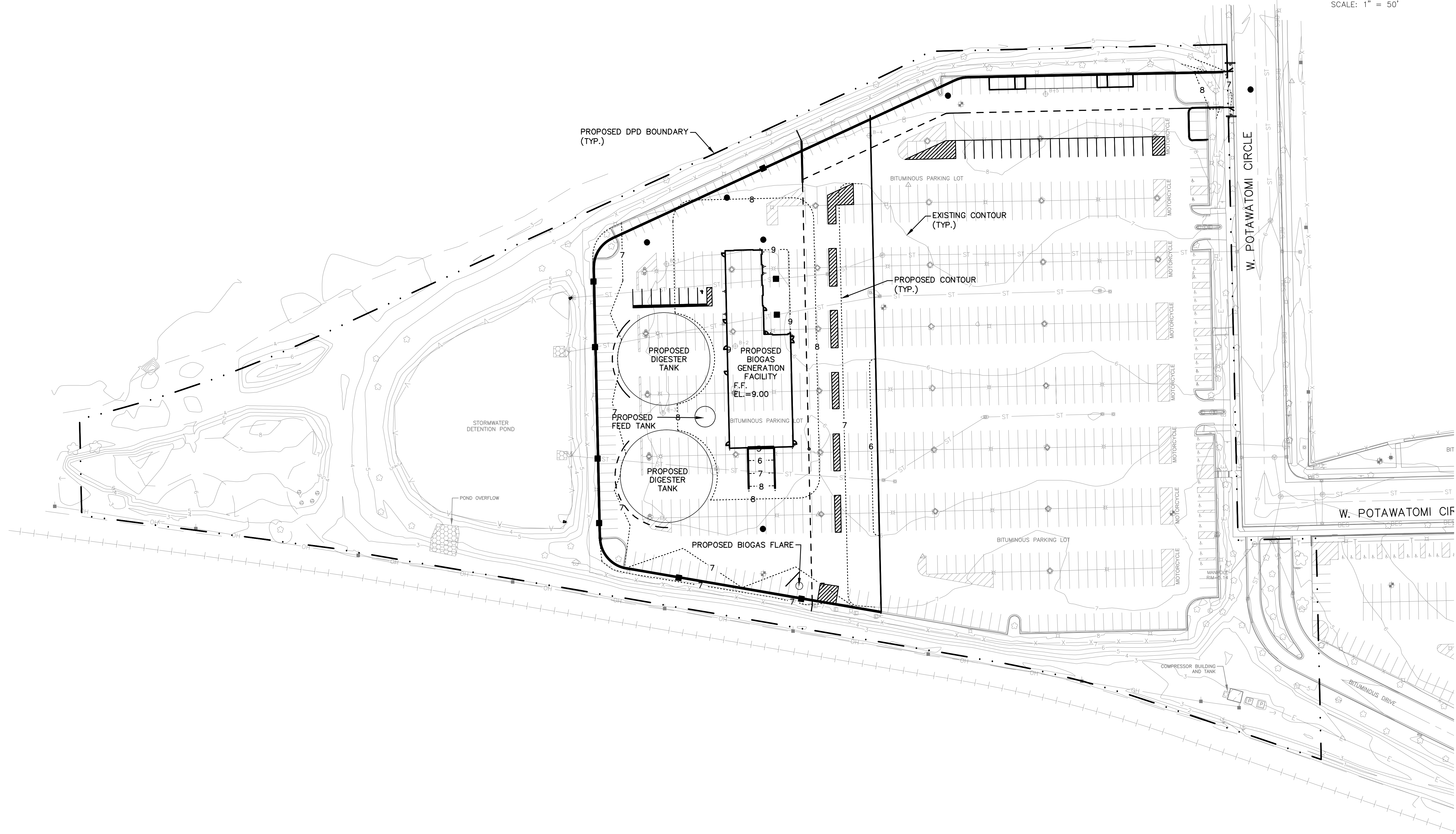
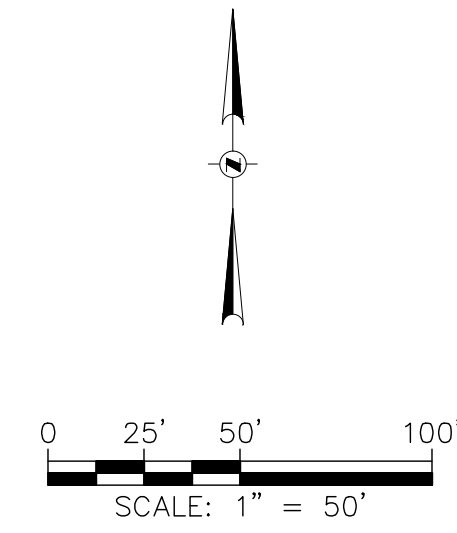
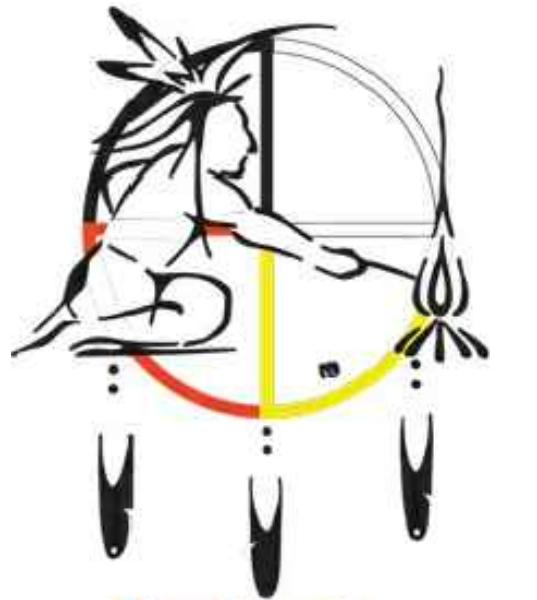
ISSUE:
 NO. DATE REVISIONS BY

PROJECT INFORMATION:
 DATE: 10-27-2011
 PROJECT NUMBER: 2011-0078
 CHECKED BY: DMM
 APPROVED BY: JTM
 SCALE: AS NOTED
 FILE PATH: C_00_DPD-6_UTILITY

SHEET TITLE:
 PROPOSED UTILITY PLAN

SHEET NUMBER:

DPD-5.2



PROJECT TITLE:

DETAIL PLAN DEVELOPMENT -
FOREST COUNTY POTAWATOMI
LEGACY DISTRICT BIOGAS
GENERATION FACILITY

ISSUE:
NO. DATE REVISIONS BY





PROJECT INFORMATION:

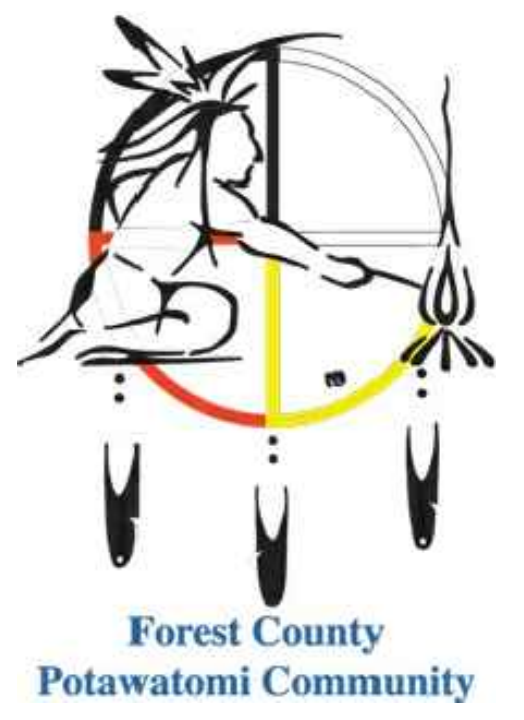
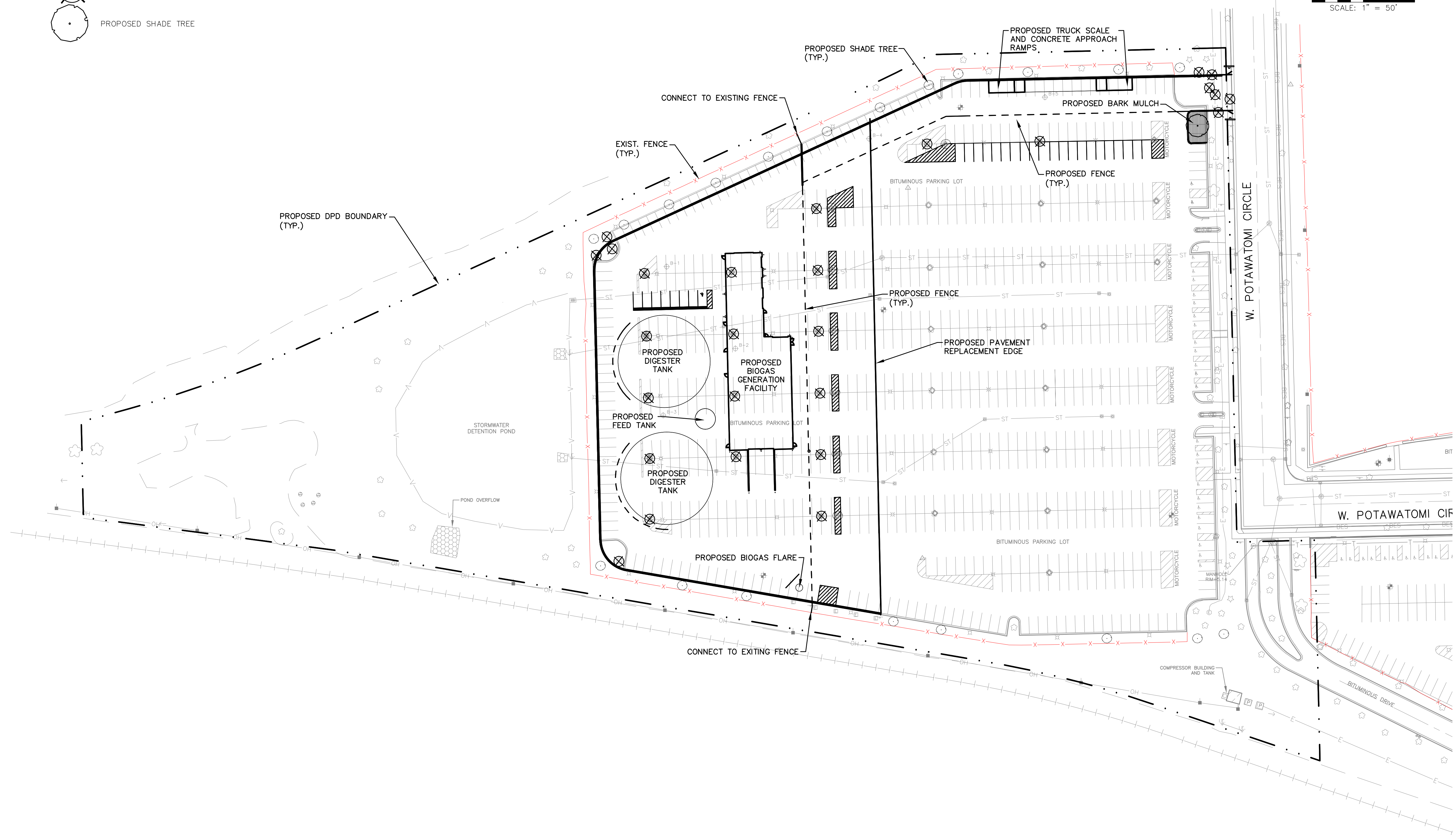
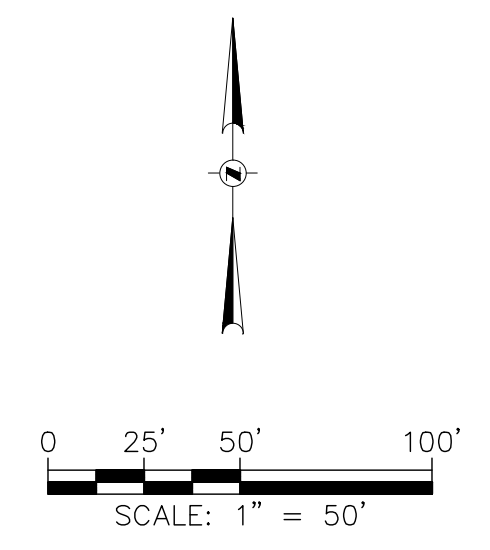
DATE: 10-27-2011
PROJECT NUMBER: 2011-0078
CHECKED BY: DMM
APPROVED BY: JTM
SCALE: AS NOTED
FILE PATH: C:\00_DPD-7_GRADING

SHEET TITLE:
PROPOSED GRADING PLAN

SHEET NUMBER:

LANDSCAPE LEGEND

-  EXISTING SHADE TREE TO REMAIN
-  EXISTING EVERGREEN TREE TO REMAIN
-  EXISTING TREE TO BE REMOVED
-  PROPOSED SHADE TREE



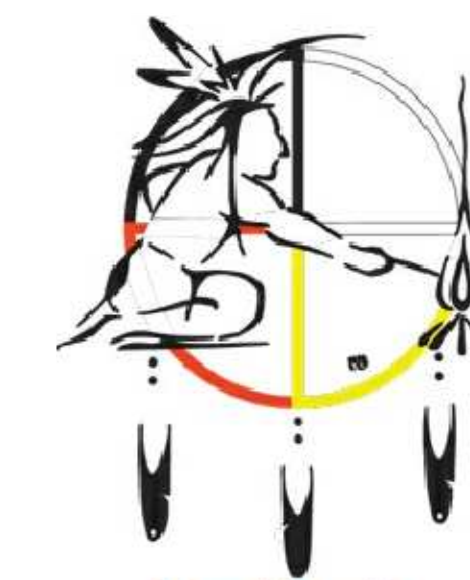
PROJECT TITLE:
 DETAIL PLAN DEVELOPMENT -
 FOREST COUNTY POTAWATOMI
 LEGACY DISTRICT BIOGAS
 GENERATION FACILITY

ISSUE:
 NO. DATE REVISIONS BY
 1 12/1/2011 SHADE TREES MDB

PROJECT INFORMATION:
 DATE: 10-27-2011
 PROJECT NUMBER: 2011-0078
 CHECKED BY: DMM
 APPROVED BY: JTM
 SCALE: AS NOTED
 FILE PATH: C:\00_DPD-8_LANDSCAPE

SHEET TITLE:
 PROPOSED LANDSCAPE PLAN

SHEET NUMBER:



PROJECT TITLE:
DETAIL PLAN DEVELOPMENT -
FOREST COUNTY POTAWATOMI
LEGACY DISTRICT BIOGAS
GENERATION FACILITY

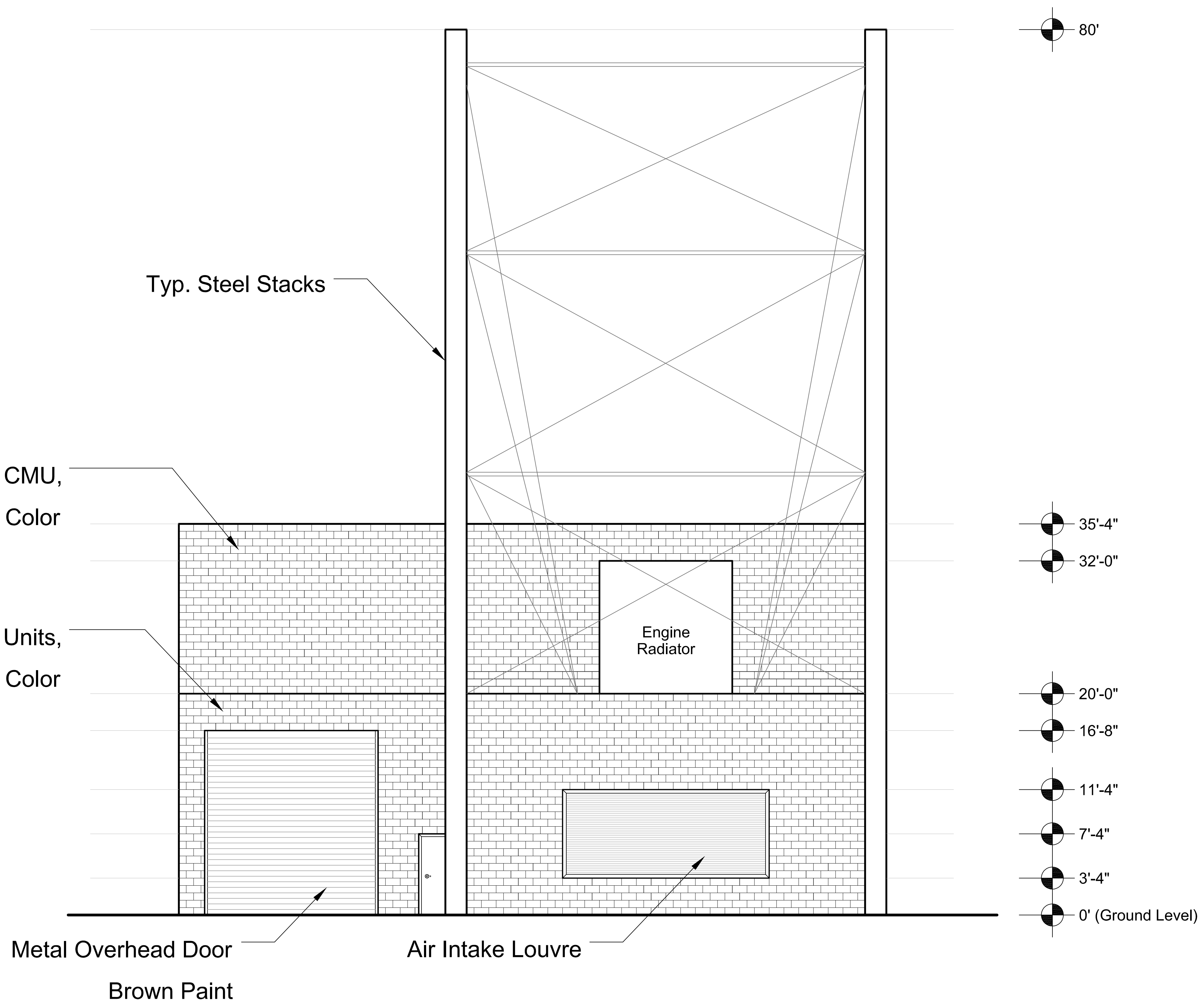
ISSUE:
NO. DATE REVISIONS BY

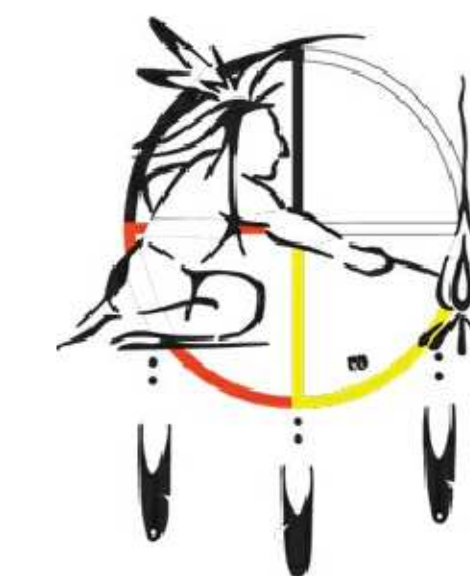
PROJECT INFORMATION:

DATE: 10-27-2011
PROJECT NUMBER: 2011-0078
CHECKED BY: MDB
APPROVED BY: CRO
SCALE: 3/16" = 1'-0"
FILE PATH:

SHEET TITLE:
PROPOSED BUILDING ELEVATIONS
GENERATION FACILITY
NORTH ELEVATION

SHEET NUMBER:





PROJECT TITLE:
DETAIL PLAN DEVELOPMENT -
FOREST COUNTY POTAWATOMI
LEGACY DISTRICT BIOGAS
GENERATION FACILITY

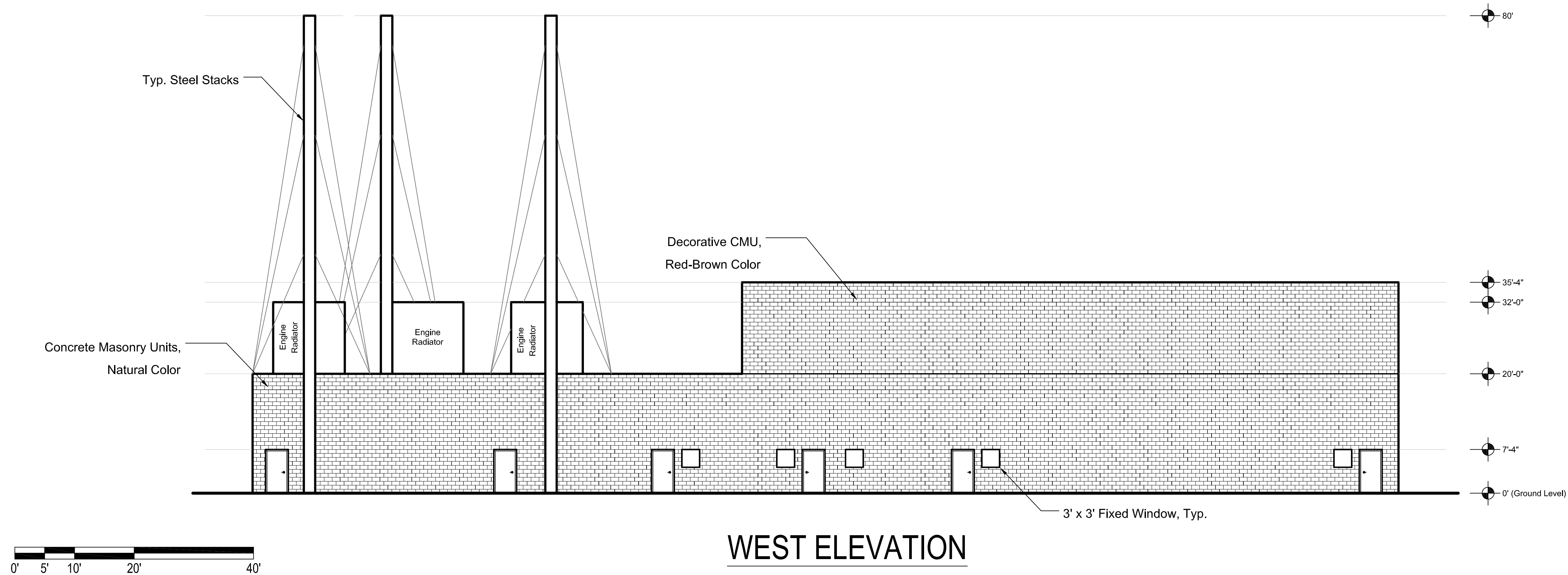
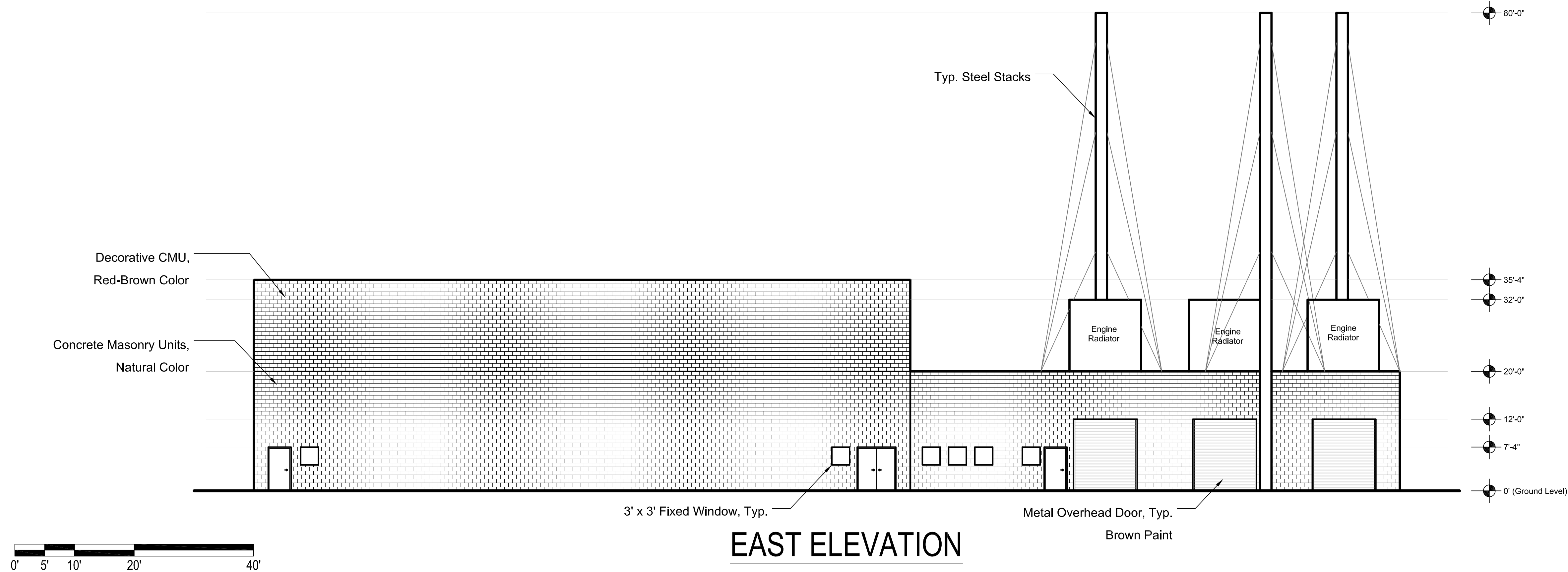
ISSUE:
NO. DATE REVISIONS BY

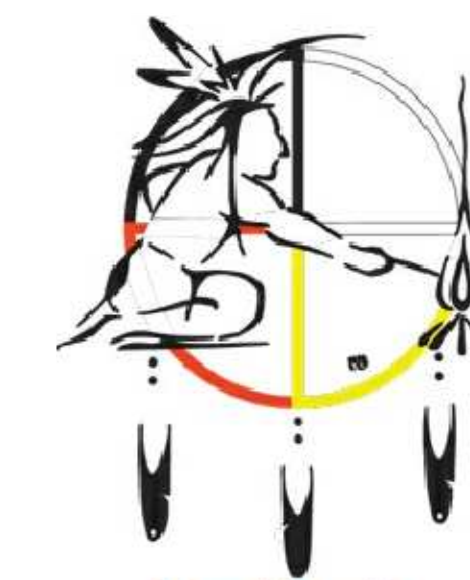
PROJECT INFORMATION:

DATE: 10-27-2011
PROJECT NUMBER: 2011-0078
CHECKED BY: MDB
APPROVED BY: CRO
SCALE: 3/32" = 1'-0"
FILE PATH:

SHEET TITLE:
PROPOSED BUILDING ELEVATIONS
GENERATION FACILITY
EAST AND WEST ELEVATIONS

SHEET NUMBER:





PROJECT TITLE:
DETAIL PLAN DEVELOPMENT -
FOREST COUNTY POTAWATOMI
LEGACY DISTRICT BIOGAS
GENERATION FACILITY

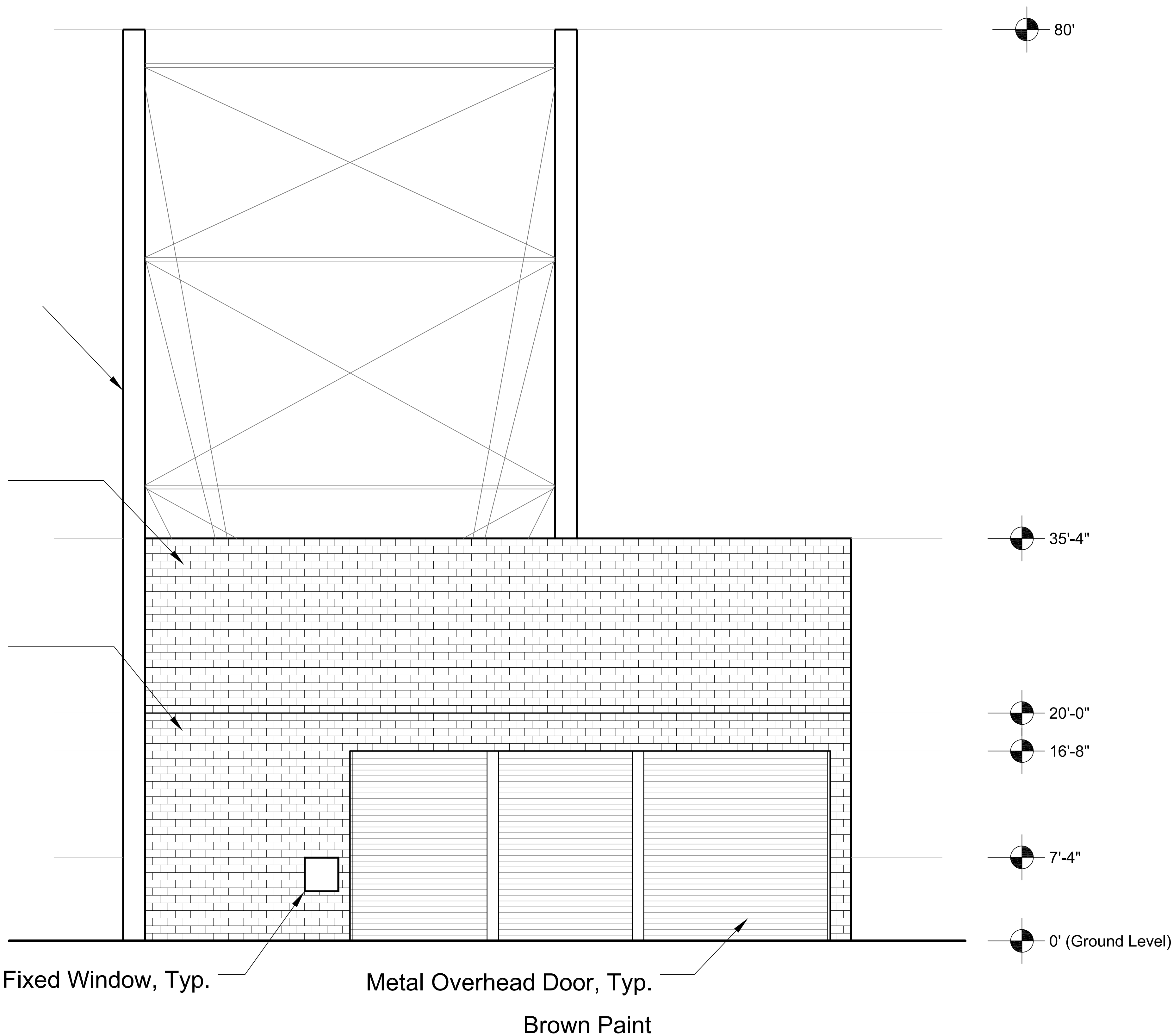
ISSUE:
NO. DATE REVISIONS BY

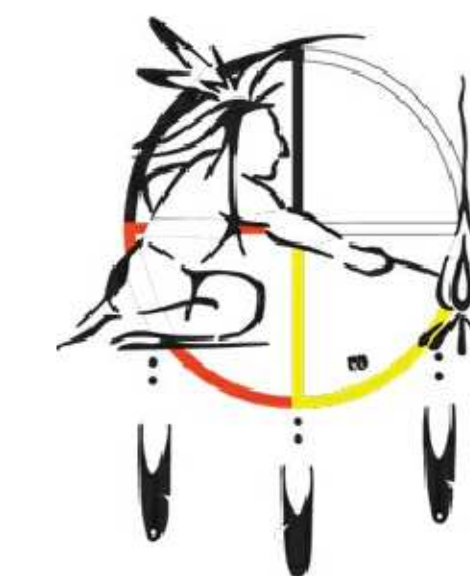
PROJECT INFORMATION:

DATE: 10-27-2011
PROJECT NUMBER: 2011-0078
CHECKED BY: MDB
APPROVED BY: CRO
SCALE: 3/16" = 1'-0"
FILE PATH:

SHEET TITLE:
PROPOSED BUILDING ELEVATIONS
GENERATION FACILITY
SOUTH ELEVATION

SHEET NUMBER:





PROJECT TITLE:
DETAIL PLAN DEVELOPMENT -
FOREST COUNTY POTAWATOMI
LEGACY DISTRICT BIOGAS
GENERATION FACILITY

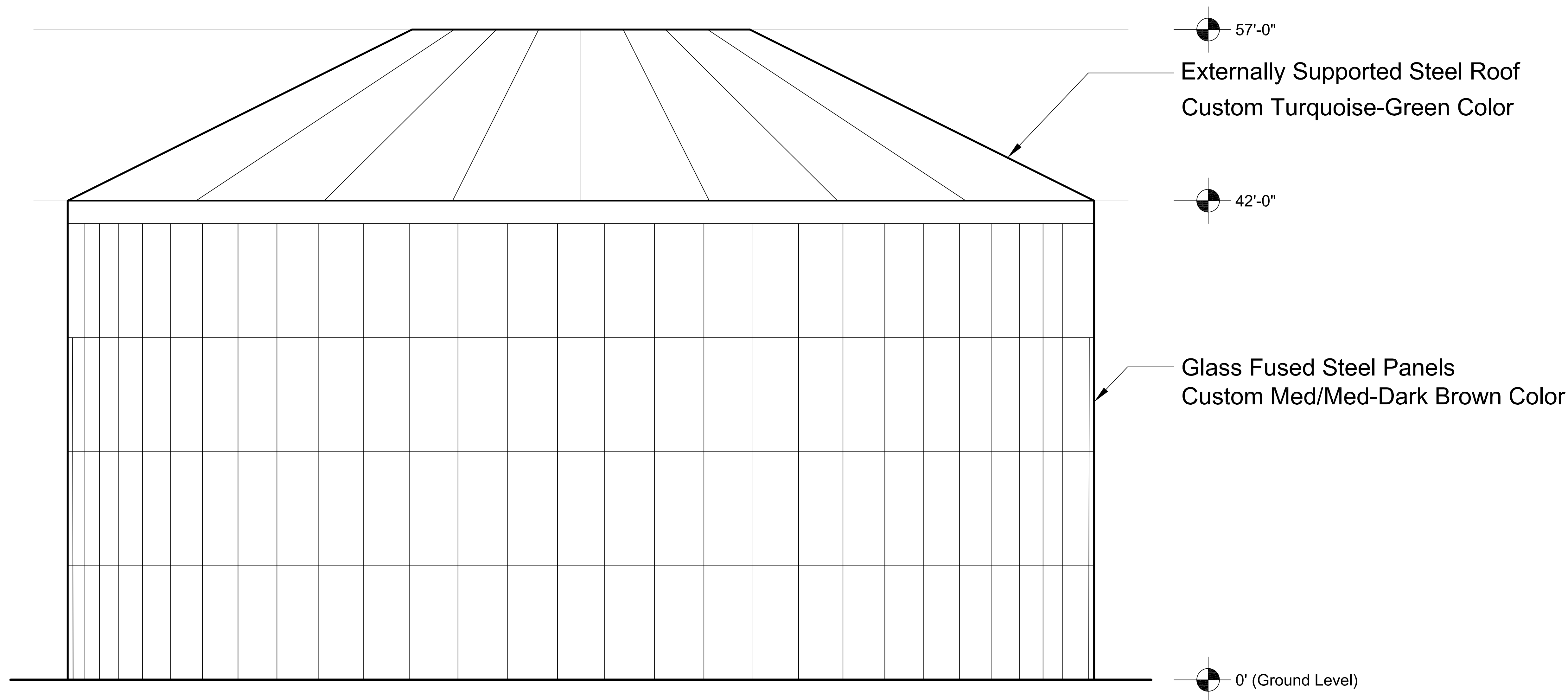
ISSUE:
NO. DATE REVISIONS BY

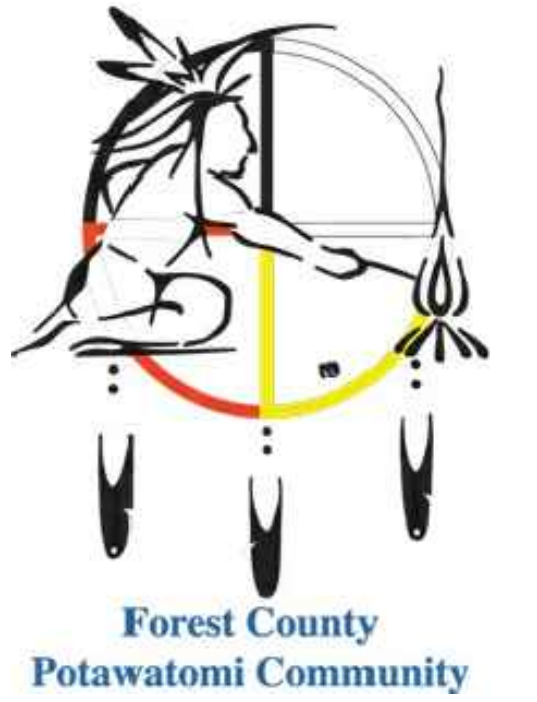
PROJECT INFORMATION:

DATE: 10-27-2011
PROJECT NUMBER: 2011-0078
CHECKED BY: MDB
APPROVED BY: CRO
SCALE: 3/16" = 1'-0"
FILE PATH:

SHEET TITLE:
PROPOSED BUILDING ELEVATIONS
DIGESTER TANK
ALL DIRECTIONS

SHEET NUMBER:





PROJECT TITLE:
DETAIL PLAN DEVELOPMENT -
FOREST COUNTY POTAWATOMI
LEGACY DISTRICT BIOGAS
GENERATION FACILITY

ISSUE:
NO. DATE REVISIONS BY

PROJECT INFORMATION:
DATE: 10-27-2011
PROJECT NUMBER: 2011-0078
CHECKED BY: DMM
APPROVED BY: JTM
SCALE: AS NOTED
FILE PATH: C:\00_DPD-10_SIGNAGE

SHEET TITLE:
PROPOSED SIGNAGE PLAN

SHEET NUMBER:

