

①

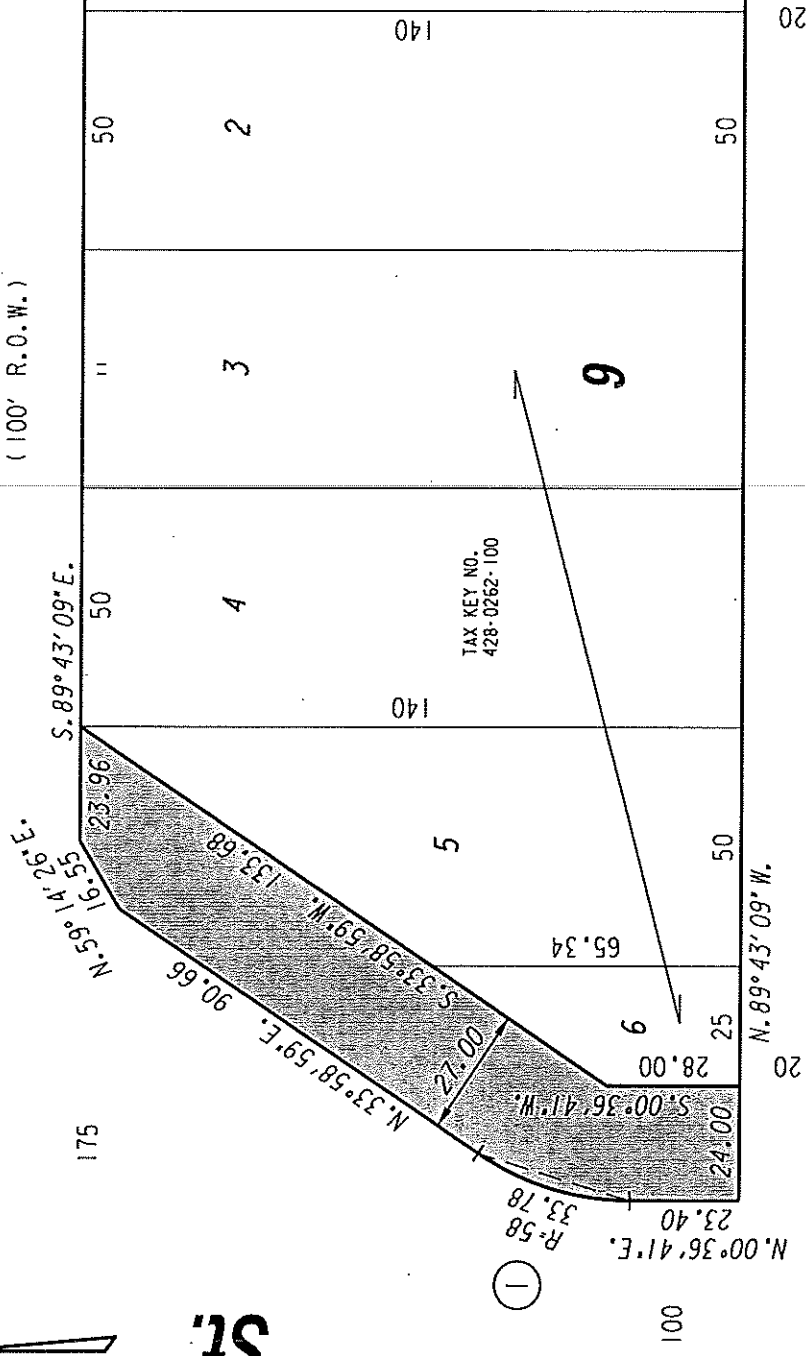
R= 58.00'
 A= 33.78'
 C= 33.31'
 I <= 33° 22' 18"
 D <= 16° 41' 09"
 C.B.= N. 17° 17' 50" E.

N.E. 1/4 SEC. 32, T.7N., R.22E.

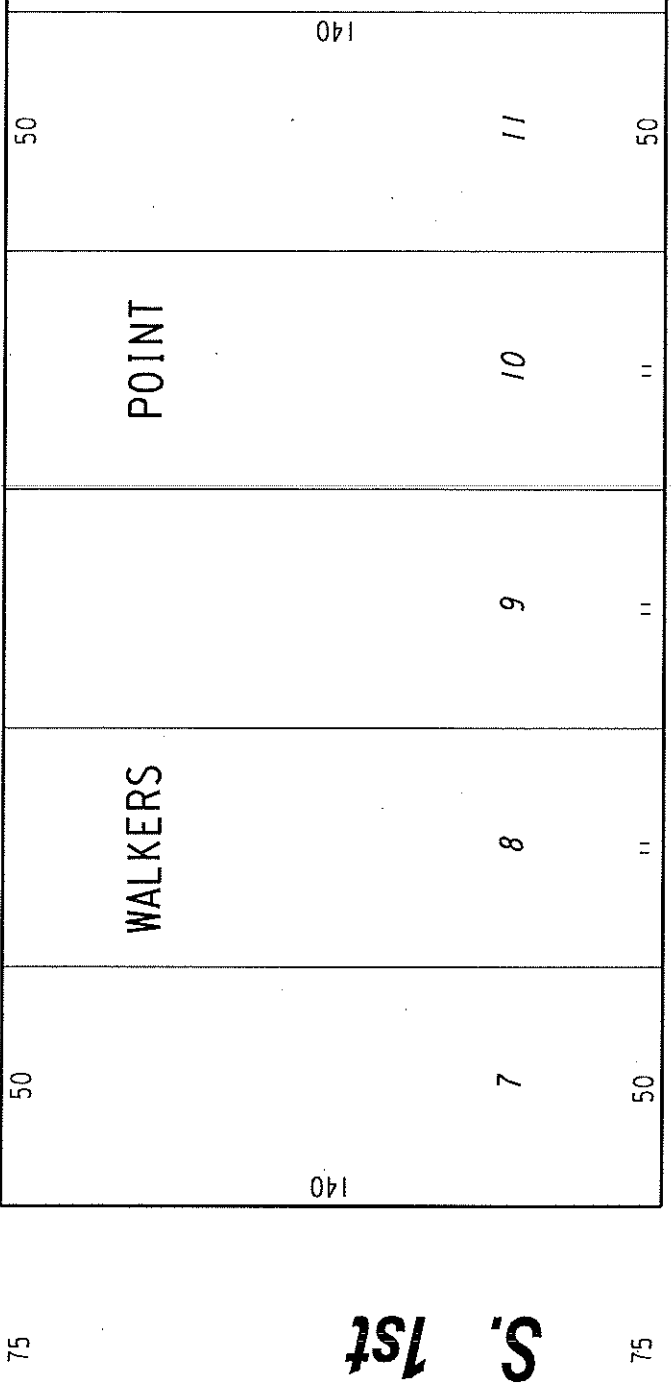
428

E. Pittsburgh Ave.

(100' R.O.W.)



St.



E. Oregon

St.



PORTION OF PUBLIC
 STREET PROPOSED
 TO BE VACATED

EXHIBIT "A"
 FILE NO. 140201
 INFRASTRUCTURE SERVICES DIVISION
 MILWAUKEE, WISCONSIN

ASSIGNED TO: W.E. FUCHS
 DRAWN BY: W.E.F.
 PROJECT/GRANT NO.: WKS2337346
 APPROVED BY:

CH'K'D. BY: W.E. FUCHS
 DATE: AUG. 13, 2014
 SCALE: 1" = 40'

[Signature]
 CENTRAL DRAFTING & RECORDS MANAGER

[Signature]
 CITY ENGINEER