

W. Walker

(76' R.O.W.)

St.

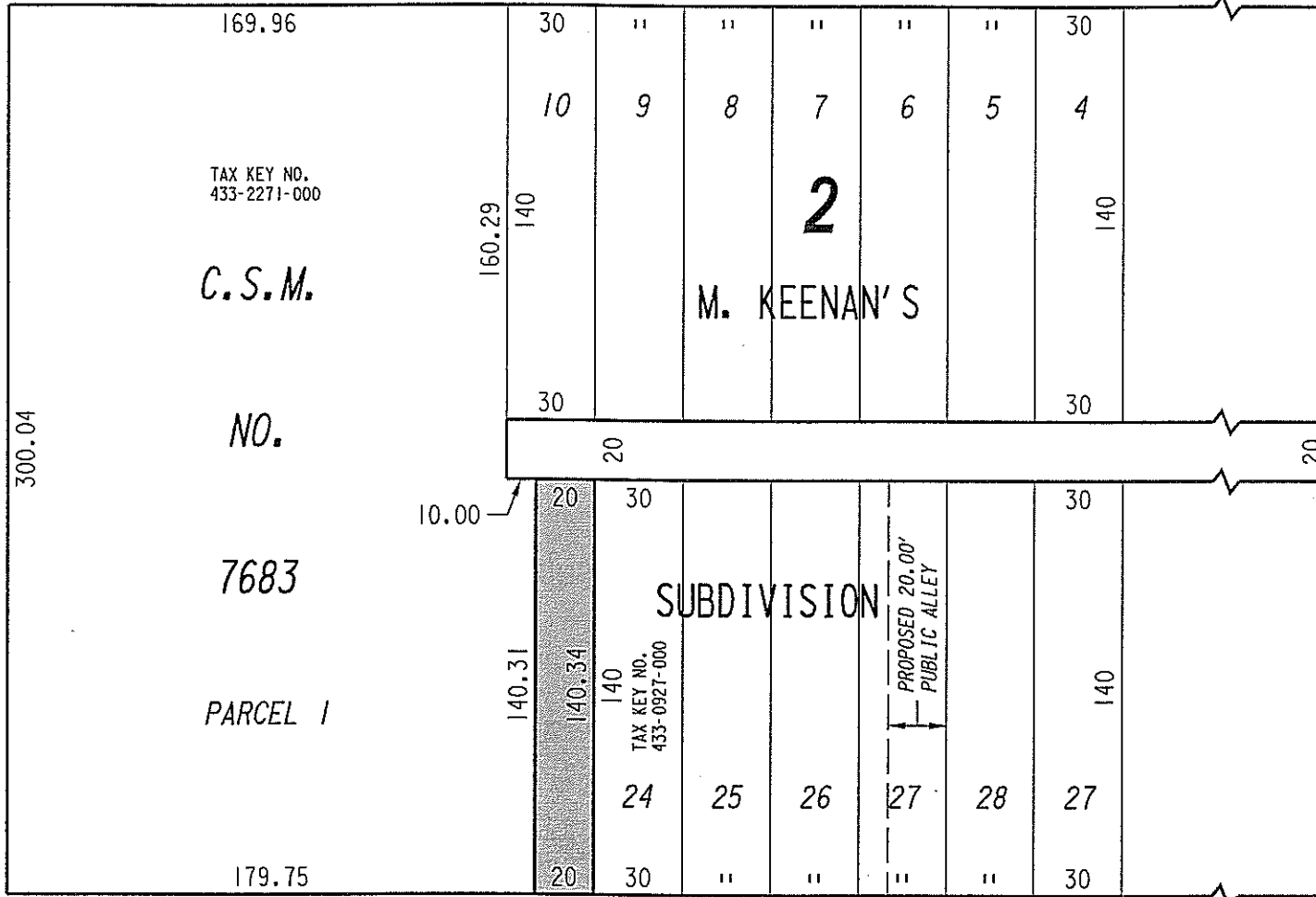
S.E. 1/4 SEC. 31, T.7N., R.22E.

433

Dr.

(66' R.O.W.)

S. Cesar E. Chavez



TAX KEY NO. 433-2271-000

C.S.M.

NO.

7683

PARCEL 1

2

M. KEENAN'S

SUBDIVISION

PROPOSED 20.00' PUBLIC ALLEY

TAX KEY NO. 433-0927-000



PORTION OF PUBLIC ALLEY PROPOSED TO BE VACATED

W. Mineral

(66.47' R.O.W.)

St.

St.

(41' R.O.W.)

S. 15th

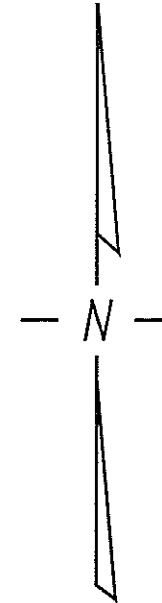


EXHIBIT "A" FILE NO. 091018

INFRASTRUCTURE SERVICES DIVISION MILWAUKEE, WISCONSIN

ASSIGNED TO: W.E. FUCHS

CH'K'D. BY: W.E. FUCHS

DRAWN BY: W.E.F.

DATE: MARCH 1, 2010

PROJECT/GRANT NO.: WK52337290

SCALE: 1" = 60'

APPROVED BY:

marcia Cornell

CENTRAL DRAFTING & RECORDS MANAGER

Signature of City Engineer

CITY ENGINEER