

Historic Preservation Commission Meeting APRIL 8, 2013

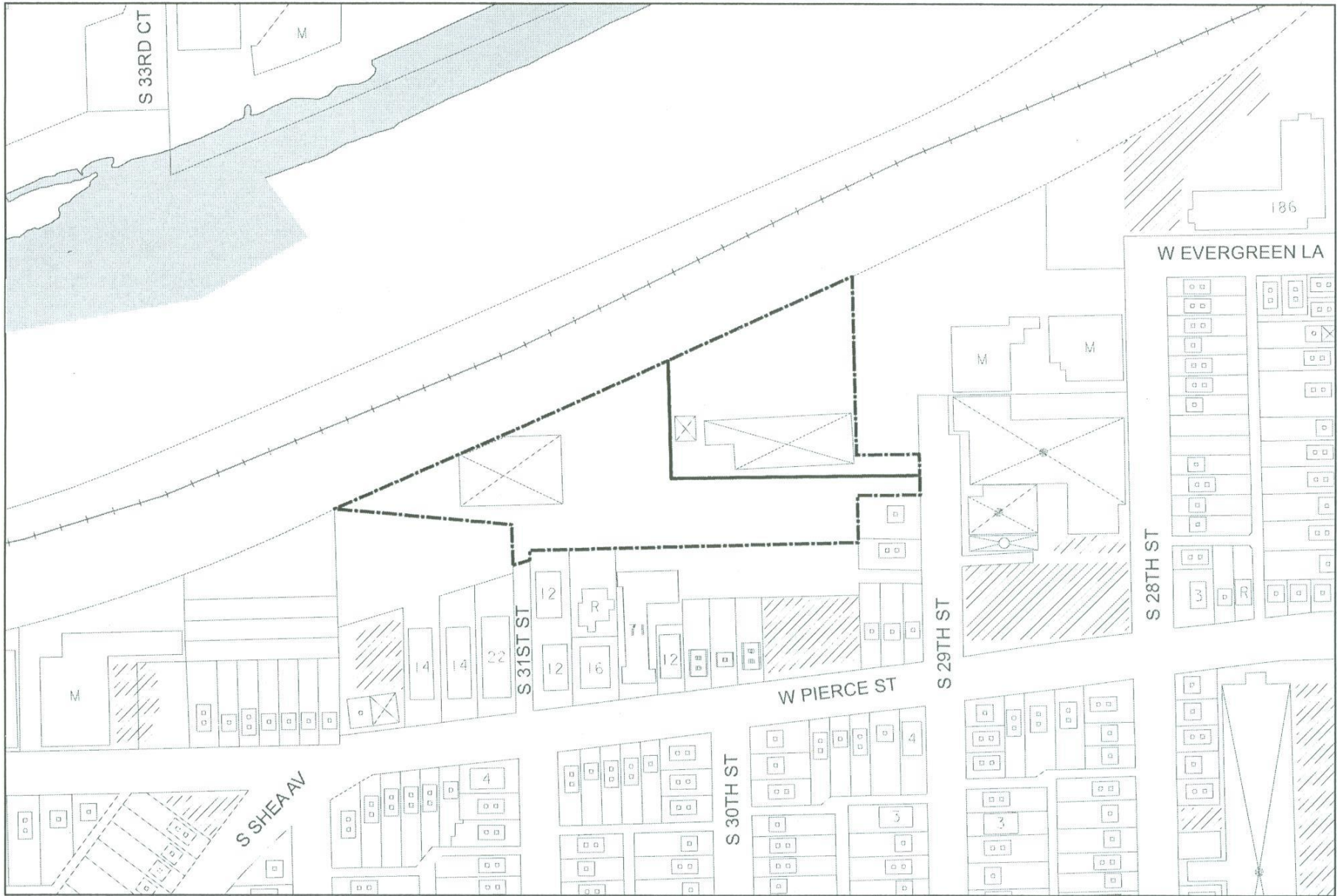


- Good Afternoon!
Please sign in at the door
- If you wish to speak on an issue or have your opinion noted by the commission, please fill out a form at the door and hand it to us

*Historic Designation of the
Franz Falk Bavaria
Brewery*

*639 and 641 South 29th
Street*

New Bavaria Brewery a/k/a the Franz Falk Brewing Company 639-641 S. 29th Street



 Proposed Historic Property

0 75 150 300 Feet



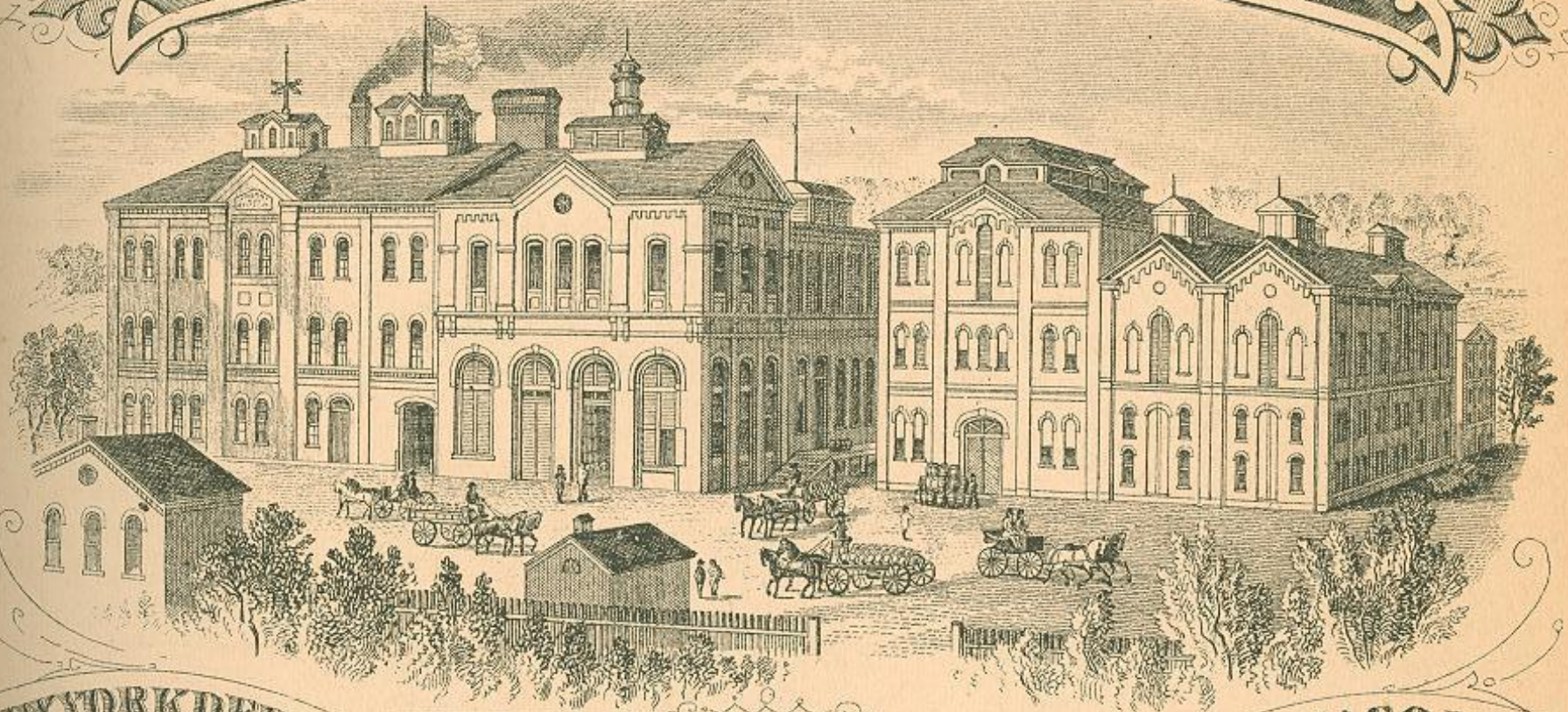


C. 1876

FRANK FALK'S BAVARIA BREWERY, MILWAUKEE, WIS.

FRANZ FAULK'S

BAVARIA BREWERY



NEW YORK DEPOT
22 & 24 VESEY ST.

W. H. W. & W. H. W. & W. H. W.

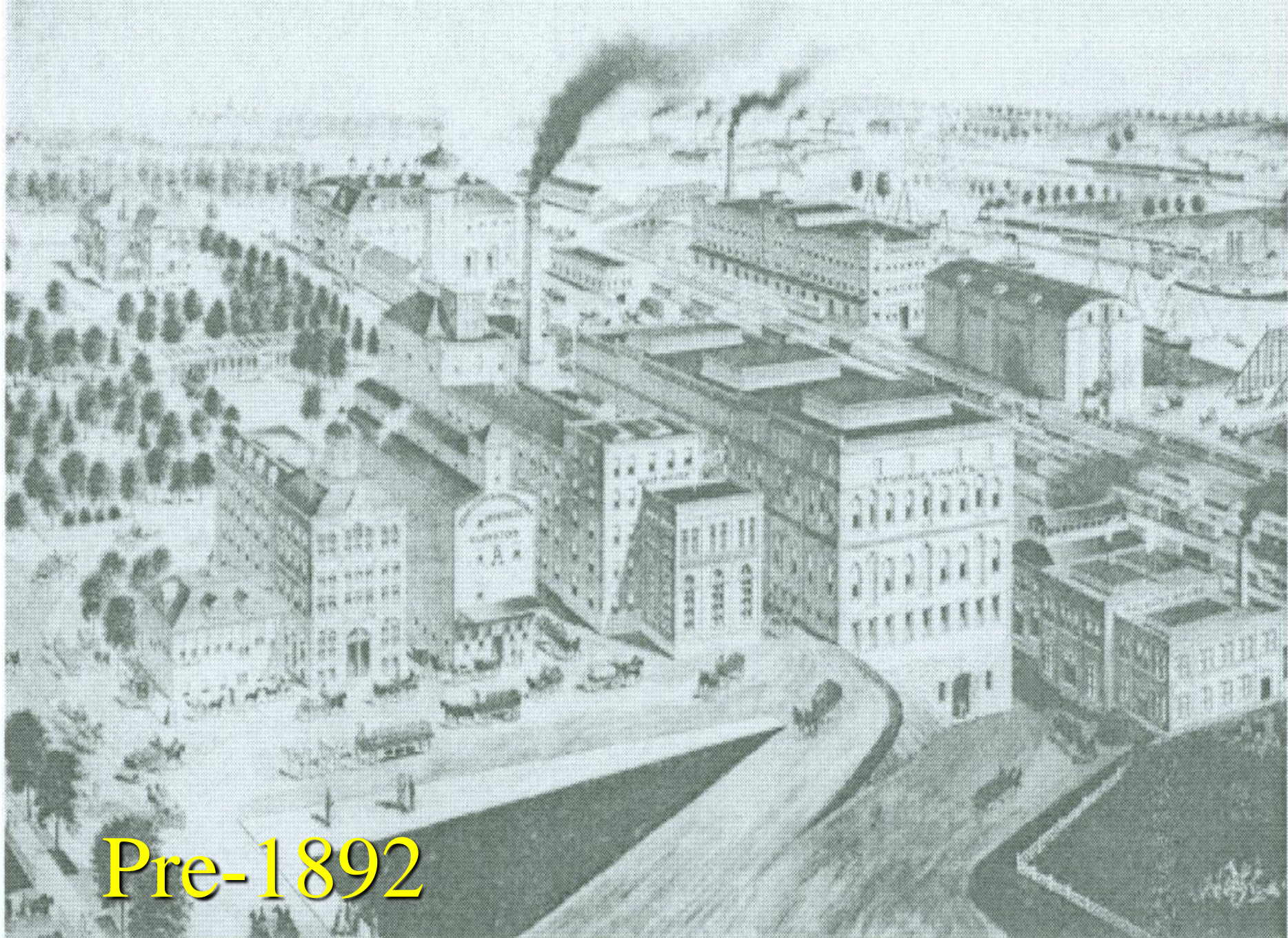
CHICAGO DEPOT
13 & 15 WEST OHIO ST.

1879

MILWAUKEE

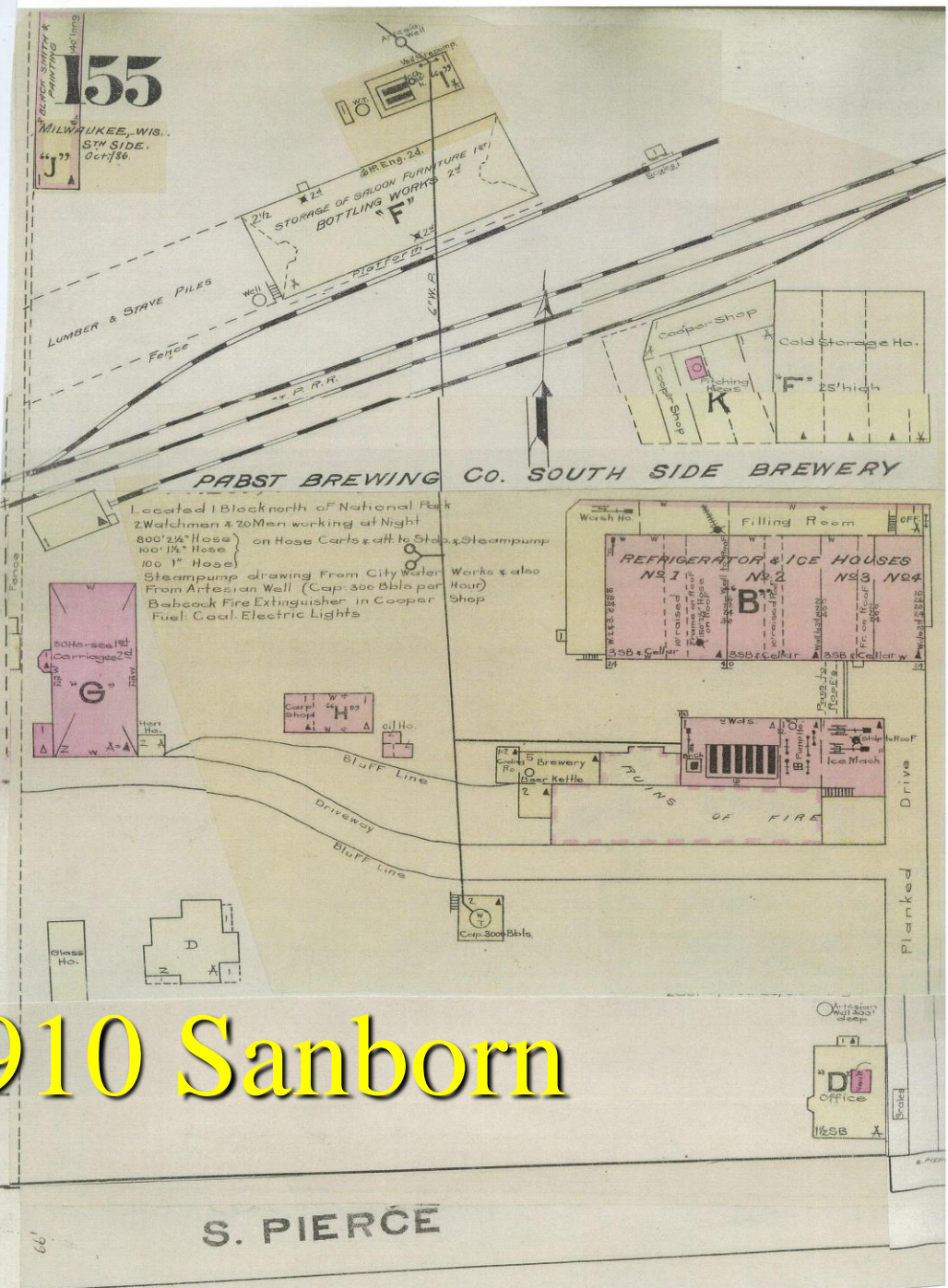


WAGNER



Pre-1892

155
 MILWAUKEE, WIS.
 5TH SIDE.
 44 33
 J
 1910



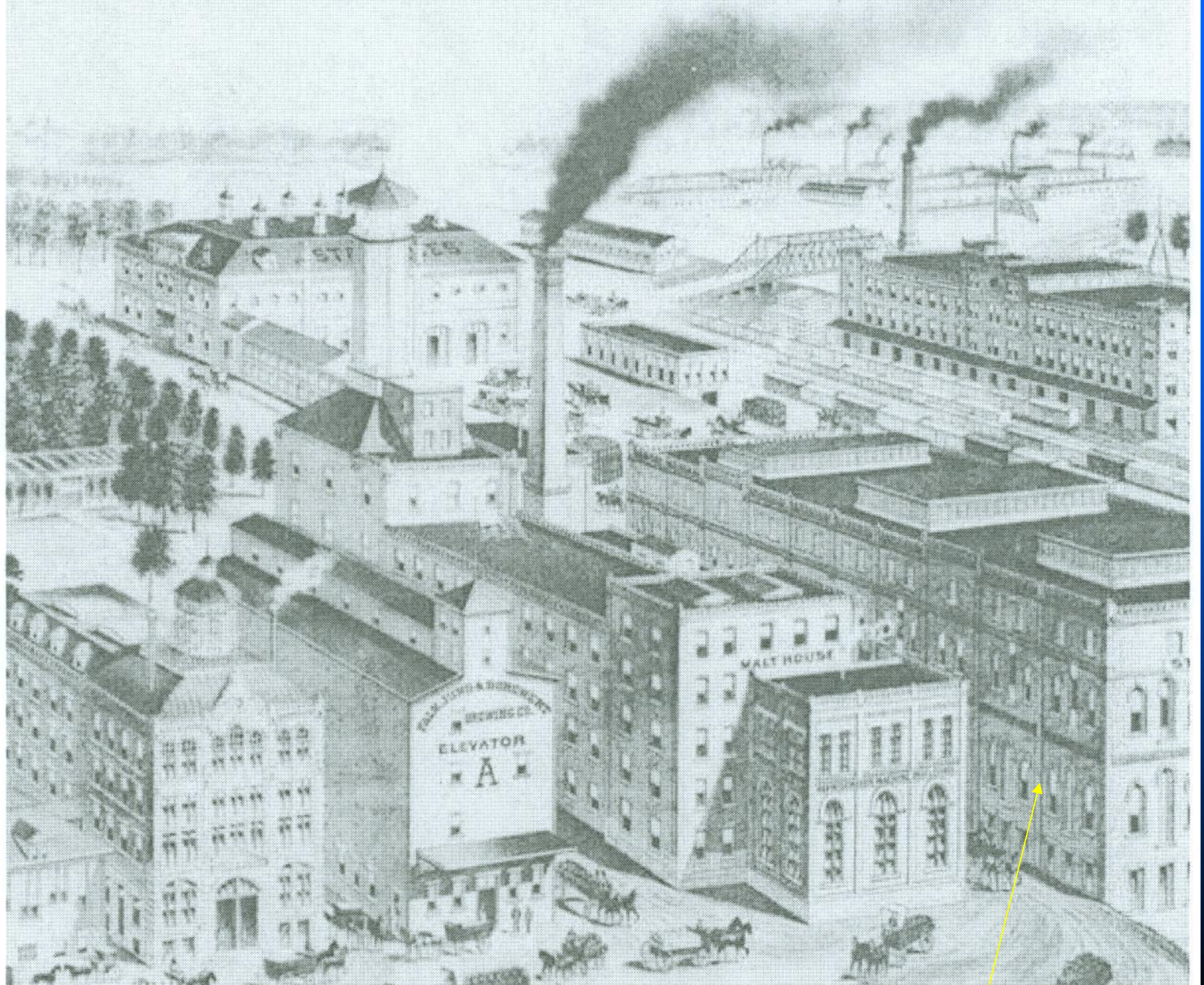
1910 Sanborn

S. PIERCE

166



South Elevation Ice House/Malt House











North Elevation

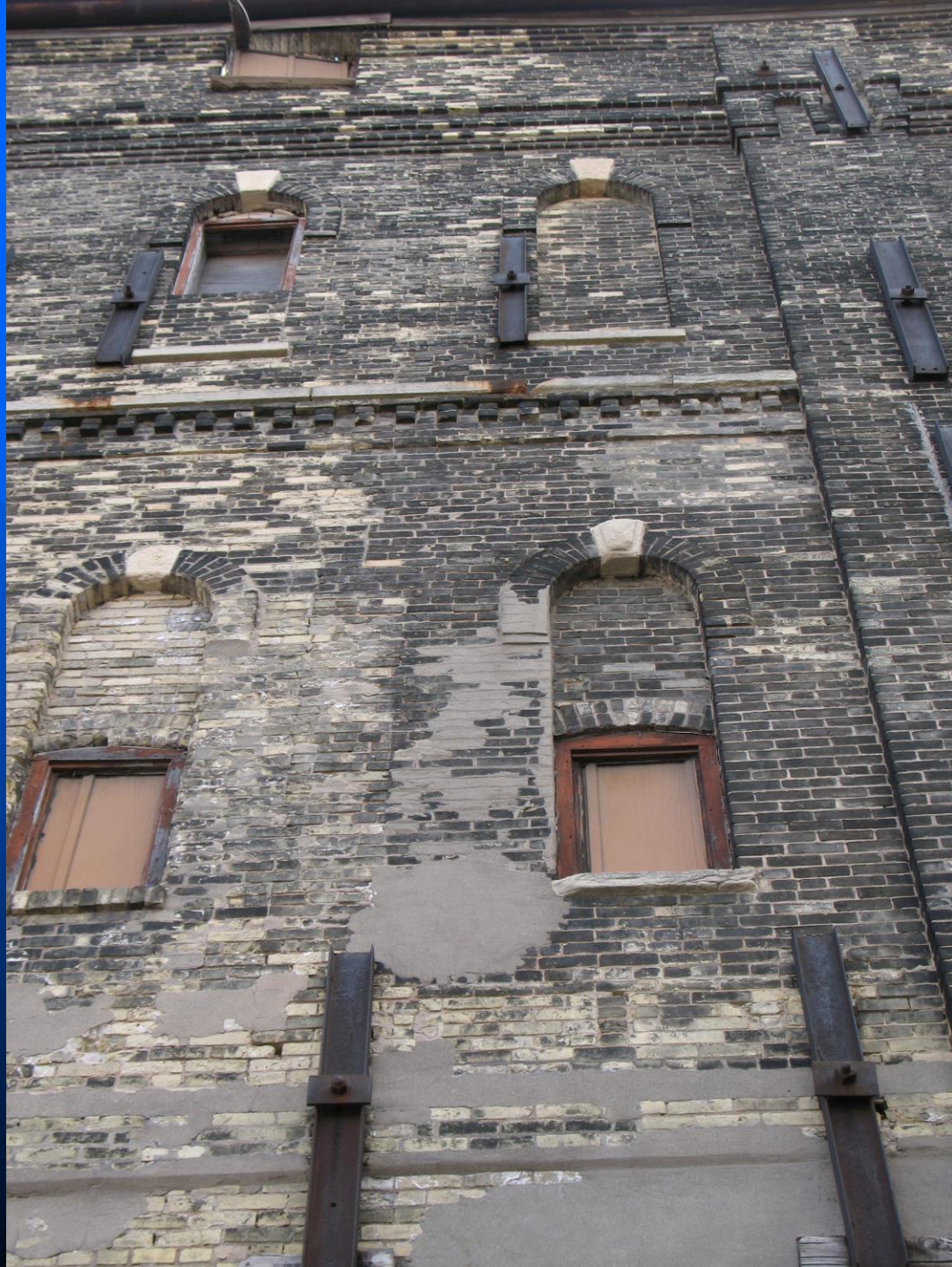


30161

30161

347

1601



1870.





Office











Blue container

OPPY

24 PUNCH TOPPING
Blue box with cereal illustration

Red box on floor



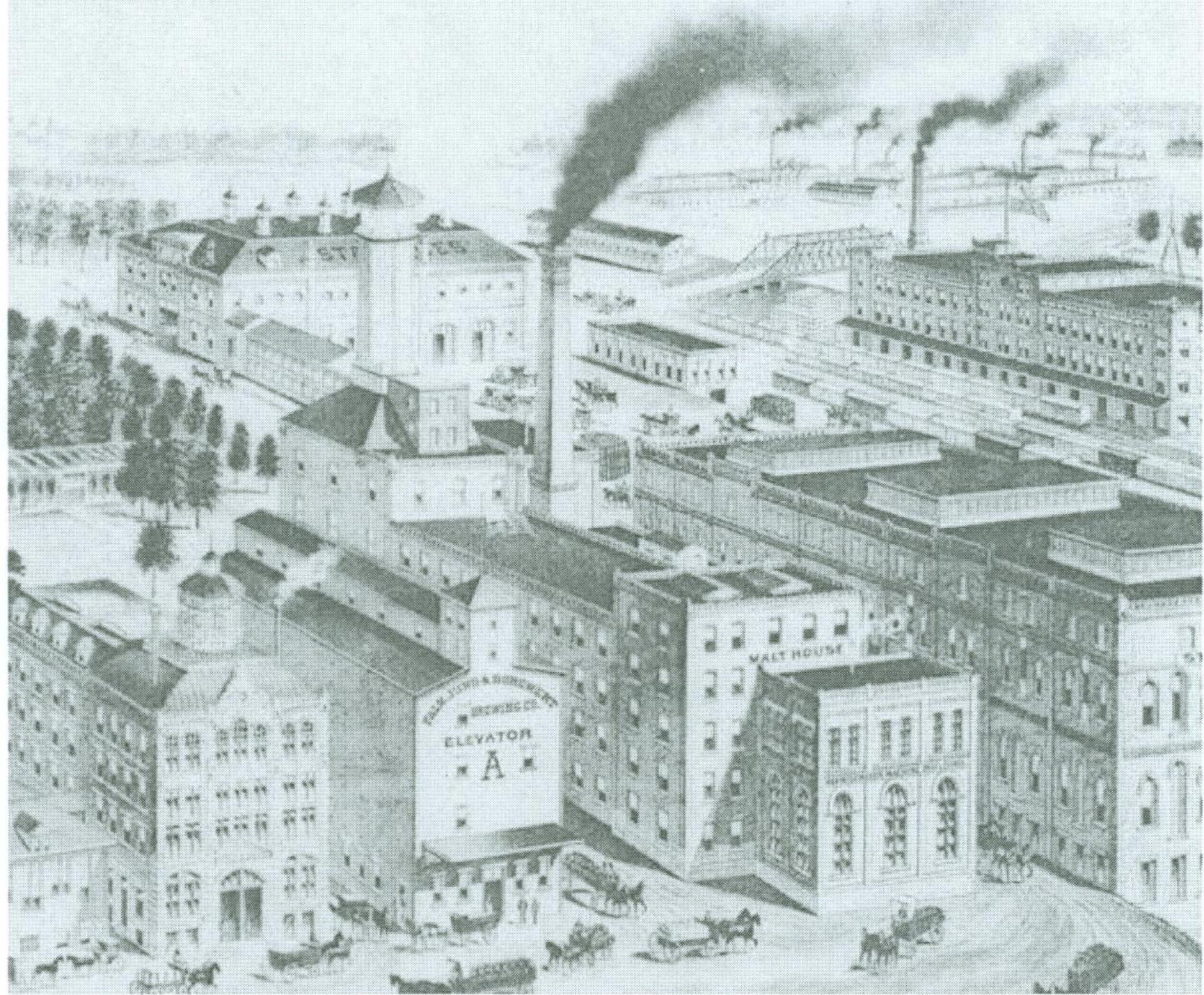








Stable







SLIMS

SLIMS

Large graffiti piece in yellow and orange with a green background, featuring stylized, interconnected letters.

MOM

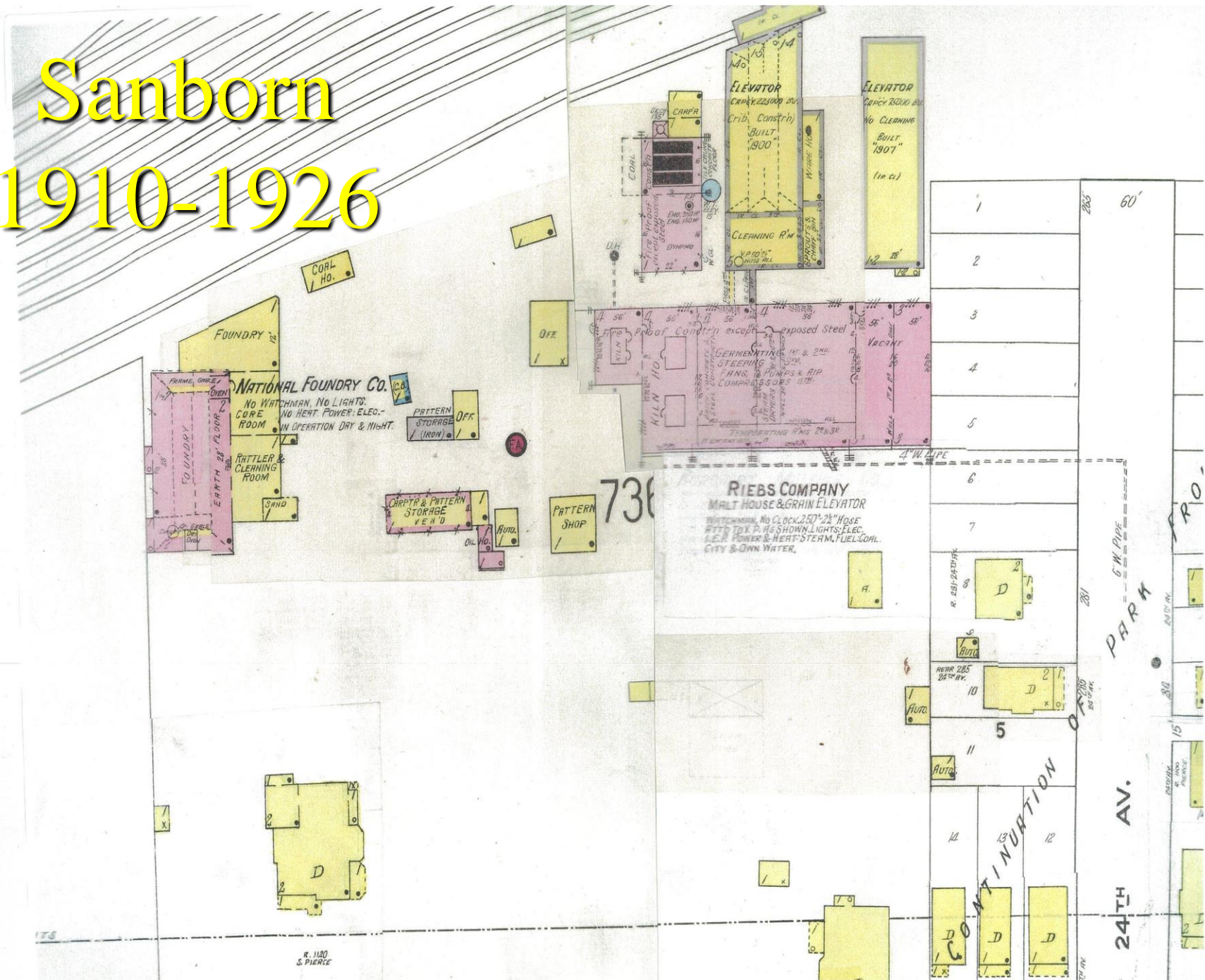


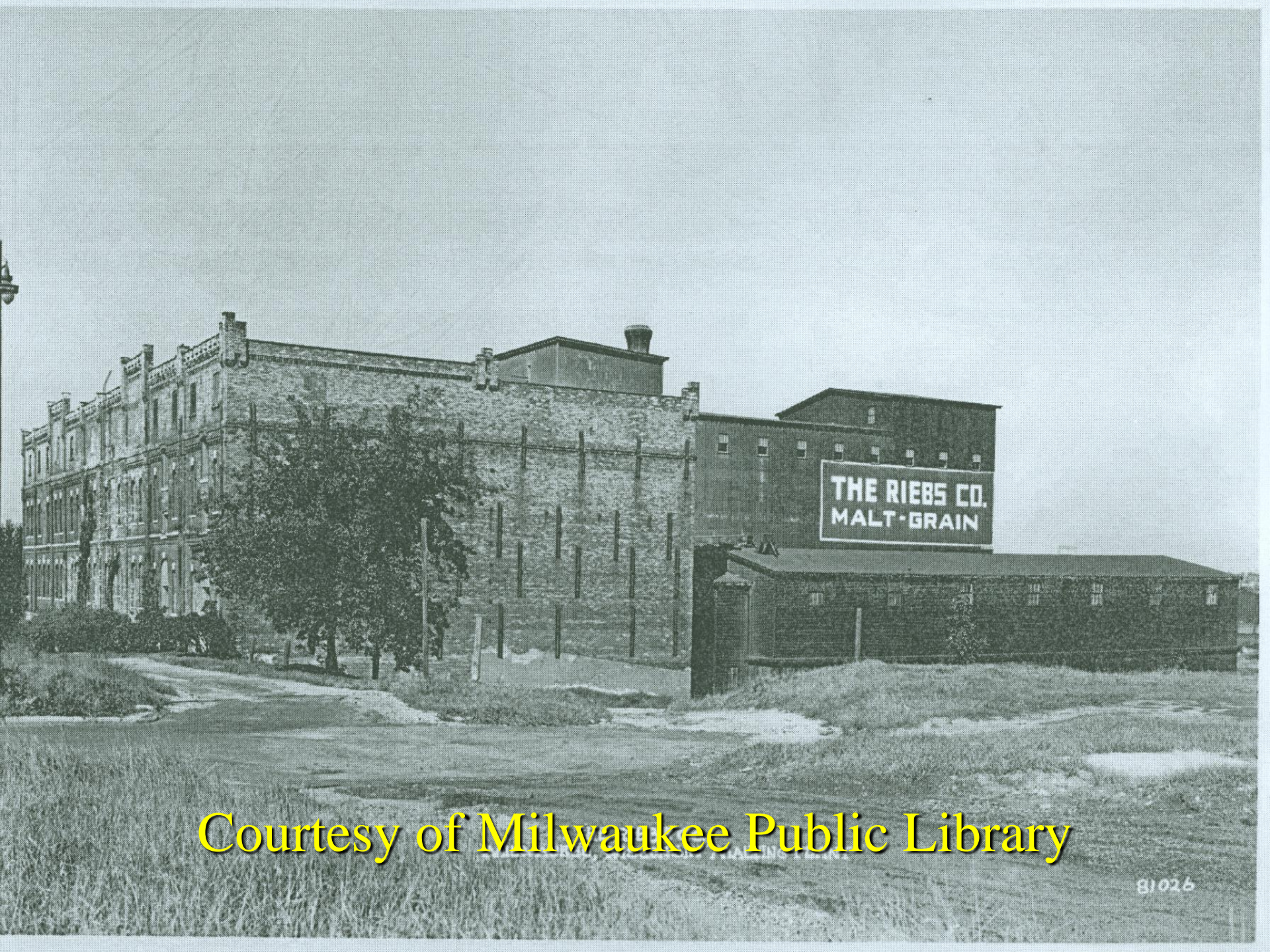




View from Falk Residence

Sanborn 1910-1926





Courtesy of Milwaukee Public Library