





SW 25-8-21  
ATLAS P. 171

# 171 LANDS

171-36

W. FLORIST AVE.



NW Cor.  
1/4 Sec.

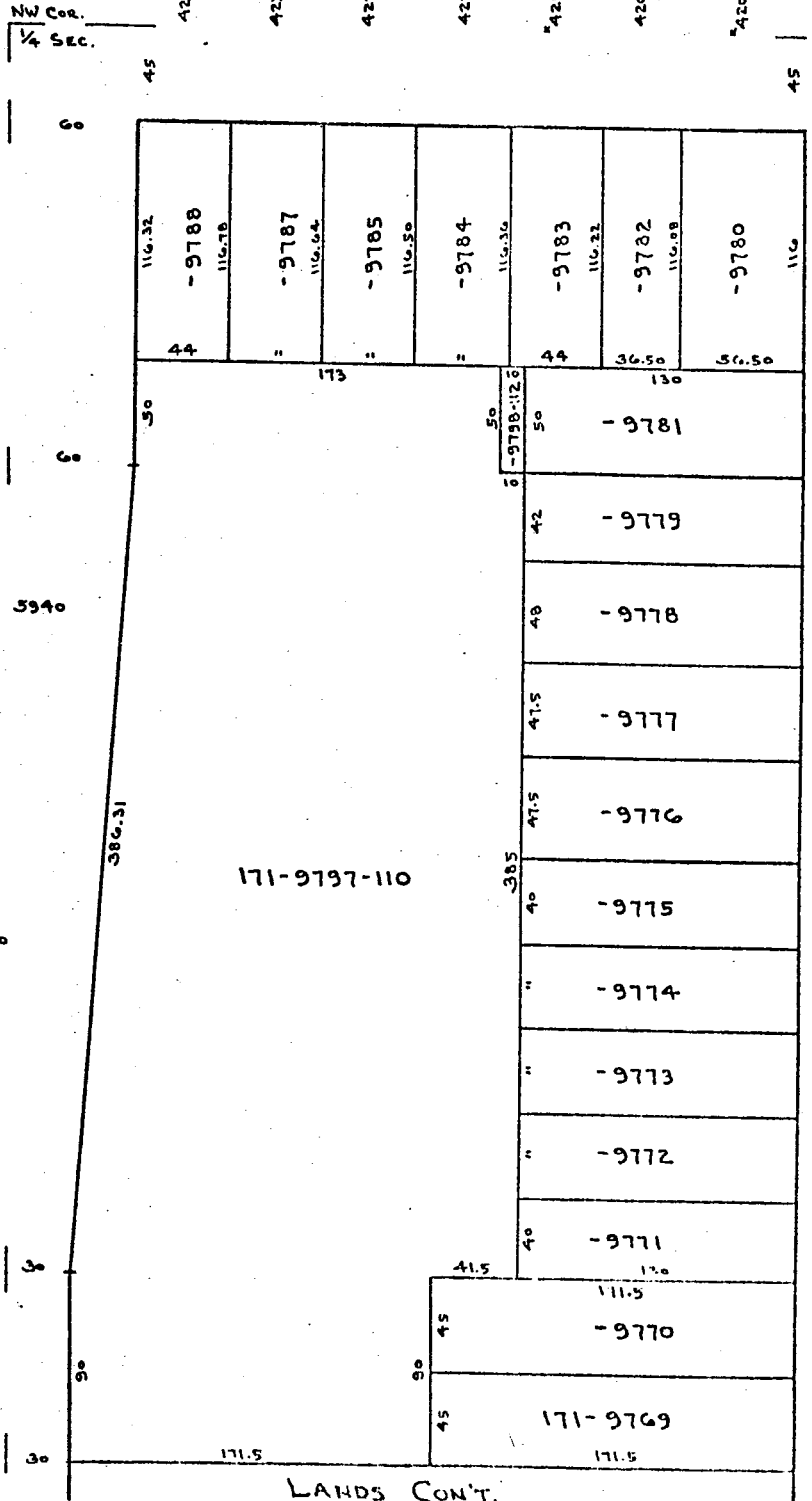
BLVD.

ST.

1125' N. OF  
S. LI. OF N. 1/2

140' N. OF SW  
COR. OF N. 1/2

N. SHERMAN



5940

5886

5961

5955

5949

5943

5937

5931

5925-27

5921

5915

5909

5903

5897

42 21

N

7-3-75

LANDS CONT.  
P. 171-35

NW-32-8-21  
ATLAS P. 104  
INDUSTRIAL PLAT

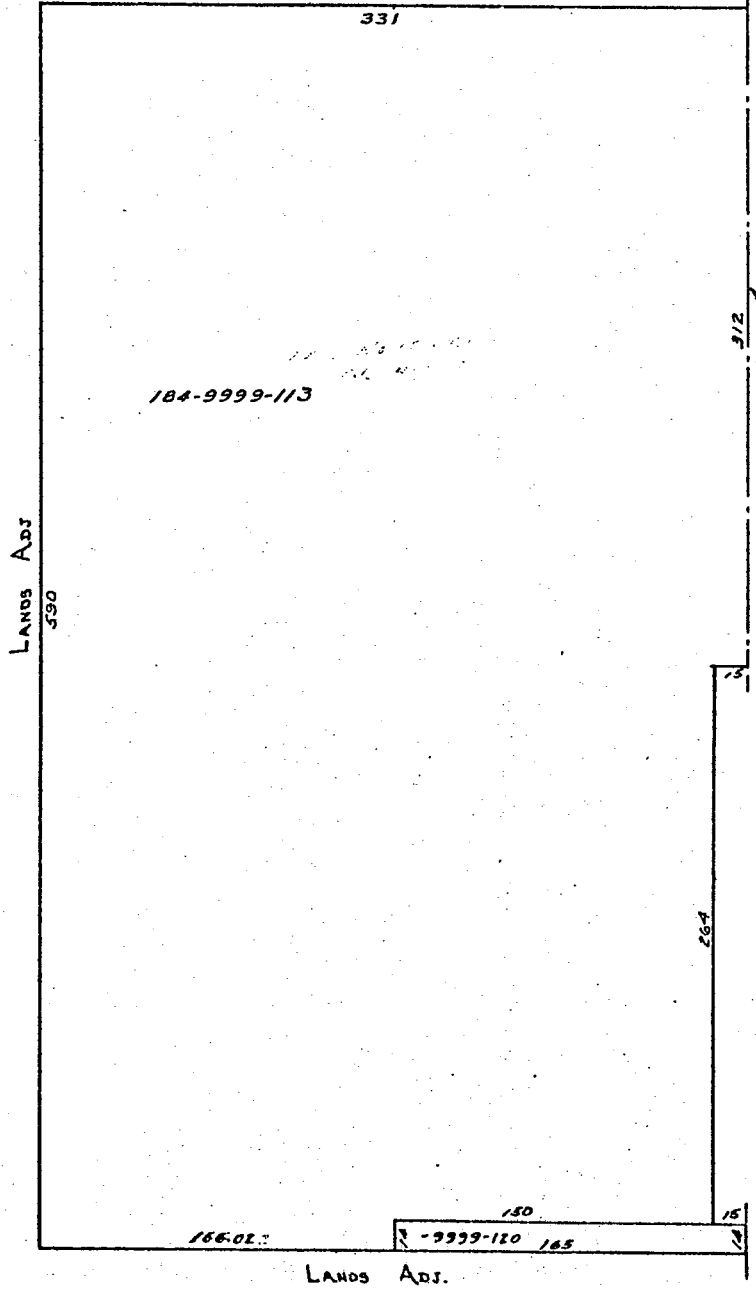
184  
LANDS  
W. SILVER SPRING  
19927

184-01

DR.

NE COR. 1/4 SEC.

ST.



4-15-71  
MICROFILMED

N. 99<sup>TH</sup>

5501

ASSESSMENT SUBD. NO. 87  
VOL 48 PAGE 44

ST.

N. 47 TH

LOT 8 ADJ.		LOT 5 ADJ.	
5062	129.465	5105	129.55
5056	209-0393	*5073-75	1 209-1208 129.51
5050	-0394	5067-69	2 -1209 129.47
5044-46	-0395	5059-61	3 -1210 129.44
5038	-0396	5053-55	4 -1211 129.41
5032-34	209-1223	5045	5 209-1212 129.38
5026-28	-1222	5041	3 209-0401
5020-22	-1221	*5035	10 -0400
5014-16	-1220	5029-31	11 -0399 129.295 129.30
5008-10	-1219	5023-25	1 209-1213 129.27
5000-02	-1218	5017-19	2 -1214 129.24
		5009-11	3 -1215 129.21
		5001-03	4 -1216 129.18
			5 -1217 129.15

PROGRESSIVE SUBD.  
VOL 66 PAGE 17

N. 46 TH

W. FAIRMOUNT AVE.

NW 01-7-21

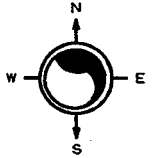
ATLAS P. 229

229

229-01

SCALE 1" = 80'

# NORTH MILWAUKEE SUBDIVISION NO. 1 W HAMPTON AV



4788	30	8	120	30	4	3	2	30	51	4777
	229-1108	229-1107	98	229-1106	229-1105	229-1104	98	229-1103-100	229-1102-100	48.5
	30						40	2.5	229-1101-100	120
	3533 (REAR)	3531 (REAR)	3529-29A 298-29C 3525-25A	3517	3511	3509-09A				
4768	31.07	9	120	30.58	15	30.52	126	44	30.39	4771
	229-1110	229-1111	229-1110	229-1111	229-1112	229-1144	229-1143	43	229-1142	4767
4764	30	10	229-1111	30	229-1142	229-1141	42	4763		
4760		11	229-1112	229-1141	41	4759				
4758		12	229-1113	229-1140	40	4755				
4752		13	229-1114	229-1139	39	4751				
4748		14	229-1115	229-1138	38	4747				
4746		15	229-1116	229-1137	37	4745				
		16	229-1117	229-1136	36	4743				
4736		17	229-1118	229-1135	35	4741				
4732		18	229-1119	229-1134	34	4739				
4728		19	229-1120	229-1133	33	4735				
4724		20	229-1121	229-1132	32	4731				
4720A		21	229-1122	229-1131	31	4727				
4720		22	229-1123	229-1130	30	4723				
4716		23	229-1124	229-1129	29	4719				
4714		24	229-1125	229-1128	28	4713				
4712		25	229-1126	229-1127	27	4709				
4708		26	120	126	27	4707				
4706		30				4705				
4700	30					4703				

N 36TH ST

N 35TH ST

# W COURTLAND AV

N. W. 1-7-21  
ATLAS P. 229

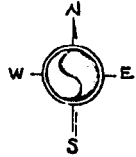
229

229-09

N. MILW. SUBD. NO. 1

W. COURTLAND

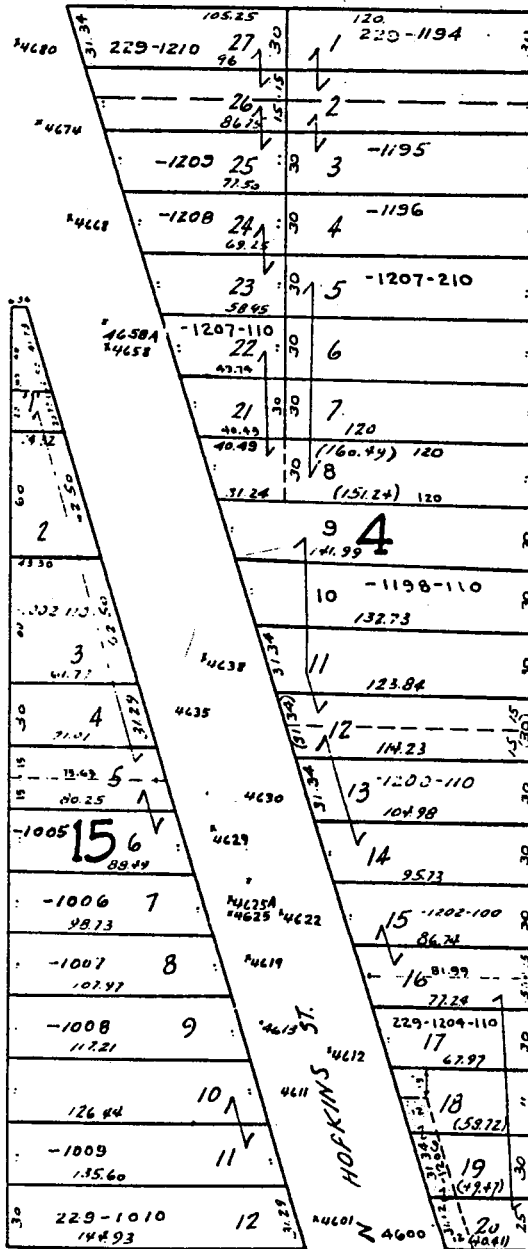
AVE.



N. MILW. LAWNDALE NO. 1

N. THIRTY-SEVENTH

N. THIRTY-SIXTH



4679  
ST.  
4673 GA  
4665-65A  
4663  
4661  
TO  
4655  
4651

MICROFILMED MAR 31 1982

W. GLENDALE

AVE.

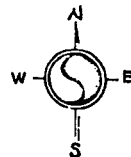
N. W. 1-7-21  
ATLAS P. 229

229

229-09

N. MILW. SUBD. NO. 1

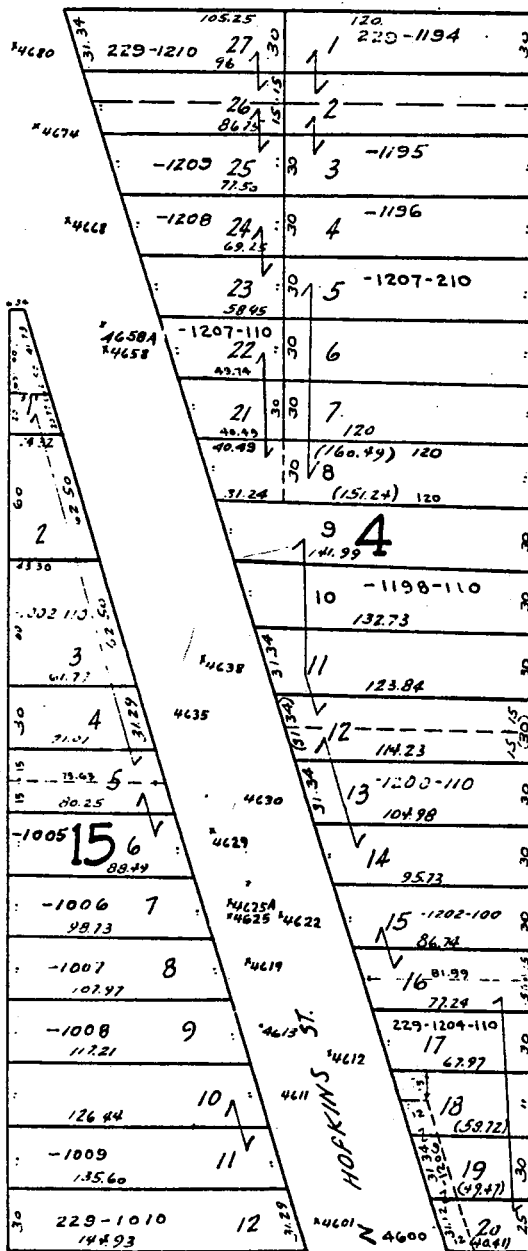
W. COURTLAND AVE.



N. MILW. LAWNDALE NO. 1

N. THIRTY-SEVENTH

N. THIRTY-SIXTH



- 4674
- 4673 SA
- 4665-65A
- 4663
- 4661
- TO
- 4655
- 4651

MAR 31 1982  
MICROFILMED

W. GLENDALE

AVE.



NW 10-7-21  
ATLAS P. 264

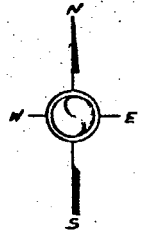
264

264-25

ROYAL PARK VIEW

WL. 59 PAGE 21

SCALE 80'-1"



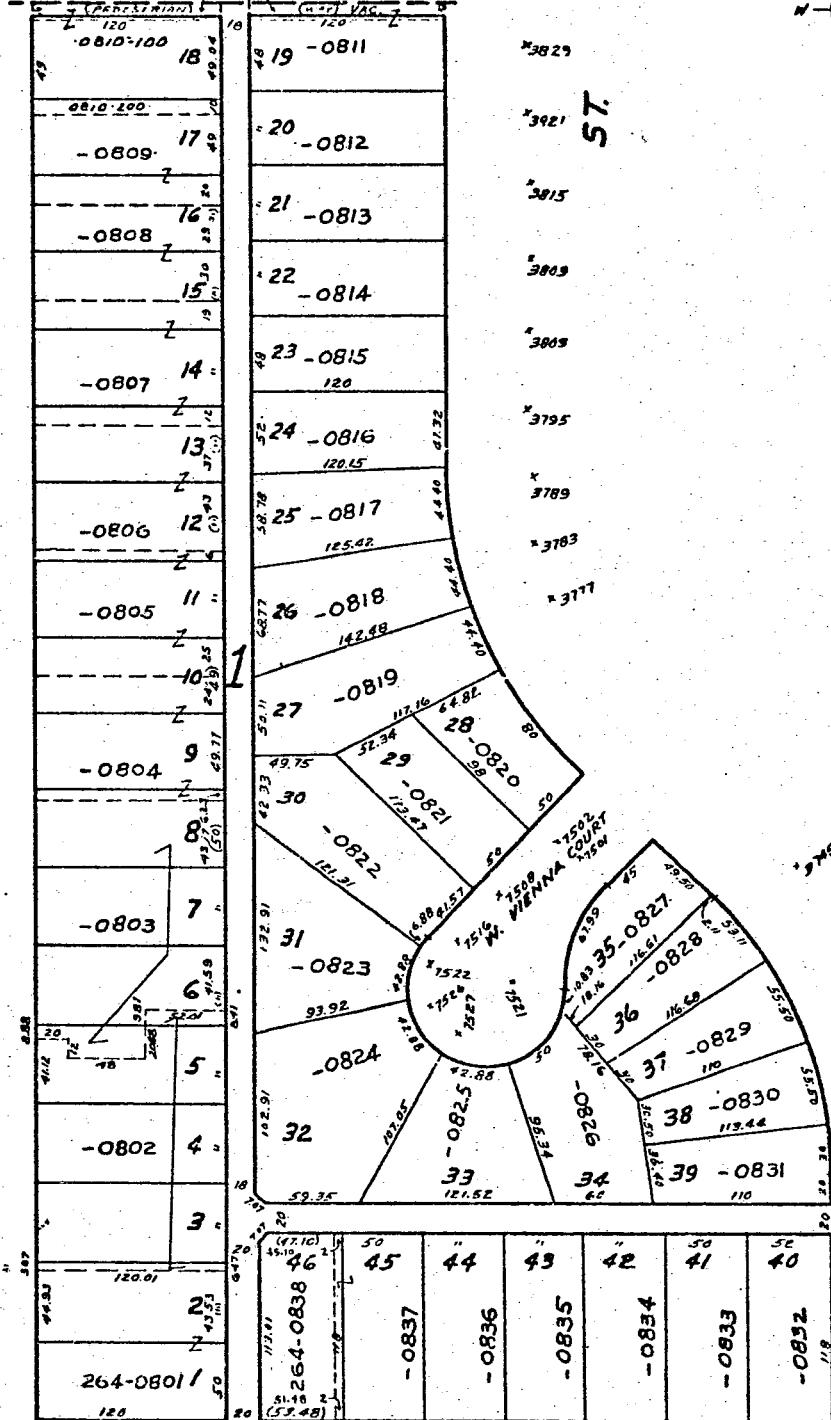
12' EASMT.  
LANDS ADJ.

ST.

ST.

N. 76 TH

N. 75 TH



MICROFILMED

W. NASH

ST.

TR. 1017, 1018, 1019, 1020

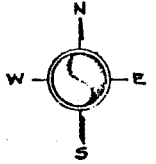
N.E. 10-7-21  
ATL. P. 265

265

265-05

W. NASH

ST



ST

ST

N. SIXTY-FIRST

N. SIXTIETH

SUPREME HEIGHTS  
Vol. 144 Page 46

LANDS

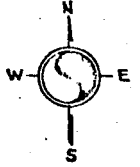
3634	120	20	112.00	20	3633
	92.85	21	265-0291	92.85	
			111.25		
3628		20	2 - 0272	94	3629
			111.50		
3622		19	3 - 0273	95	3623
			112.24		
3616		18	4 - 0274		3617
			110.98		
3612		17	5 - 0275	6	3611
			110.72		
3606		16	6 - 0276		3605
			110.46		
3600		15	7 - 0277		3599
			110.20		
3596		14	8 - 0278		3595
			109.94		
3590		13	9		3589
			109.68		
3584		12	10 - 0280		3583
			109.42		
3578	120	20	265-9977-100	20	3577
			265-9982-200		
3572	120	20		20	3571
3566	118.63	21.36		108.64	3565

MICROFILMED

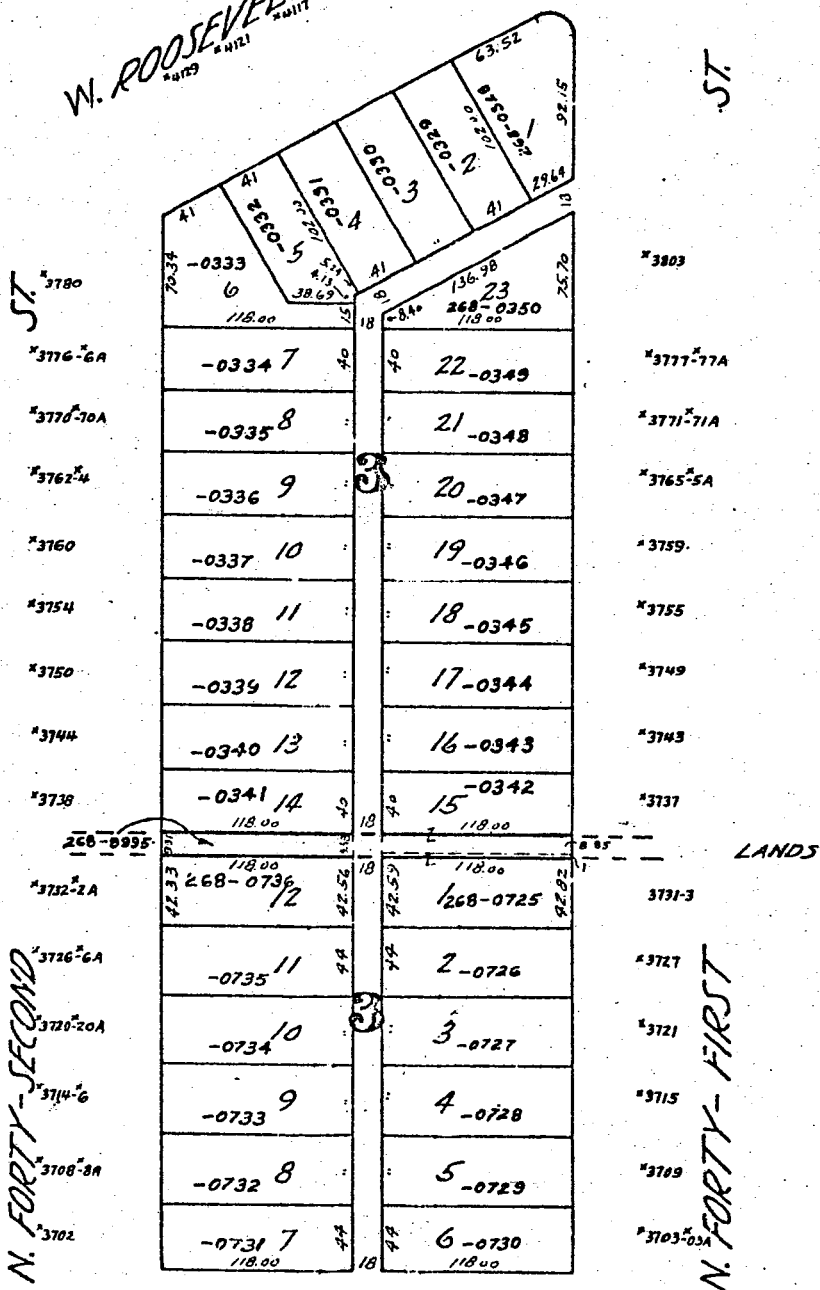
W. KEEFE

AVE. PARKWAY

S.E. COR. 1/4 sec.



W. ROOSEVELT DRIVE



JUHL'S SUBD.  
Vol. 45 Page 81

N. FORTY-SECOND

N. FORTY-FIRST

MICROFILMED

W. NASH

ST.

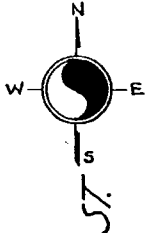
N.W. 12-7-21  
ATLAS P. 268

268

268-32

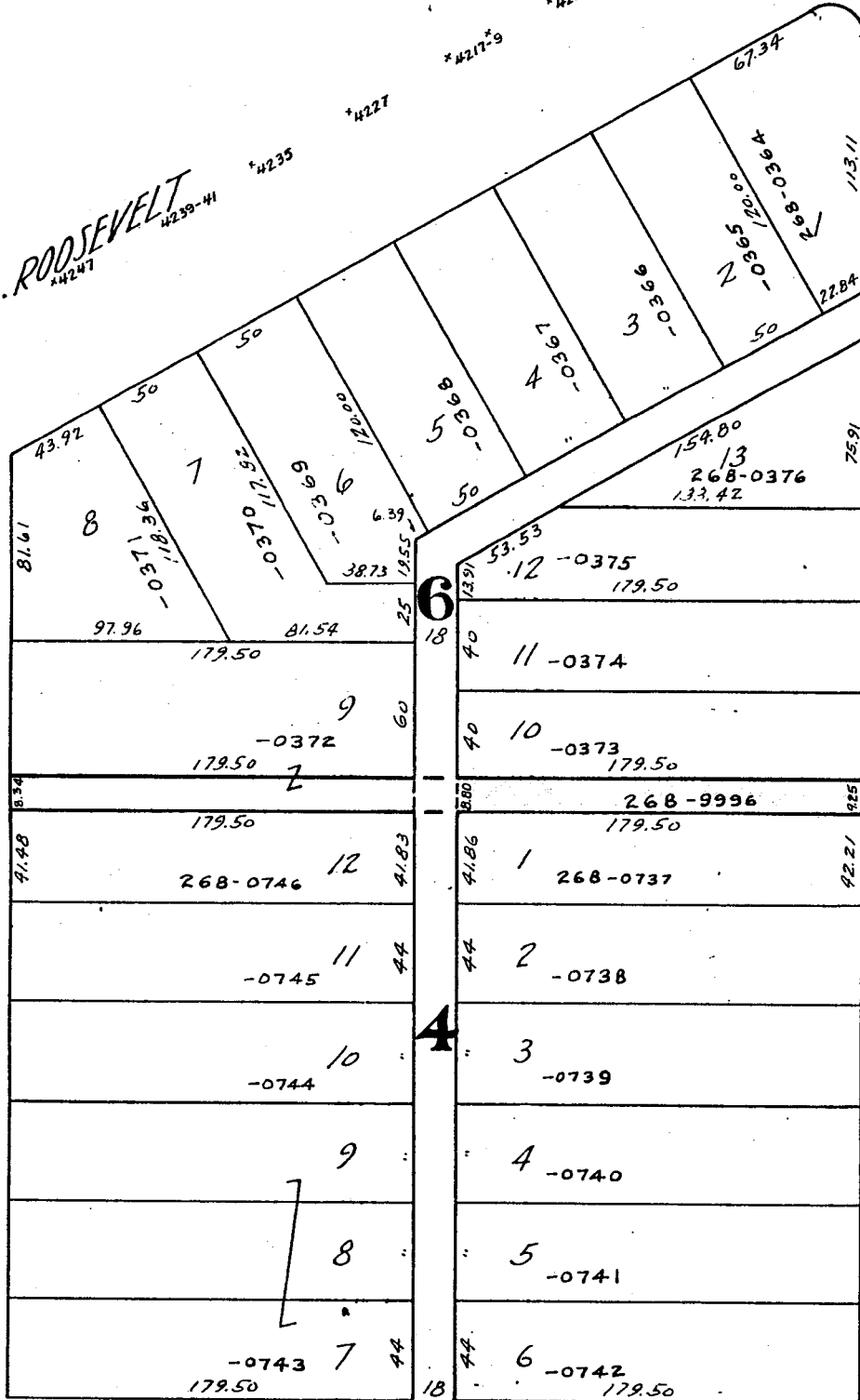
BOULEVARD VIEW

DRIVE



W. ROOSEVELT  
42247 4239-41

BLVD.



N. SHERMAN

W. NASH

ST.

JUHL'S SUBD.

LANDS

N. FORTY - SECOND

\*3738

\*3730-2

\*3726

\*3718-20

\*3712

3708

3700

\*3775

\*3757

\*3749-51

\*3743

\*3737

\*3733

\*3727-27A

3721-21A

3715-15A

3707-9

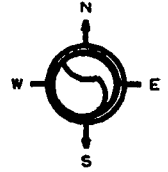
\*3703

5087

NE 08-7-22  
ATLAS P. 273

273

273-21  
SCALE 1" = 80'



LANDS

W NASH ST

N 2ND LA

N 2ND ST  
KEEFE AVENUE SUBD. NO. 1

		213			
		118.40		76.80	
	45	273-9982-100-8	45	273-0311	3633
3626	37.50		37.50	273-0312	3625
3624		273-9980		273-0313	
3620	37.50	273-9979	37.50		3621
3614	60	273-9978-100	60	273-0314	3617
3606 ADJ	15	273-9976-120-X	15	273-0315	3609
3606	45	273-9976-110-2	45	273-0316	3605
3600	45	273-9975	45	273-0317-100-8	3603
3540		273-9974			
3538					3535
3534A	45	273-9973	45	273-0319	
3534				273-0320	
3528	30	273-9972	30		3531
3522	30	273-9971	30	273-0321	3525
	39	273-9970	39		
		118.40		76.80	
220	37.40		36	25	25
	126	273-9969		25	26.8
218	45	273-9968		25	
	126	273-9967		25	
214	36			25	
208	25			25	
	120			25	
	16			17	
	25			18	
200	26.8			26.8	

W KEEFE AV

S.E. 8-7-22 ATLAS P. 282  
 Burke & Ogden's Subd.  
 N 13 P. 27

282

V. 22 P. 40  
 JAC. TRUSS SUBD.

282-08

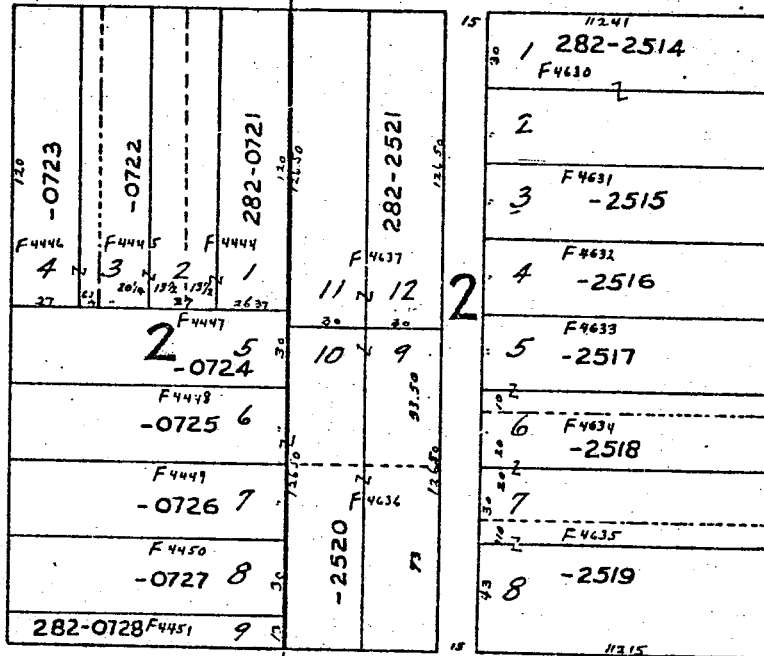
Scale 1" = 50'



E. Concordia Ave.  
 129-31 133 139 143

N. ACHILLES ST.

3264  
 3260  
 3256  
 3252  
 3250



3283

3275

3271  
 3269

3267  
 3265

3261

(ISLAND AVE.)

N. Palmer St

E. RING ST.  
 144-8 162-4

MICROFILMED

F4430A Dropped For 1951

S.E. 12-7-21

ATLAS P. 286

286

286-22

CLIMAX SUBD.

MANUFACTURING PLANT STATE



3276	286-0032/20 ALLEY 1/2	14	1	286-0018-100	* 3275
3270	-0030	13	2		
*3266	-0029	12	3	-0020-100-1	3269
*3262	-0028	11	4		ST.
3260 3258	-0027	9	5	-0022-100-2	* 3261
3254 3252	286-0026	8	6	-0024	3257 3255
3250 3248	-0426	26	7	286-0025	3253
3246 3244	-0425	25	1	286-0401	3249
3242 3240	-0424	24	2	-0402	3245
3238	-0423	23	3	-0403	3241
3234	-0422	22	4	-0404	3237
3230	-0421	21	5	-0405	3233
3226	-0420	20	6	-0406	3229
3220	-0419	19	7	-0407	3225
3214	-0418	18	8	-0408	3221
3210	-0416	16	9	-0409	3215
3204	-0415	15	10	-0410	3213
3200	286-0414	14	11	-0411	3209
			12	-0412	3207
			13	286-0413	3203

N. 35 TH

N. 34 TH

W. AUER

3418 Fond du Lac Ave. Heights

AVE.



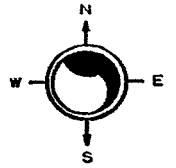


SE 13-7-21  
ATLAS P. 326

326

326-33  
SCALE 1" = 80'

PRUSSIAN HEIGHTS



W CENTER ST

	3415-17	3411	3407	3403	3401			
2672	37 1	30 2	3 3	4 4	5 5	6 6	30 7	37 8
	120			326-1401-100	326-1404	326-1405	326-1405	120
	37	30					30	37

N 35TH ST

2660	30	38	120	30	14	30	120	9	30	2661
2658			326-1435				326-1407			2659
2656		37	326-1434				326-1408	10		2657
2654										2655
2650		36	326-1433				326-1409	11		2651
2646		35	326-1432				326-1410	12		2649
		34					326-1411	13		2643
2640		33	326-1430-100-6				326-1412	14		2641
		32		1515			326-1413	15		2635
2632A		31	326-1429				326-1415-100-4	16		2627
2632		30	326-1428					17		2623
2626		29	326-1427-100-2				326-1416	18		2619
2624		28	326-1426-100-4				326-1417	19		2617
2618		27	326-1425				326-1418	20		2615
2614		26	326-1424				326-1419	21		2613
2610		25	326-1423				326-1420	22	30	2607
2606	30	24	326-1422				326-1421	23	30	2605
2602	43.42	120					120		43.42	2603
2600					3430					

N 34TH ST

W CLARKE ST



N.E. 6-6-22  
ATLAS P. 460

460

460-20

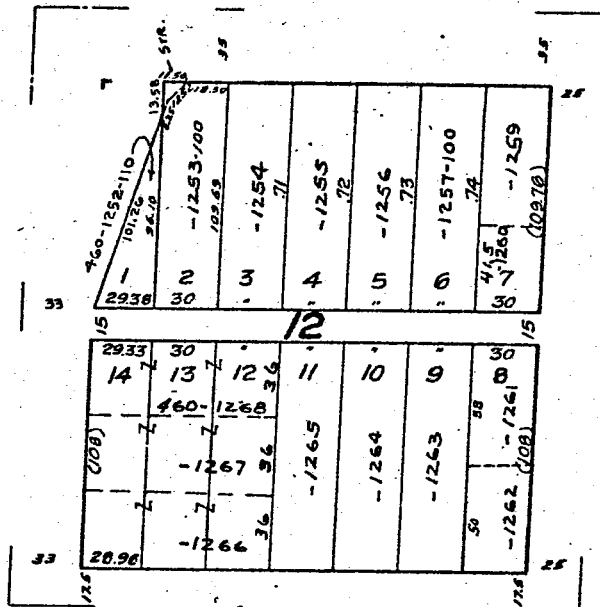
D.G. ROGERS & GEO. BURNHAM'S SUBD. No 3



W. LAPHAM BLVD.  
1577 1573 1867 1865 1938 1555 1551  
1575 1555A-RANK

ST.

S. 10TH  
1616  
1618  
1622  
1624  
1628



PLACE

1613

S. 15TH  
1621  
1627  
1629

W. ODELL ST.  
1562 1560 1554

MICROFILMED 7-31-74

72  
168  
108  
12

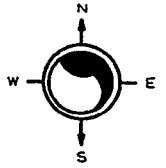
NW 05-6-22

ATLAS P. 461

461

461-29

SCALE 1" = 80'

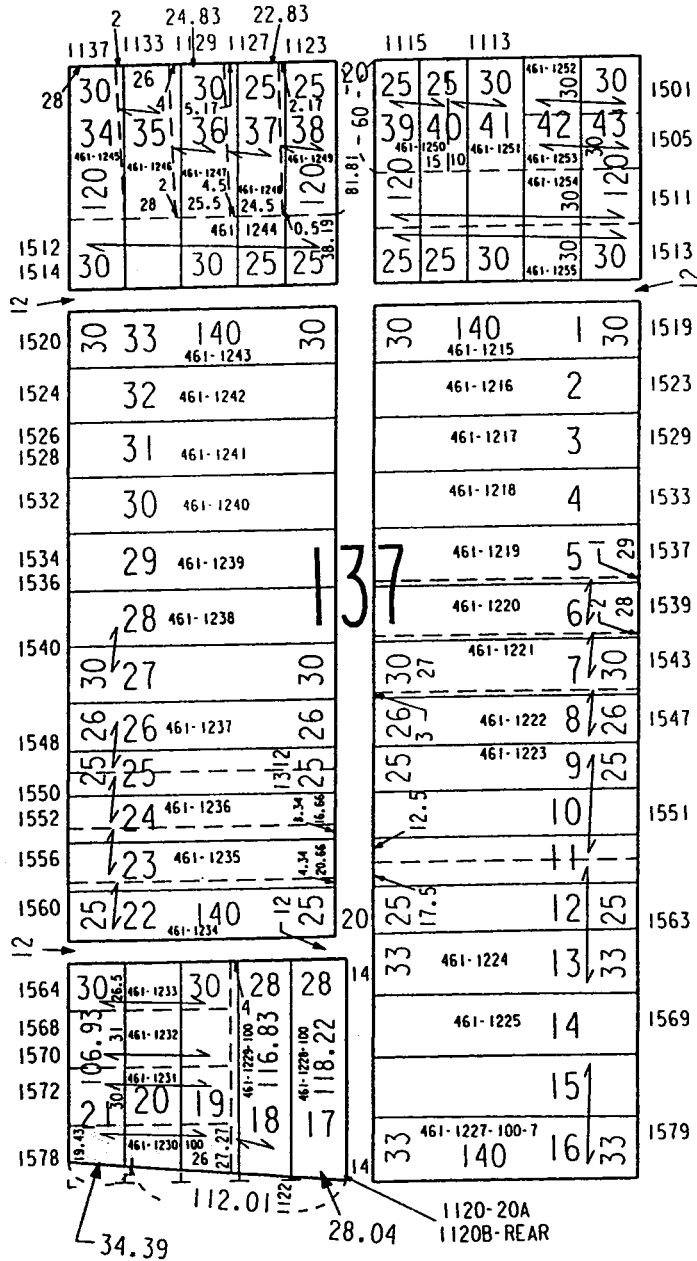


# L. W. WEEK'S SUBDIVISION

## W ORCHARD ST

S 12TH ST

S 11TH ST



## W LAPHAM BL

UREXEL HEIGHTS  
535

W. HOLT AVE.



\*3400  
\*3404  
ST. \*3410  
\*3414  
3420  
\*3428  
\*3434  
\*3436  
3442  
\*3446  
3454  
\*3456  
S. 20<sup>TH</sup> ST.  
3468

\*3403  
\*3409-31  
ST.  
\*3415  
3421  
\*3425  
\*3433  
\*3437  
3445  
3447  
3453  
3457  
3461  
S. 19<sup>TH</sup> ST.

12	125.46 (137.46)	15	125
12	535-0054 .62	15	20 535-0069
12	-0056 2 : .79	15	19
12	-0057 3 : .96	15	18 -0068
12	-0058 138.13 4 : .7	15	17
12	-0059 5 : .30	15	16 -0067
12	-0060 7 : .63	15	15 -0066
12	-0061 9 : .97	15	14 -0065
12	-0062 10 : .57	15	13
12	139.14 20 : .7	15	12 -0064
12	535-0361/39.05	15	11 -0063
12	-0360 18 : .44	15	125
12	-0359 17 : .63	15	1 535-0348
12	-0358 16 : .82	15	2 -0349
12	-0357 14 : .20	15	3 -0350
12	-0356 140.78 11 : .50	15	4
12		15	5 -0351
12		15	6 -0352
12		15	7 40 43 42
12		15	8 -0353 -0354 -0353
12		15	9
12		15	10 125

1930  
W. MORGAN

1918 1908 1900  
AVE.

GLADY'S TERRACE

W. HOLT

AVE.



*3400	125.46 (137.46)	15	125	*3403
	535-0054 .62	30	20 535-0069	
	-0056 2	15	19	
	.79	7	18 -0068	
	-0057 3	15	17	
	.96	7	16 -0067	
	-0058 138.13	20	15 -0066	
	.30	15	14 -0065	
	-0059 6	15	13	
	.46	7	12 -0064	
*3404	-0060 7	15	11 -0063	*3409-3A
	1 .63	7	125	
	-0061 9	30	1 535-0348	
	.97	7	2 -0349	
	-0062 10	30	3 -0350	
	139.14	15	4	
	138.86	15	5 -0351	
	535-0361/39.05	15	6 -0352	
	.79	7	7 40 43 42	
	.24	7	8 -0354 -0353	
-0360 18	15	9		
.44	7	10		
*3410	-0359 17	15	125	*3415
	.63	7		
	-0358 16	15		
	.82	7		
	-0357 14	15		
	140.01	7		
	.20	7		
	-0356 13	12		
	.40	7		
	12	7		
12	7			
*3414	140.78	12		*3421
	140.01	7		
	-0356 11	12		
	.59	7		
	-0356 11	12		
	.59	7		
	-0356 11	12		
	.59	7		
	-0356 11	12		
	.59	7		
-0356 11	12			
3420	140.78	12		*3425
	140.01	7		
	-0356 11	12		
	.59	7		
	-0356 11	12		
	.59	7		
	-0356 11	12		
	.59	7		
	-0356 11	12		
	.59	7		
-0356 11	12			
*3428	140.78	12		*3433
	140.01	7		
	-0356 11	12		
	.59	7		
	-0356 11	12		
	.59	7		
	-0356 11	12		
	.59	7		
	-0356 11	12		
	.59	7		
-0356 11	12			
*3432	140.78	12		*3437
	140.01	7		
	-0356 11	12		
	.59	7		
	-0356 11	12		
	.59	7		
	-0356 11	12		
	.59	7		
	-0356 11	12		
	.59	7		
-0356 11	12			
*3436	140.78	12		*3445
	140.01	7		
	-0356 11	12		
	.59	7		
	-0356 11	12		
	.59	7		
	-0356 11	12		
	.59	7		
	-0356 11	12		
	.59	7		
-0356 11	12			
3442	140.78	12		*3447
	140.01	7		
	-0356 11	12		
	.59	7		
	-0356 11	12		
	.59	7		
	-0356 11	12		
	.59	7		
	-0356 11	12		
	.59	7		
-0356 11	12			
*3446	140.78	12		3453
	140.01	7		
	-0356 11	12		
	.59	7		
	-0356 11	12		
	.59	7		
	-0356 11	12		
	.59	7		
	-0356 11	12		
	.59	7		
-0356 11	12			
*3454	140.78	12		*3457
	140.01	7		
	-0356 11	12		
	.59	7		
	-0356 11	12		
	.59	7		
	-0356 11	12		
	.59	7		
	-0356 11	12		
	.59	7		
-0356 11	12			
*3456	140.78	12		3461
	140.01	7		
	-0356 11	12		
	.59	7		
	-0356 11	12		
	.59	7		
	-0356 11	12		
	.59	7		
	-0356 11	12		
	.59	7		
-0356 11	12			
3468	140.78	12		S. 19 <sup>TH</sup>
	140.01	7		
	-0356 11	12		
	.59	7		
	-0356 11	12		
	.59	7		
	-0356 11	12		
	.59	7		
	-0356 11	12		
	.59	7		
-0356 11	12			

ST.

ST.

S. 20<sup>TH</sup>

S. 19<sup>TH</sup>

W. MORGAN

AVE.

GLADY'S TERRACE

1/10-28



N.W.-16-6-22  
ATLAS P. 538

538

538-19  
SCALE 1" = 80'

E. OHIO

AVE.



THOMAS CABEEN'S SUBD.

S. WHITNALL

AVE.

S. GRIFFIN  
INDIAN MOUNDS

BEING A RESUBD. OF LOTS 1 TO 15, BOTH INCL., IN BLK 5, THOMAS CABEEN'S SUBD. AND LOTS 1 TO 15, BOTH INCL., IN BLK 6, BRADLEY'S SUBD. IN THE NW 1/4 SEC. 16-6-22; ALSO ALL OF BLK 1 AND LOTS 1 TO 13, BOTH INCL., IN BLK 6 RAPID TRANSIT LOTS NO. 2 AND A PART OF THE SW 1/4 16-6-22  
VOL. 63 PAGE 3

3304	157.61 (149.61)	42	31	41.40	120	538-1001	47.53
3306	140.28 (152.28)	44	15	41.40	120	-1002	
3312-4	141.43 (153.43)	40	15	41.40	120	-1003	
3316-8	194.20	39		41.40	120	-1004	
3320-2	195.50	38		41.40	120	-1005	
3324-8	157.12	37		41.40	120	-1006	
3328	-0490 158.33	36		41.40	120	-1007	
3332	159.54	35		41.40	120	-1008	
3336-42	-0489 160.76	34		41.40	120	-1009	
3340	-0488 161.97	33		41.40	120	-1010	
3344	538-0487 164.33	31		41.40	120	-1011	
3348	538-0488-200 165.64	30		41.40	120	-1012	
3352	166.91	29		41.40	120	-1013	
3356	168.03	28		41.40	120	-1014	
3360	169.24	27		41.40	120	-1015	
3364	170.45	26		41.40	120	-1016	
3368	171.66	25		41.40	120	-1017	
3372	172.87	24		41.40	120	-1018	
3376	174.08	23		41.40	120	-1019	
3380	175.29	22		41.40	120	-1020	
3384	176.50	21		41.40	120	-1021	
3388	177.71	20		41.40	120	-1022	
3392	178.92	19		41.40	120	-1023	
3396	180.13	18		41.40	120	-1024	
3400	181.34	17		41.40	120	-1025	
3404	182.55	16		41.40	120	-1026	
3408	183.76	15		41.40	120	-1027	
3412	184.97	14		41.40	120	-1028	

MICROFILMED 2-16-72

E. HOLT  
BRADLEY'S SUBD.

AVE.  
MUNICIPAL SUBD.  
NO. 6

430-434  
435-444  
446  
450



N.W.-16-6-22  
ATLAS P. 538

538

KEY NOS. P

538-20



E. HOLT

AVE.

BRADLEY'S SUBD.  
VOL. 17 PAGE 6

S. WHITNALL

AVE.

\*3402

\*3444

3414

3416

3420-2

3424

3428

3436

3440

3444

3456

182.38	30	34.81	120	
538-0042-100	1	34.81	538-1011	48.06
183.61	29	34.81		
184.76	28	34.81	2 -1012	
-0040-100	27	34.81	3 -1013	
187.06	26	34.81	4 -1014	
-0039	25	34.81	5 2-1015	
188.21	24	34.81	6 -1016	
-0038	23	34.81	7 -1017	
189.36	22	34.81	8 -1018	
-0037	21	34.81	9 538-1019	120
190.51	20	34.81		
-0036	19	34.81		
191.66	18	34.81		
(192.81)	17	34.81		
-0034	16	34.81		
(193.96)	15	34.81		
-0033	14	34.81		
(195.11)	13	34.81		
-0032	12	34.81		
196.26	11	34.81		
(197.41)	10	34.81		
538-0029	9	34.81		
(198.56)	8	34.81		
-0030	7	34.81		
199.71	6	34.81		
200.86	5	34.81		
202.01	4	34.81		
203.16	3	34.81		
204.31	2	34.81		
205.46	1	34.81		

AVE.

\*3405

\*3409

\*3415

3423

\*3429

\*3435

\*3443

\*3449

S. GRIFFIN

INDIAN MOUNDS

BEING A RESUBD. OF LOTS 1 TO 15, BOTH INCL., IN BLK. 5, THOMAS CABEEN'S SUBD. AND LOTS 1 TO 15, BOTH INCL., IN BLK. 6, BRADLEY'S SUBD. IN THE NW 1/4 SEC. 16-G-22; ALSO ALL OF BLK. 1 AND LOTS 7 TO 13, BOTH INCL., IN BLK. 6, RAPID TRANSIT LOTS NO. 2 AND A PART OF THE SW 1/4 SEC. 16-G-22

E. MORGAN

420

538-0031-200 STR.

\*436-38

AVE.