

Traffic Accidents in the City of Milwaukee:

2012 Experience and Current Trends

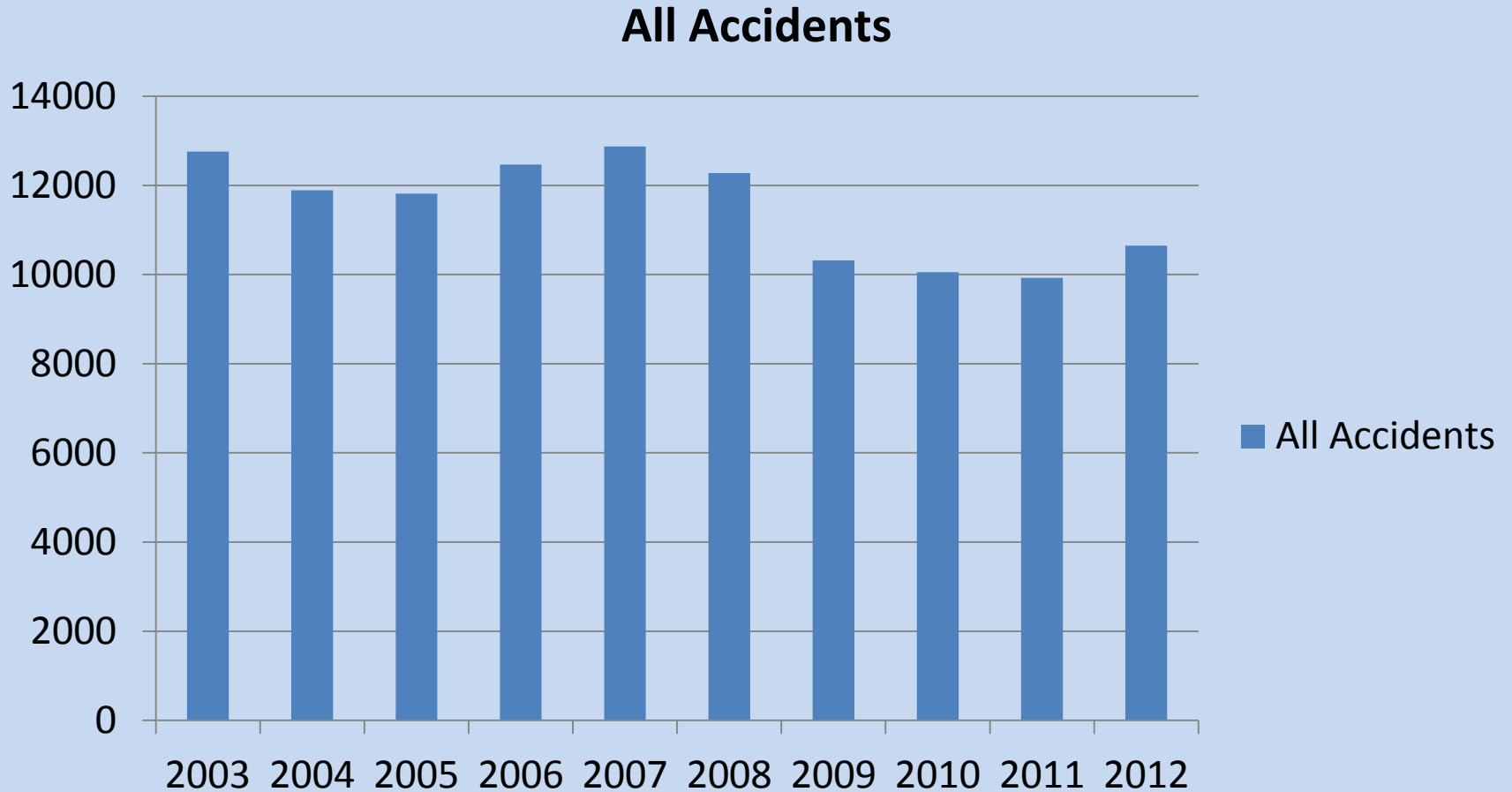
2012 Crash Totals

• Total Crashes	10,464
– Fatal	35
– Nonfatal Injury	3,483
– Property Damage Only	6,946

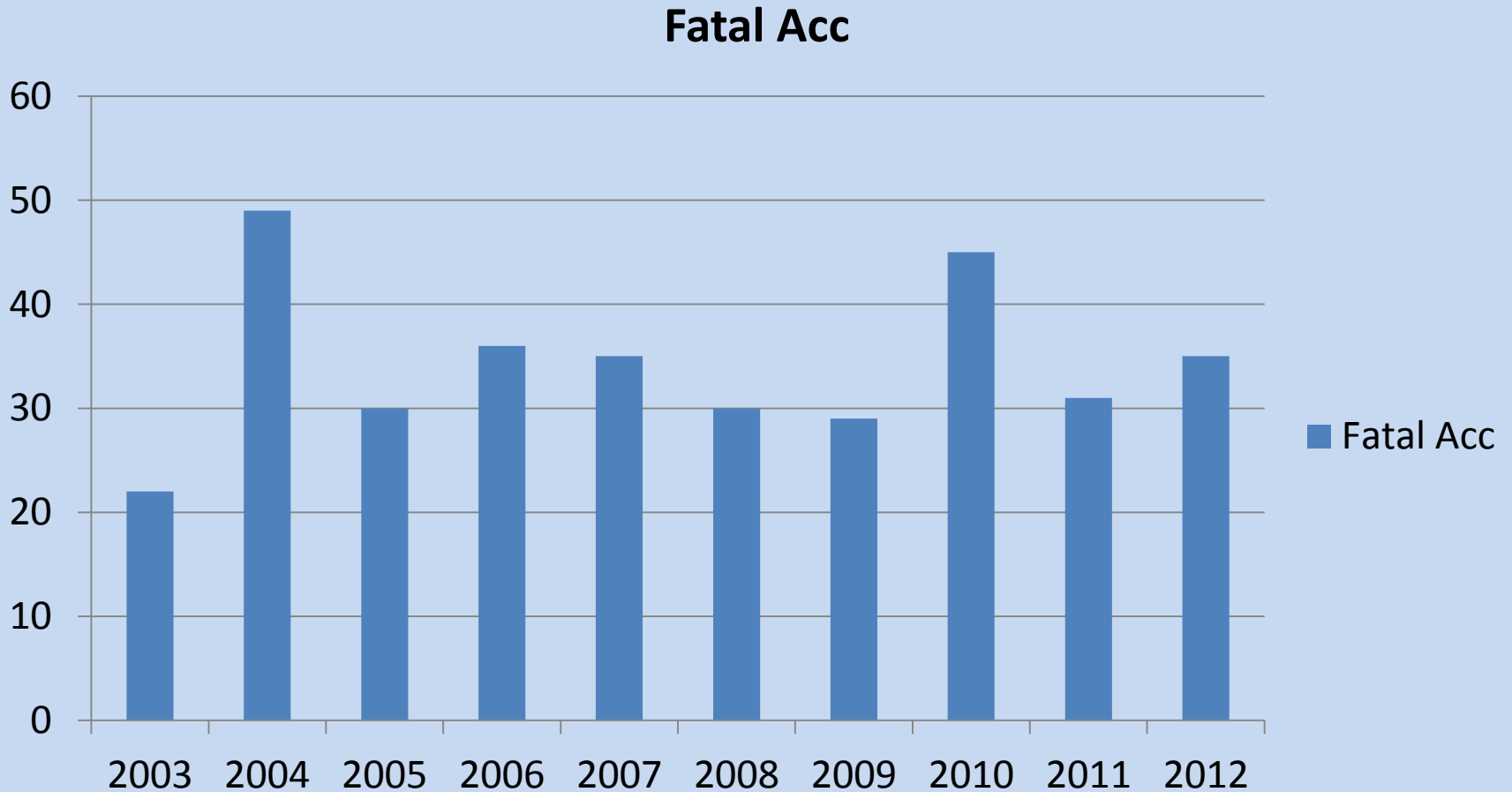
Fatal Crashes by Aldermanic District: 2012

#1	Alderman Ashanti Hamilton	2
#2	Alderman Joe Davis	6
#3	Alderman Nik Kovac	0
#4	Alderman Robert J. Bauman	5
#5	Alderman James A. Bohl, Jr.	3
#6	Alderman Milele A. Coggs	3
#7	Alderman Willie C. Wade	2
#8	Alderman Robert G. Donovan	1
#9	Alderman Robert W. Puente	2
#10	Alderman Michael J. Murphy	1
#11	Alderman Joe Dudzik	1
#12	Alderman Jose G. Perez	5
#13	Alderman Terry L. Witkowski	2
#14	Alderman Tony Zielinski	3
#15	Alderman Willie L. Hines. Jr.	1
	Total	37

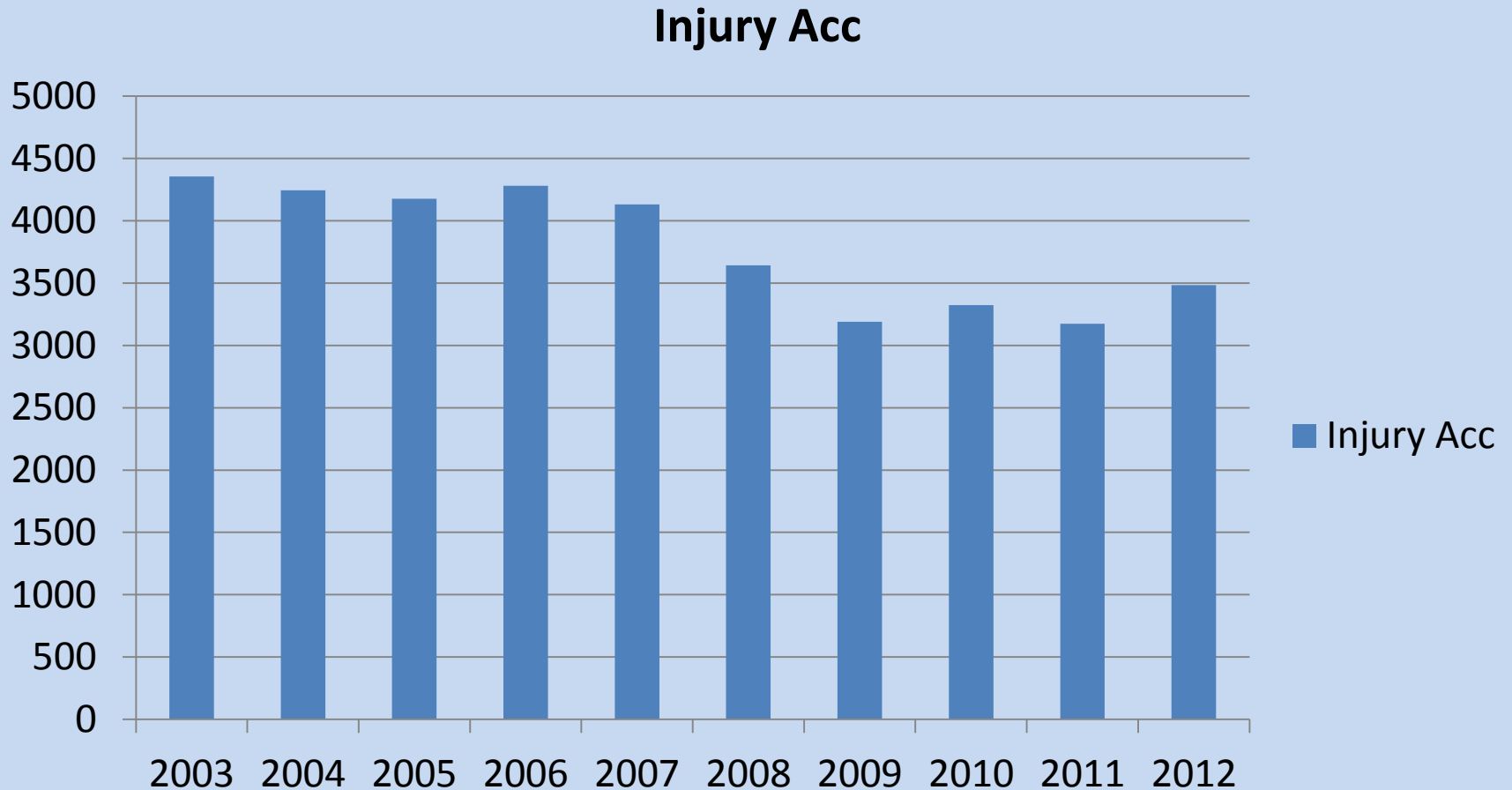
Crash Frequency: 2003 through 2012



Fatal Crashes: 2003 through 2012



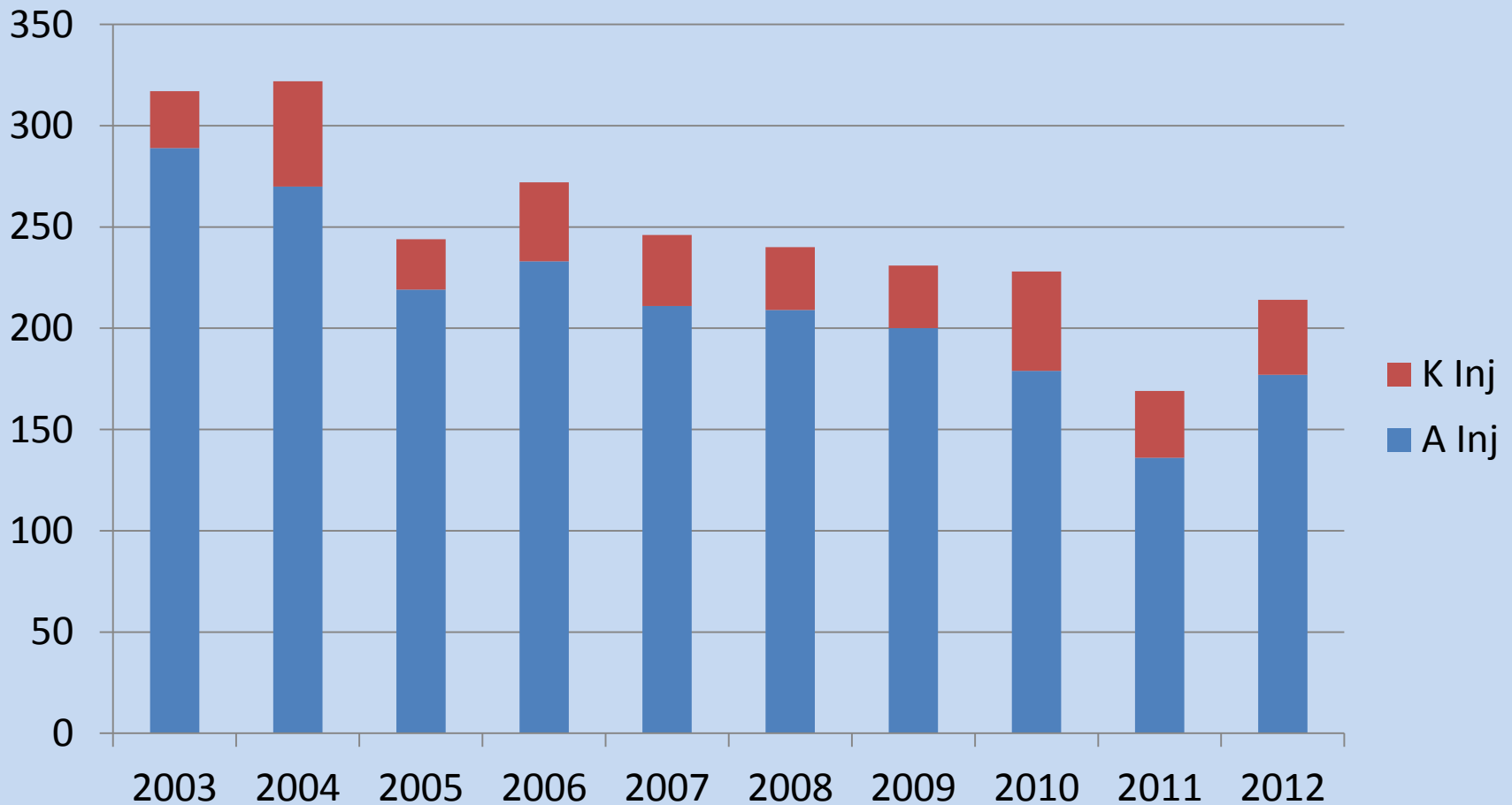
Injury Crashes: 2003 through 2012



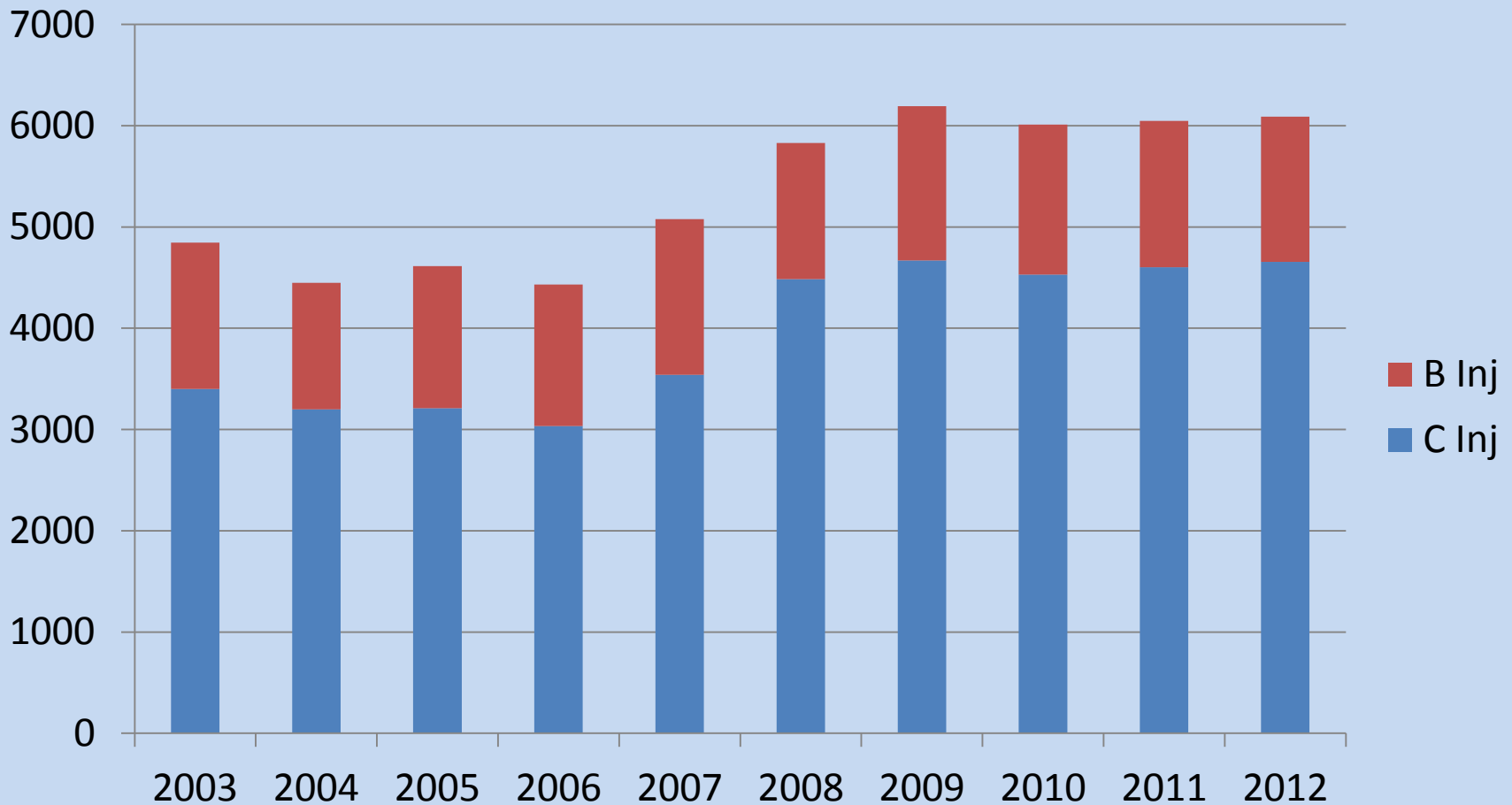
2012 Persons Injured by Severity

• Killed (K)	37
• Incapacitating Injury (A)	177
• Non-Incapacitating Evident Injury (B)	1,445
• Possible Injury (C)	3,399
• Total Persons Killed or Injured	5,058

Incapacitating Injuries: 2003 through 2012



Nonincapacitating Injuries: 2003 through 2012



2012 Pedestrian and Bicyclist Injuries

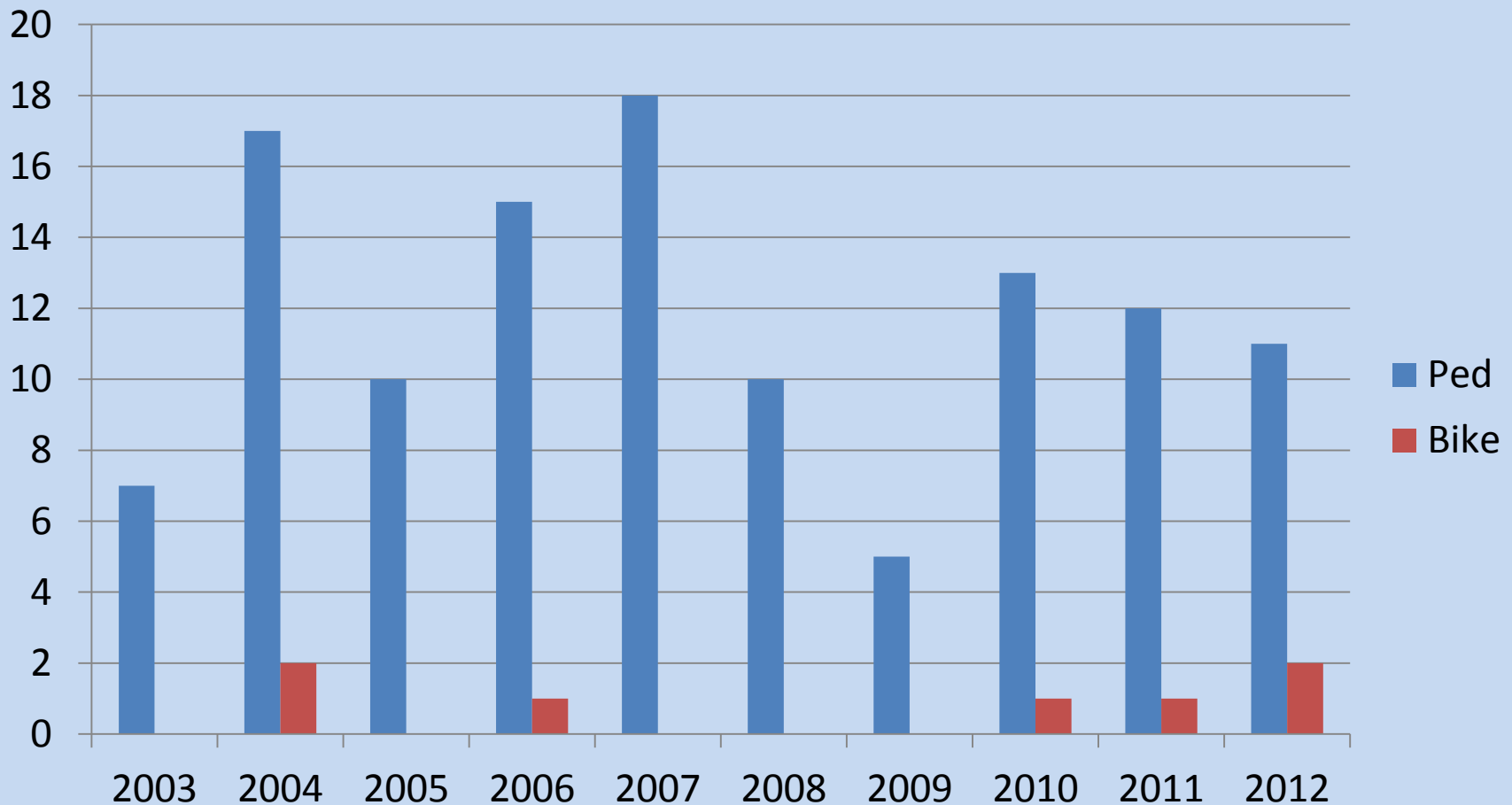
- Pedestrians

– Killed	11
– Injured	<u>423</u>
– Total	434

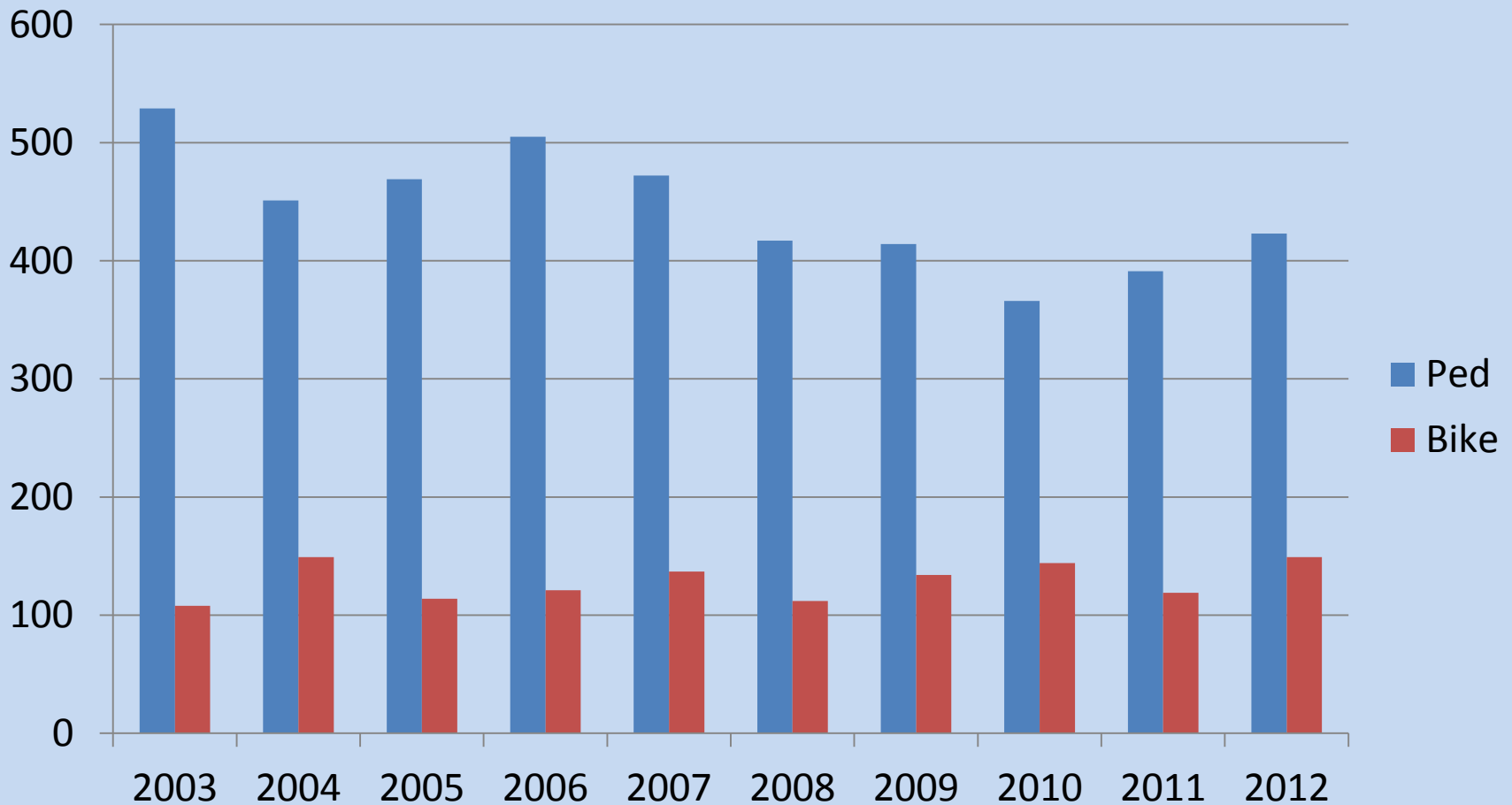
- Pedalcyclists

– Killed	2
– Injured	<u>149</u>
– Total	151

Pedestrian and Bicyclist Fatalities: 2003 through 2012



Non-Fatal Pedestrian and Bicyclist Injuries: 2003 through 2012



Contributing Circumstances in 2012

Traffic Crashes

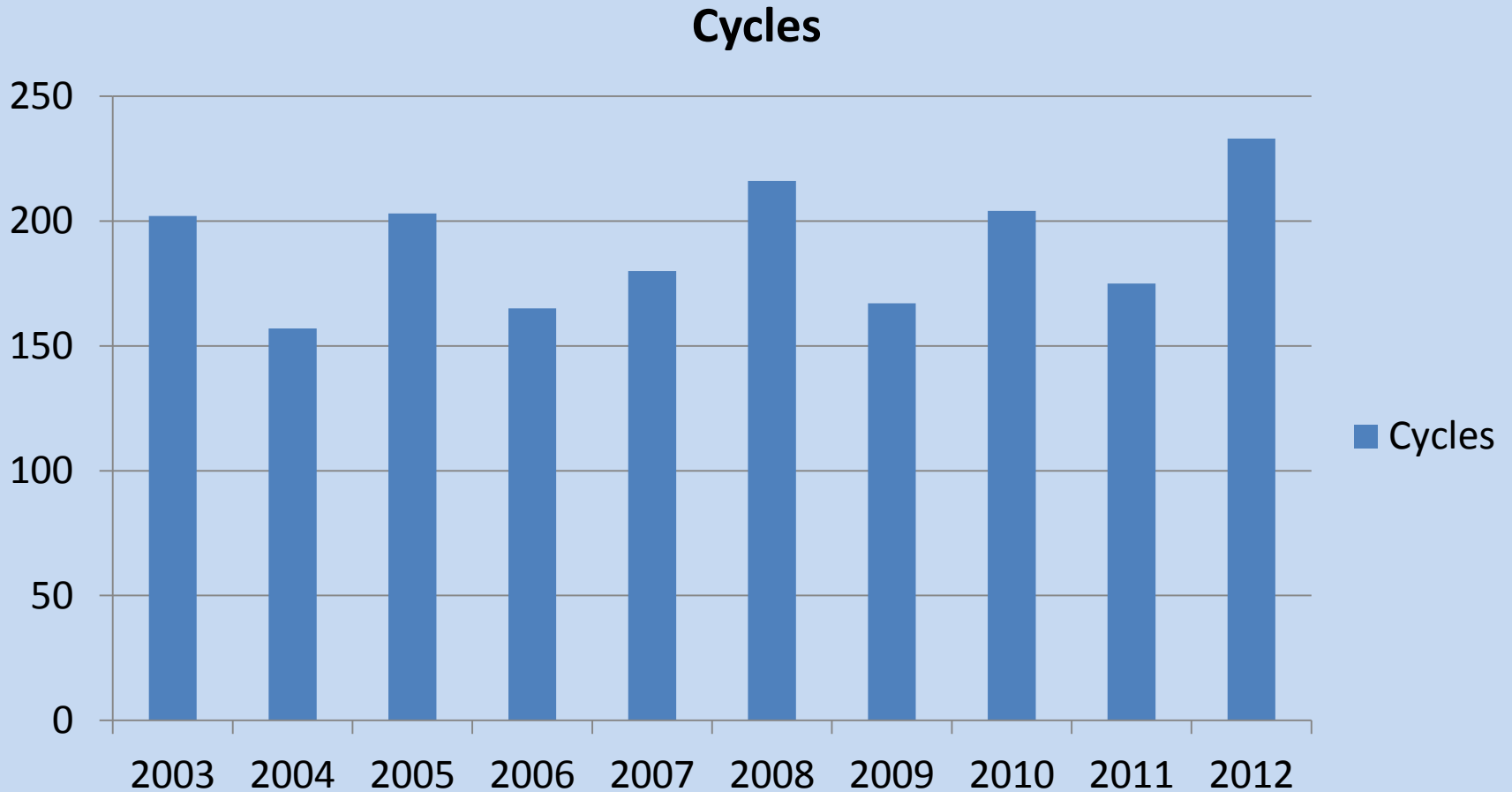
• Road Defect	2,571 (26%)
• Failed to Yield Right of Way	2,304 (23%)
• Driver Inattention	2,056 (20%)
• Disregarded Traffic Signal	883 (9%)
• Followed Too Closely	575 (6%)
• Excessive Speed	412 (6%)
• Speed Too Fast for Conditions	372 (3%)
• Improper Turn	337 (2%)
• Other	538 (5%)

Contributing Circumstances in 2012

Fatal and Injury Accidents

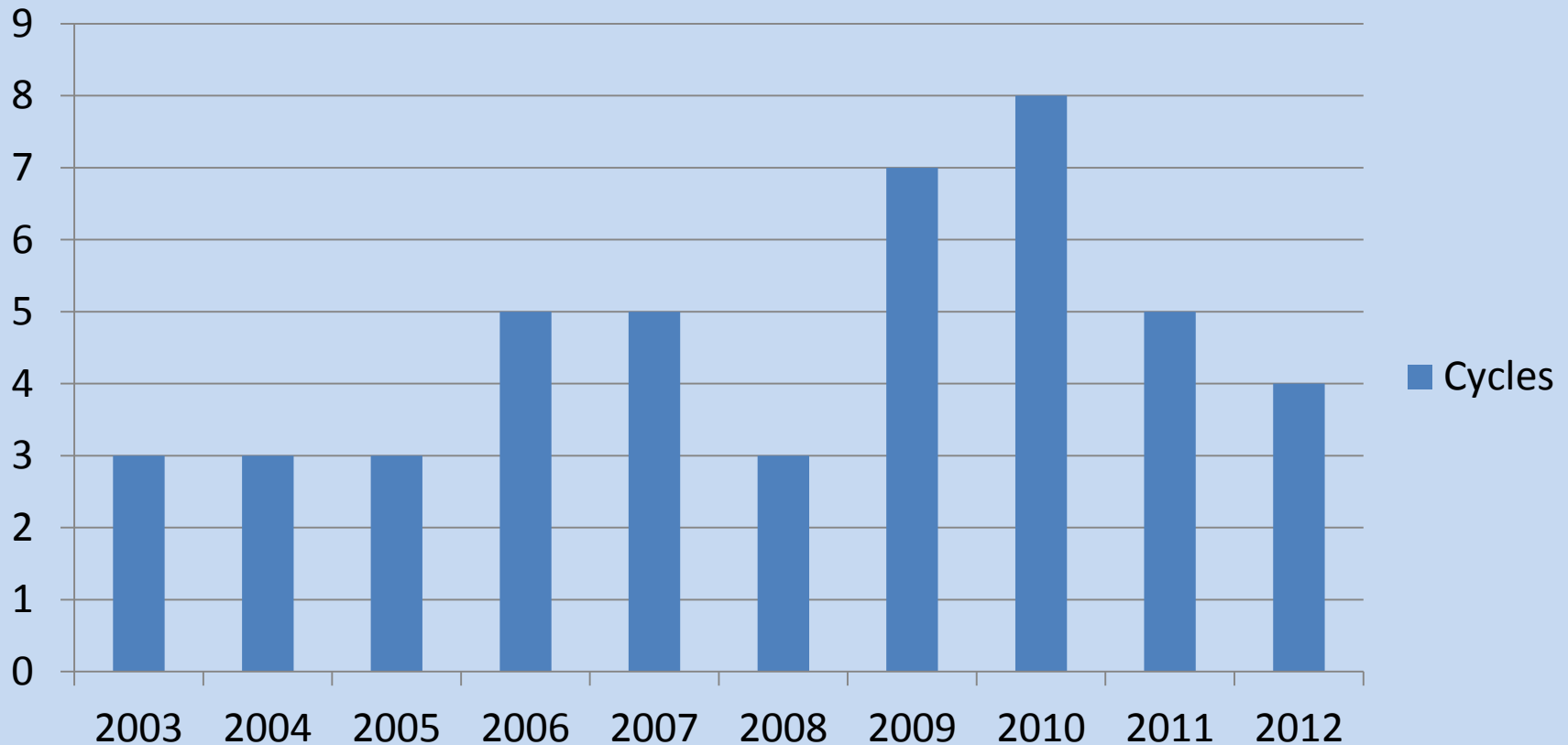
• Failed to Yield Right of Way	998 (28%)
• Road Defect	833 (24%)
• Driver Inattention	677 (19%)
• Disregarded Traffic Signal	392 (11%)
• Followed Too Closely	225 (6%)
• Excessive Speed	181 (5%)
• Speed Too Fast for Conditions	121 (3%)
• Other	91 (2%)

Motorcycles Involved in Crashes: 2003 through 2012

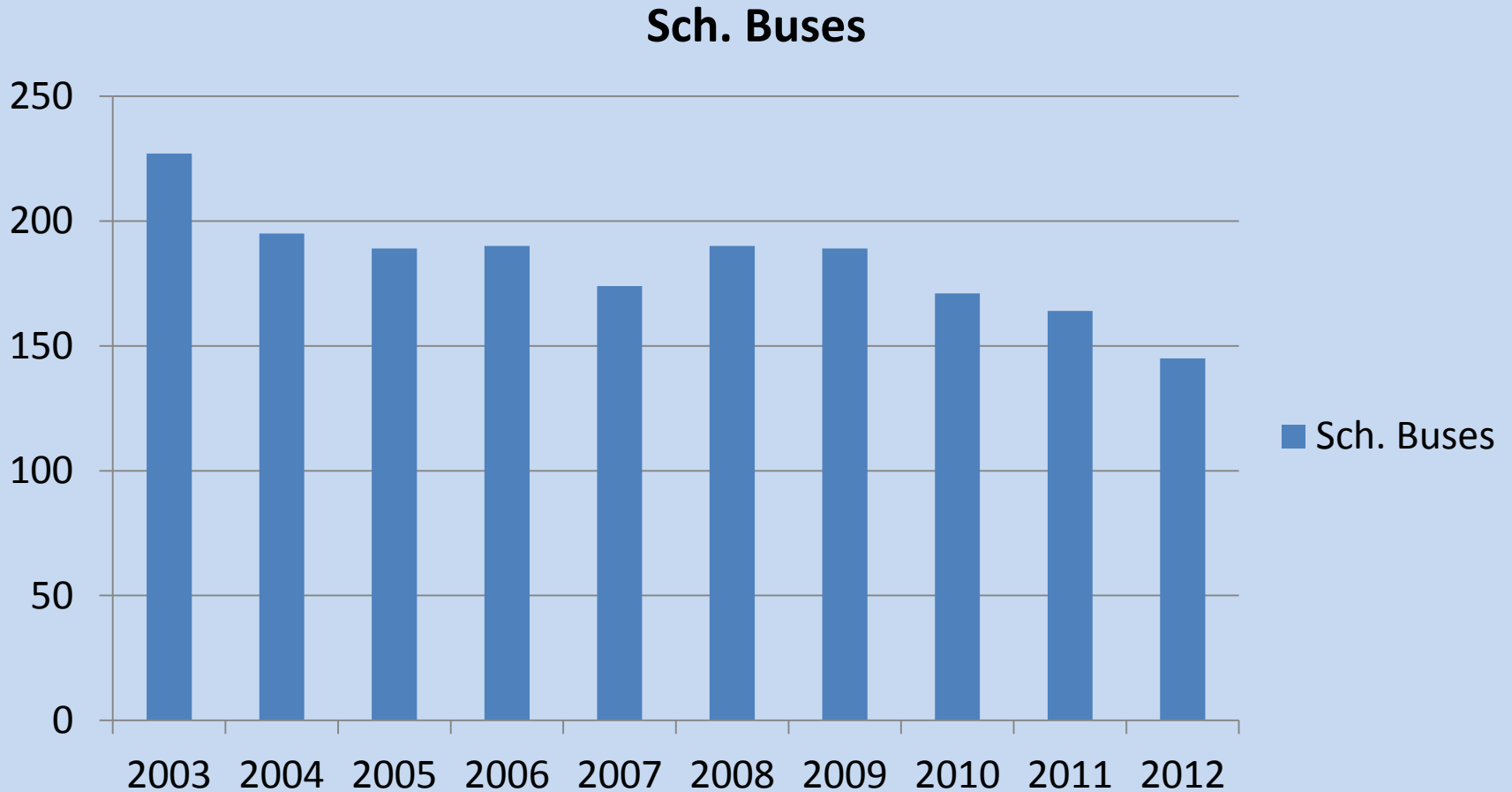


Motorcycles Involved in Fatal Crashes: 2003 through 2012

Cycles



School Buses Involved in Crashes: 2003 through 2012



DPW Traffic Engineering Unit

**Developing and
Implementing Accident
Countermeasures**

DPW Traffic Engineering Unit

Accident Identification and Surveillance Program

Digital Crash Database

- Milwaukee Police Department Submits Accident Reports to Wisconsin DOT
- Wisconsin DOT Provides Monthly Extract of Milwaukee Crash Data to the City
- Data Supplemented by Non-Reportable Crash Data Provided by Police
- City Maintains Historical Electronic Database of Crashes (Dating to Early 1970's)

Historical Crash Database

- Utilized for:
 - Crash Frequency Monitoring
 - Roadway Design
 - Crash Reporting
 - Investigation of Complaints Related to Issues of Safety
 - Selection of Appropriate Traffic Control Devices
 - Information Provided to Milwaukee Police Department (On Request) For Target Enforcement Campaigns
 - Work with Milwaukee Police Department to Develop and Implement Safety Programs

2012 Year to Date Intersection Crash Frequency (through December 2012)

TRAFFIC SIGNAL CONTROL

Obs	onid	atid	_FREQ_
1	S Cesar E Chavez Dr	W Greenfield Av	24
2	W Center St	N 27th St	24
3	W Layton Av	S 20th St	23
4	W Burleigh St	N 27th St	22
5	W Mc Kinley Av	N 6th St	22
6	W Center St	N 35th St	21
7	W Capitol Dr	W Fond du Lac Av	20
8	S Cesar E Chavez Dr	W National Av	19
9	W Oklahoma Av	S 27th St	18
10	W Wisconsin Av	N 27th St	18
11	W Burleigh St	N Sherman Bd	17
12	W Mill Rd	N 76th St	17
13	W North Av	N 20th St	17
14	W Vliet St	N 35th St	17

2012 Year to Date Intersection Crash Frequency (through December 2012)

STOP SIGN CONTROL

Obs	onid	atid	_FREQ_
1	W Appleton Av	W Perkins Pl	11
2	E Kenilworth Pl	N Prospect Av	9
3	W Fond du Lac Av	F7643	8
4	W Adler St	S 84th St	7
5	W Meinecke Av	N Sherman Bd	7
6	W Auer Av	N 35th St	6
7	E Brady St	N Water St	6
8	W Capitol Dr	N 19th St	6
9	W Capitol Dr	N 77th St	6
10	W Capitol Dr	N 78th St	6
11	W Center St	N 30th St	6
12	W Cherry St	N 27th St	6
13	N Farwell Av	E Kenilworth Pl	6
14	W Lisbon Av	N 53rd St	6

2012 Year to Date Intersection Crash Frequency (through December 2012)

YIELD CONTROL

Obs	onid	atid	_FREQ_
1	N Arlington Pl	E Brady St	5
2	W Garfield Av	N 22nd St	3
3	W Melvina St	N 54th Bd	3

2012 Year to Date Midblock Crash Frequency (through December 2012)

MIDBLOCK LOCATIONS				
Obs	onid		atid	_FREQ_
1	N 76th St		4800	8
2	W Capitol Dr		700	8
3	N Teutonia Av		4000	8
4	N 27th St		900	7
5	N 27th St		3100	7
6	S 27th St		3000	7
7	S 27th St		3100	7
8	N 60th St		4900	7
9	S 76th St		3100	7
10	W Fond du Lac Av		4300	7
11	W Layton Av		100	7
12	W North Av		700	7
13	N Sherman Bd		2700	7
14	N 27th St		2800	6

Accident Countermeasure Implementation

- Major Cost Improvements Implemented Under Federal Aid Programs (Primarily Highway Safety Improvement Program (HSIP))
- Low Cost Treatments Funded Under City Capital Improvement and Operations and Maintenance Program Initiatives
- Programmatic Safety Improvements funded under the Federal HSIP and CMAQ Programs

AAA Road Improvement Demonstration Project (RIDP)

- Partnership with AAA Wisconsin
 - Partnership Authorized by Common Council in June, 2004
 - Perform Intersection Safety Audits at High Frequency Accident Locations
 - Develop Countermeasures to be Implemented to Reduce Accidents
 - Provide Peer Review of Current City Practices in Application of Traffic Control Devices
 - Currently Working on Pilot Test of US Road Assessment Program (usRAP) to Evaluate Safety Performance of All City Arterials