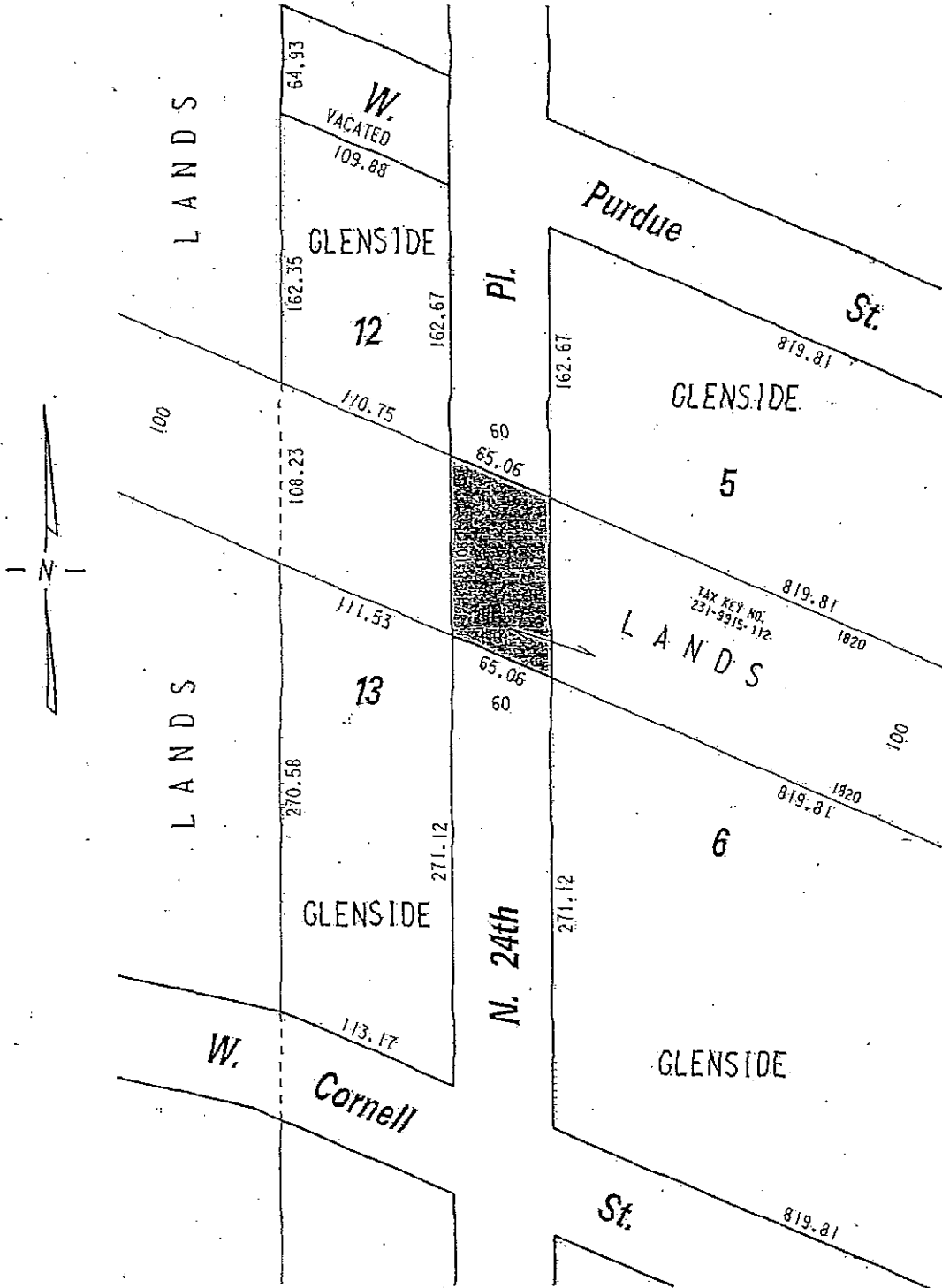


N.W. 1/4 SEC. 6, T.7N., R.22E.

231

FN 131115  
Exhibit A



 PROPERTY TO BE ACQUIRED FOR PUBLIC STREET PURPOSES

FILE NO.  
 INFRASTRUCTURE SERVICES DIVISION  
 MILWAUKEE, WISCONSIN

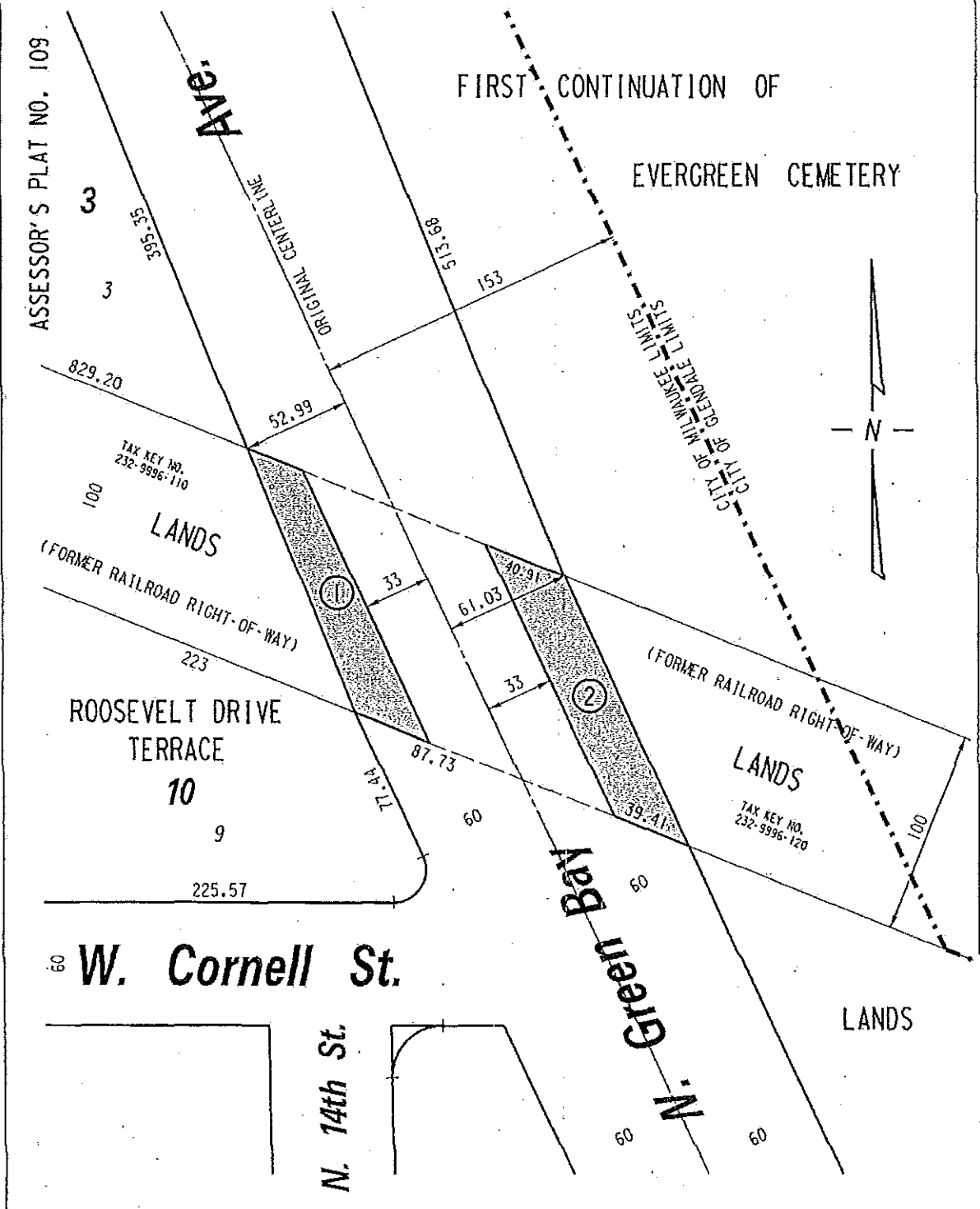
ASSIGNED TO: W.E. FUCHS      CH'K'D. BY: W.E. FUCHS  
 DRAWN BY: W.E.F.              DATE: JAN. 11, 2013  
 PROJECT/GRANT NO.: WK52360082      SCALE: 1" = 80'  
 APPROVED BY:

*Maria Cornell*  
 CENTRAL DRAFTING & RECORDS MANAGER

*[Signature]*  
 CITY ENGINEER

N.E. 1/4 SEC. 6, T.7N., R.22E.

232



 PROPERTY TO BE ACQUIRED FOR PUBLIC STREET PURPOSES

**FILE NO.**  
**INFRASTRUCTURE SERVICES DIVISION**

MILWAUKEE, WISCONSIN

ASSIGNED TO: W.E. FUCHS      CH'K'D. BY: W.E. FUCHS  
 DRAWN BY: W.E.F.              DATE: OCT. 28, 2013  
 PROJECT/GRANT NO.: WK52360083      SCALE: 1" = 60'  
 APPROVED BY:

*Marcia Cornell*  
CENTRAL DRAFTING & RECORDS MANAGER

*Jeffrey S. Polush*  
CITY ENGINEER