



City of Milwaukee

200 E. Wells Street
Milwaukee, Wisconsin
53202

Meeting Minutes RECYCLING TASK FORCE

PRESTON COLE, CHAIR

Ald. Joe Dudzik, Michael J. Daun, Lisa Schaal, and Erick Shambarger

Staff Assistant, Terry MacDonald

Phone: (414)-286-2233; Fax: (414) 286-3456, E-mail: tmacdo@milwaukee.gov

Monday, September 14, 2009

1:30 PM

Room 301-A, City Hall

Meeting convened: 1:36 P.M.

Present 4 - Cole, Dudzik, Shambarger and Schaal

Excused 1 - Daun

1. Roll call

Also present: James Carroll, Legislative Reference Bureau, Jim Michalski, Comptroller's Auditing Division, Wanda Booker, Dept. of Public Works, Rick Meyers, Dept. of Public Works and Craig Kammholz, Comptroller's Office

2. Approval of the minutes of the July 27, 2009 meeting

Ald. Dudzik moved approval of the minutes, Ms. Schaal seconded. There were no objections.

3. Presentation given by Mr. Donald F. Pirrung, P.E., Consultant for Earth Tech/AECOM relating to a Recycling Facility Study for the City of Milwaukee

Mr. Donald F. Pirrung, PE and Mr. Paul Matz with Earth Tech/AECOM appeared to give the presentation.

Mr. Pirrung handed out a copy of his presentation. (Exhibit 1)

Ald. Dudzik moved and seconded by Ms. Schaal that the RECYCLING TASK FORCE convene into closed session, pursuant to s. 19.85(1)(e), Wis. Stats., for the purpose of formulating competitive bargaining strategies relating to recycling facility contracts in respect to item #3...Presentation given by Mr. Donald F. Pirrung, P.E., Consultant for Earth Tech/AECOM relating to a Recycling Facility Study for the City of Milwaukee.

Roll call taken at 1:44 P.M.:

Present: 4 - Erick Shambarger, Lisa Schaal, Ald. Dudzik and Preston Cole

Excused: 1 - Michael Daun

Mr. Shambarger moved and seconded by Ms. Schaal that the committee reconvene in open session.

Roll call taken at 2:44 P.M.

Present: 4 - Erick Shambarger, Lisa Schaal, Ald. Dudzik and Preston Cole

Excused: 1 - Michael Daun

4. Set next meeting date, time and agenda

Mr. Cole recommended that the next Recycling Task Force meeting take place on October 26, 2009 at 1:30 P.M. There were no objections.

Mr. Cole suggested that the following item be discussed by the task force at its next meeting:

Discussion relating to the changes in the Department of Public Works, Operations Division 2010 proposed budget that may impact the City of Milwaukee's recycling operations

Meeting adjourned: 2:46 P.M.

Terry J. MacDonald
Staff Assistant



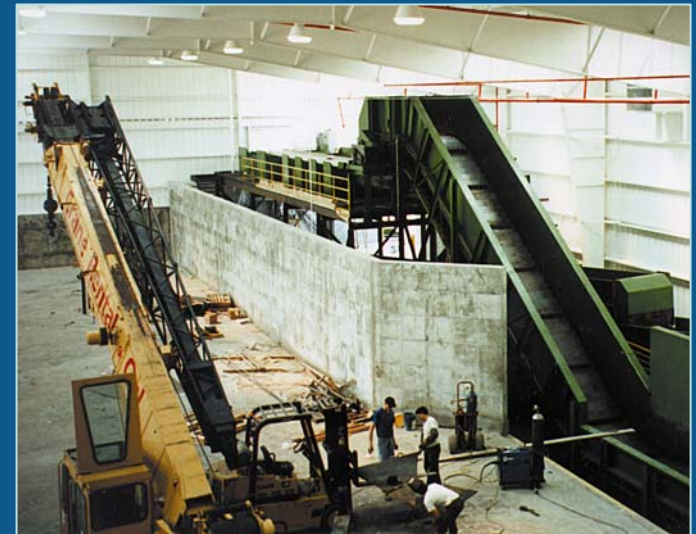
Recycling Facility Alternatives Study
City of Milwaukee
September 14, 2009

Prepared by:
Don Pirrung, PE
Paul Matz
AECOM

Exhibit 1

Project Background

- City owns recycling facilities
- Under contract with Recycle America (Waste Management)
- City shares in recycling revenue, 50:50 split
- Contract period
 - ❖ July 2004 through June 30, 2009
 - ❖ City has sole option to extend contract for up to five one-year periods



Existing and Proposed Regional Recycling Facilities

- City's facility: South 13th Street and Mount Vernon
- Waste Management (Recycle America)
 - ❖ New facility in Germantown
- Proposed facility in Wauwatosa
 - ❖ Would serve Waukesha County, City of Wauwatosa, and City of Milwaukee



Executive Summary

Processing Alternatives

- A. Dual stream at existing City facility
- B. Single stream at existing City facility (City only)
- C. Two transfer stations to third party
- D. One transfer station at existing facility
- E. Regional MRF at Wauwatosa
- F. Regional MRF at existing City facility



Collection Alternatives

- Monthly – current practice
- 3 weeks (1 person/truck)
- 3 weeks (2 persons/truck)
- 2 weeks (1 person/truck)
- 2 weeks (2 person/truck)



Evaluation Based on:

- Total present worth over 15 years
- State of practice
 - ❖ Dual stream
 - ❖ Single stream



Findings

– Processing

- ❖ First: Alternative D – one transfer station at existing facility
- ❖ Second: Alternative C – two transfer stations to third party

– Collection

- ❖ First: - 3 week – 1 person/truck
- ❖ Potential in future for 2 week – 1 person/truck as City fine tunes the program



Recommendations

1. Implement single stream processing
2. Implement Alternative D – one transfer station at existing facility
3. Potential to implement Alternative C – two transfer stations to third party in future if recycling compaction is done during second shift, thereby avoiding capital costs
4. Consider “pay as you throw” to improve recycling and reduce solid waste
5. Implement collection 3 week 1 person/truck, fine tune thereafter



Alternative A – Dual Stream at Existing City Facility

- Continue same processing
- Replaces old equipment
- Serve only the City
- Industry trend is single stream because collection is more cost-effective, increased recyclables, more user friendly
- Not most cost-effective



Alternative B – Single Stream at Existing City Facility (City only)

- Single stream processing
- Industry trend is toward single stream
- Not most cost-effective



Alternative C – Two Transfer Stations to Third Party

- Lincoln Avenue site
- New northwest site
- Two new transfer stations – higher capital cost than Alternative D
- Need room to park recycling trucks
- Potential solution in future if recyclables compacted during second shift to reduce capital cost and use solid waste transfer station
- Second lowest cost alternative



Alternative D – One Transfer Station at Existing Facility

- Lowest cost alternative
- Converts City MRF into transfer station
- Smallest City investment, lowest risk
- Single stream processing at third party



Alternative E – Regional MRF at Wauwatosa

- Regional MRF for Waukesha County, City of Wauwatosa and City of Milwaukee
- Highest cost alternative
- Recent MRF construction projects indicate higher costs than Waukesha County study
- More costs, more risks
- More challenges to implement with more government bodies involved



Alternative F – Regional MRF at Existing City Facility

- Regional MRF for Waukesha County, City of Wauwatosa, and City of Milwaukee
- Third most cost-effective alternative
- More costs, more risks than transfer station alternatives
- More challenges to implement with more government bodies involved



Collection Alternatives



- Monthly – 1 person/truck
 - ❖ Continues existing program
 - ❖ City survey and literature indicates more frequent collection is desirable
- 3 weeks – 1 person/truck
 - ❖ Most cost effective and efficient if cart is at curb or alley on a set pick up schedule
 - ❖ No more up the driveway service
 - ❖ 10% increase in recyclables expected over monthly
 - ❖ Requires public information
 - ❖ View as next step in continuing improvement process

Collection Alternatives

- 3 weeks – 2 persons/truck
 - ❖ Not cost-effective
 - ❖ Increased labor cost is not offset by increased recyclables volume
 - ❖ 10% increase in recyclables over monthly
- 2 weeks – 1 person/truck
 - ❖ Not cost-effective yet, but may be in future as City fine tunes program
 - ❖ Best approach, user friendly
 - ❖ Increases recyclables by 20 percent over monthly
- 2 weeks – 2 persons/truck
 - ❖ Increased labor cost is not offset by increased recyclables volume



Total Present Worth Analysis Summary

- Capital cost: processing, structures
- Operation & maintenance cost: processing
- Recycling revenue
- Transportation cost: trucks and labor
- Avoided cost (revenue) for recyclables formerly sent to landfill



Alternatives and Total Present Worth

| | |
|---|---------------|
| A. Dual stream at existing City facility | \$-5,559,000 |
| B. Single stream at existing City facility (City only) | \$-9,536,000 |
| C. Two transfer stations to third party | \$-2,428,000 |
| D. One transfer station at existing facility | \$1,225,000 |
| E. Regional MRF at Wauwatosa | \$-10,985,000 |
| F. Regional MRF at existing City facility | \$-6,242,000 |
| ❖ Based on low volume, low recycling price | |
| ❖ Negative is a cost, a plus is a revenue | |
| ❖ Alternative D is always profitable (4 cases) | |

Cost Analysis

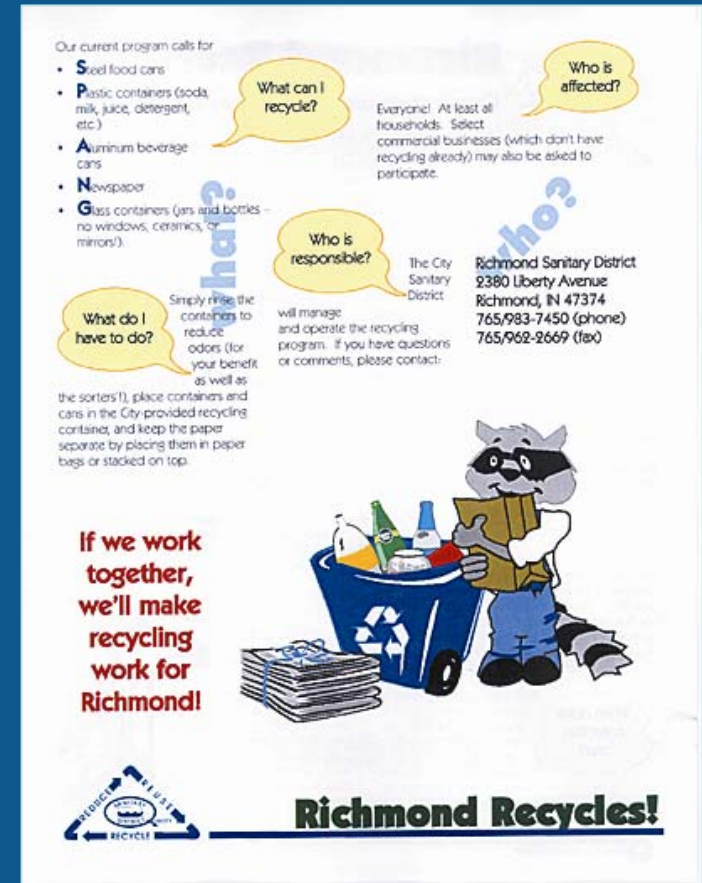
- Bracketed recycling material price and recycling volume
- 4 scenarios
- Low volume, low recycling material price
- Low volume, high recycling material price
- High volume, low recycling material price
- High volume, high recycling material price

Results: most cost-effective alternative was consistent throughout



Other Recycling Considerations

- Public education
- Recycling collection frequency
- Pay as you throw program
 - ❖ 16 to 17% diversion from trash among recycling, yard waste and source reduction



Richmond, IN sample public informational flyer

Summary

- Recycling program is a continuing improvement process
- Collection will evolve from monthly to 3 weeks to possibly 2 weeks in future
- Processing becomes more efficient over time
- Recycling markets are global and improved markets are expected
- Contract negotiations are key to success
- Single transfer station is cost effective. Potential for two transfer stations, with innovative operations

