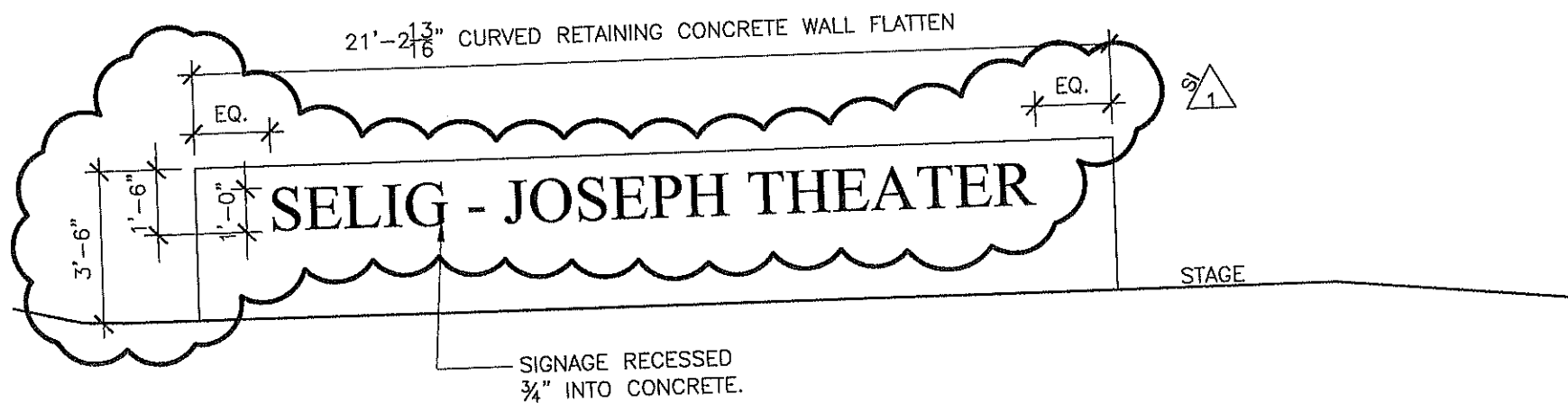


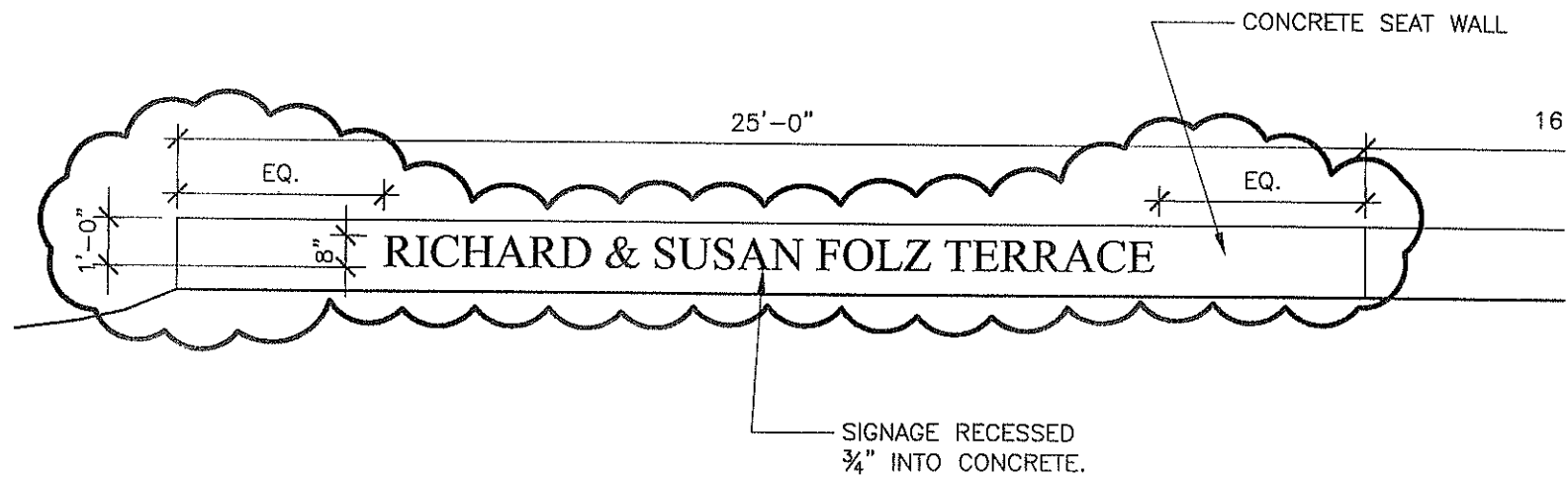
1

 $1/4' = 1'-0''$ 

ELEVATION OF CONCRETE RETAINING WALL

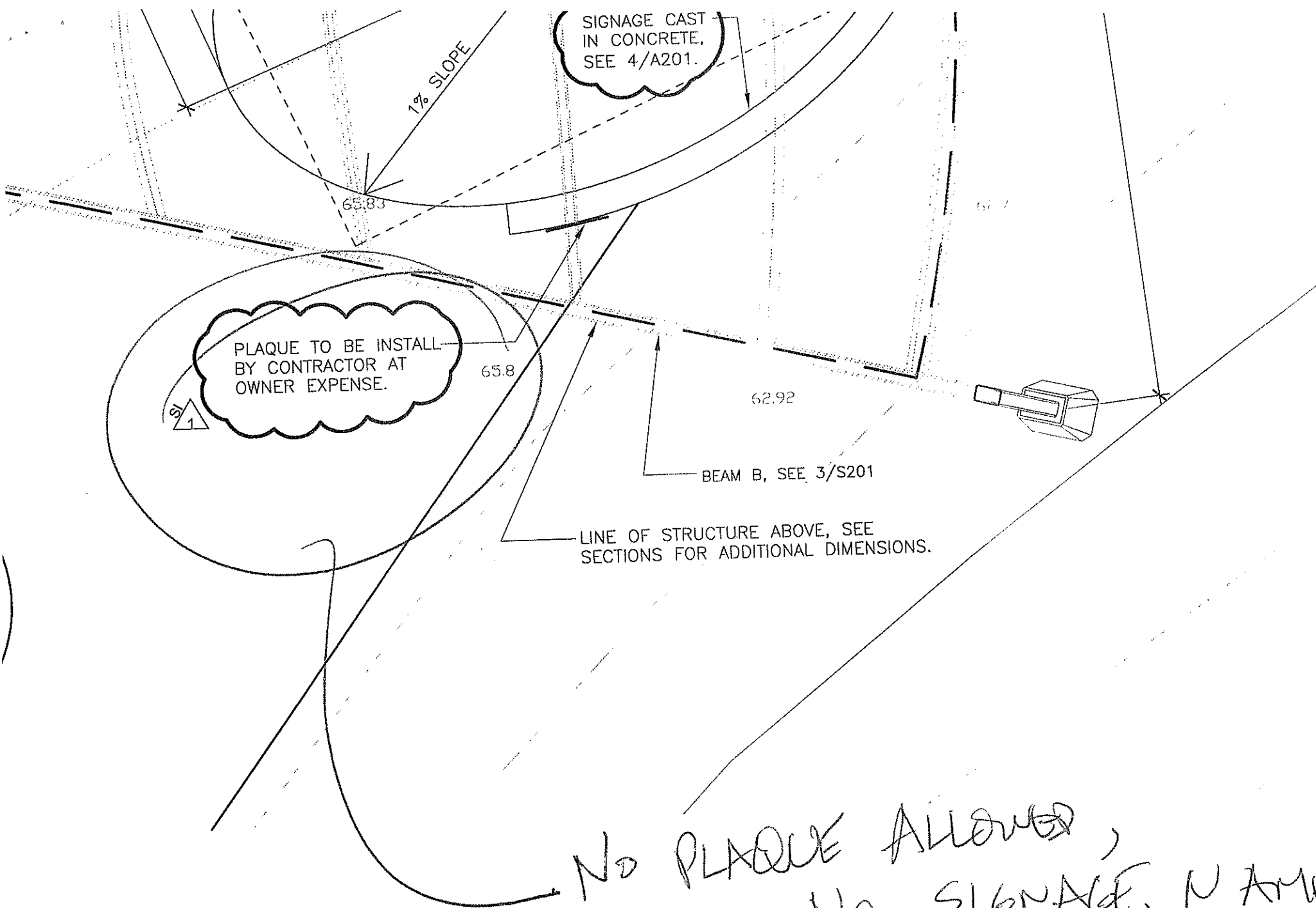
4

 $1/4' = 1'-0''$



5 ELEVATION OF CONCRETE SEATWALL

1/4' = 1'-0"



$\frac{1}{5}$

83.4

5% SLOPE

~~NEW SEATWALL~~

NEW SEATWALL

NEW SEATWALL

-SOUND
PULL

4

6

2